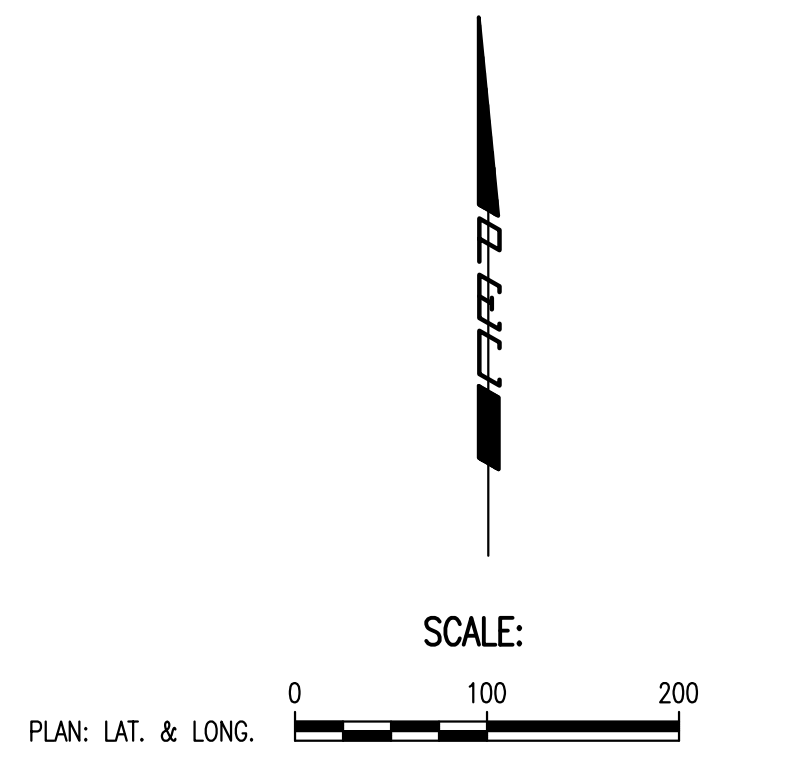
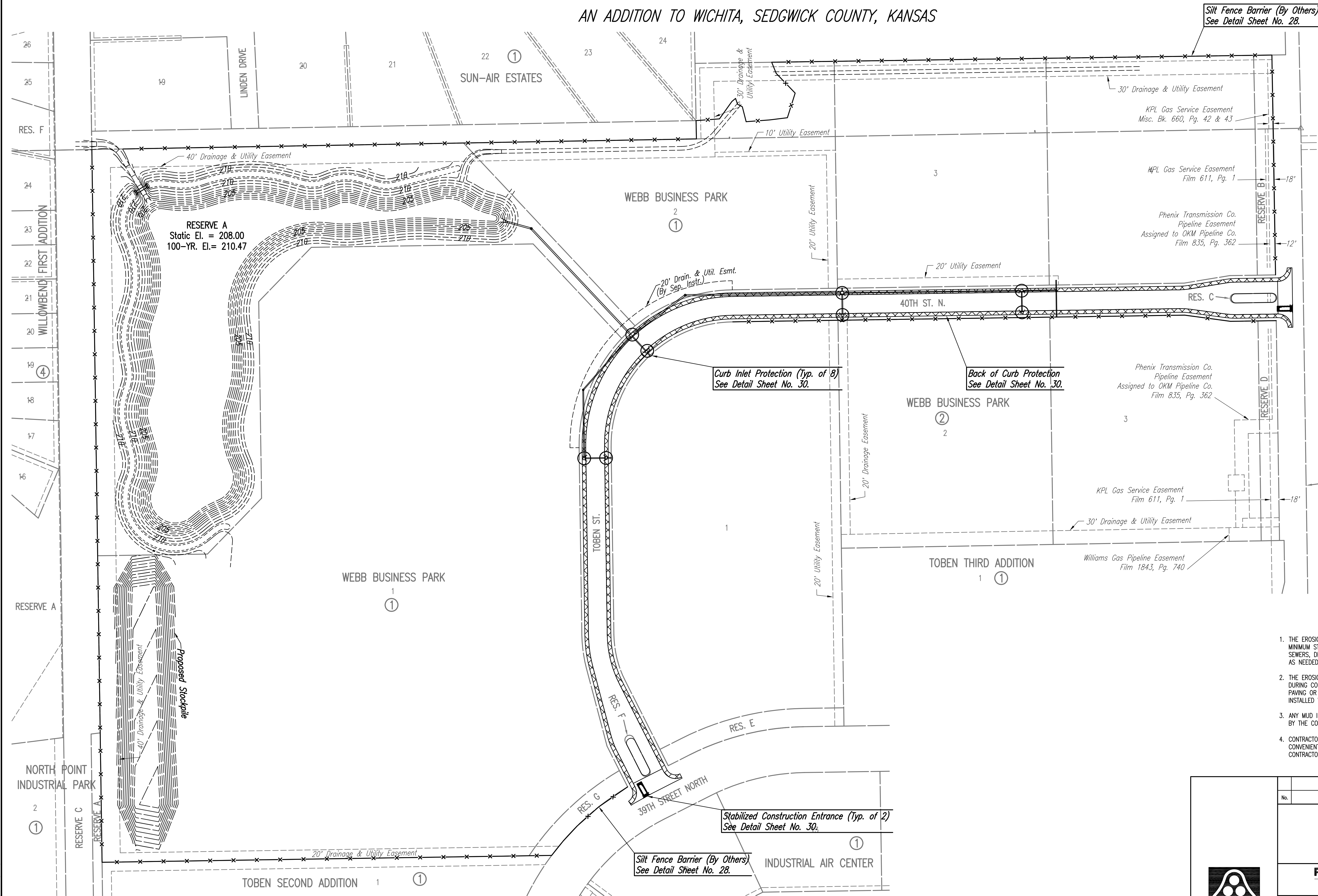


# WEBB BUSINESS PARK

AN ADDITION TO WICHITA, SEDGWICK COUNTY, KANSAS



**LEGEND**

- Silt Fence Barrier
- Curb Inlet Protection
- Area Inlet Protection
- Back of Curb Protection

**GENERAL NOTES**

1. THE EROSION CONTROL DEVICES SHOWN ON THIS SHEET ARE CONSIDERED MINIMUM STANDARDS. WHENEVER SEDIMENT ENTERS THE STREETS, STORM SEWERS, DITCHES, OR PONDS, CONTRACTOR WILL INSTALL ADDITIONAL DEVICES, AS NEEDED, TO CORRECT THE PROBLEM.
2. THE EROSION CONTROL DEVICES SHOWN HEREON MUST BE IN PLACE AT ALL TIMES DURING CONSTRUCTION UNTIL SUCH TIME AS THE SITE IS REESTABLISHED WITH PAVING OR GRASS. TEMPORARY OR PERMANENT AND MULCH WILL BE INSTALLED WHEN EARTHWORK ACTIVITIES CEASE IN AN AREA FOR 14 DAYS OR MORE.
3. ANY MUD INADVERTENTLY TRACKED ONTO ANY STREET WILL BE CLEANED UP BY THE CONTRACTOR, AT THE END OF EACH DAY'S WORK.
4. CONTRACTOR TO FURNISH A TRUCK WASH-OUT PIT TO BE PLACED AT A CONVENIENT LOCATION THAT DOES NOT CONFLICT WITH CONSTRUCTION. CONTRACTOR SHALL CLEAN OUT AND BACKFILL PIT PRIOR TO FINAL INSPECTION.

Served 04-14-2008 8:36:38 AM by BJS  
 Plot Scale 1:100 04-14-2008 8:37:03 AM  
 Q:\2007\07593\000\07593-000-C-EROSION CONTROL PLAN

No.	Revision	By	Date
WEBB BUSINESS PARK PAVING AND INCIDENTAL DRAINAGE IMPROVEMENTS <b>EROSION CONTROL PLAN</b> JAMES L. ARMOUR, P.E. - CITY ENGINEER CITY OF WICHITA PROJECT NO. 472-84611 <b>Professional Engineering Consultants, P.A.</b> 303 S. TOPEKA • WICHITA, KANSAS 67202 316-262-2691 • FAX 316-262-3003			
Designed by	BMM	Job No.	35-07593-000
Drawn by	BJS, TAT	Date	June 2007
			Sheet 26 of 46