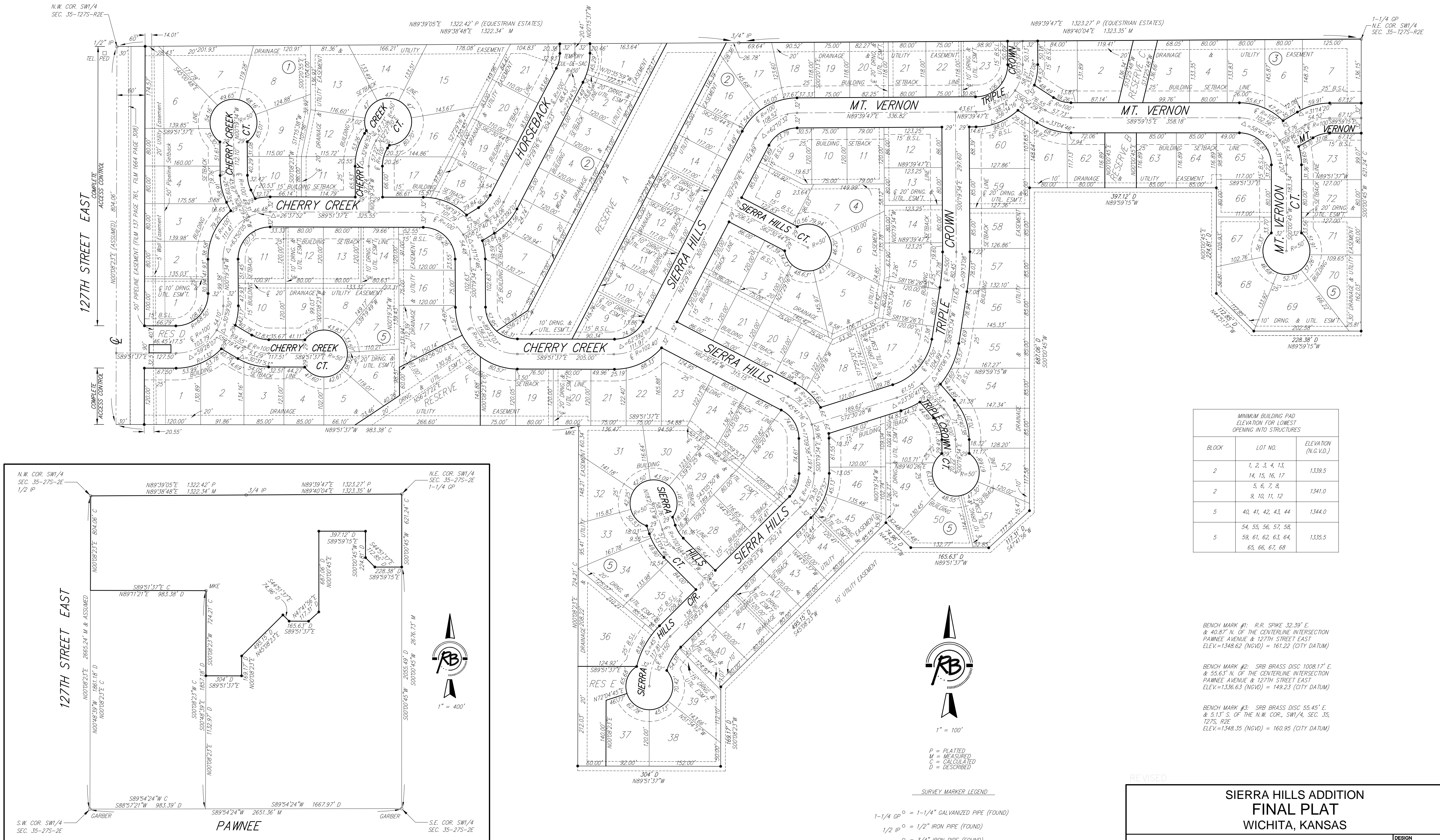


SIERRA HILLS

An Addition to Wichita, Sedgwick County, Kansas



BENCH MARK #1: R.R. SPIKE 32.39' E. & 40.87' N. OF THE CENTERLINE INTERSECTION PAWNEE AVENUE & 127TH STREET EAST
ELEV.=1348.62 (NGVD) = 161.22 (CITY DATUM)

BENCH MARK #2: SRB BRASS DISC 1008.17' E. & 55.63' N. OF THE CENTERLINE INTERSECTION PAWNEE AVENUE & 127TH STREET EAST
ELEV.=1336.63 (NGVD) = 149.23 (CITY DATUM)

BENCH MARK #3: SRB BRASS DISC 55.45' E. & 5.13' S. OF THE N.W. COR., SW1/4, SEC. 35, T27S, R2E
ELEV.=1348.35 (NGVD) = 160.95 (CITY DATUM)

REVISED

**SIERRA HILLS ADDITION
FINAL PLAT
WICHITA, KANSAS**

Ruggles & Bohm, P.A.
Engineering, Surveying, Land Planning

924 North Main
Wichita, Kansas 67203
www.rbkansas.com

(316) 264-8008
(316) 264-4621 fax
E-mail: info@rbkansas.com

DESIGN	RJ/MS	SHEET 24 OF 24	
DRAWN	RC		
REVIEW	UTILITY	DATE	
DRAWING FILE	PAVING {FINAL PLAT}	PROJECT NUMBER	472-84690
			Apr. 16, 2008