

BENCHMARK:

BM #1: CITY OF WICHITA BENCHMARK DISC, TOP OF CURB AT WEST END OF CURB RETURN, NORTHWEST CORNER OF INTERSECTION OF CITY VIEW AND SHERIAC CIR. IN SHADOW WOODS ADDITION.
ELEV. = 1386.66 NGVD29

BM #2: CITY OF WICHITA BENCHMARK DISC, TOP OF CURB BY FIRE HYDRANT AT WEST END OF CURB RETURN, NORTHWEST CORNER OF INTERSECTION OF SHERIAC CIR. AND SHERIAC CT., SOUTH OF SE CORNER OF LOT 13, BLOCK B, SHADOW WOODS ADDITION.
ELEV. = 1392.11 NGVD29

CAUTION!
Existing 6" Aquila gas line crossing. Contact Calvin Briggs at 941-1608 at least 72 hours prior to construction.

WL Sta -0+03.30, Begin Line 1 = BL Sta 0+18.08, 21.6' Rt. 1 - 24"x8" PVC Tapping Saddle 1 - 8" Tapping Valve 1 - 6" Valve Box Valve Box Elev. = To be furnished and installed by the City of Wichita Water Department.

CAUTION!
Ex. Gas Crossing

CAUTION!
Ex. Gas Crossing

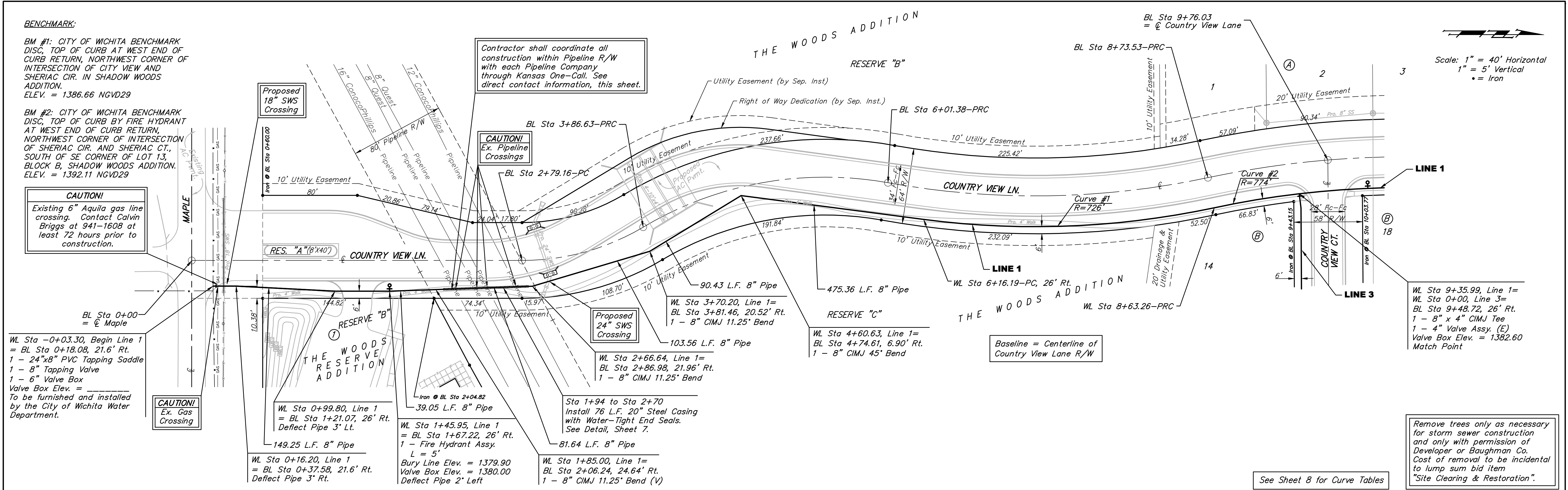
Contractor shall coordinate all construction within Pipeline R/W with each Pipeline Company through Kansas One-Call. See direct contact information, this sheet.

CAUTION!
Ex. Pipeline Crossings

CAUTION!
Ex. Pipeline Crossings

Sta 1+94 to Sta 2+70 Install 76 L.F. 20" Steel Casing with Water-Tight End Seals. See Detail, Sheet 7.

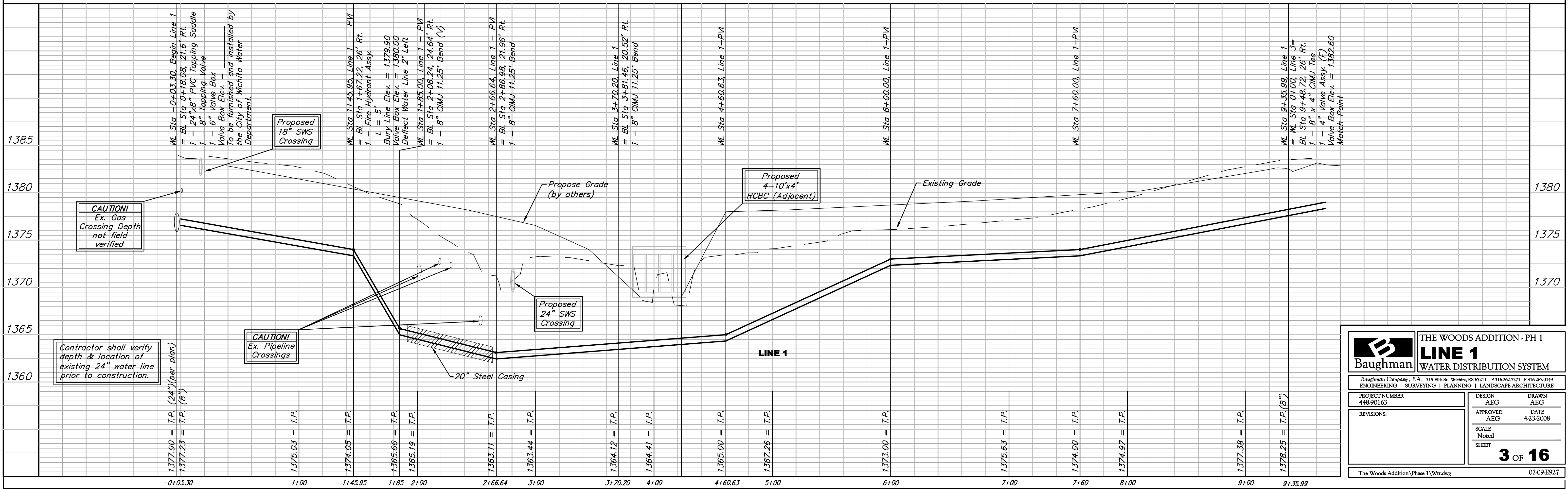
Scale: 1" = 40' Horizontal
1" = 5' Vertical
• = Iron



WL Sta 9+35.99, Line 1 = WL Sta 0+00, Line 3 = BL Sta 9+48.72, 26' Rt. 1 - 8" x 4" CIMJ Tee 1 - 4" Valve Assy. (E) Valve Box Elev. = 1382.60 Match Point

Remove trees only as necessary for storm sewer construction and only with permission of Developer or Baughman Co. Cost of removal to be incidental to lump sum bid item "Site Clearing & Restoration".

See Sheet 8 for Curve Tables



Baughman		THE WOODS ADDITION - PH 1	
ENGINEERING SURVEYING PLANNING LANDSCAPE ARCHITECTURE		LINE 1 WATER DISTRIBUTION SYSTEM	
PROJECT NUMBER 448-90163	DESIGN AEG	DRAWN AEG	DATE 4-23-2008
REVISIONS:	APPROVED AEG	SCALE Noted	SHEET 3 OF 16
The Woods Addition/Phase 1/Wtr.dwg			07-09-E927