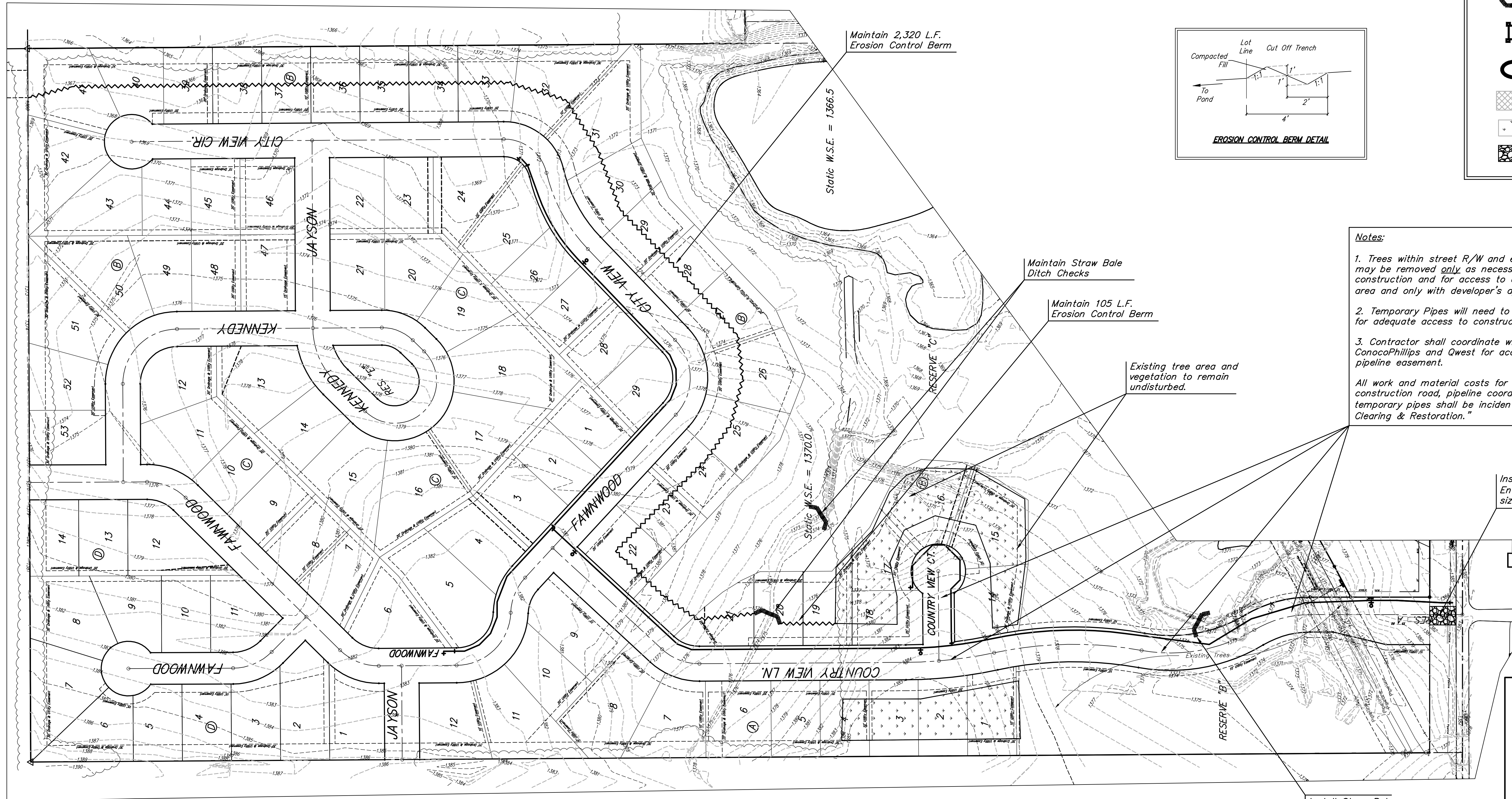
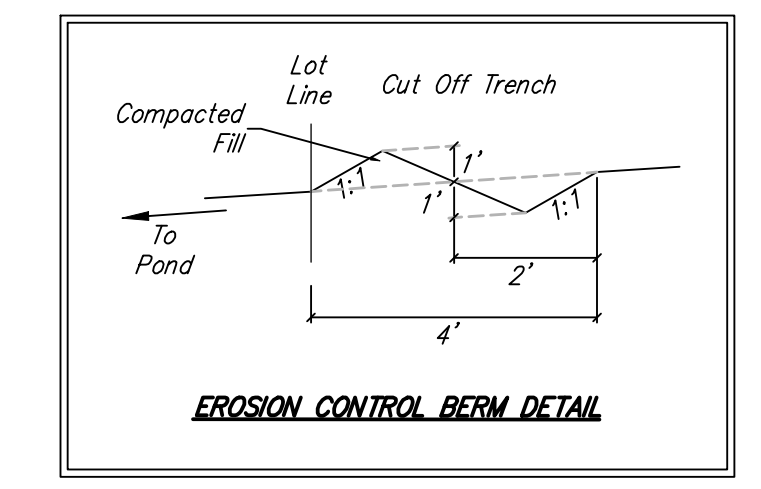


EROSION CONTROL MEASURE	UNITS	QUANTITY
Install Construction Entrance	Ea.	1
Maintain Straw Bale Ditch Check	Ea.	3
Maintain Erosion Control Berm	L.F.	2425

Quantities are For Information Only! Contractor shall verify quantities per final bid quantity sheet.

--- 185 --- Existing Grade
 — 185 — Proposed Grade
 X X X X Silt Fence
 ~~~~~ Cut-Off Trench  
 U Ditch Checks  
 H Drop Inlet Protection  
 O Curb Inlet Protection  
 [Cross-hatched] Curlex Erosion Mat  
 [Dotted] Undisturbed Veg. Area  
 [Grid] Construction Entrance



**Notes:**

- Trees within street R/W and easements may be removed only as necessary for construction and for access to construction area and only with developer's approval.
- Temporary Pipes will need to be installed for adequate access to construction area.
- Contractor shall coordinate with ConocoPhillips and Qwest for access across pipeline easement.

All work and material costs for tree removal, construction road, pipeline coordination, and temporary pipes shall be incidental to "Site Clearing & Restoration."

Maintain Straw Bale Ditch Checks

Maintain 105 L.F. Erosion Control Berm

Existing tree area and vegetation to remain undisturbed.

Install Construction Entrance with 15" min. size temp. entrance pipe

Install Straw Bale Ditch Check

|                                                               |                                                                                                                                                                              |                         |
|---------------------------------------------------------------|------------------------------------------------------------------------------------------------------------------------------------------------------------------------------|-------------------------|
|                                                               | <b>The Woods Addition</b><br><b>Erosion Control Plan</b><br>Water Distribution System                                                                                        |                         |
|                                                               | <small>Baughman Company, P.A. 315 Ellis St. Wichita, KS 67211 P 316-262-7271 F 316-262-0149<br/>         ENGINEERING   SURVEYING   PLANNING   LANDSCAPE ARCHITECTURE</small> |                         |
| PROJECT NUMBER<br><b>448-90163</b>                            | DESIGN<br>AEG                                                                                                                                                                | DRAWN<br>AEG            |
| REVISIONS:                                                    | APPROVED<br>AEG                                                                                                                                                              | DATE<br>4-23-2008       |
|                                                               | SCALE<br>Noted                                                                                                                                                               | SHEET<br><b>9 OF 16</b> |
| <small>The Woods Addition\Phase 1\WTR\WTR_EC_Plan.dwg</small> |                                                                                                                                                                              |                         |