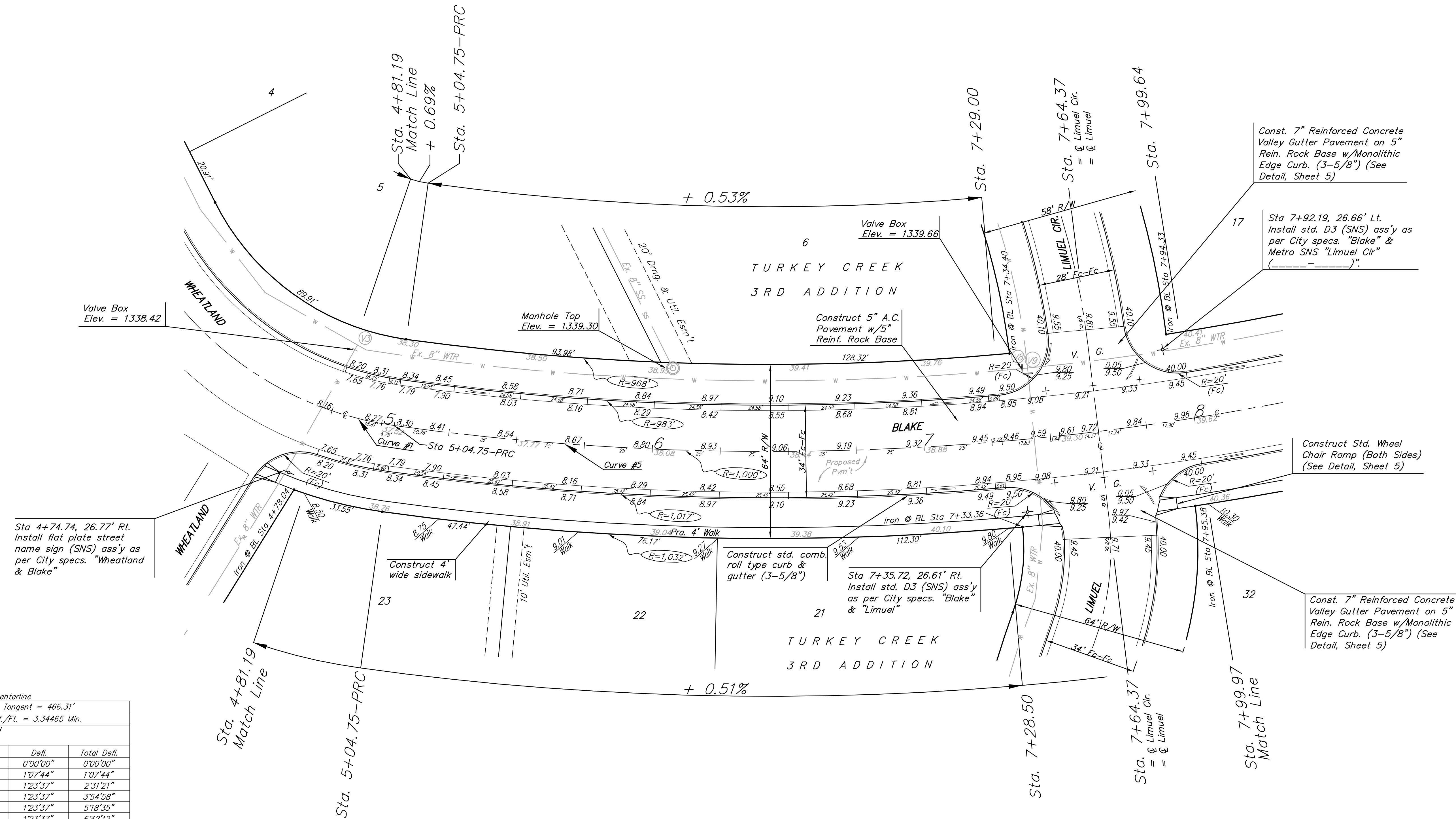
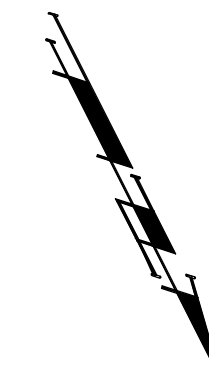


BENCHMARKS:

135th St. W. & Pawnee—
City of Wichita Benchmark
Disc on SW Corner of
Concrete Base of High Line
Pole.
Elev. = 1359.65 NGVD29

119th St. W. & Pawnee—
City of Wichita Benchmark
Disc 0.5 miles S of Kellogg.
42.2' E of centerline & 6.4'
S of Power Pole.
Elev. = 1332.09 MSL

Scale: 1" = 20'
• = Iron



Sta 4+74.74, 26.77' Rt.
Install flat plate street
name sign (SNS) ass'y as
per City specs. "Wheatland
& Blake"

Const. 7" Reinforced Concrete
Valley Gutter Pavement on 5"
Rein. Rock Base w/Monolithic
Edge Curb. (3-5/8") (See
Detail, Sheet 5)

Sta 7+92.19, 26.66' Lt.
Install std. D3 (SNS) ass'y as
per City specs. "Blake" &
Metro SNS "Limuel Cir"
(-----):

Construct Std. Wheel
Chair Ramp (Both Sides)
(See Detail, Sheet 5)

Const. 7" Reinforced Concrete
Valley Gutter Pavement on 5"
Rein. Rock Base w/Monolithic
Edge Curb. (3-5/8") (See
Detail, Sheet 5)

Curve #5

Curve Data Based on Centerline

Rad. = 1000' Delta = 50°00'01" Tangent = 466.31'
Arc = 448.48' L.C. = 845.24' Def./Ft. = 3.34465 Min.

Face Chord

Lengths

Station	Arc	6' Left	Defl.	Total Defl.
5+04.75	-	-	0'00'00"	0'00'00"
5+25.00	20.25'	39.16'	1'07'44"	1'07'44"
5+50.00	25.00'	48.35'	1'23'37"	2'31'21"
5+75.00	25.00'	48.35'	1'23'37"	3'54'58"
6+00.00	25.00'	48.35'	1'23'37"	5'18'35"
6+25.00	25.00'	48.35'	1'23'37"	6'42'12"
6+50.00	25.00'	48.35'	1'23'37"	8'05'49"
6+75.00	25.00'	48.35'	1'23'37"	9'29'26"
7+00.00	25.00'	48.35'	1'23'37"	10'53'03"
7+25.00	25.00'	48.35'	1'23'37"	12'16'40"
7+28.50	3.50'	6.77'	0'11'42"	12'28'22"
7+29.00	0.50'	0.97'	0'01'40"	12'30'02"
7+50.00	21.00'	40.61'	1'10'15"	13'40'17"
7+64.37	14.37'	27.79'	0'48'03"	14'28'20"
7+75.00	10.63'	20.56'	0'35'33"	15'03'53"
7+99.64	24.64'	47.65'	1'22'25"	16'26'18"
7+99.97	0.33'	0.64'	0'01'06"	16'27'24"
8+00.00	0.03'	0.06'	0'00'06"	16'27'30"
8+25.00	25.00'	48.35'	1'23'37"	17'51'07"
8+50.00	25.00'	48.35'	1'23'37"	19'14'44"
8+75.00	25.00'	48.35'	1'23'37"	20'38'21"
9+00.00	25.00'	48.35'	1'23'37"	22'01'58"
9+25.00	25.00'	48.35'	1'23'37"	23'25'35"
9+50.00	25.00'	48.35'	1'23'37"	24'49'12"

Curve #1

Curve Data Based on Centerline

Rad. = 125' Delta = 55°23'30" Tangent = 65.61'
Arc = 120.84' L.C. = 116.19' Def./Ft. = 13.75166 Min.

Face Chord

Lengths

Station	Arc	6' Left	Defl.	Total Defl.
3+83.91	-	-	0'00'00"	0'00'00"
4+00.00	16.09'	15.31'	3'41'16"	3'41'16"
4+23.58	23.58'	22.42'	5'24'16"	9'05'32"
4+25.00	1.42'	1.35'	0'19'31"	9'25'03"
4+50.00	25.00'	23.76'	5'43'48"	15'08'51"
4+52.38	2.38'	2.27'	0'32'44"	15'41'35"
4+75.00	22.62'	21.51'	5'11'03"	20'52'38"
4+81.19	6.19'	5.89'	1'25'08"	22'17'46"
5+00.00	18.81'	17.89'	4'18'40"	26'36'26"
5+04.75	4.75'	4.52'	1'05'19"	27'41'45"

WATER VALVE LOCATION TABLE

VALVE NUMBER	BASELINE STATION	OFFSET DISTANCE	OFFSET DIRECTION
V8	7+38.62	26.00'	Lt.
V9	7+40.67	24.00'	Lt.

Paving contractor will be responsible to operate all water valves on the project, in the presence of the inspector, to ensure accessibility to the valves, and that all valves are left in the "ON" position when the project is completed.

NOTE: ROLL TYPE CURB & GUTTER TO BE CONSTRUCTED ON THE PAVEMENT SHOWN ON THIS SHEET. TOP OF CURB ELEVATIONS ARE GIVEN FOR FULL HEIGHT CURB.

Baughman Turkey Creek 3rd Addition - Phase I
Blake
Sta. 4+81.19 to 7+99.97

Baughman Company, P.A. 315 Ella St. Wichita, KS 67211 F 316-262-7271 F 316-262-0149
ENGINEERING | SURVEYING | PLANNING | LANDSCAPE ARCHITECTURE

PROJECT NUMBER 472-84486

DESIGN MWS DRAWN JRW
APPROVED MWS DATE 08/07

SCALE Noted
SHEET 10 OF 54