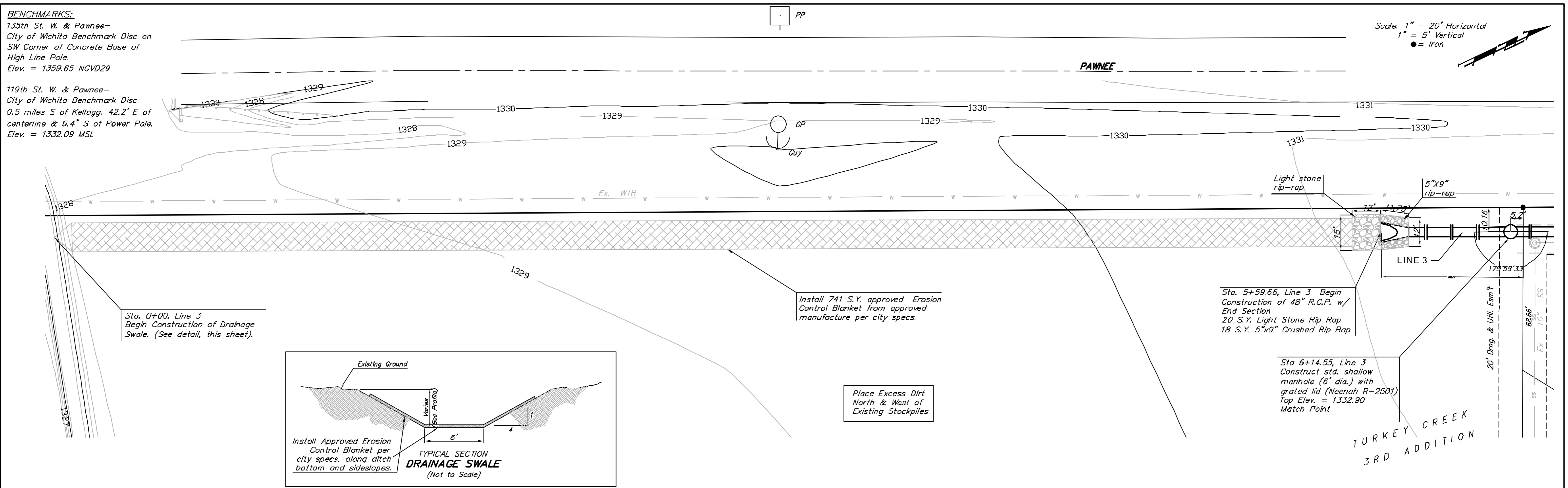
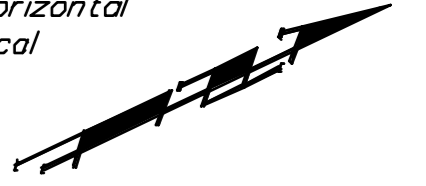


**BENCHMARKS:**

135th St. W. & Pawnee—  
City of Wichita Benchmark Disc on  
SW Corner of Concrete Base of  
High Line Pole.  
Elev. = 1359.65 NGVD29

119th St. W. & Pawnee—  
City of Wichita Benchmark Disc  
0.5 miles S of Kellogg, 42.2' E of  
centerline & 6.4' S of Power Pole.  
Elev. = 1332.09 MSL

Scale: 1" = 20' Horizontal  
1" = 5' Vertical  
● = Iron

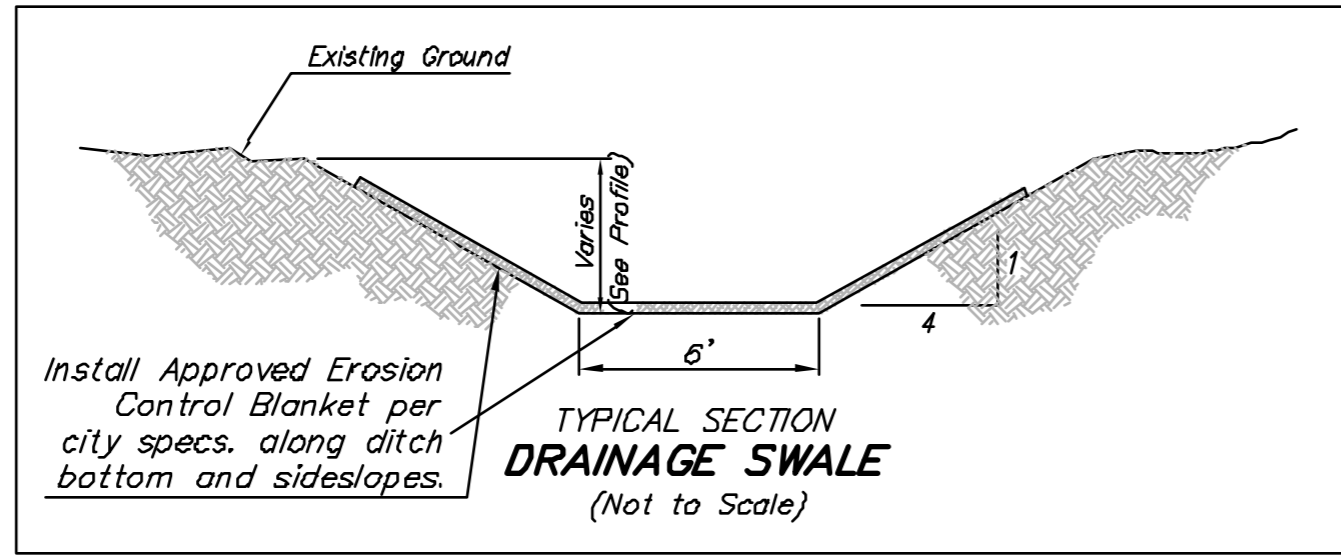


Sta. 0+00, Line 3  
Begin Construction of Drainage  
Swale. (See detail, this sheet).

Install 741 S.Y. approved Erosion  
Control Blanket from approved  
manufacture per city specs.

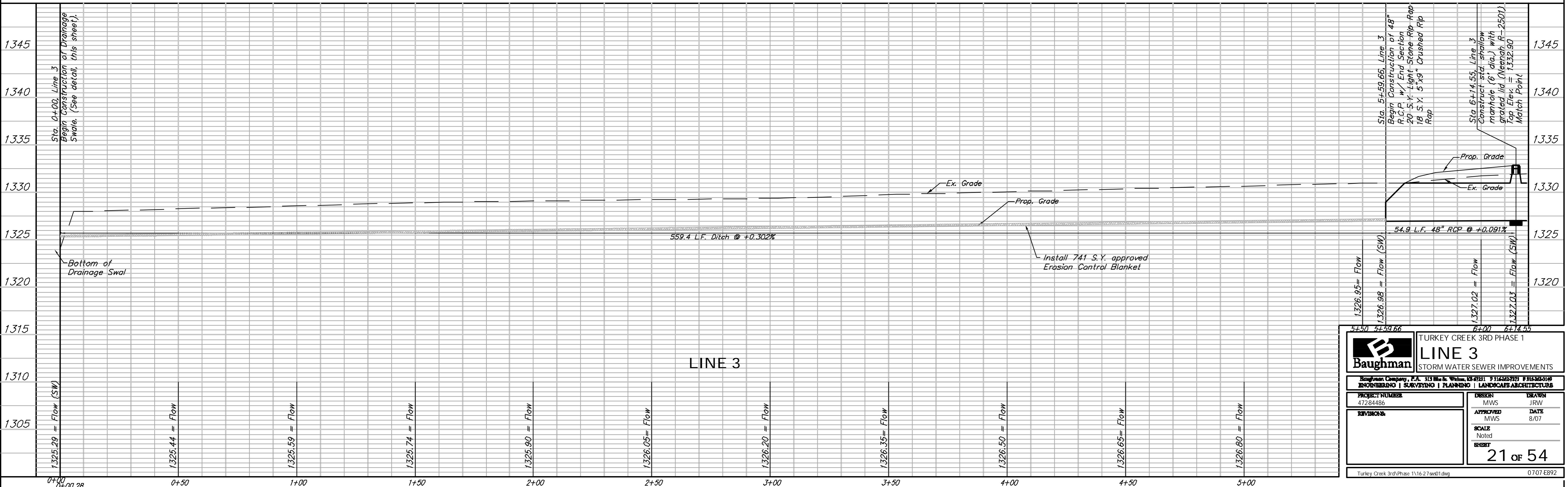
Sta. 5+59.66, Line 3 Begin  
Construction of 48" R.C.P. w/  
End Section  
20 S.Y. Light Stone Rip Rap  
18 S.Y. 5"x9" Crushed Rip Rap

Sta. 6+14.55, Line 3  
Construct std. shallow  
manhole (6' dia.) with  
grated lid (Neenah R-2501)  
Top Elev. = 1332.90  
Match Point



Place Excess Dirt  
North & West of  
Existing Stockpiles

TURKEY CREEK  
3RD ADDITION



		TURKEY CREEK 3RD PHASE 1	
		LINE 3	
STORM WATER SEWER IMPROVEMENTS		Baughman Company, P.A. 313 N. W. 10th St., Suite 100, Wichita, KS 67202 ENGINEERING   SURVEYING   PLANNING   LANDSCAPE ARCHITECTURE	
PROJECT NUMBER 47284486	DESIGN MWS	DRAWN JRW	DATE 8/07
APPROVED MWS	NOTED MWS	SCALE Noted	
SHEET 21 OF 54		Turkey Creek 3rdPhase 1\16-27\and1.dwg 0707.EB92	