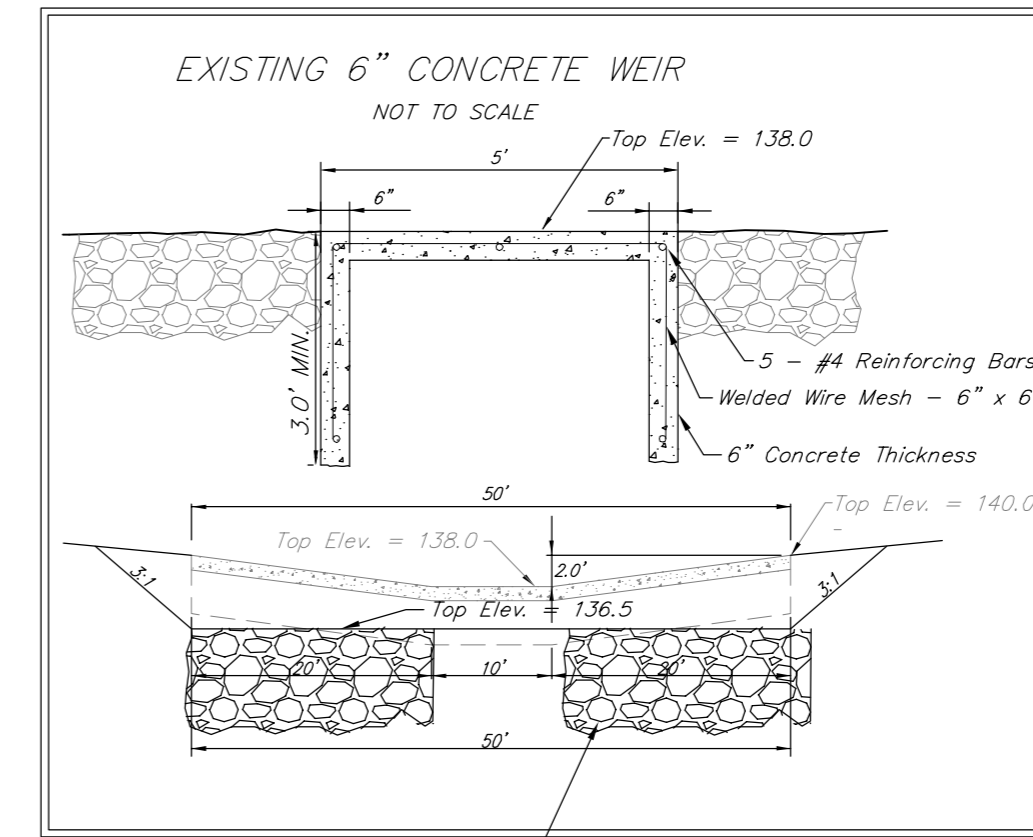
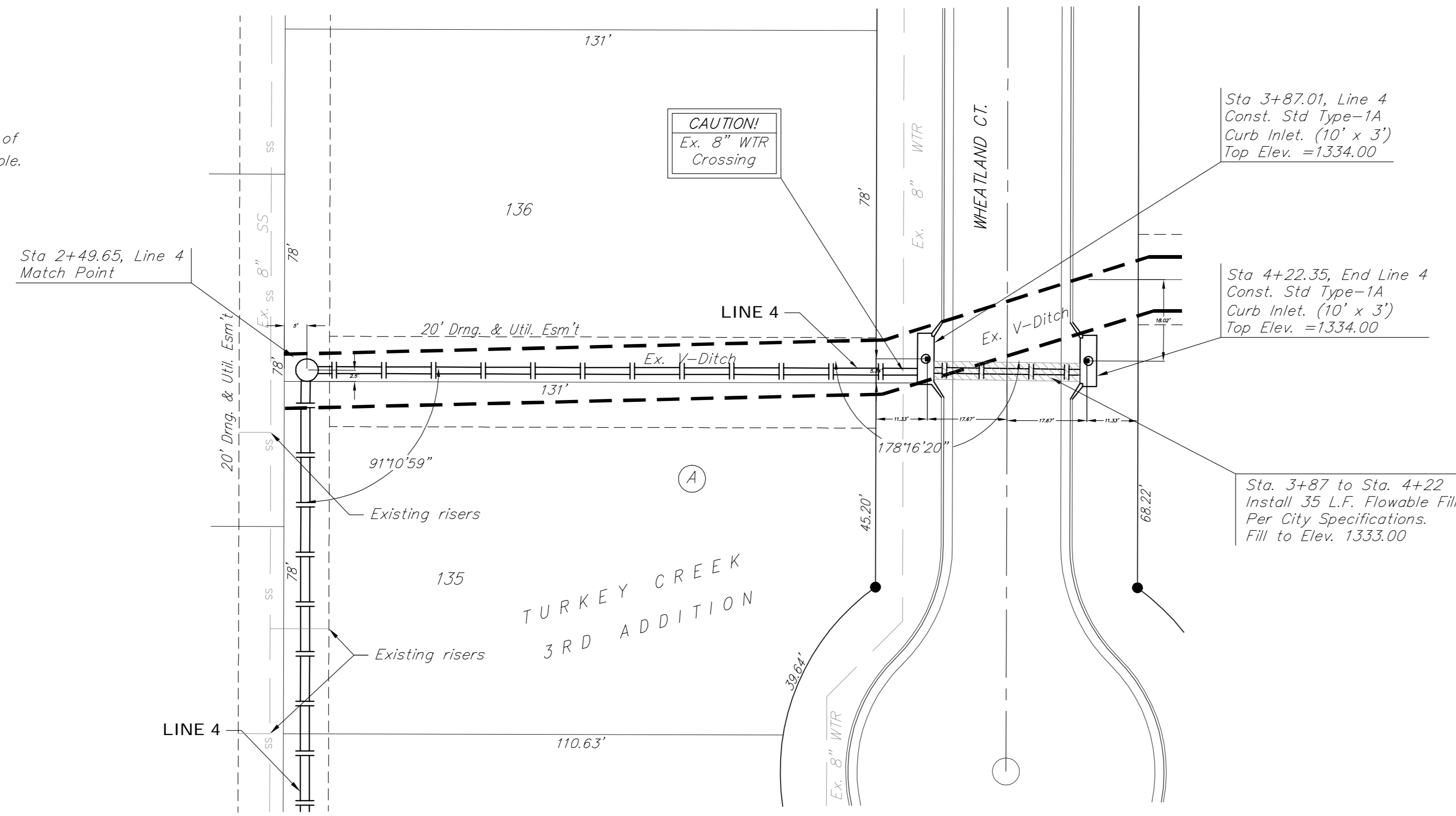


BENCHMARKS:
 135th St. W. & Pawnee—
 City of Wichita Benchmark Disc on
 SW Corner of Concrete Base of
 High Line Pole.
 Elev. = 1359.65 NGVD29

119th St. W. & Pawnee—
 City of Wichita Benchmark Disc
 0.5 miles S of Kellogg. 42.2' E of
 centerline & 6.4' S of Power Pole.
 Elev. = 1332.09 MSL

Scale: 1" = 20' Horizontal
 1" = 5' Vertical
 ● = Iron

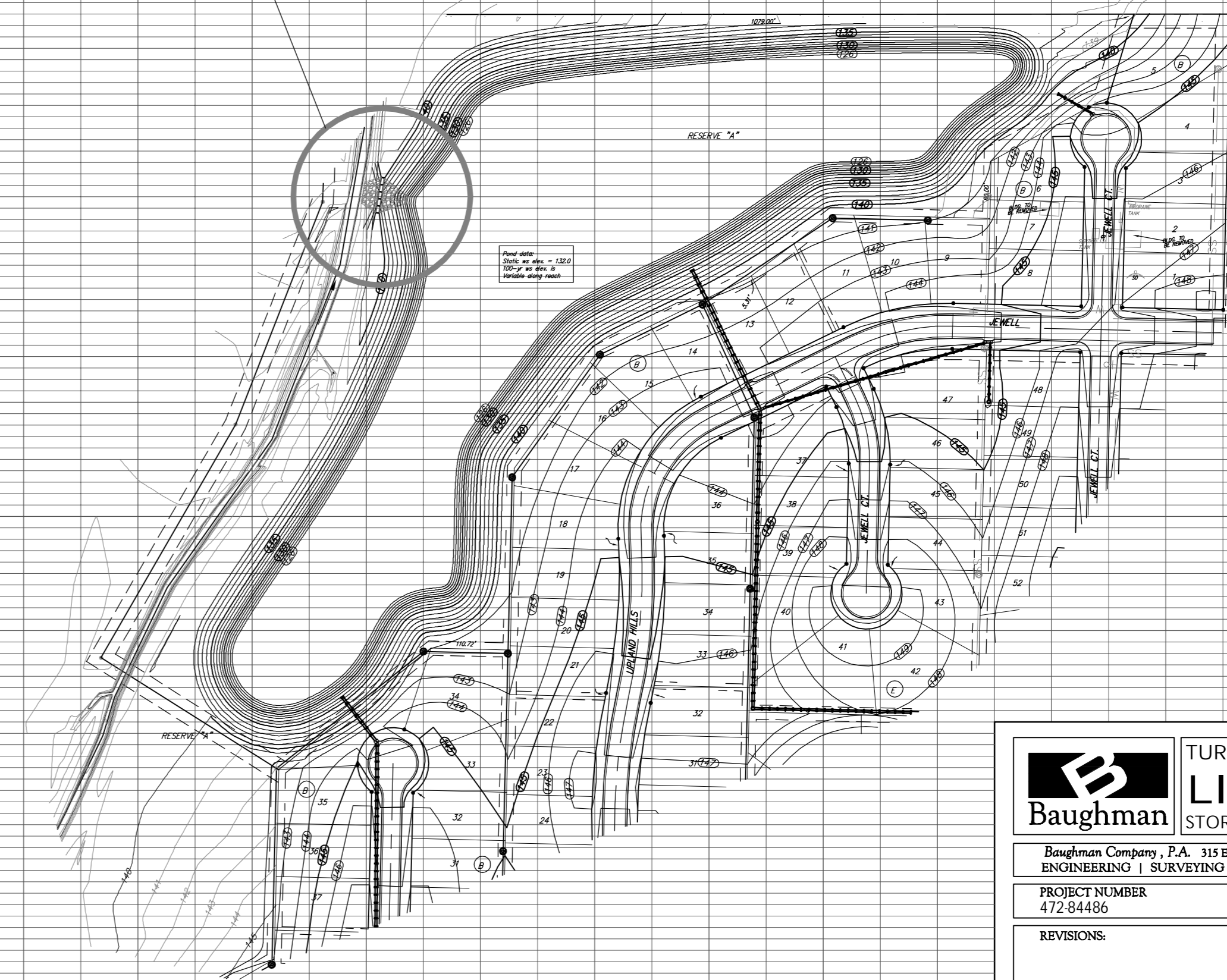
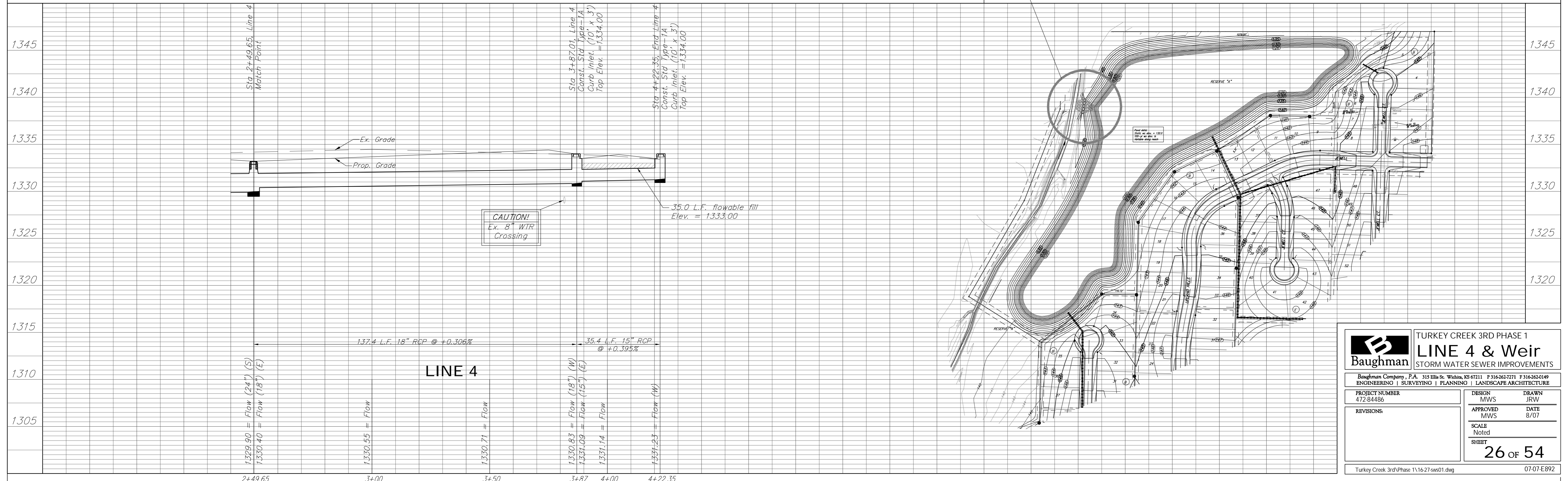


Turkey Creek Addition — Phase 1
 (Existing Pond). Contractor to
 remove existing Weir. Lower
 opening to 136.50. Install 35
 s.y. Heavy Stone Rip-Rap
 (Existing concrete from weir may
 be broken up and used as part
 of the Rip-Rap, small pieces to
 the bottom). Spread excess soil
 along top of berm neatly and
 seed. Cost of this work is
 incidental to "Site Clearing and
 Restoration".

Existing 120.0 s.y. of
 Heavy Stone Rip-rap.

Pond data:
 Static ws elev. = 132.0
 100-yr ws elev. is
 Variable along reach

Existing 98.0 s.y. of
 Heavy Stone Rip-rap.



		TURKEY CREEK 3RD PHASE 1 LINE 4 & Weir STORM WATER SEWER IMPROVEMENTS	
		<small>Baughman Company, P.A. 315 Ellis St. Wichita, KS 67211 F 316-262-7271 F 316-262-0149 ENGINEERING SURVEYING PLANNING LANDSCAPE ARCHITECTURE</small>	
PROJECT NUMBER 472-84486	DESIGN MWS	DRAWN JRW	DATE 8/07
REVISIONS:	APPROVED MWS	SCALE Noted	
		SHEET 26 OF 54	
<small>Turkey Creek 3rdPhase 1\16-27-sw01.dwg</small>			<small>07-07-E892</small>