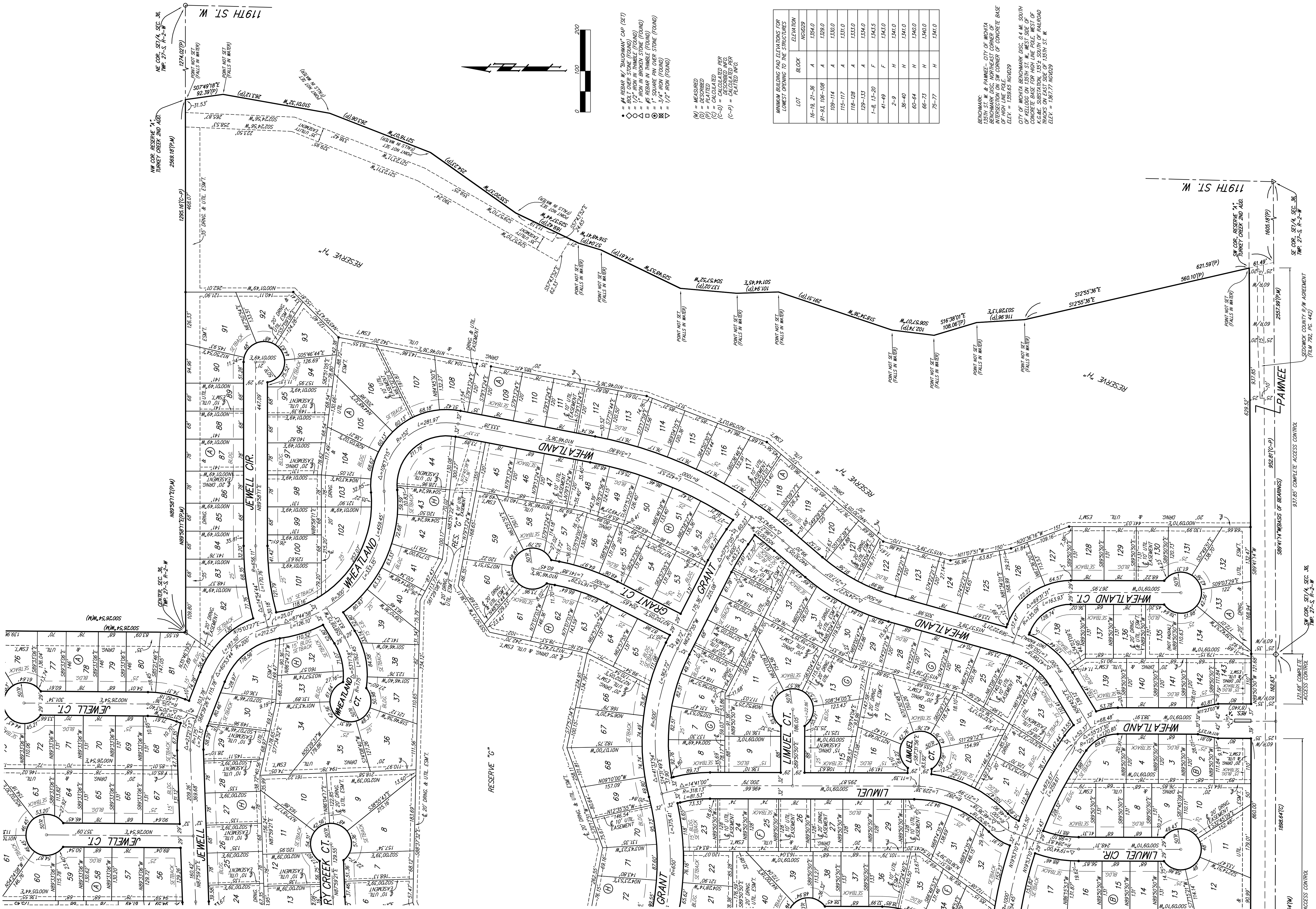


TURKEY CREEK 3RD ADDITION

WICHITA, SEDGWICK COUNTY, KANSAS



LOT	BLOCK	ELEVATION
16-19, 21-36	A	1354.0
91-93, 106-108	A	1329.0
109-114	A	1330.0
115-117	A	1331.0
118-128	A	1333.0
129-133	A	1334.0
1-8, 15-20	F	1343.0
41-49	F	1343.0
2-9	H	1341.0
36-40	H	1340.0
60-64	H	1340.0
66-73	H	1340.0
75-77	H	1341.0

MINIMUM BUILDING PAD ELEVATIONS FOR LOWEST OPENING TO THE STRUCTURES

(M) = MEASURED
 (D) = DESCRIBED
 (P) = PLATTED
 (C) = CALCULATED
 (C-D) = CALCULATED PER DISASSEMBLED WED
 (C-P) = CALCULATED PER PLATTED INCL.

BENCHMARK: A. PANNEY - CITY OF WICHITA
 BENCHMARK DISC. NORTHEAST CORNER OF INTERSECTION ON SW CORNER OF CONCRETE BASE OF HIGH LINE PALE.
 ELEV. = 1336.63 MGD29

CITY OF WICHITA BENCHMARK DISC. 0.4 MI. SOUTH OF KELLOGG ON 15TH ST. W. WEST SIDE OF CONCRETE BASE FOR HIGH LINE PALE. WEST OF TRACKS ON EAST SIDE OF 15TH ST. W.
 ELEV. = 1367.77 MGD29

NOTE: The grading plan for drainage has been developed for this subdivision and is on file with the City of Wichita, Kansas. All drainage comments, right-of-ways, or reserves shall remain at established grades or as modified with the approval of the City Engineer of the City of Wichita. The contractor shall be responsible for any adjustments which impede the flow of this drainage system. A final plat shall be allowed.