

TURKEY CREEK 3RD ADDITION

WICHITA, SEDGWICK COUNTY, KANSAS

BOARD OF COUNTY COMMISSIONERS
OF SEDGWICK COUNTY, KANSAS
(DOC.#/FLM-PG-28758025)

BOARD OF COUNTY COMMISSIONERS
OF SEDGWICK COUNTY, KANSAS
(DOC.#/FLM-PG-28758025)

LOT	BLOCK	ELEVATION
16-19, 21-36	A	1354.0
91-93, 106-108	A	1329.0
109-114	A	1330.0
115-117	A	1331.0
118-128	A	1333.0
129-133	A	1334.0
1-8, 13-20	F	1343.5
41-49	F	1343.0
2-9	H	1341.0
36-40	H	1341.0
60-64	H	1340.0
66-73	H	1340.0
75-77	H	1341.0

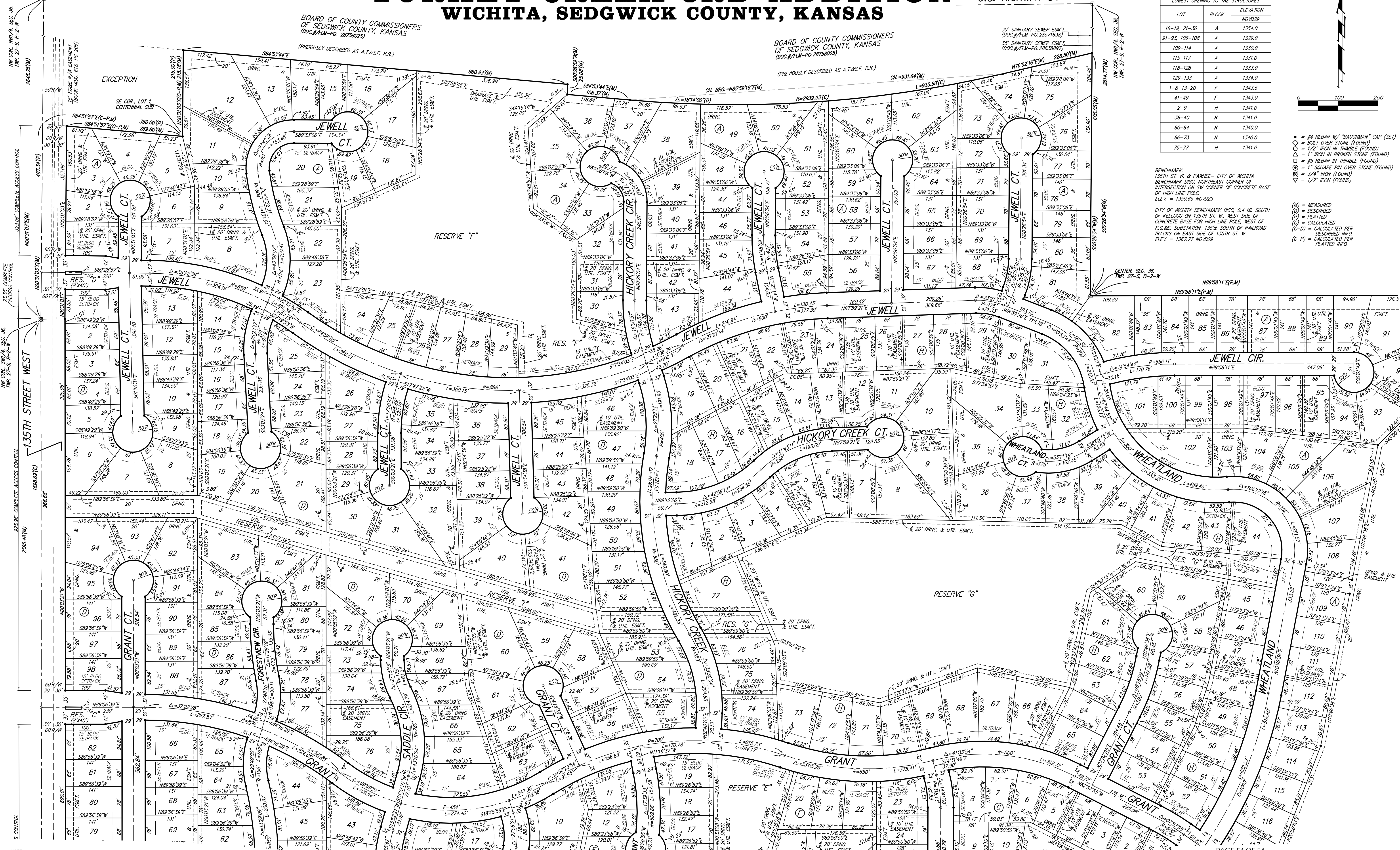


- = #4 REBAR W/ "BAUGHMAN" CAP (SET)
- = BOLT OVER STONE (FOUND)
- = 1" IRON IN THIMBLE (FOUND)
- ◇ = #5 REBAR IN THIMBLE (FOUND)
- △ = 1" SQUARE PIN OVER STONE (FOUND)
- ▽ = 3/4" IRON (FOUND)
- ▽ = 1/2" IRON (FOUND)

BENCHMARK:
135TH ST. W. & PAWNEE - CITY OF WICHITA
BENCHMARK DISC. NORTH CORNER OF
CONCRETE BASE FOR HIGH LINE POLE, WEST OF
K.C.R.R. SUBSTATION, 135 1/2' SOUTH OF RAILROAD
TRACKS ON EAST SIDE OF 135TH ST. W.
ELEV. = 1359.65 NGVD29

CITY OF WICHITA BENCHMARK DISC. 0.4 M. SOUTH
OF KELLOGG ON 135TH ST. W., WEST SIDE OF
CONCRETE BASE FOR HIGH LINE POLE, WEST OF
K.C.R.R. SUBSTATION, 135 1/2' SOUTH OF RAILROAD
TRACKS ON EAST SIDE OF 135TH ST. W.
ELEV. = 1367.77 NGVD29

- (M) = MEASURED
- (D) = DESCRIBED
- (P) = PLATTED
- (C) = CALCULATED
- (C-D) = CALCULATED PER DESCRIBED INFO
- (C-P) = CALCULATED PER PLATTED INFO



NOTE:
A master grading plan for drainage has been developed for this subdivision
and is on file with the City of Wichita, Kansas. All drainage easements,
right-of-ways, or reserves shall remain at established grades or as
modified with the approval of the City Engineer of the City of Wichita,
Kansas. No obstructions which impede the flow of this drainage system
shall be allowed.