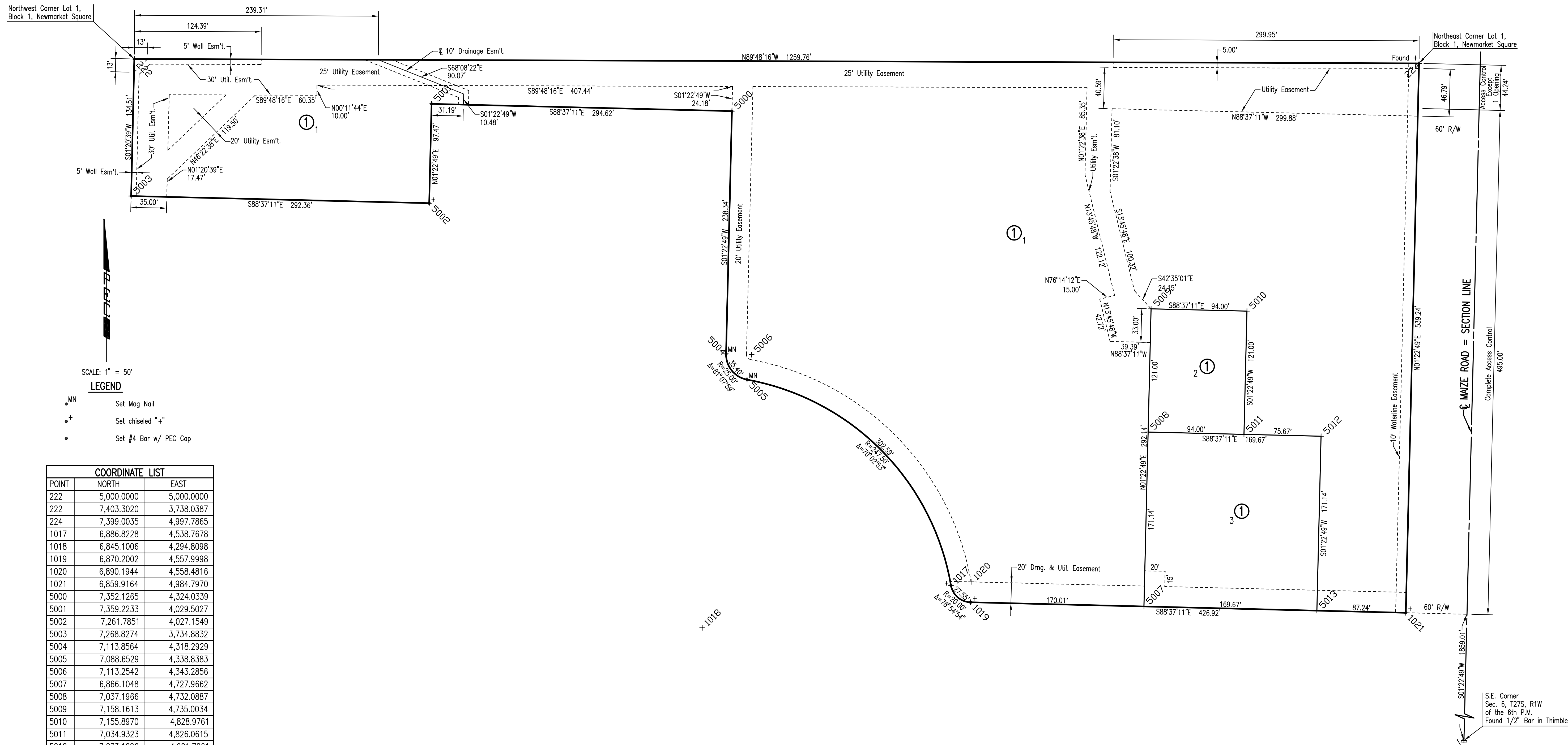


NEWMARKET SQUARE PHASE II

AN ADDITION TO WICHITA, SEDGWICK COUNTY, KANSAS



SCALE: 1" = 50'

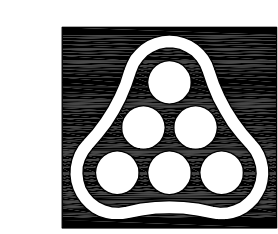
LEGEND

- MN Set Mag Nail
- + Set chiseled "+"
- Set #4 Bar w/ PEC Cap

COORDINATE LIST		
POINT	NORTH	EAST
222	5,000.0000	5,000.0000
222	7,403.3020	3,738.0387
224	7,399.0035	4,997.7865
1017	6,886.8228	4,538.7678
1018	6,845.1006	4,294.8098
1019	6,870.2002	4,557.9998
1020	6,890.1944	4,558.4816
1021	6,859.9164	4,984.7970
5000	7,352.1265	4,324.0339
5001	7,359.2233	4,029.5027
5002	7,261.7851	4,027.1549
5003	7,268.8274	3,734.8832
5004	7,113.8564	4,318.2929
5005	7,088.6529	4,338.8383
5006	7,113.2542	4,343.2856
5007	6,866.1048	4,727.9662
5008	7,037.1966	4,732.0887
5009	7,158.1613	4,735.0034
5010	7,155.8970	4,828.9761
5011	7,034.9323	4,826.0615
5012	7,033.1096	4,901.7061
5013	6,862.0178	4,897.5836

②22 = COORDINATE POINT NO.

Served 02-18-2008 1:25:18 PM by BJS
 Plot Scale 1:50 02-19-2008 5:38:09 PM
 G:\2007\07448\001\Site Civil\ACCESS ROAD\PRIVATE SMS\07448-001-C-Final Plat



No.	Revision	By	Date
NEWMARKET SQUARE-PHASE 2 PRIVATE STORM WATER SEWER IMPROVEMENTS PLAT JAMES L. ARMOUR, P.E. - CITY ENGINEER CITY OF WICHITA PRIVATE PROJECT NO. 1830 PPS (607861) Professional Engineering Consultants, P.A. 303 S. TOPEKA • WICHITA, KANSAS 67202 316-262-2691 • FAX 316-262-3003			
Designed by	BMM	Job No.	35-07448-001
Drawn by	BJS, TAT	Date	August 2007
			Sheet 3 of 13