

NEWMARKET SQUARE

AN ADDITION TO WICHITA, SEDGWICK COUNTY, KANSAS



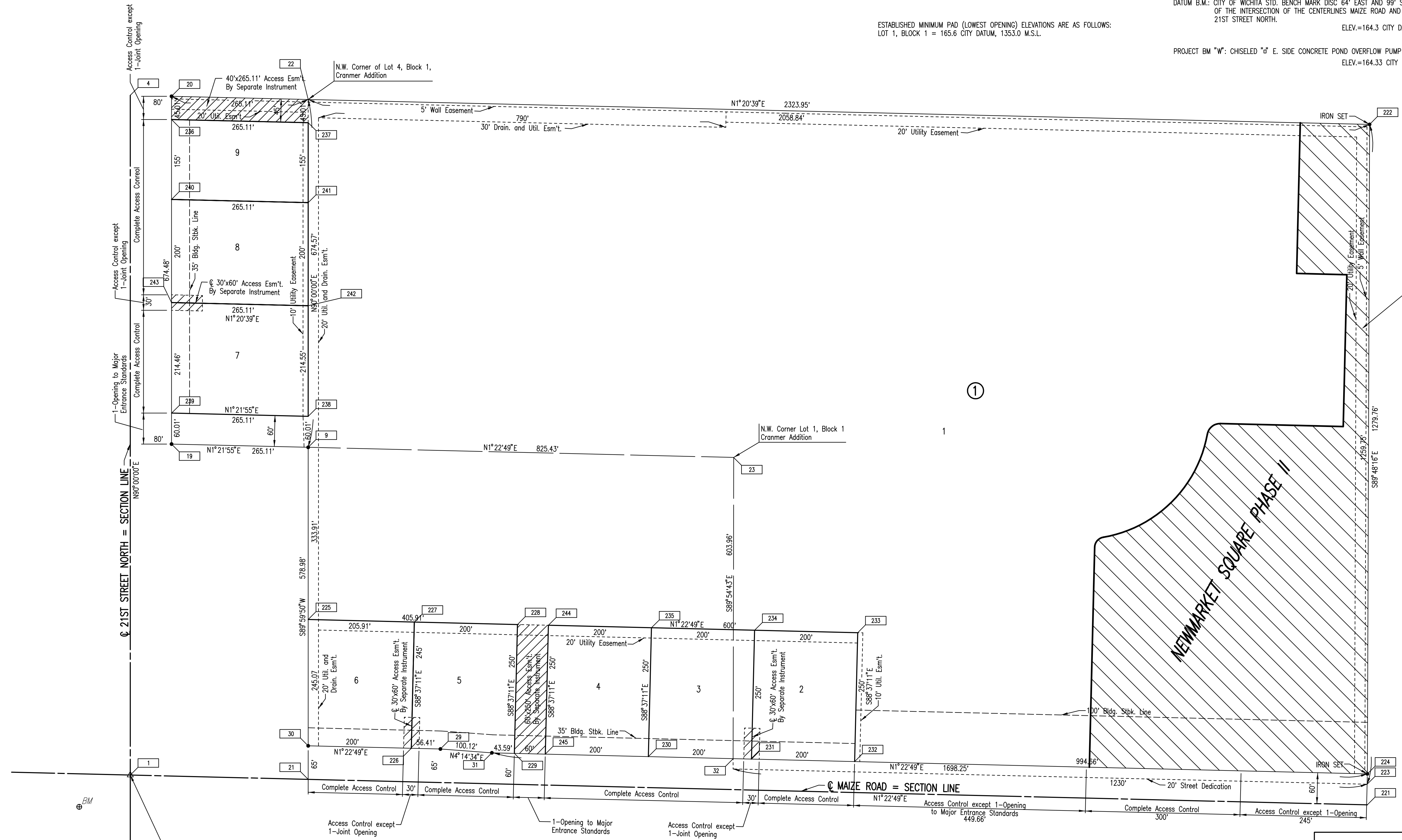
SCALE: 1"=200'

• = IRON FOUND

DATUM B.M.: CITY OF WICHITA STD. BENCH MARK DISC 64" EAST AND 99" SOUTH OF THE INTERSECTION OF THE CENTERLINES MAIZE ROAD AND 21ST STREET NORTH.
ELEV.=164.3 CITY DATUM

PROJECT B.M. "W": CHISELED "d" E. SIDE CONCRETE POND OVERFLOW PUMP SITE.
ELEV.=164.33 CITY DATUM

ESTABLISHED MINIMUM PAD (LOWEST OPENING) ELEVATIONS ARE AS FOLLOWS:
LOT 1, BLOCK 1 = 165.6 CITY DATUM, 1353.0 M.S.L.



Replatted as Newmarket Square Phase II
See Sheet No. 3

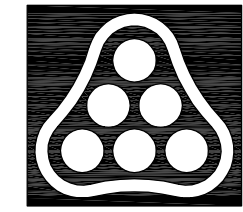
PLAT COORDINATES

POINT	COORDINATE LIST	
	NORTH	EAST
1	5000.0000	5000.0000
4	5000.0001	3681.6447
9	5345.0324	4364.3162
22	5345.0325	3689.7409
221	7398.7987	5057.7971
222	7403.3020	3738.0387
223	7398.9352	5017.7888
224	7399.0035	4997.7847
225	5345.0482	4698.2236
227	5550.9031	4703.1836
228	5750.8450	4708.0010
232	6404.6317	4973.8260
233	6410.6535	4723.8986
234	6210.7116	4719.0811
235	6010.7696	4714.2637
244	5810.8276	4709.4462

① = COORDINATE POINT NO.

Sowed 02-18-2008 1:28:04 PM by BJS
 Plot Scale 1:100 02-19-2008 3:40:50 PM by BJS
 Q:\2007\07448\001\Site Civil\ACCESS ROAD\PRIVATE SMS\07448-001-C-NEWMARKET PLAT

S.E. Corner
Sec. 6, T27S, R1W
of the 6th P.M.
Found 1/2" Bar in Thimble



No.	Revision	By	Date
NEWMARKET SQUARE-PHASE 2 PRIVATE STORM WATER SEWER IMPROVEMENTS PLAT JAMES L. ARMOUR, P.E. - CITY ENGINEER CITY OF WICHITA PRIVATE PROJECT NO. 1830 PPS (607861) Professional Engineering Consultants, P.A. 303 S. TOPEKA • WICHITA, KANSAS 67202 316-262-2691 • FAX 316-262-3003			
Designed by	BMM	Job No.	35-07448-001
Drawn by	BJS, TAT	Date	August 2007