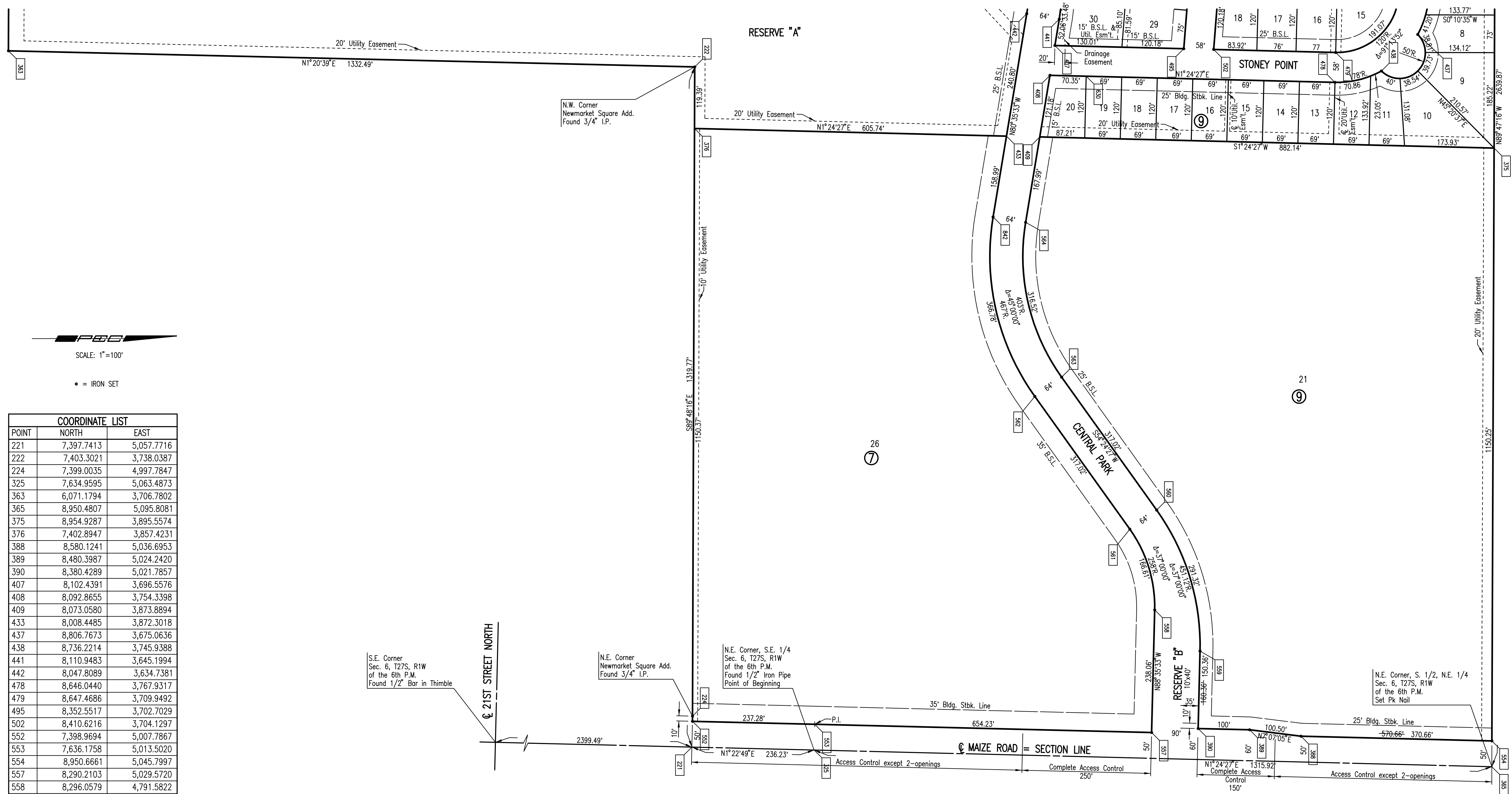


# EVERGREEN

AN ADDITION TO WICHITA, SEDGWICK COUNTY, KANSAS



SCALE: 1"=100'  
 • = IRON SET

COORDINATE LIST		
POINT	NORTH	EAST
221	7,397.7413	5,057.7716
222	7,403.3021	3,738.0387
224	7,399.0035	4,997.7847
325	7,634.9595	5,063.4873
363	6,071.1794	3,706.7802
365	8,950.4807	5,095.8081
375	8,954.9287	3,895.5574
376	7,402.8947	3,857.4231
388	8,580.1241	5,036.6953
389	8,480.3987	5,024.2420
390	8,380.4289	5,021.7857
407	8,102.4391	3,696.5576
408	8,092.8655	3,754.3398
409	8,073.0580	3,873.8894
433	8,008.4485	3,872.3018
437	8,806.7673	3,675.0636
438	8,736.2214	3,745.9388
441	8,110.9483	3,645.1994
442	8,047.8089	3,634.7381
478	8,646.0440	3,767.9317
479	8,647.4686	3,709.9492
495	8,352.5517	3,702.7029
502	8,410.6216	3,704.1297
552	7,398.9694	5,007.7867
553	7,636.1758	5,013.5020
554	8,950.6661	5,045.7997
557	8,290.2103	5,029.5720
558	8,296.0579	4,791.5822
559	8,384.1221	4,871.4751
560	8,299.9787	4,597.8355
561	8,247.9354	4,635.0846
562	8,063.4258	4,377.2930
563	8,115.4691	4,340.0440
564	8,045.5995	4,039.6189
842	7,982.4602	4,029.1579

221 = COORDINATE POINT NO.

S.E. Corner  
Sec. 6, T27S, R1W  
of the 6th P.M.  
Found 1/2" Bar in Thimble

N.E. Corner  
Newmarket Square Add.  
Found 3/4" I.P.

N.E. Corner, S.E. 1/4  
Sec. 6, T27S, R1W  
of the 6th P.M.  
Found 1/2" Iron Pipe  
Point of Beginning

N.E. Corner, S. 1/2, N.E. 1/4  
Sec. 6, T27S, R1W  
of the 6th P.M.  
Set Pk Nail

21ST STREET NORTH

MAIZE ROAD = SECTION LINE

No.	Revision	By	Date
NEWMARKET SQUARE-PHASE 2 PRIVATE STORM WATER SEWER IMPROVEMENTS <b>PLAT</b> JAMES L. ARMOUR, P.E. - CITY ENGINEER CITY OF WICHITA PRIVATE PROJECT NO. 1830 PPS (607861) <b>Professional Engineering Consultants, P.A.</b> 303 S. TOPEKA • WICHITA, KANSAS 67202 316-262-2691 • FAX 316-262-3003			
Designed by	BMM	Job No.	35-07448-001
Drawn by	BJS, TAT	Date	August 2007
			Sheet 5 of 13

Sowed 11-29-2007 4:27:38 PM by BJS  
 Plot Scale 1:100 02-19-2008 3:42:37 PM by BJS  
 C:\2007\07448\001\Site Civil\ACCESS ROAD\PRIVATE SMS\07448-001-C-Final Plat Evergreen