

**GENERAL NOTES:**

1. City of Wichita Datum.
2. Contractor will be required to provide a minimum advance notice of twenty-four (24) hours to utility companies prior to starting any excavation as follows:  
  
 Kansas One-Call 1-800-344-7233  
 The Contractor must notify the following in case of an emergency:  
  
 Cox Cable  
 Kansas Gas & Electric - Gas  
 Kansas Gas & Electric - Electric  
 Arkla Gas Company  
 Southwestern Bell Tel. Co.  
 City of Wichita Water Department  
 City of Wichita Sewer Maintenance
3. Existing utility lines and their location, as shown on the plans, represent the best information obtainable for design. The contractor will be required to work around existing utilities within the right-of-way which do not conflict with proposed construction.
4. Rubble from the removal of miscellaneous structures and excess excavation which is to be wasted shall be disposed of on sites to be provided by the Contractor. These sites shall be approved by the Engineer as to suitability, appearance and site location. Locations that, in the opinion of the Engineer, will leave an unsightly appearance will not be approved.  
  
 All disposal sites must be approved by the Kansas Department of Health and Environment. Material either stockpiled or disposed of in a flood plain would require a Kansas State Board of Agriculture permit. Any material dumped in waters of the United States or wetlands is subject to U.S. Corps. of Engineers permitting regulations. Any material buried or stockpiled beyond approved construction limits would require additional archaeological investigations unless buried in a previously approved borrow location.
5. The Contractor shall be responsible for maintaining continuous flow of sewage through construction. Contractor's proposed method for maintaining sewage flow shall be approved by the Engineer. Cost of maintaining flow of sewage through construction will not be paid for directly and this cost shall be considered subsidiary to the other pay items of the work.
6. The Contractor shall be responsible for preserving property irons. The Contractor will be required to re-establish any property irons which are damaged or destroyed by construction operations. Such irons shall be re-established by a licensed land surveyor in accordance with state laws.
7. Trees and shrubs in public right-of-way which are in direct conflict with proposed new construction shall be removed by the Contractor with the Engineer's approval. Trees and shrubs which are not in direct conflict with the proposed new construction shall be saved and protected from damage.
8. Contractor shall vacuum test all manholes according to the City of Wichita standard specifications.
9. The tops of all Manholes to be set 0.4 feet above existing ground unless otherwise noted.
10. All areas disturbed by sewer construction, i.e. R/W, easements, and adjacent properties shall be restored with the same grass/sod as per AR 78.
11. Contractor shall maintain all existing BMP(s) on project site during construction. Contractor shall repair or replace any existing BMP(s) that are damaged (Cost subsidiary to site restoration). If BMP(s) were damaged prior to contractor beginning work on project, notify construction inspector or engineer.
12. Contractor shall backfill trench with sand and flush per City of Wichita specifications.
13. Traffic control as necessary shall be per the latest addition of the MUTCD.
14. Depth & location of all existing utilities shown must be field verified.
15. Prior to starting work within the K-96 right-of-way, the Contractor shall contact Ben Koerner, KDOT, 316-744-1271, and obtain a right of way permit.

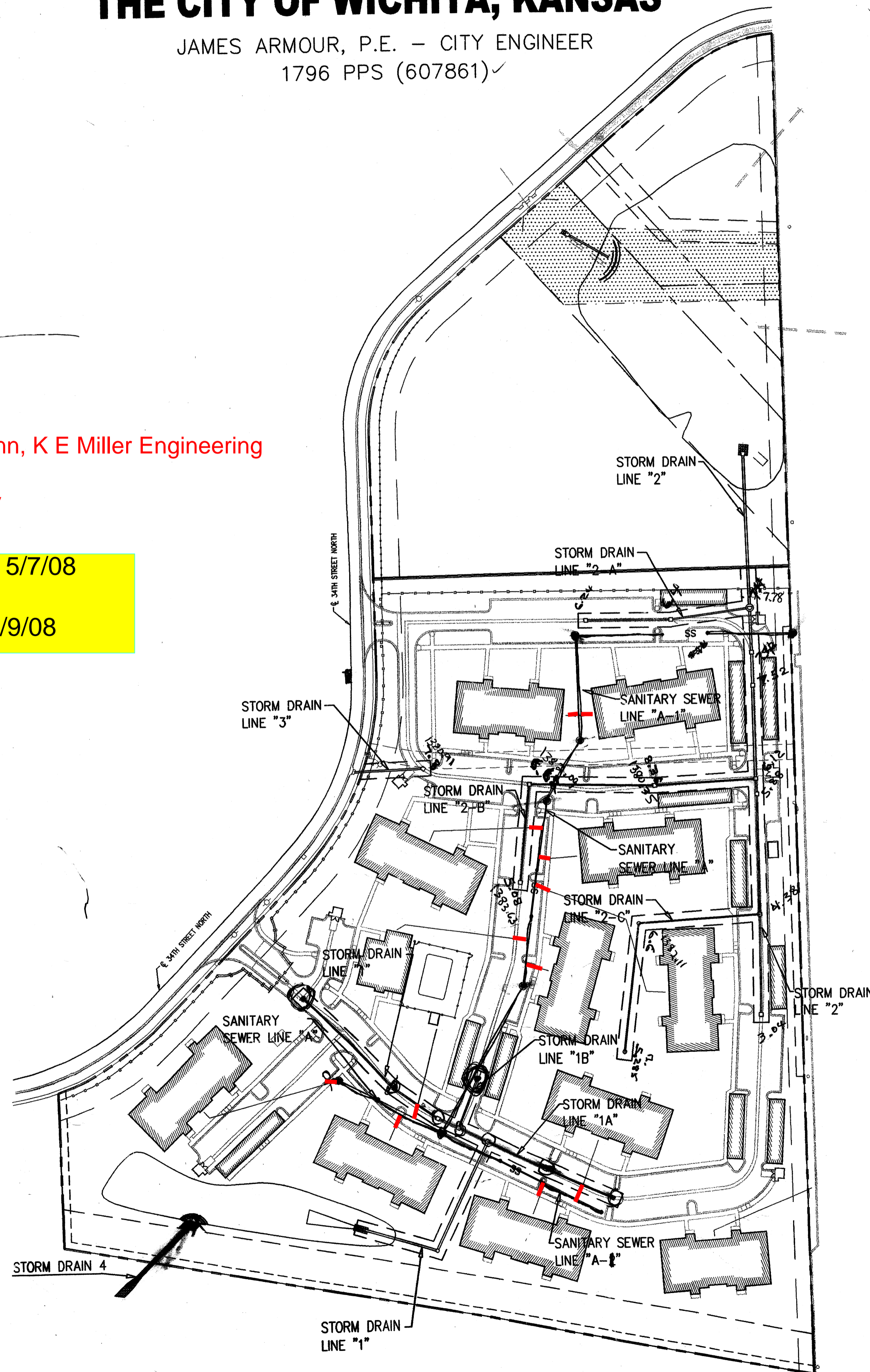
CONSTRUCTION PLANS  
 PRIVATE SANITARY SEWER AND STORM DRAIN EXTENSIONS  
**Lots 1 and 2, Block 1 and Lot 1, Block 2 Killarney Plaza Second Addition**

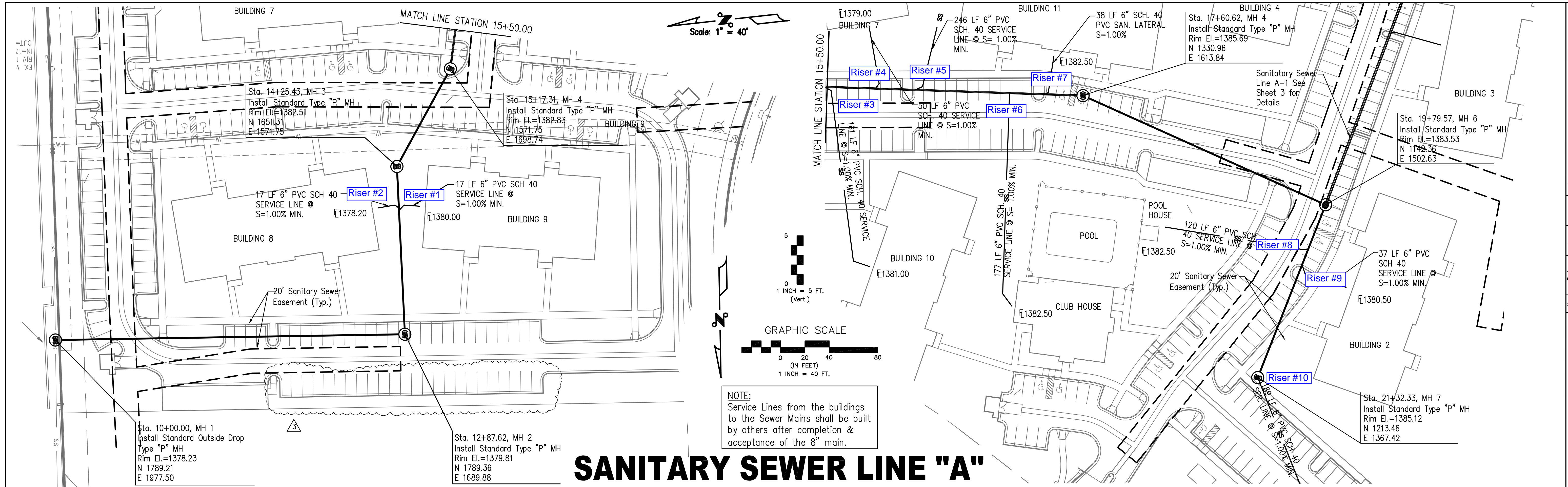
TO  
**THE CITY OF WICHITA, KANSAS**

JAMES ARMOUR, P.E. - CITY ENGINEER  
 1796 PPS (607861)

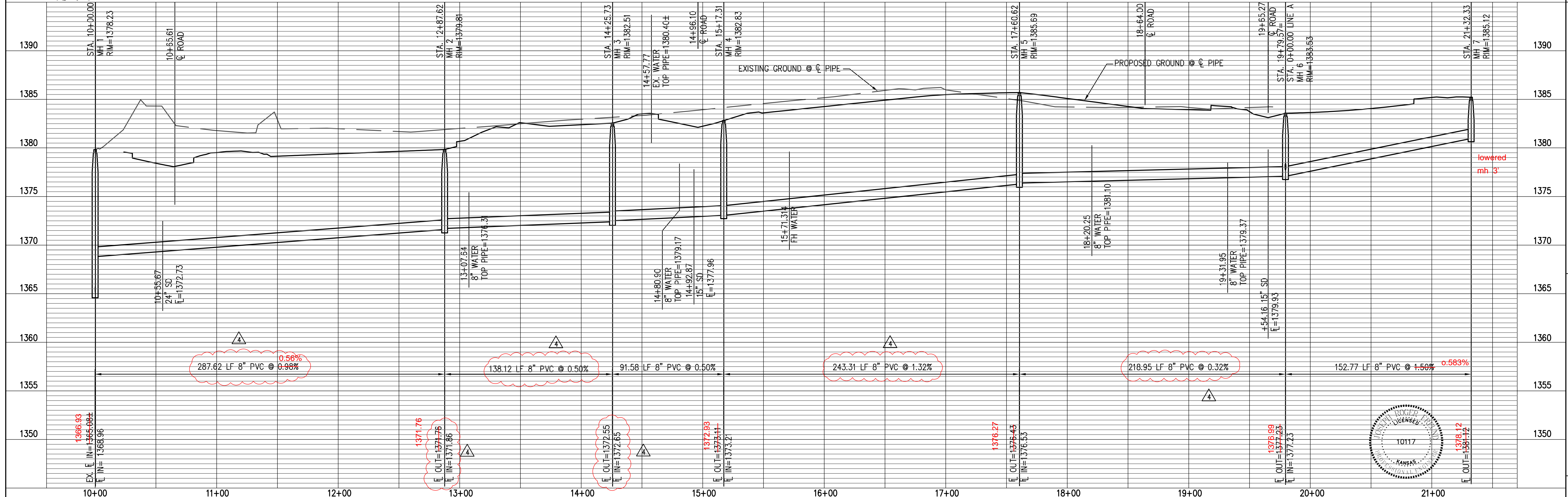
As built:  
 Contractor: Mies  
 Inspector: Larry Gann, K E Miller Engineering  
 pdf: LG 5-1-08  
 Sanitary Sewer only

SS Released 5/7/08  
 Risers  
 .pdf by JDL 5/9/08





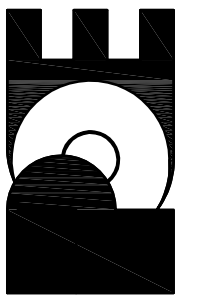
# SANITARY SEWER LINE "A"



**PLAN & PROFILE "A"**  
**SANITARY SEWER LINE "A"**  
 Webber Group  
 Inwood Apartments

No.	Date	By	Approved	Revision
1	01-24-08	K/W	JRF	CHANGED SAN. SEWER ELEVATIONS
2	11-09-07	K/W	JRF	DELETED 3 GARAGES

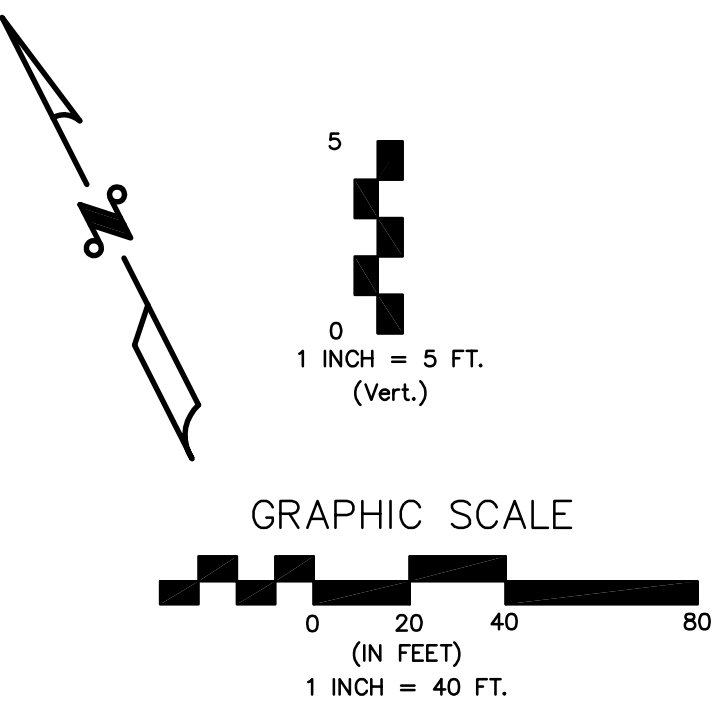
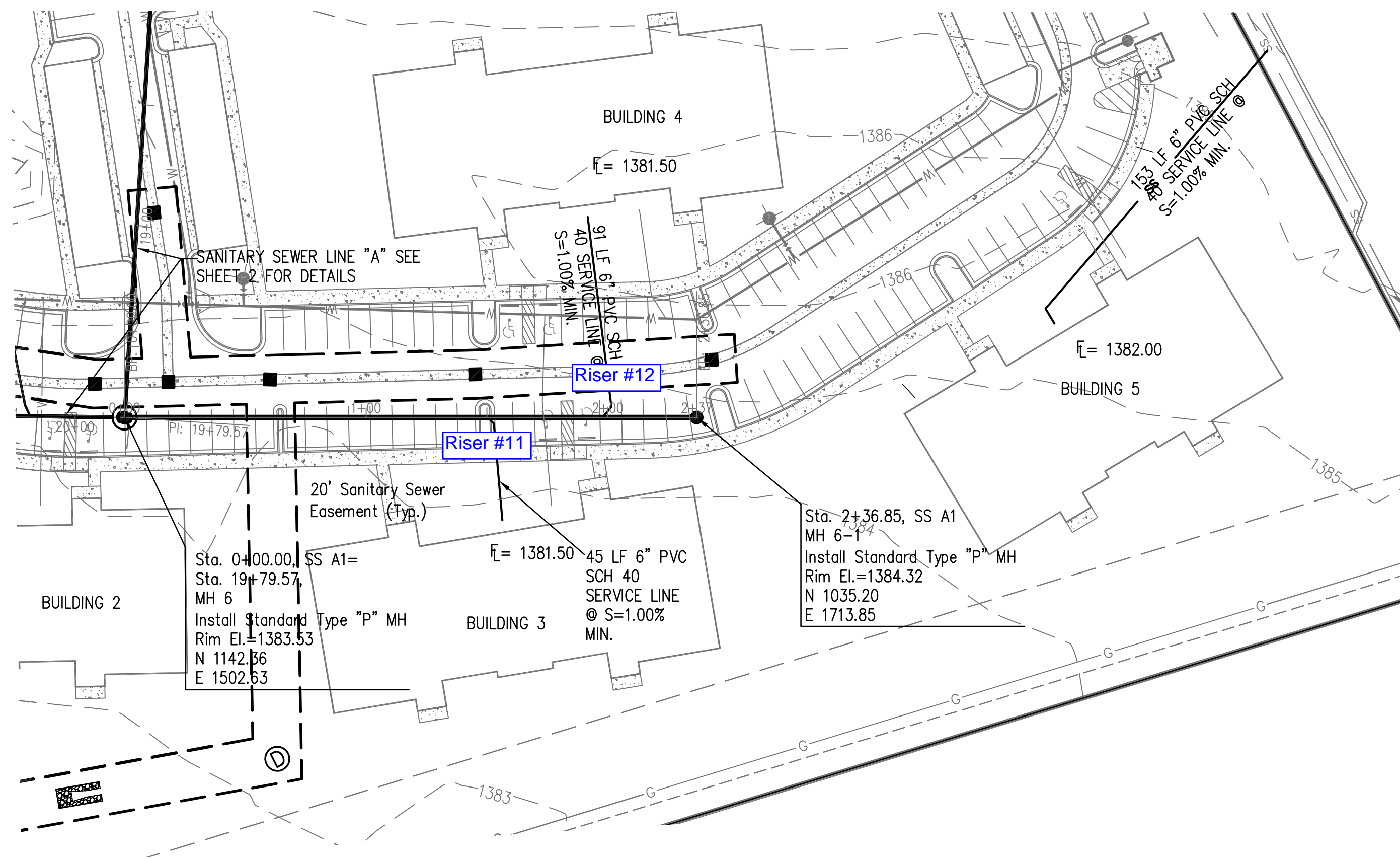
**POE & ASSOCIATES, INC.**  
 CONSULTING ENGINEERS  
 5940 E. Central, Suite 200 ■ Wichita, KS 67208-4422  
 Phone 316/685-4114 ■ FAX 316/685-4444



Engineer: JRF  
 Designer: K/W  
 P.O. Job No.: 1909  
 Date: 8-31-07

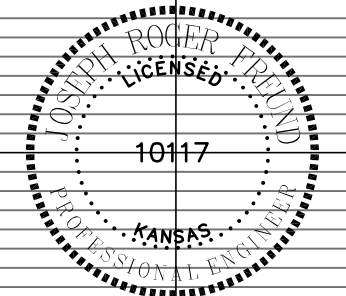
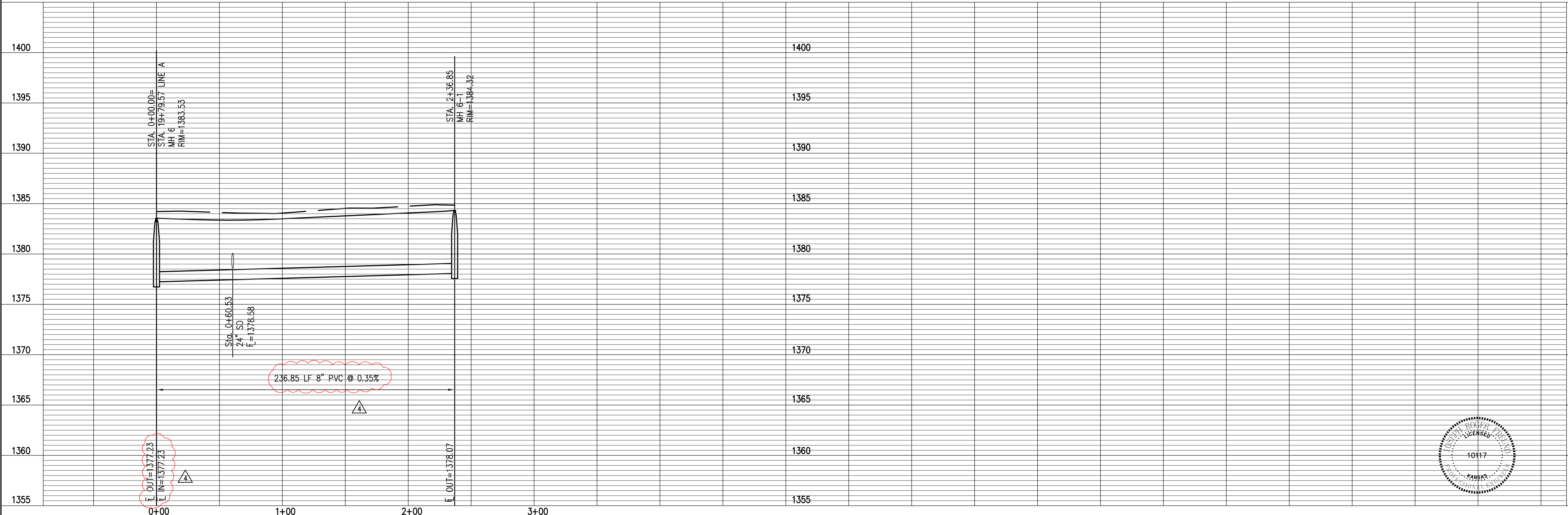
Sheet 2  
 C-26 of 20

P:\1000A Revamped Inwood\Working Drawings\SSHEETS\26.P & P.dwg, Sheet 1, 4/23/2008 8:58:03 AM



**NOTE:**  
Service Lines from the buildings to the Sewer Mains shall be built by others after completion & acceptance of the 8" main.

# SANITARY SEWER LINE "A-1"



<b>POF &amp; ASSOCIATES, INC.</b> CONSULTING ENGINEERS 5940 E. Central, Suite 200 ■ Wichita, KS 67208-4942 Phone 316/685-4114 ■ FAX 316/685-4444											
Engineer: JRF Designer: K/W Pce Job No.: 1909 Date: 8-31-07	PLAN & PROFILE SAN. SEWER LINE A-1, A-2 Webber Group Inwood Apartments										
Sheet 3 C-27 of 20	Revision Table: <table border="1"> <thead> <tr> <th>No.</th> <th>Date</th> <th>By</th> <th>Approved</th> <th>Revision</th> </tr> </thead> <tbody> <tr> <td>1</td> <td></td> <td></td> <td></td> <td>CHANGED SAN. SEWER ELEVATIONS</td> </tr> </tbody> </table>	No.	Date	By	Approved	Revision	1				CHANGED SAN. SEWER ELEVATIONS
No.	Date	By	Approved	Revision							
1				CHANGED SAN. SEWER ELEVATIONS							

P:\1000A Rev\Inwood\Working Drawings\PS\SHEET27.P & P SAN A1 - Sheet 2.mxd, Sheet 2, 4/9/2008 8:58:59 AM

Line	Riser #	SS Sta.	Upstream	Downstream	Flow Line	Direct. From	Facing
	#	Tee	MH	MH	Tee	Main	
Line A	1	13+90.62	34.81'	103.00'	1372.37	west	South
Line A	2	13+92.62	32.81'	105.00'	1372.38	east	South
Line A	3	15+50.00	210.62'	32.69'	1373.64	west	South
Line A	4	15+90.00	170.62'	72.69'	1374.16	east	South
Line A	5	16+22.62	138.00'	105.31'	1374.60	east	South
Line A	6	16+99.62	61.00'	182.31'	1375.60	west	South
Line A	7	17+30.62	30.00'	213.31'	1376.00	east	South
Line A	8	20+19.57	112.76'	40.00'	1377.46	north	West
Line A	9	20+32.57	99.76'	53.00'	1377.53	south	West
Line A	10	21+32.33	at MH	152.77'	1378.12	north	West
Line A-1	11	01+51.00	85.85'	151.00'	1377.75	south	East
Line A-1	12	01+98.85	38.00'	198.85'	1377.92	north	East