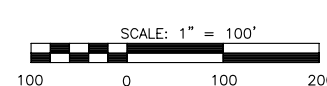
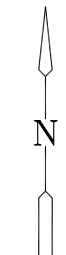
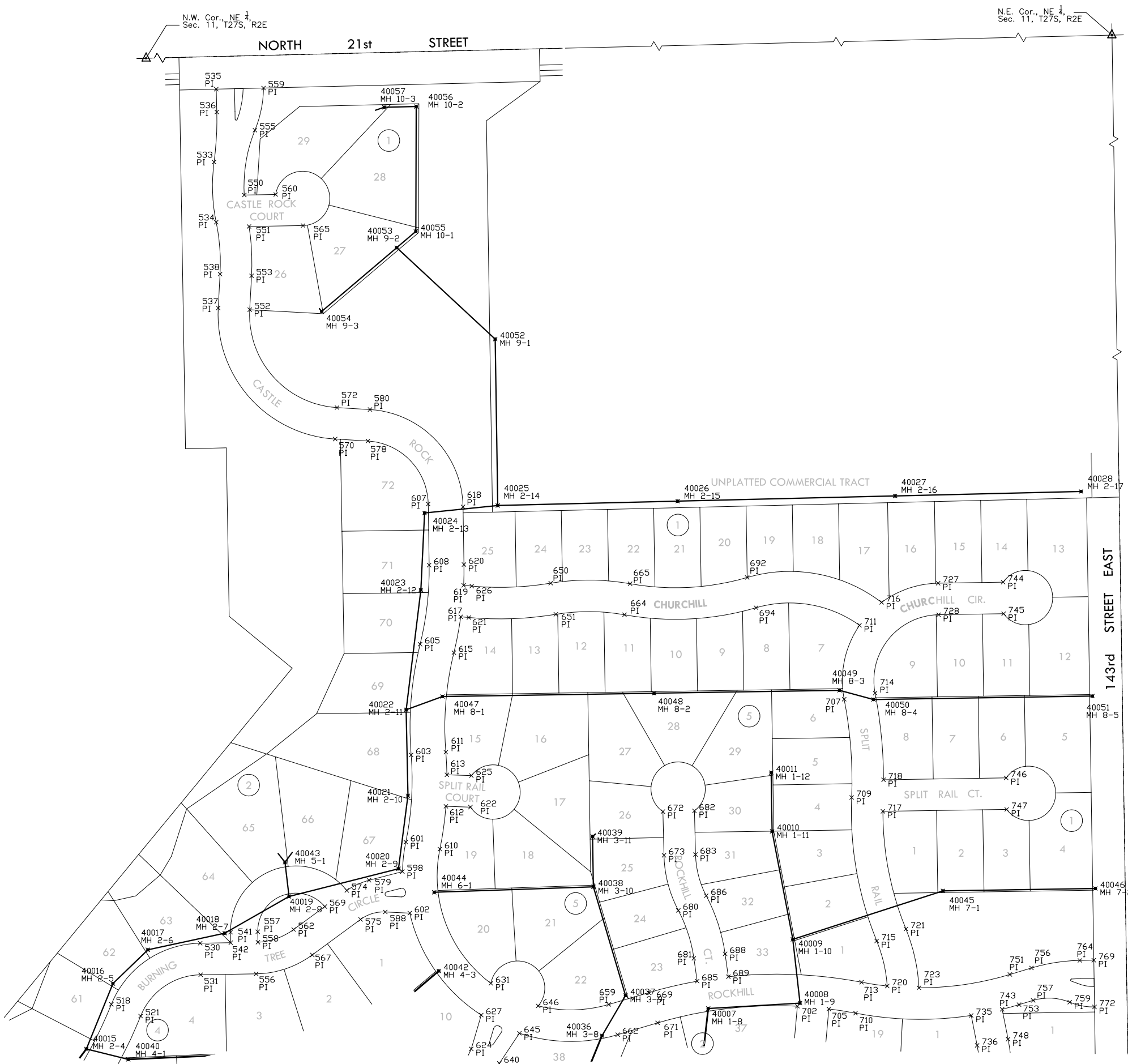


PLAT IRONS				PLAT IRONS			
Point #	Northing	Easting	Desc.	Point #	Northing	Easting	Desc.
500	1697938.97	1694195.16	PI	639	1698174.22	1695679.98	PI
503	1697906.95	1694302.92	PI	640	1698105.53	1695680.52	PI
504	1697583.62	1694550.95	PI	642	1698173.33	1695681.73	PI
506	1697983.68	1694599.74	PI	643	1698163.19	1695684.42	PI
507	1697606.35	1694604.42	PI	645	1698161.00	1695717.52	PI
509	1697835.99	1694641.38	PI	646	1698211.34	1695752.11	PI
510	1697785.96	1694670.73	PI	647	1699911.87	1695755.64	PI
513	1697966.27	1694594.60	PI	650	1698989.85	1695775.06	PI
514	1697951.61	1694902.85	PI	651	1698931.63	1695784.55	PI
515	1698011.60	1694920.40	PI	656	1697491.18	1695860.14	PI
516	1697997.20	1694938.71	PI	657	1697563.54	1695877.56	PI
518	1698214.25	1694966.99	PI	658	1697500.51	1695878.96	PI
521	1698192.68	1695020.82	PI	659	1698214.01	1695881.93	PI
523	1697601.17	1695037.05	PI	660	1697439.22	1695885.90	PI
524	1697543.19	1695038.42	PI	661	1697624.03	1695890.45	PI
526	1697964.30	1695079.80	PI	662	1698158.39	1695898.38	PI
527	1697907.55	1695091.80	PI	663	1697448.54	1695904.71	PI
528	1698985.96	1695092.29	PI	664	1698930.79	1695910.82	PI
529	1699236.05	1695103.42	PI	665	1698987.87	1695921.07	PI
530	1698266.65	1695130.29	PI	666	1697543.11	1695934.62	PI
531	1698268.66	1695132.22	PI	668	1698247.71	1695981.51	PI
533	1699763.43	1695155.86	PI	669	1698235.71	1695955.28	PI
534	1699652.87	1695159.76	PI	670	1697725.41	1695957.94	PI
535	1699897.58	1695159.90	PI	671	1698180.09	1695971.73	PI
536	1699855.47	1695160.91	PI	672	1698568.71	1695981.51	PI
537	1699495.07	1695163.52	PI	673	1698488.37	1695983.43	PI
538	1699557.36	1695166.92	PI	674	1697676.80	1695989.57	PI
539	1699237.85	1695178.40	PI	675	1697401.76	1695994.13	PI
540	1699227.82	1695180.74	PI	676	1697459.57	1695998.77	PI
541	1698346.92	1695186.20	PI	680	1698386.97	1696009.84	PI
542	1698327.54	1695186.51	PI	681	1698298.86	1696038.44	PI
543	1698988.38	1695193.39	PI	682	1698570.10	1696039.49	PI
544	1698956.27	1695194.40	PI	683	1698497.76	1696041.42	PI
545	1698942.41	1695194.57	PI	685	1698256.80	1696044.45	PI
547	1698841.72	1695198.45	PI	686	1698414.04	1696061.13	PI
548	1698988.77	1695209.38	PI	687	1697811.03	1696089.49	PI
550	1699702.85	1695211.44	PI	688	1699247.07	1696095.95	PI
551	1699644.99	1695220.15	PI	689	1698265.02	1696101.87	PI
552	1699491.91	1695221.43	PI	690	1697762.41	1696121.12	PI
553	1699545.20	1695224.84	PI	692	1698999.39	1696136.50	PI
555	1699222.02	1695231.22	PI	694	1698943.72	1696152.77	PI
556	1698270.28	1695233.29	PI	695	1697388.90	1696154.22	PI
557	1698347.71	1695236.19	PI	696	1697446.71	1696158.87	PI
558	1698328.40	1695236.50	PI	699	1698014.50	1696211.63	PI
559	1698989.67	1695246.90	PI	702	1698210.81	1696228.84	PI
560	1698703.83	1695251.21	PI	703	1697498.17	1696267.84	PI
561	1698832.50	1695299.48	PI	704	1698009.43	1696269.41	PI
562	1698351.79	1695302.15	PI	705	1698205.74	1696286.62	PI
565	1699646.67	1695319.53	PI	707	1698775.36	1696314.84	PI
566	1697906.89	1695331.13	PI	708	1697465.02	1696315.51	PI
567	1698305.07	1695336.52	PI	709	1698594.75	1696328.61	PI
568	1697963.57	1695343.44	PI	710	1698197.94	1696335.80	PI
569	1698394.05	1695359.61	PI	711	1698911.50	1696343.15	PI
570	1698233.98	1695378.72	PI	712	1697609.30	1696345.24	PI
572	1699311.88	1695382.02	PI	713	1698254.90	1696346.73	PI
574	1698423.68	1695399.97	PI	714	1698786.54	1696371.75	PI
575	1698370.40	1695425.33	PI	715	1698330.83	1696374.72	PI
578	1698250.39	1695438.81	PI	716	1698983.58	1696383.93	PI
579	1698442.40	1695440.88	PI	717	1698569.20	1696386.06	PI
580	1699308.26	1695442.71	PI	718	1698627.22	1696387.28	PI
581	1697972.72	1695445.27	PI	719	1697576.15	1696392.83	PI
582	1698761.03	1695457.85	PI	720	1698247.85	1696394.13	PI
584	1697553.05	1695453.50	PI	721	1698352.75	1696428.42	PI
587	1697919.15	1695467.50	PI	722	1697680.57	1696440.53	PI
588	1698384.13	1695470.76	PI	723	1698244.66	1696452.42	PI
590	1698420.86	1695473.36	PI	725	1697625.55	1696458.98	PI
591	1698413.00	1695474.18	PI	727	1698988.82	1696487.71	PI
594	1698427.52	1695499.02	PI	728	1698930.83	1696488.61	PI
595	1698411.75	1695500.60	PI	731	1697701.87	1696504.39	PI
598	1698458.32	1695502.26	PI	732	1697646.85	1696522.74	PI
599	1698421.23	1695507.76	PI	733	1697648.95	1696528.67	PI
600	1698419.27	1695507.91	PI	734	1697640.21	1696533.81	PI
601	1698512.64	1695508.56	PI	735	1698193.74	1696548.51	PI
602	1698381.99	1695515.83	PI	736	1698138.75	1696559.45	PI
603	1698672.93	1695518.38	PI	737	1698036.36	1696560.10	PI
604	1698003.30	1695518.97	PI	738	1697909.44	1696561.41	PI
605	1698876.52	1695534.88	PI	739	1697829.71	1696577.95	PI
606	1697949.72	1695541.19	PI	740	1697678.35	1696578.66	PI
607	1699134.43	1695549.79	PI	742	1697669.61	1696583.80	PI
608	1699022.11	1695551.53	PI	743	1698205.06	1696605.40	PI
610	1698499.68	1695571.23	PI	744	1698990.68	1696607.26	PI
611	1698678.13	1695582.17	PI	745	1698932.69	1696608.16	PI
612	1698578.41	1695582.37	PI	746	1698630.72	1696612.84	PI
613	1698636.38	1695584.18	PI	747	1698572.73	1696613.74	PI
614	1697496.65	1695584.52	PI	748	1698150.06	1696616.34	PI
615	1698861.11	1695597.00	PI	749	1698025.77	1696617.12	PI
616	1698087.82	1695607.87	PI	750	1697921.22	1696618.21	PI
617	1698027.11	1695609.69	PI	751	1698269.11	1696619.68	PI
618	1699129.41	1695613.87	PI	752	1697841.49	1696634.74	PI
619	1698984.87	1695614.96	PI	753	1698213.59	1696636.47	PI
620	1699023.11	1695615.52	PI	756	1698281.12	1696659.39	PI
621	1698925.75	1695624.54	PI	757	1698221.46	1696662.47	PI
622	1698577.01	1695627.39	PI	759	1698218.12	1696729.71	PI
623	1697535.50	1695627.58	PI	760	1698256.92	1696732.62	PI
624	1698132.24	1695629.00	PI	761	1698260.82	1696733.08	PI
625	1698634.98	1695629.19	PI	763	1698252.76	1696744.07	PI
626	1698983.51	1695629.81	PI	764	1698295.00	1696748.44	PI
627	1698194.44	1695647.36	PI	765	1698261.50	1696748.96	PI
628	1698939.48	1695656.76	PI	767	1699145.78	1696760.80	PI
629	1698062.91	1695660.26	PI	769	1698206.39	1696774.00	PI
630	1698144.54	1695662.58	PI	770	1698261.90	1696774.52	PI
631	1698252.75	1695665.01	PI	771	1698246.90	1696774.75	PI
633	1699119.57	1695667.93	PI	772	1698209.40	1696775.33	PI
635	1698141.18	1695669.74	PI	773	1697334.70	1696789.90	PI
636	1698169.96	1695670.09	PI				



MKEC
ENGINEERING
CONSULTANTS, INC.
411 N. WEBB ROAD
WICHITA, KS. 67206
316 - 684 - 9600

SANITARY SEWER PLANS
KRUG SOUTH ADDITION
PHASE 1

BUBBLE MAP
SHEET TITLE
468-84321
PROJECT NUMBER

DESIGN BY **DFL**
DRAWN BY **DMU**
CHECKED BY **GJA**

ISSUED **February 2007**
REVISED

SHEET NO.
23 of 31

PLOTED: Wednesday, February 28, 2007 9:05:34AM

J:\CIVIL\05291.DWG (SAN) (PH) (BUBBLE).DWG