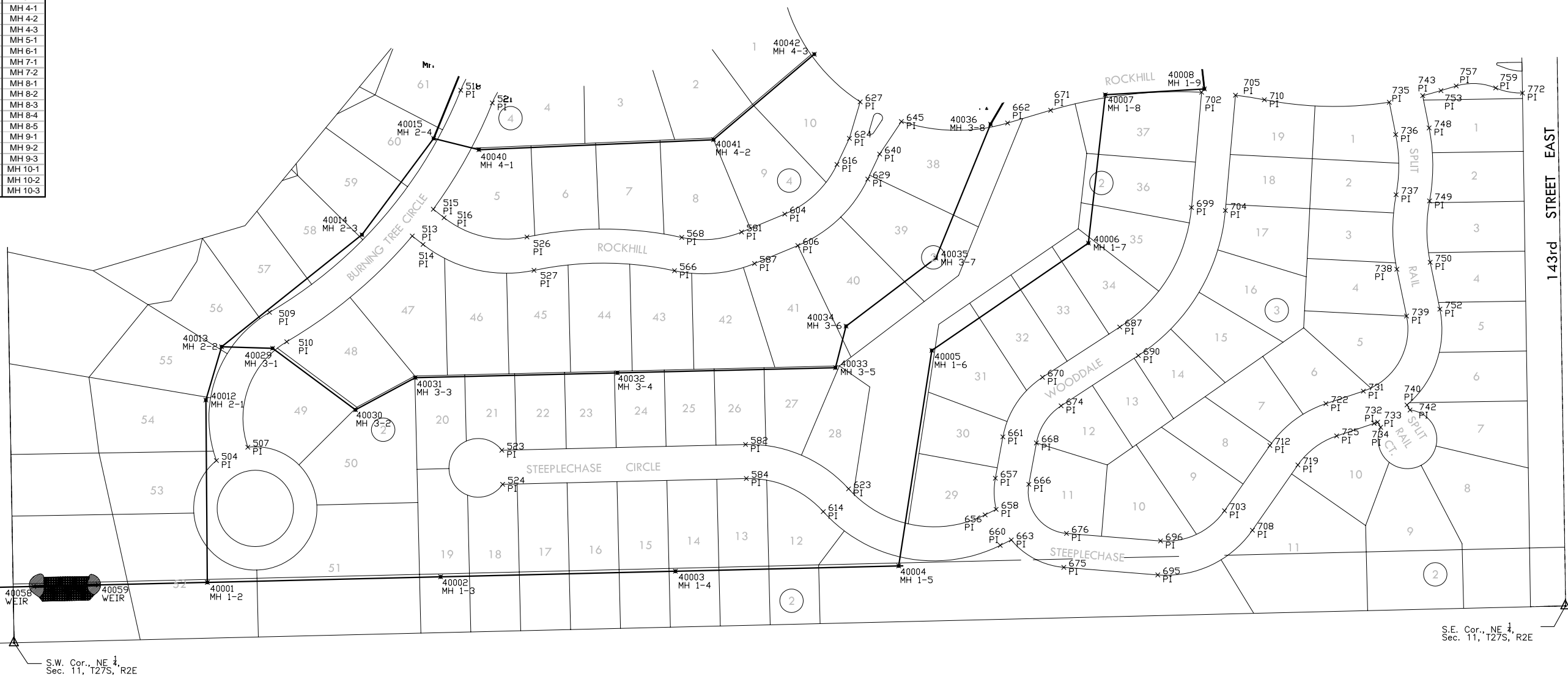
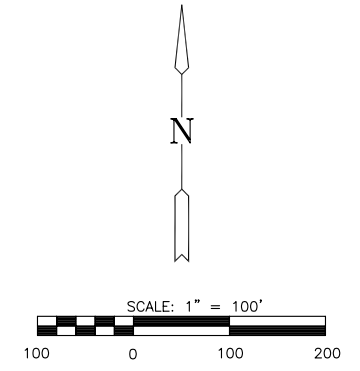


SANITARY SEWER POINTS			
Point #	Northing	Easting	Desc.
40000	1697366.70	1694135.56	MH 1-1
40001	1697376.19	1694535.45	MH 1-2
40002	1697385.63	1694932.78	MH 1-3
40003	1697395.13	1695332.66	MH 1-4
40004	1697404.17	1695712.98	MH 1-5
40005	1697771.12	1695769.38	MH 1-6
40006	1697953.88	1696036.04	MH 1-7
40007	1698206.52	1696064.80	MH 1-8
40008	1698216.48	1696233.62	MH 1-9
40009	1698333.62	1696220.45	MH 1-10
40010	1698532.53	1696182.27	MH 1-11
40011	1698640.37	1696180.60	MH 1-12
40012	1697686.70	1694533.00	MH 2-1
40013	1697777.43	1694559.84	MH 2-2
40014	1697968.20	1694798.83	MH 2-3
40015	1698132.13	1694920.93	MH 2-4
40016	1698252.36	1694969.81	MH 2-5
40017	1698314.51	1695034.13	MH 2-6
40018	1698345.09	1695175.46	MH 2-7
40019	1698412.61	1695293.69	MH 2-8
40020	1698463.55	1695495.10	MH 2-9
40021	1698597.77	1695512.48	MH 2-10
40022	1698756.11	1695509.20	MH 2-11
40023	1698976.55	1695536.23	MH 2-12
40024	1699117.99	1695543.04	MH 2-13
40025	1699131.81	1695677.74	MH 2-14
40026	1699139.74	1696008.65	MH 2-15
40027	1699149.34	1696408.53	MH 2-16
40028	1699157.54	1696750.62	MH 2-17
40029	1697774.82	1694646.59	MH 3-1
40030	1697669.97	1694787.85	MH 3-2
40031	1697724.70	1694889.61	MH 3-3
40032	1697732.88	1695233.80	MH 3-4
40033	1697741.70	1695605.23	MH 3-5
40034	1697812.45	1695623.32	MH 3-6
40035	1697928.54	1695776.30	MH 3-7
40036	1698156.43	1695869.43	MH 3-8
40037	1698230.41	1695912.71	MH 3-9
40038	1698430.30	1695853.57	MH 3-10
40039	1698523.02	1695852.13	MH 3-11
40040	1698112.97	1694997.98	MH 4-1
40041	1698129.98	1695397.62	MH 4-2
40042	1698275.59	1695569.21	MH 4-3
40043	1698475.63	1695286.32	MH 4-4
40044	1698420.35	1695560.88	MH 4-5
40045	1698422.89	1696496.64	MH 4-6
40046	1698427.24	1696776.95	MH 4-7
40047	1698780.42	1695576.03	MH 4-8
40048	1698786.46	1695965.23	MH 4-9
40049	1698791.75	1696306.37	MH 4-10
40050	1698774.96	1696368.86	MH 4-11
40051	1698781.20	1696771.46	MH 4-12
40052	1699437.83	1695672.99	MH 9-1
40053	1699606.03	1695491.81	MH 9-2
40054	1699488.65	1695353.91	MH 9-3
40055	1699636.02	1695527.04	MH 10-1
40056	1699865.66	1695527.68	MH 10-2
40057	1699864.25	1695468.86	MH 10-3

MISCELLANEOUS POINTS			
Point #	Northing	Easting	Desc.
40058	1697369.17	1694239.75	WEIR
40059	1697371.78	1694349.72	WEIR
40060	1697372.39	1693943.22	SWS MH
40061	1697396.80	1694004.24	SWS ES



SANITARY SEWER PLANS
KRUG SOUTH ADDITION
PHASE 1

BUBBLE MAP
SHEET TITLE
PROJECT NUMBER
468-84321

DESIGN BY **DFL**
DRAWN BY **DMU**
CHECKED BY **GJA**

ISSUED **February 2007**
REVISED

SHEET NO.
24 of 31

PLOTED: Wednesday, February 28, 2007 9:07:34AM

J:\CIVIL\05291\DWG\SAN\PH1\BUBBLE_2.DWG