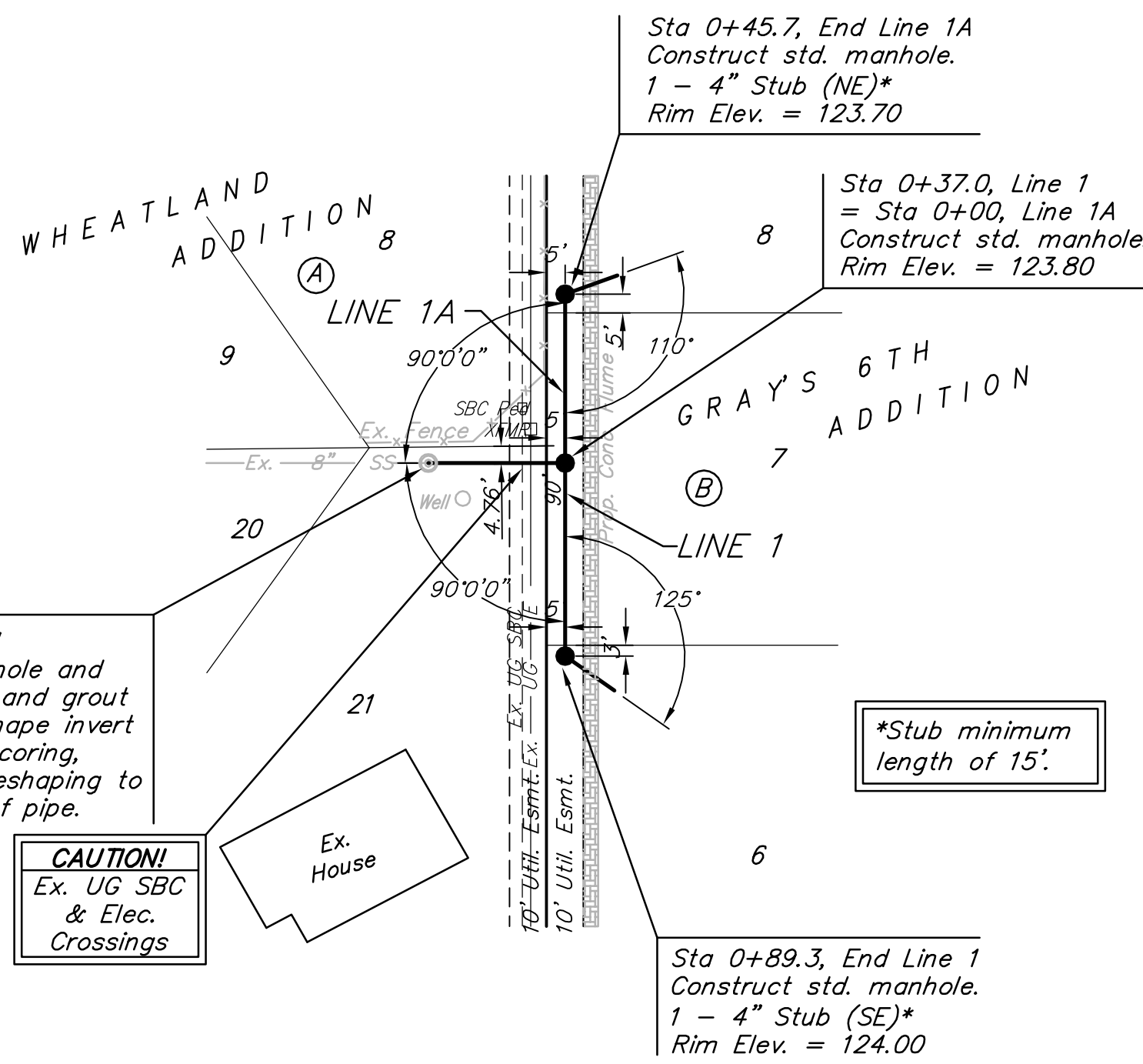
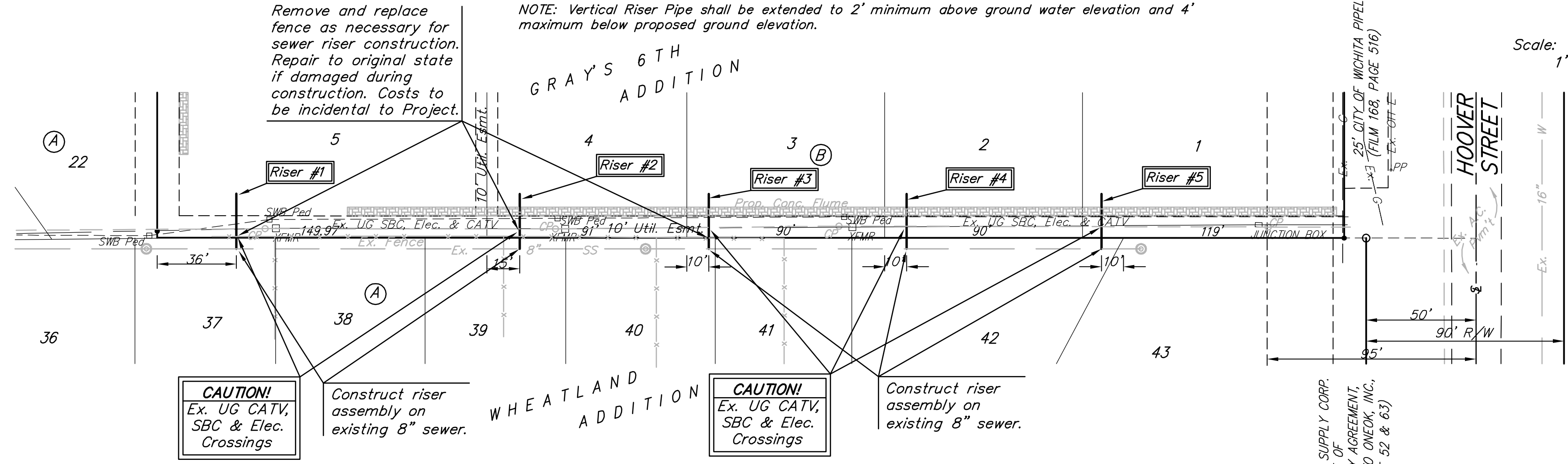


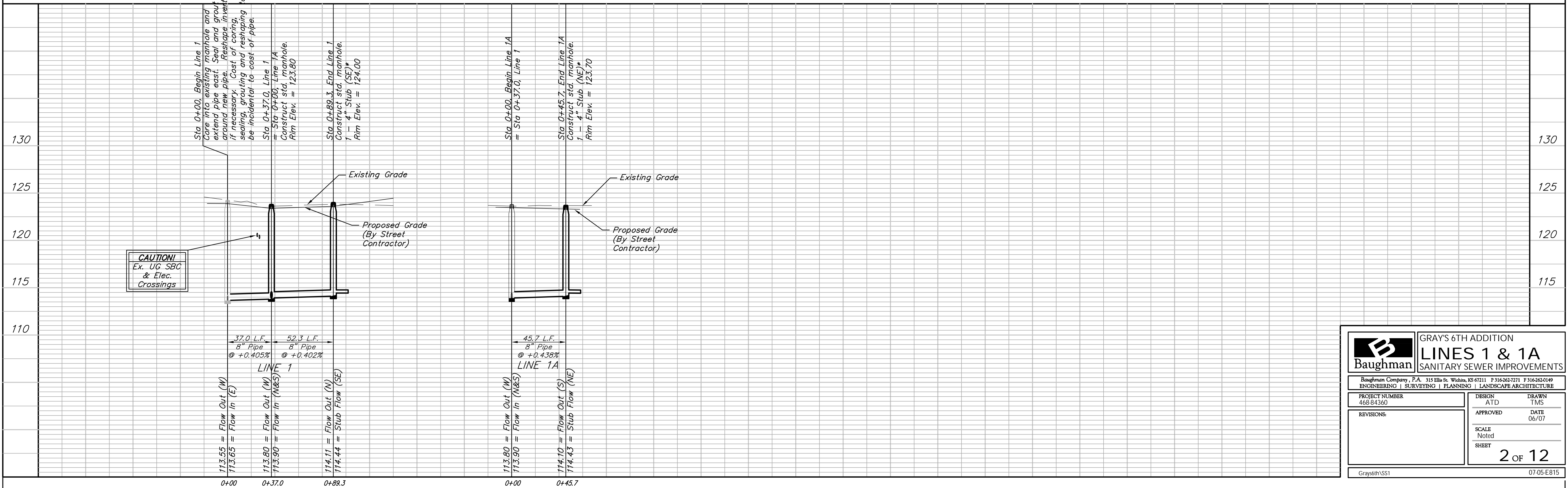
BENCHMARK:
CITY OF WICHITA BENCHMARK DISK -
NORTHEAST CORNER OF INTERSECTION
OF 47TH STREET SOUTH & HOOVER RD.
21.60' NORTH OF CENTERLINE
71.50' EAST OF CENTERLINE
73.60 FEET EAST NORTHEAST OF
SECTION COR.
5.90' WEST OF POWER POLE
ELEV. = 1290.46 NGVD29



Distance from Upstream MH	Downstream MH	NUMBER	TYPE	LOCATION				FOR INFORMATION ONLY	
				LOT NO.	BLOCK NO.	LINE NO.	STATION \ DIRECTION	APPROXIMATE LENGTH 4" PIPE VERTICAL	HORIZONTAL
187'	40'	1	8" X 4" Tee	5	B	-	Lt.	7.0'	24.5'
60'	173'	2	8" X 4" Tee	4	B	-	Lt.	7.0'	25'
198'	28'	3	8" X 4" Tee	3	B	-	Lt.	6.0'	25'
105.2'	120'	4	8" X 4" Tee	3	B	-	Lt.	6.0'	25.2'
19.4'	209'	5	8" X 4" Tee	1	B	-	Lt.	5.0'	25.6'



Note: Risers added to existing Lateral 318, SWI
(located in Book N, Page 204)



Baughman		GRAY'S 6TH ADDITION LINES 1 & 1A SANITARY SEWER IMPROVEMENTS	
Baughman Company, P.A. 315 Ellis St. Wichita, KS 67211 F 3162627211 F 3162620149 ENGINEERING SURVEYING PLANNING LANDSCAPE ARCHITECTURE			
PROJECT NUMBER 468-84360	DESIGN ATD	DRAWN TMS	
REVISIONS:	APPROVED	DATE 06/07	
	SCALE Noted	SHEET	
		2 OF 12	
Gray6thSS1		07-05-E815	