



PLAN AND PROFILE OF PROPOSED

**21st STREET NORTH IMPROVEMENTS
FROM OLIVER TO WOODLAWN**

FEDERAL AID PROJECT

WICHITA, SEDGWICK COUNTY, KANSAS
POPULATION = 335,562
CITY OF WICHITA PROJECT NO. 472-84235
CITY OF WICHITA O.C.A. NO. 706923

INDEX OF SHEETS

SHEET NO	DESCRIPTION
1	TITLE SHEET
2	GENERAL NOTES
3-4	TYPICAL SECTIONS
5-11	PLAN SHEETS
12-16	STORM SEWER PLAN AND PROFILE
17-23	PAVING DETAILS
24-34	INLET AND MANHOLE DETAILS
35-36	SCHEDULE OF INLETS AND MANHOLES
37-42	ROB DETAILS
43-44	SANITARY SEWER PLAN AND PROFILE
45	MISCELLANEOUS DETAILS
46	SUMMARY OF QUANTITIES
47-54	SOIL EROSION BMP
55	SEEDING
56-58	PAVEMENT MARKING PLAN
58-60	SIGNING PLAN
61-62	SIGNING DETAILS
63	CONSTRUCTION SEQUENCE SUMMARY
64-72	TRAFFIC CONTROL
73-74	DRAINAGE DATA SHEET
75-96	CROSS SECTIONS

Sta. 23+64.15 BEGIN
Proj. 87 N-0190-01

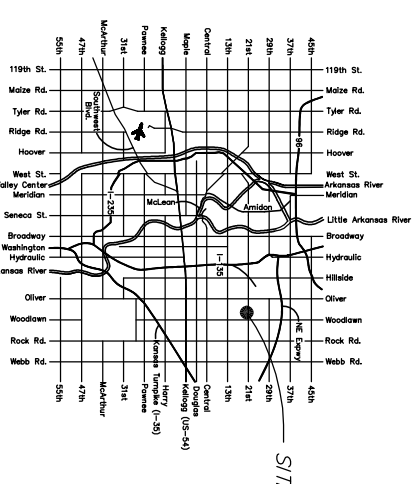
SW 1/4, SEC. 1

SE 1/4, SEC. 1

SCALE: 1"=200'

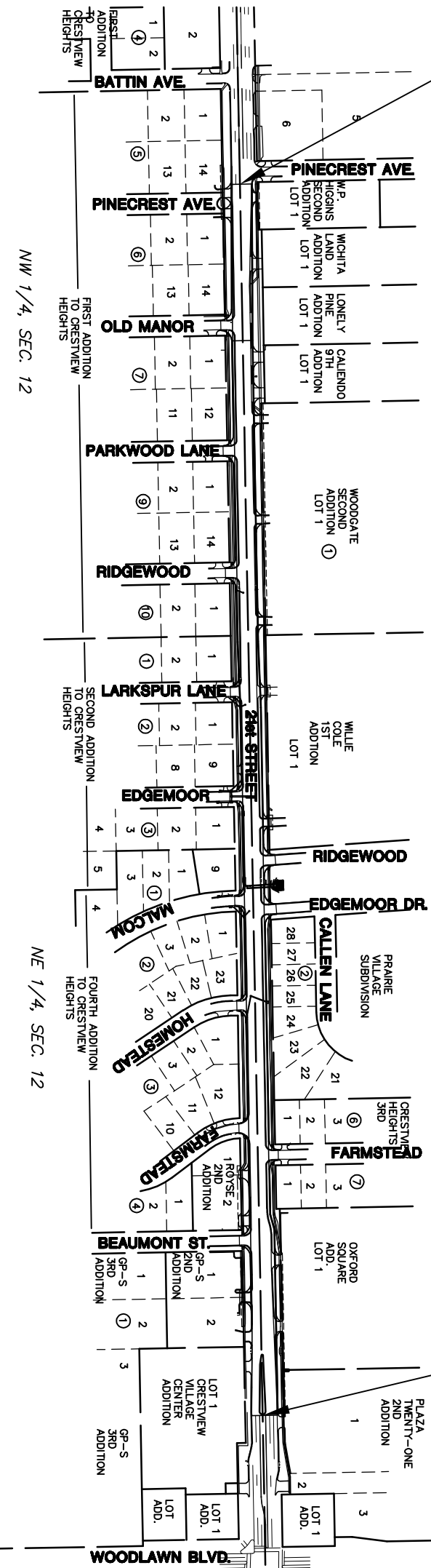
Sta. 58+92.50 END
Proj. 87 N-0190-01

LOCATION MAP

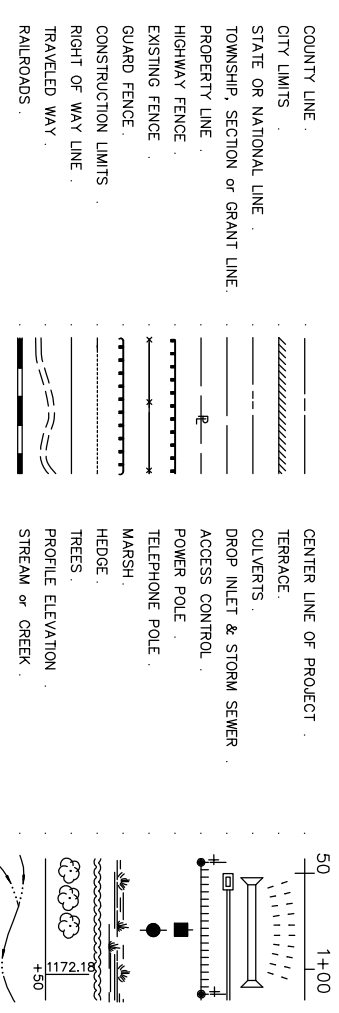


DESIGN DESIGNATION

AADT (2002)	=	25,892
AADT (2030)	=	31,000
DHV	=	10 %
D	=	60 %
T	=	3 %
V	=	40 M.P.H.
Control of Access	=	NONE
Clear Zone	=	6 FT.



CONVENTIONAL SIGNS



DESCRIPTION	LENGTH (FT.)
GROSS LENGTH OF PROJECT	3,528.35
EXCEPTIONS	0.00
ADDITIONS	0.00
NET LENGTH OF PROJECT	3,528.35
NET LENGTH OF BRIDGES	0.00
NET LENGTH OF ROAD	3,528.35

NOTE:
TWO WAY TRAFFIC TO BE CARRIED THROUGH CONSTRUCTION. LOCAL TRAFFIC WILL BE PERMITTED TO ADJACENT PROPERTIES.

PREPARED & SUBMITTED BY
MK&C ENGINEERING CONSULTANTS, INC.
WICHITA, KANSAS

APPROVED - DATE
JIM ARMOUR, P.E.
CITY ENGINEER
PROJECT NO. 87 N-0190-01

STATE	PROJECT NO.	YEAR	SHEET NO.	TOTAL SHEETS
KANSAS	87 N-0190-01	2005	1	96

KDOT PROJ. NO. 87 N-0190-01
F.A. NO. STP N019 (001)

MILL AND OVERLAY
GRADING AND SURFACING
STORM SEWER
PAVEMENT MARKING
SEEDING
REINFORCED CONCRETE BOX CULVERT