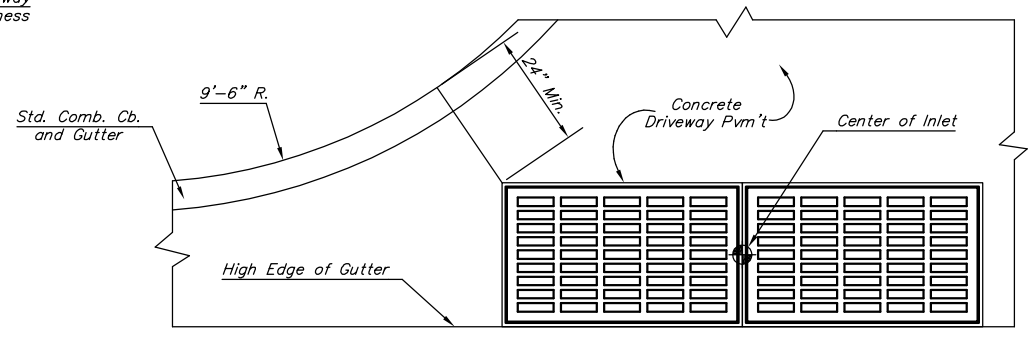


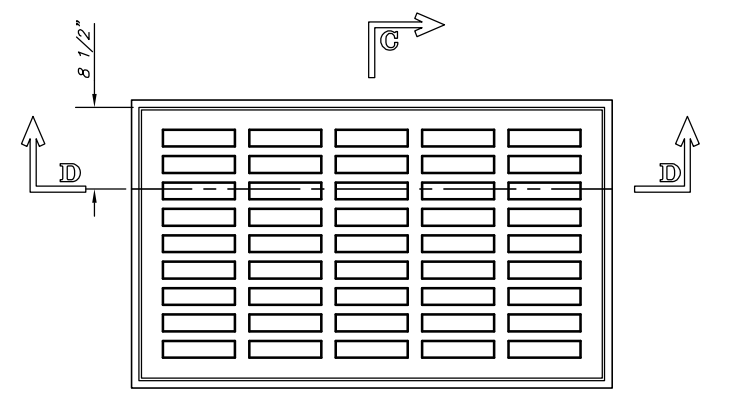
SECTION B-B



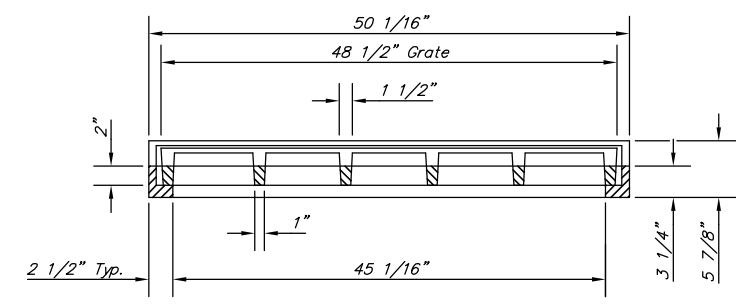
PLAN

GENERAL NOTES

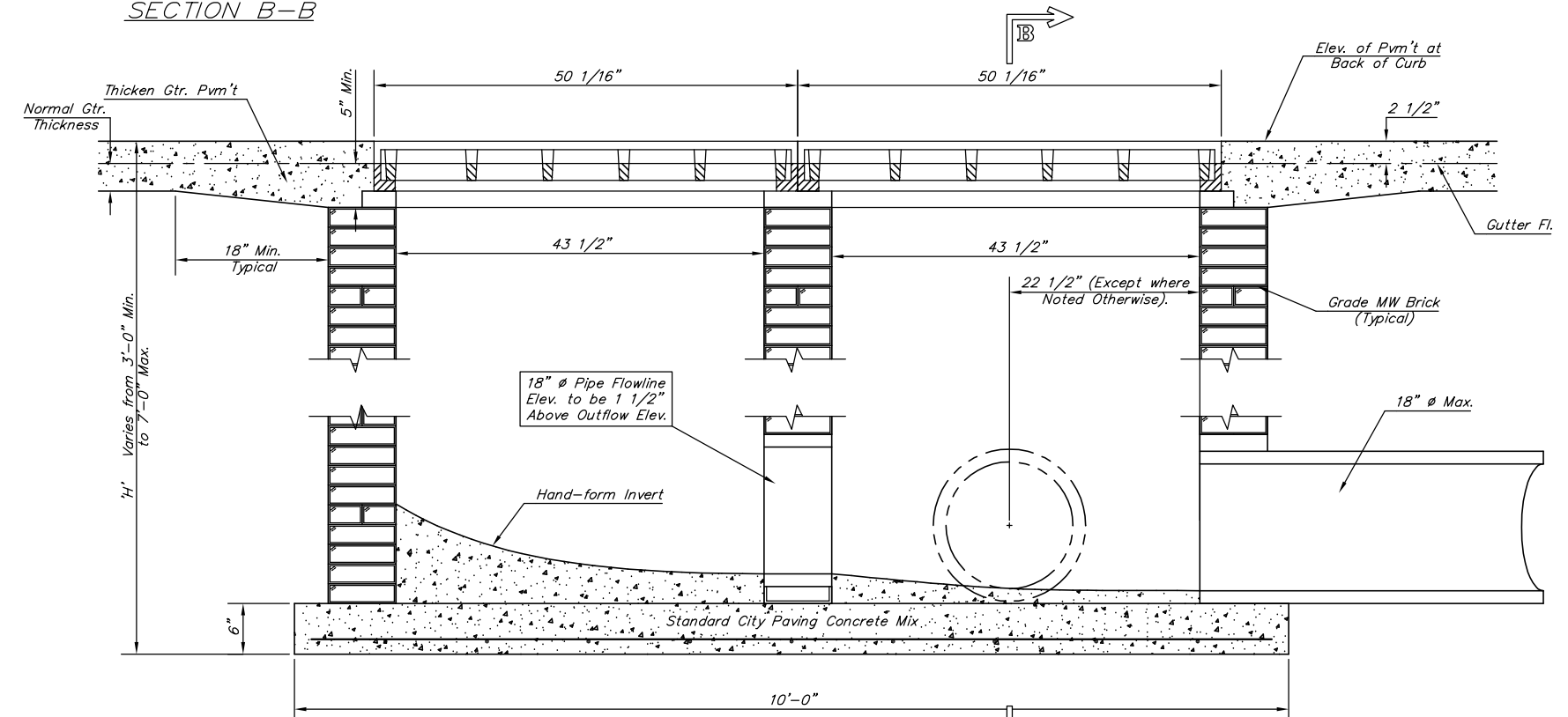
1. Grate frames to be installed on thin mortar cushion to insure full support along brick walls. Concrete used for inlet construction shall be concrete pavement mix.
2. Inlet invert shall be shaped with 8 sack sand mix concrete to create flow channels and to increase hydraulic efficiency such that the inlet will be self cleaning between all inlet and/or outlet pipes.
3. The ends of all pipes installed in inlets shall be cut off flush with the inside face of the inlet wall.
4. Inlet Frames and Grates to be two (2) Deeter #2095 or approved equal.



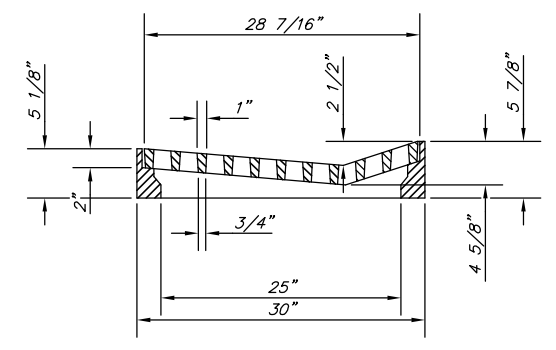
PLAN



SECTION D-D



SECTION A-A



SECTION C-C

DEETER #2095 FRAME & GRATE  
TOTAL WEIGHT: 705 lbs.  
(2 Each Required)

J:\Civil\05709\dwg\details\057090Grate.dwg 01/29/2007 10:59:44 AM CST

KANSAS DEPARTMENT OF TRANSPORTATION			
DRIVEWAY GRATED INLET DOUBLE			
PROJECT NO.		SEDGWICK CO.	
M K E C ENGINEERING CONSULTANTS, INC.			
WICHITA, KANSAS			
DESIGNED BY: JRA	CHECKED BY: JRA		
DRAWN BY: WNJ	DATE: DEC. 2005	SHEET 21 OF 68	