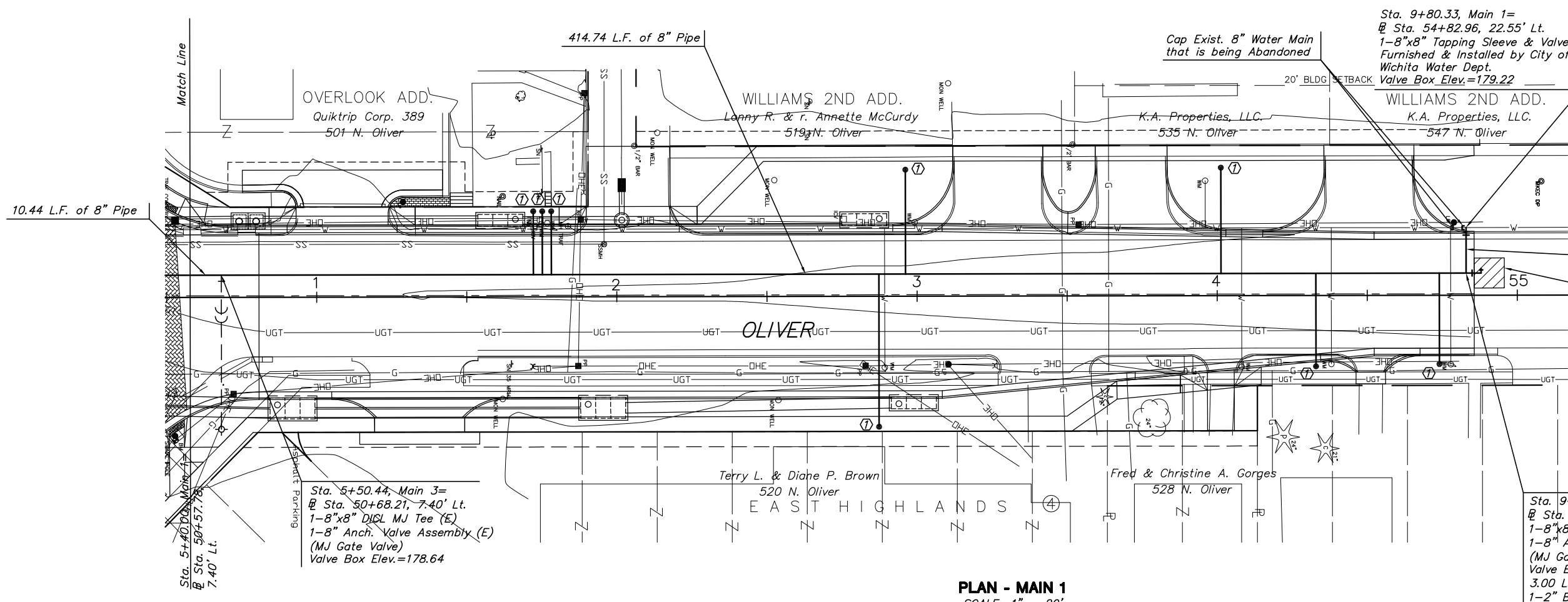


CENTRAL AND OLIVER INTERSECTION  
WATER MAIN PLANS  
LINE 1



① Replace existing meter box and setter with a 1" long or short service as required. New service line to be connected to the new 8" main in Oliver. Setter to be connected to existing customer's water service. City of Wichita will shut off water service and remove existing meter, vault, lid and setter. The contractor shall coordinate this work.  
3 Long Service Lines  
5 Short Service Lines

Remove and Replace 11.0 S.Y. of Pavement to Match Existing. See Perm. Patch Detail on Sht. 2

PLAN - MAIN 1  
SCALE: 1" = 20'

PROFILE - MAIN 1  
HORIZONTAL SCALE: 1" = 20'  
VERTICAL SCALE: 1" = 5'

