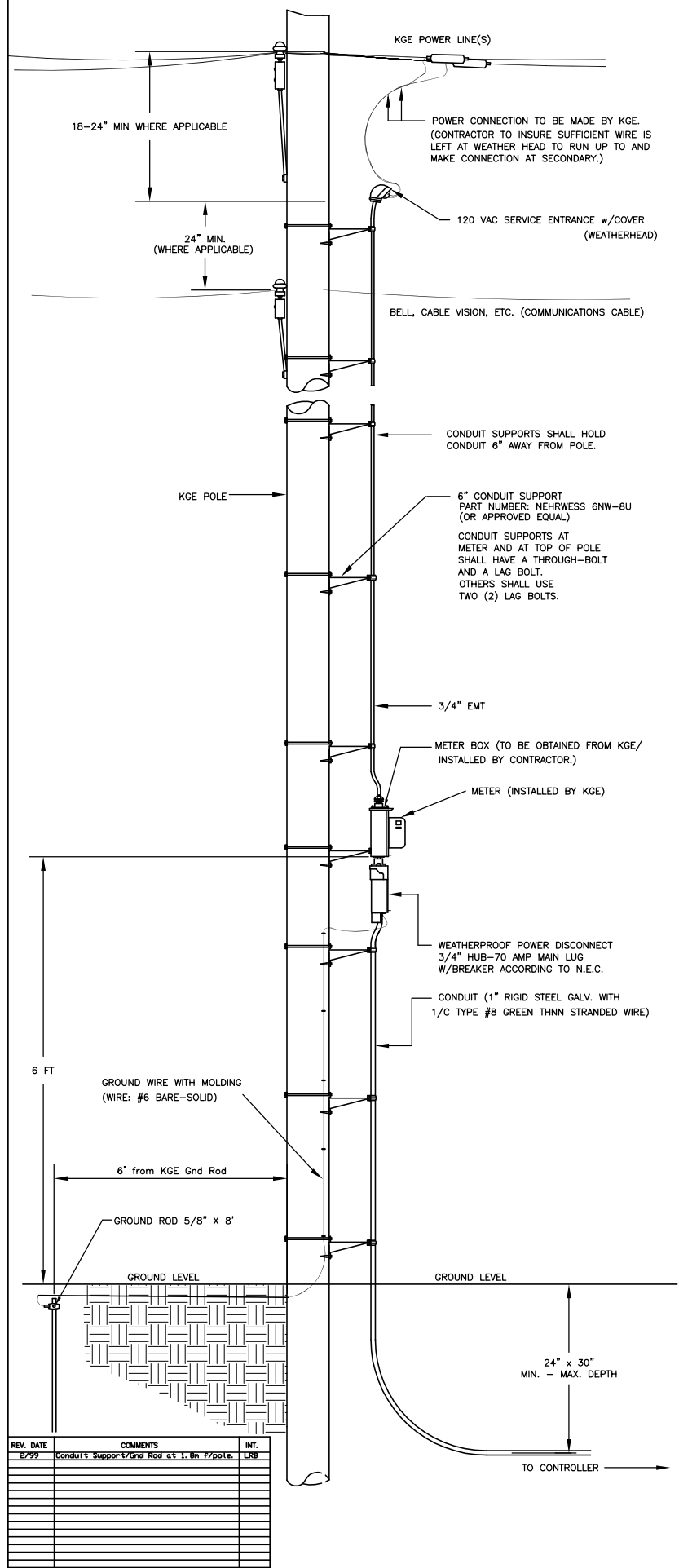
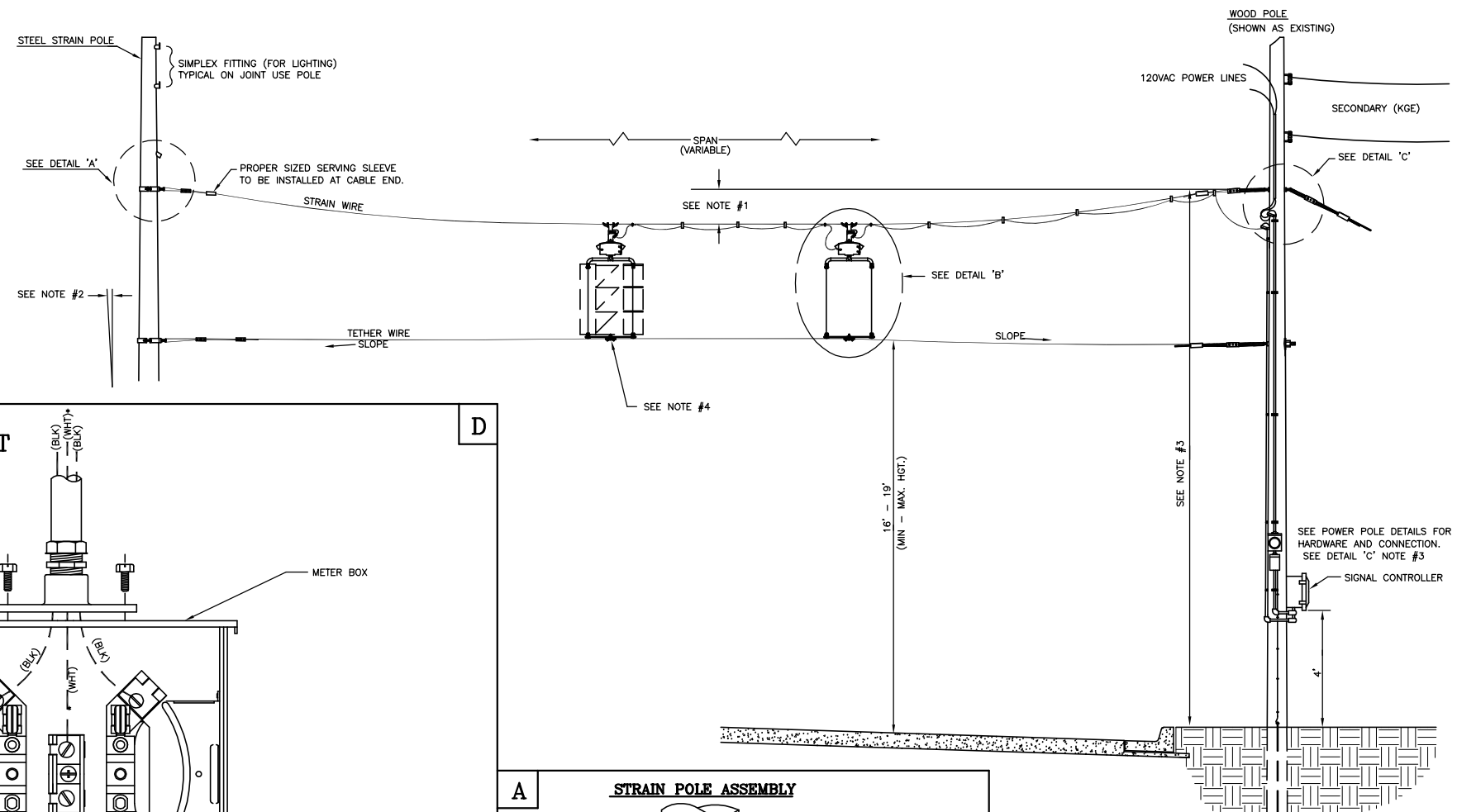


POWER POLE DETAILS



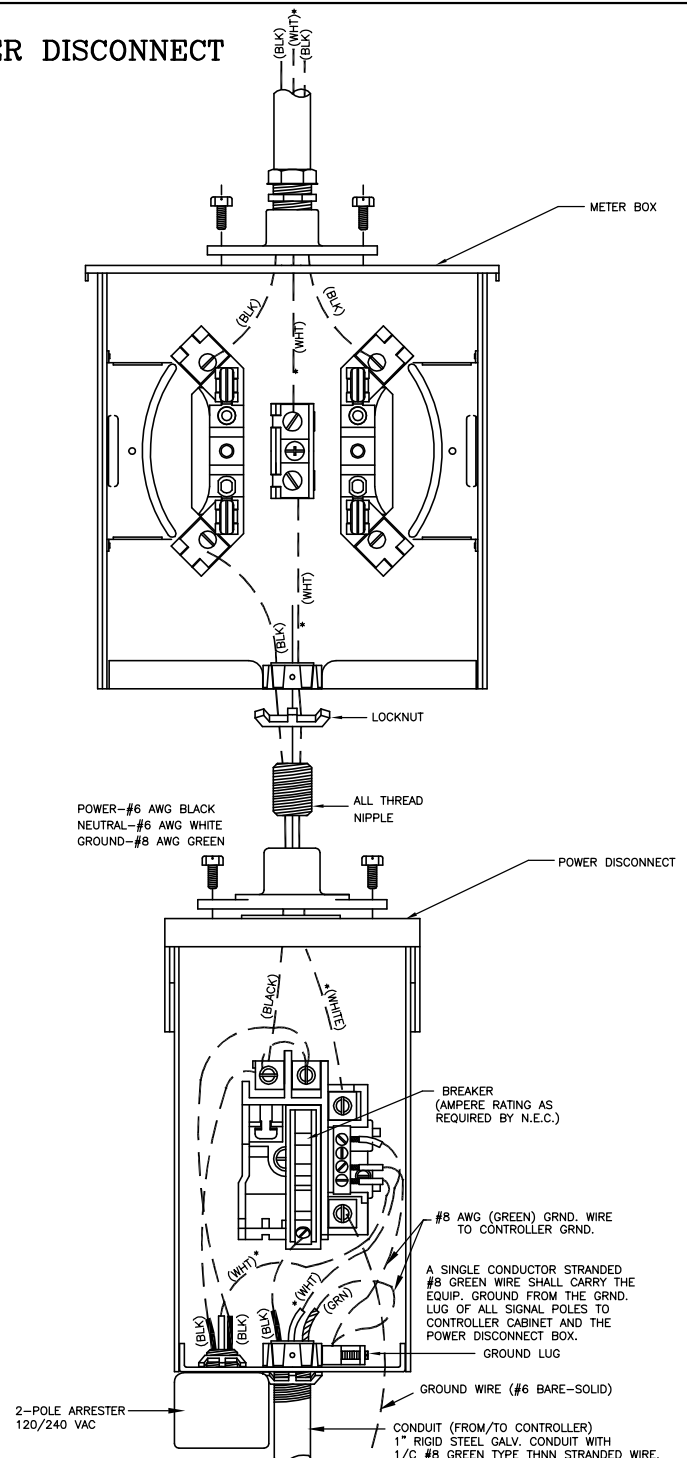
SPANWIRE ASSEMBLY DETAILS

- MAX. SAG = 5% OF SPAN.
- STANDARD BACKRAKE = 1.5'
- HEIGHT OF STRAIN WIRE HOOK-UP TO BE DETERMINED BY FIELD ENGINEER. TRAFFIC SIGNAL CABLE TO BE SECURED TO STRAIN (SPAN) WIRE WEATHERABLE NYLON CABLE HANGERS (12" CTR.) DETAIL 'B'
- TETHER CLAMP TO BE DESIGNED TO RELEASE UNDER 'HIGH WIND LOAD' TO PERMIT SIGNAL 'FREE SWING'.

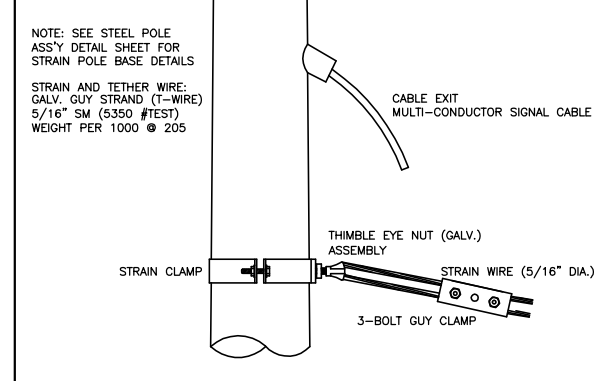


METER BOX & POWER DISCONNECT DETAILS

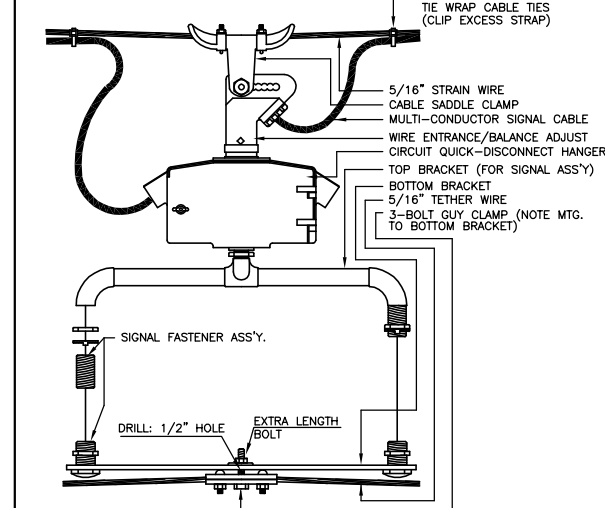
NOTE:
• TO BE MARKED WITH WHITE TAPE



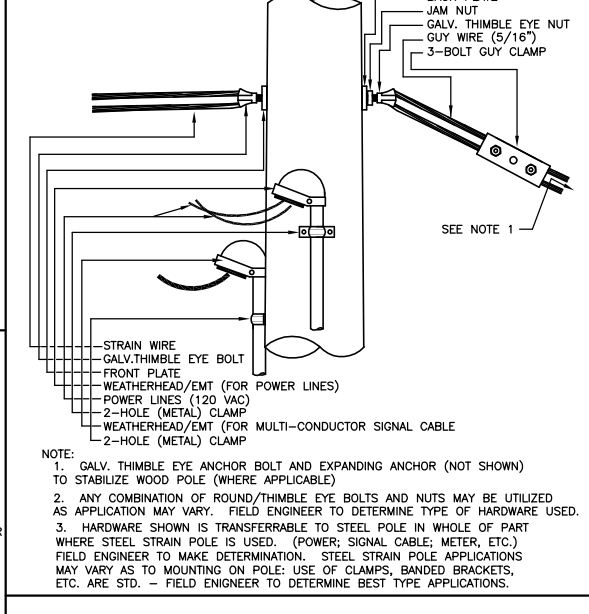
A STRAIN POLE ASSEMBLY



B SIGNAL BRACKET ASSEMBLY DETAILS



C WOOD POLE ASSEMBLY DETAILS KGE POLE EXCLUDED



J:\Civil\05709\dwg\details\PPSP-DTL.dwg 12/02/2005 02:44:28 PM CST

PROJECT DESCRIPTION

POWER POLE AND SPAN POLE ASSEMBLY DETAILS

PROJECT NUMBER
472-84362

DRAWN BY: T.M.	APPROVED BY:	REVISED BY: L. B.
DATE: FEB. 96		DATE: 2/26/99

CITY OF WICHITA
DEPARTMENT OF PUBLIC WORKS

DIVISION OF TRAFFIC ENGINEERING

PAUL GUNZELMAN, P.E. TRAFFIC ENGINEER

SCALE
NO SCALE

47 / 68
SHEET / OF