

# REGENCY LAKES COMMERCIAL 2ND ADDITION

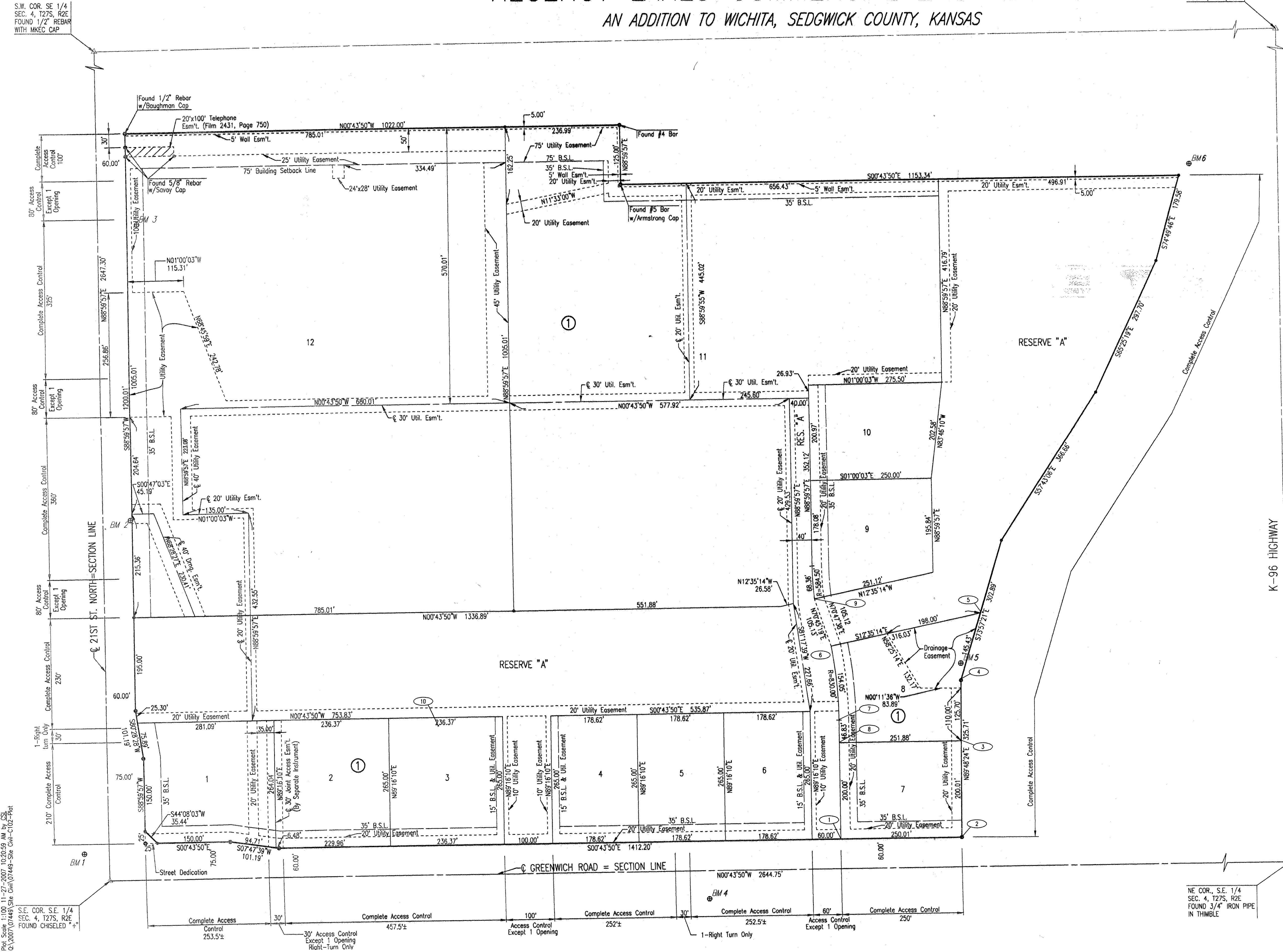
## AN ADDITION TO WICHITA, SEDGWICK COUNTY, KANSAS

N.W. COR. S.E. 1/4  
SEC. 4, T27S, R2E

**F&B**

SCALE: 1"=100'

- = FOUND #5 BAR W/KECC CAP (UNLESS OTHERWISE NOTED)
- = SET 1/2" REBAR W/ PEC CAP (UNLESS OTHERWISE NOTED)



COORDINATE LIST		
POINT	NORTH	EAST
1	51,511.0303	49,920.7277
2	51,761.0119	49,917.5400
3	51,760.3368	49,717.5331
4	51,759.9126	49,591.8327
5	51,800.1050	49,452.0720
6	51,491.6755	49,520.9426
7	51,507.8832	49,673.9200
8	51,508.4803	49,720.7446
9	51,457.0255	49,421.6902
10	50,677.9507	49,684.5027

① = COORDINATE POINT NO.

S.W. COR. SE 1/4  
SEC. 4, T27S, R2E  
FOUND 1/2" REBAR  
WITH MKCC CAP

NE COR. S.E. 1/4  
SEC. 4, T27S, R2E  
FOUND 3/4" IRON PIPE  
IN THIMBLE

DATE	REVISIONS ITEM	NO.	PRINTS ISSUED	
			DATE	PURPOSE
11-01-07				
11-21-07				
			FOR PERMIT	3
			City of Wichita Private Plans	3

**BROWNING & ASSOCIATES**  
ARCHITECTURE

1305 E. WATERMAN, SUITE - B  
WICHITA, KANSAS 67211  
TEL 1-316-269-9001 FAX 1-316-269-9005

*Hampton Inn & Suites*

100 ROOM HOTEL

LOTS 7 & 8, BLOCK 1  
REGENCY LAKES  
COMMERCIAL 2ND  
WICHITA, KANSAS

PROJECT NO. 0702-296-472

DRAWN	CHECKED

SHEET TITLE  
**PLAT**

SHEET NUMBER  
**C-102**

OF \_\_\_\_\_ SHEETS

COPYRIGHT 2007 JAMES L. BROWNING, ARCHITECT. ALL RIGHTS RESERVED.