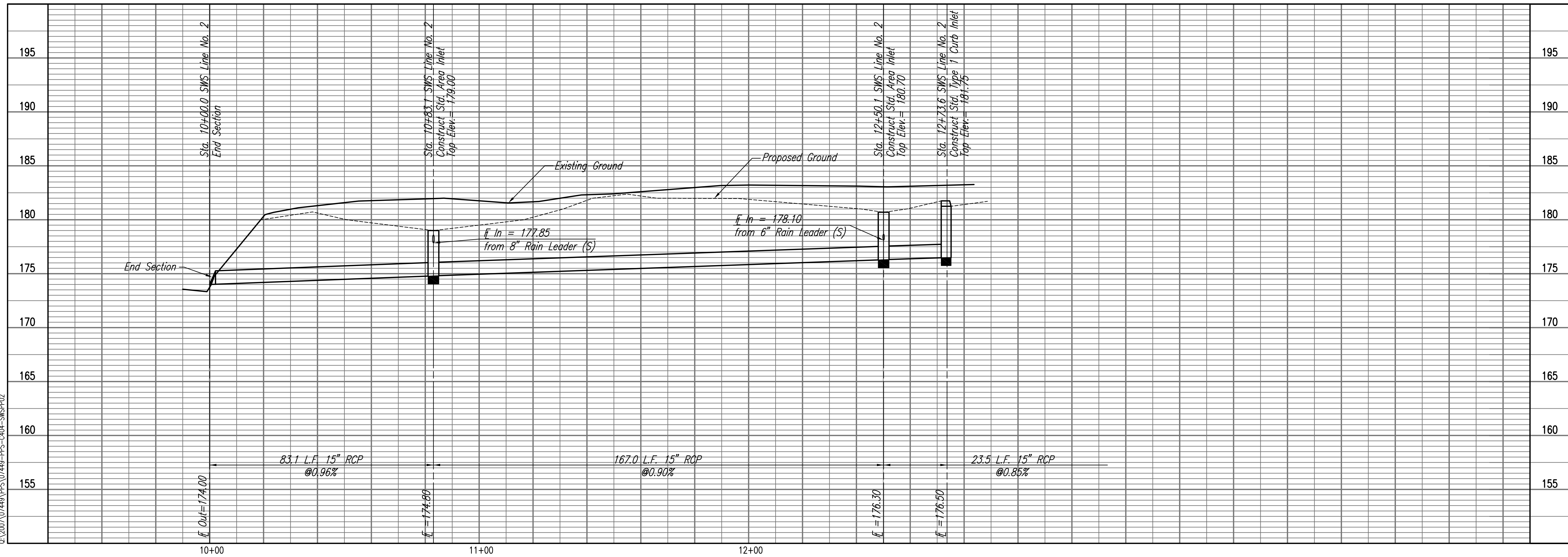


STORM WATER SEWER LINE NO. 2



PRINTS ISSUED	
NO.	PURPOSE
3	FOR PERMIT
3	City of Wichita Private Plans

REVISIONS	
DATE	ITEM
11-01-01	
11-21-01	

BROWNING & ASSOCIATES
ARCHITECTURE

1305 E. WATERMAN, SUITE - B
WICHITA, KANSAS 67211
TEL. 1-316-269-9001 FAX 1-316-269-9005

Hampton Inn & Suites

100 ROOM HOTEL

LOTS 7 & 8, BLOCK 1
REGENCY LAKES
COMMERCIAL 2ND
WICHITA, KANSAS

PROJECT NO. 0702-296-472

DRAWN	CHECKED
C&L	DK
SHEET TITLE	
STORM WATER SEWER LINE PLAN/PROFILE	
SHEET NUMBER	
C-404	
OF _____ SHEETS	

Saved 11-27-2007 8:34:36 AM by CSL
Proj. Scale: 1"=20'-0"
C:\2007\071449\PS\071449-PPS-C404-SWP202.dwg

Professional Engineering Consultants, P.A.
803 S. TORRENS, WICHITA, KANSAS 67202 • 316 262 2091
www.pac1.com • dan.guerr@pac1.com

COPYRIGHT 2007 JAMES L. BROWNING, ARCHITECT. ALL RIGHTS RESERVED

CITY OF WICHITA PRIVATE PROJECT NO. 1832 PPS (607861)