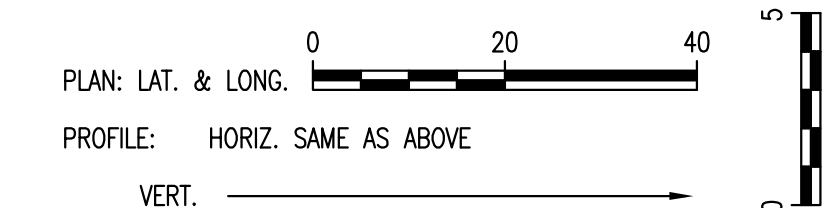


SCALE:



N: 51,715.9012, E: 49,924.1380  
FS 1, Sta. 0+00.00  
Existing 16" Water Main \*  
1- 16" x 8" Tapping Sleeve  
1- 8" Tapping Valve  
1- 6" Valve Box  
(To be furnished and set by City of Wichita Water Dept.)  
Top Valve Box El.= 183.0  
Contractor shall reimburse the City of Wichita for this work.

N: 51,715.9617, E: 49,903.0418  
FS 1, Sta. 0+21.10  
1- 8" x 8" CI CL MJ Tee  
1- 8" Valve Assembly (S)  
(MJ Gate Valve)  
Top Valve Box El.= 182.0  
1- 8" x 4" PE x PE Reducer (W)  
1- 4" Anchored Valve Assembly (Special) (W)  
(MJ Gate Valve)  
Top Valve Box El.= 181.9  
See sheet no. C.303 for 4" continuation.

N: 51,708.7606, E: 49,903.0212  
FS 1, Sta. 0+28.30  
1- 8" CI CL MJ 90° Bend  
Defl.= 89°32'56"

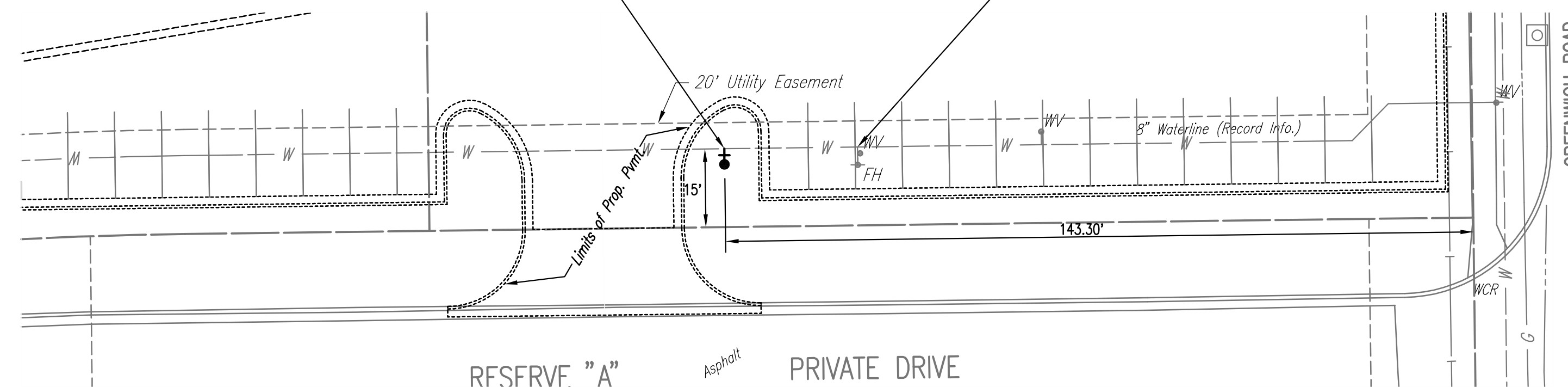
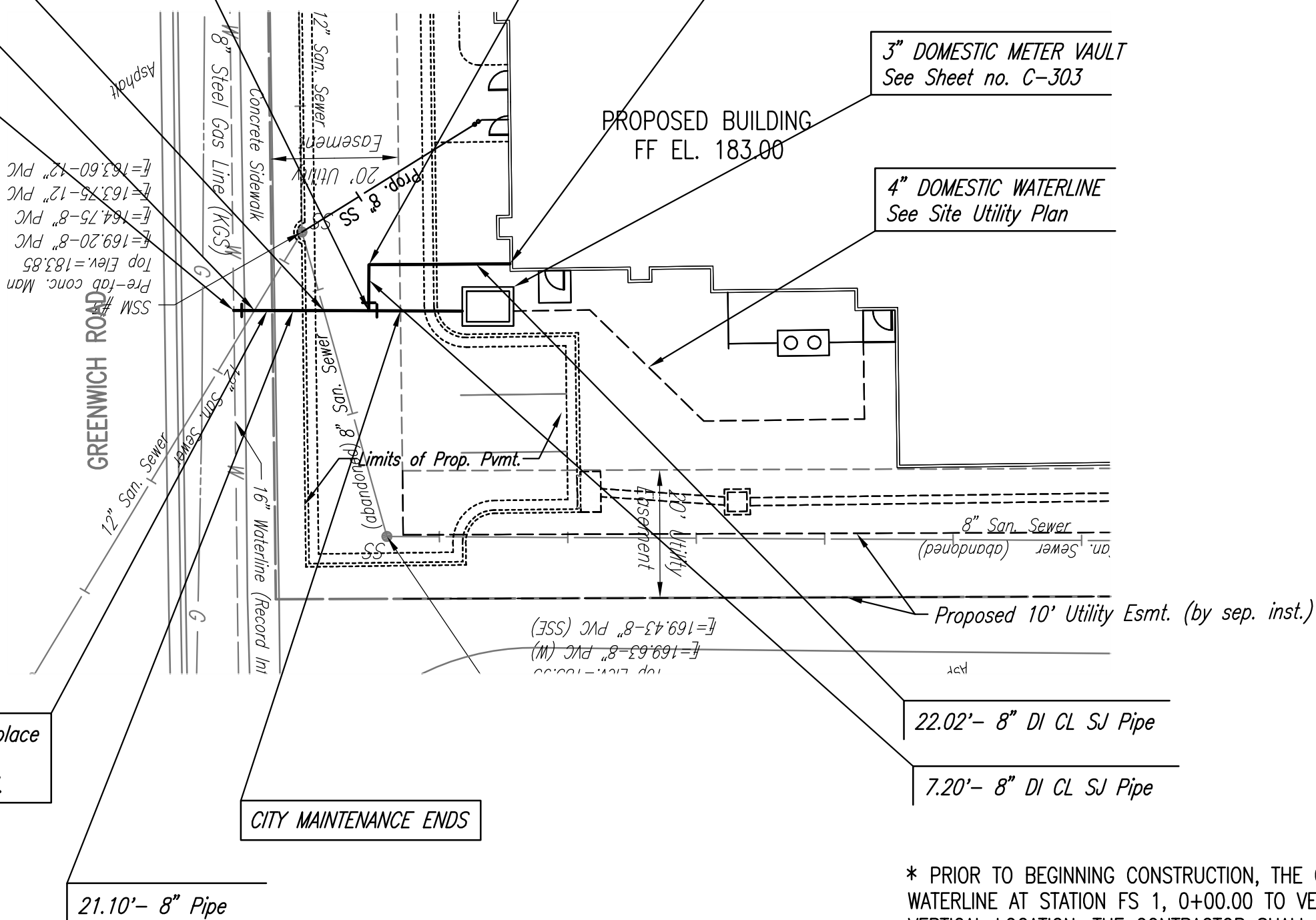
N: 51,708.6503, E: 49,881.0027  
FS 1, Sta. 0+50.32  
See Mechanical Plan for Fire Line Entrance Details, Fire Service Continuation and Backflow Preventor.

N: 51,524.5272, E: 49,802.7516  
Exist. WL 1, Sta. 1+04.23  
Existing 8" Water Main \*\*  
1- 8" x 6" Tapping Sleeve  
1- 6" Tapping Valve  
1- 6" Valve Box  
(To be furnished and set by City of Wichita Water Dept.)  
Top Valve Box El.= 181.3  
Contractor shall reimburse the City of Wichita for this work.  
Install Relocated Fire Hydrant from N-51,524.5272, E-49,802.7516  
FH Bury Line El.= 181.3  
Barrel extensions shall be installed as required.

N: 51,524.2021, E: 49,777.2537  
Exist. WL 1, Sta. 1+29.73  
Relocate Existing Fire Hydrant to N-51,524.5272, E-49,802.7516.  
Close Fire Hydrant Valve and install 1- 6" CI MJ Plug and thrust blocking.  
Remove Valve Box and Salvage to City.

CAUTION !!!  
Existing 12" Sanitary Sewer

CAUTION !!!  
Existing 8" Sanitary Sewer



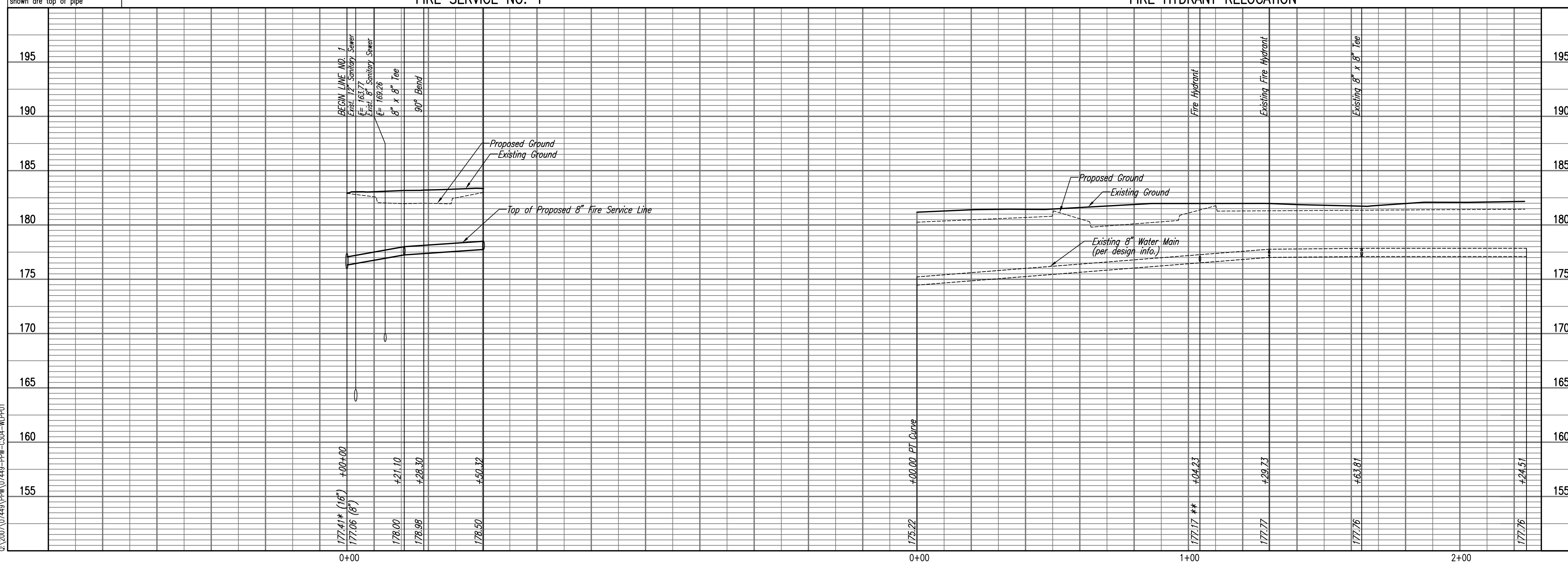
\* PRIOR TO BEGINNING CONSTRUCTION, THE CONTRACTOR SHALL EXCAVATE THE EXISTING 16" WATERLINE AT STATION FS 1, 0+00.00 TO VERIFY PIPE SIZE, TYPE, FITTINGS, AND HORIZONTAL AND VERTICAL LOCATION. THE CONTRACTOR SHALL REPORT HIS FINDINGS TO THE ENGINEER SO THAT ANY NECESSARY PLAN MODIFICATIONS CAN BE MADE. ANY ADDITIONAL LABOR OR MATERIALS NECESSARY TO COMPLETE THE CONNECTION SHALL BE CONSIDERED SUBSIDIARY TO THE PROJECT.

\*\* PRIOR TO BEGINNING CONSTRUCTION, THE CONTRACTOR SHALL EXCAVATE THE EXISTING 8" WATERLINE AT STATION EXIST. WL 1 0+04.23 TO VERIFY PIPE SIZE, TYPE, FITTINGS, AND HORIZONTAL AND VERTICAL LOCATION. THE CONTRACTOR SHALL REPORT HIS FINDINGS TO THE ENGINEER SO THAT ANY NECESSARY PLAN MODIFICATIONS CAN BE MADE. ANY ADDITIONAL LABOR OR MATERIALS NECESSARY TO COMPLETE THE CONNECTION SHALL BE CONSIDERED SUBSIDIARY TO THE PROJECT.

Unless noted otherwise, elevations shown are top of pipe

FIRE SERVICE NO. 1

FIRE HYDRANT RELOCATION



PRIVATE PROJECT NO. 1366 PPW (607853)

PRINTS ISSUED	
NO.	PURPOSE
3	FOR PERMIT
3	City of Wichita Private Plans

REVISIONS	
DATE	ITEM

**BROWNING & ASSOCIATES**  
ARCHITECTURE  
1305 E. WATERMAN, SUITE - B  
WICHITA, KANSAS 67211  
TEL 1-316-269-9001 FAX 1-316-269-9005

**Hampton Inn & Suites**  
100 ROOM HOTEL  
LOTS 7 & 8, BLOCK 1  
REGENCY LAKES  
COMMERCIAL 2ND  
WICHITA, KANSAS  
PROJECT NO. 0702-296-472

DRAWN	CHECKED
CEL	IDK
SHEET TITLE <b>FIRE SERVICE LINE PLAN/PROFILE</b>	
SHEET NUMBER <b>C-304</b>	
OF _____ SHEETS	

Professional Engineering Consultants, P.A.  
803 S. TORREYS, WICHITA, KANSAS 67202 - 316 262 2091  
www.pac1.com • dave.gerner@pac1.com  
COPYRIGHT 2007 JAMES L. BROWNING, ARCHITECT. ALL RIGHTS RESERVED

Saved 12-13-2007 9:11:32 AM by BJT  
Proj. Scale: 1"=50'-0"  
2/20/07 07:49 PM 0749-PPW-C304-APP01