

**SANITARY SEWER PLANS FOR
SALVATION ARMY
HIAWATHA CAMPUS**



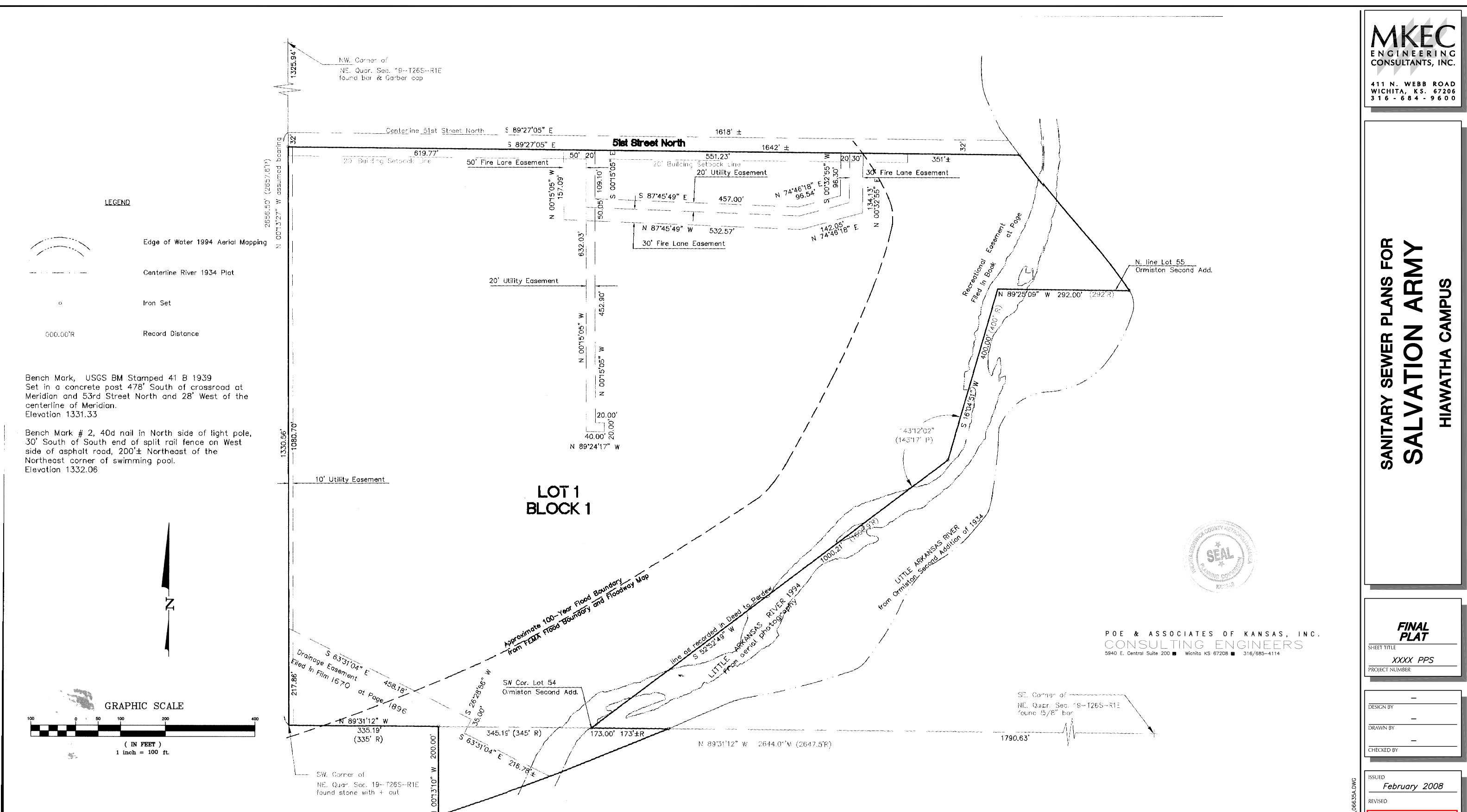
POE & ASSOCIATES OF KANSAS, INC.
CONSULTING ENGINEERS
5940 E. Central Suite 200 ■ Wichita KS 67208 ■ 316/685-4114

**FINAL
PLAT**
SHEET TITLE
XXXX PPS
PROJECT NUMBER

DESIGN BY
DRAWN BY
CHECKED BY

ISSUED
February 2008
REVISED
As Built: 5-15-08

SHEET NO.
9 of 9

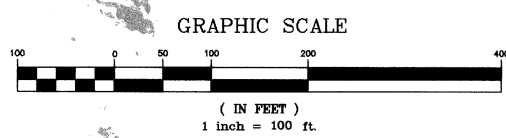


LEGEND

- Edge of Water 1994 Aerial Mapping
- Centerline River 1934 Plat
- Iron Set
- Record Distance

Bench Mark, USGS BM Stamped 41 B 1939
Set in a concrete post 478' South of crossroad at
Meridian and 53rd Street North and 28' West of the
centerline of Meridian.
Elevation 1331.33

Bench Mark # 2, 40d nail in North side of light pole,
30' South of South end of split rail fence on West
side of asphalt road, 200'± Northeast of the
Northeast corner of swimming pool.
Elevation 1332.06



CAMP HIAWATHA ADDITION TO WICHITA, SEDGWICK COUNTY, KANSAS

PLOTED: Friday, March 28, 2008 @ 11:30AM

J:\CIVIL\06635\DWG\SAN\PHASE 2\06635A.DWG