

STREET PAVING FOR GRAND MERE COURT

to serve

BELLE TERRE SOUTH 2ND ADDITION

Grand Mere Court, adjacent to Lots 9, 10, 11 & 12, Block 1

CITY OF WICHITA, KANSAS

James L. Armour, P.E. City Engineer

Project Number

472-84502

O.C.A. Number

766135

GENERAL NOTES:

1. Contractor will be required to provide notice to utility companies a minimum of forty-eight (48) hours prior to any excavation, as follows:

Kansas One-Call 687-2470

The Contractor must notify the following in case of an emergency:

Cox Communications 262-4270
 Kansas Gas Service 1-888-482-4950
 Westar Energy 383-8650
 Aquila Energy 1-800-303-0357
 SBC 268-2246
 City of Wichita Water Dept. 268-4963
 City of Wichita Sewer Maint. 268-4024
 City of Wichita Storm Sewer Maint. 268-4020
 City of Wichita Traffic Maint. 268-4034
 Conoco Phillips Pipeline 1-877-267-2290
 Southern Star Pipeline 529-6600
 Kinder Morgan Pipeline 1-888-844-5658

2. Utility service lines, poles, valve boxes, meters, and etcetera are to be adjusted as necessary by others prior to construction unless the plans specifically call for their adjustment by the Contractor or unless the plans specifically identify a utility to be adjusted by its owner during construction. Existing utilities and their location, as shown on the plans, represent the best information obtainable for design. The contractor will be required to work around existing utilities within the right-of-way which do not conflict with proposed construction.

3. Rubble from the removal of miscellaneous structures and excess excavation which is to be wasted shall be disposed of on sites to be provided by the Contractor. These sites shall be approved by the Engineer as to suitability, appearance and site location. Locations that, in the opinion of the Engineer, will leave an unsightly appearance will not be approved. All disposal sites must be approved by the Kansas Department of Health and Environment. Material either stockpiled or disposed of in a flood plain would a Kansas State Board of Agriculture permit. Any material dumped in waters of the United States or wetlands is subject to U.S. Corps. of Engineers permitting regulations. Any material buried or stockpiled beyond approved construction limits would require additional archaeological investigations unless buried in a previously approved borrow location.

4. Trees and shrubs in public right-of-way which are in direct conflict with proposed new construction shall be removed by the Contractor with the Engineer's approval. Trees and shrubs which are not in direct conflict with proposed new construction shall be saved and protected from damage.

5. Limits of earthwork shall match existing ground elevations at the right-of-way line unless otherwise noted on the plans with a new finished grade elevation. When a new finished grade elevation is shown, the earthwork shall extend one foot beyond the right-of-way line and then sloped up or down using permissible slopes to match the existing ground surface.

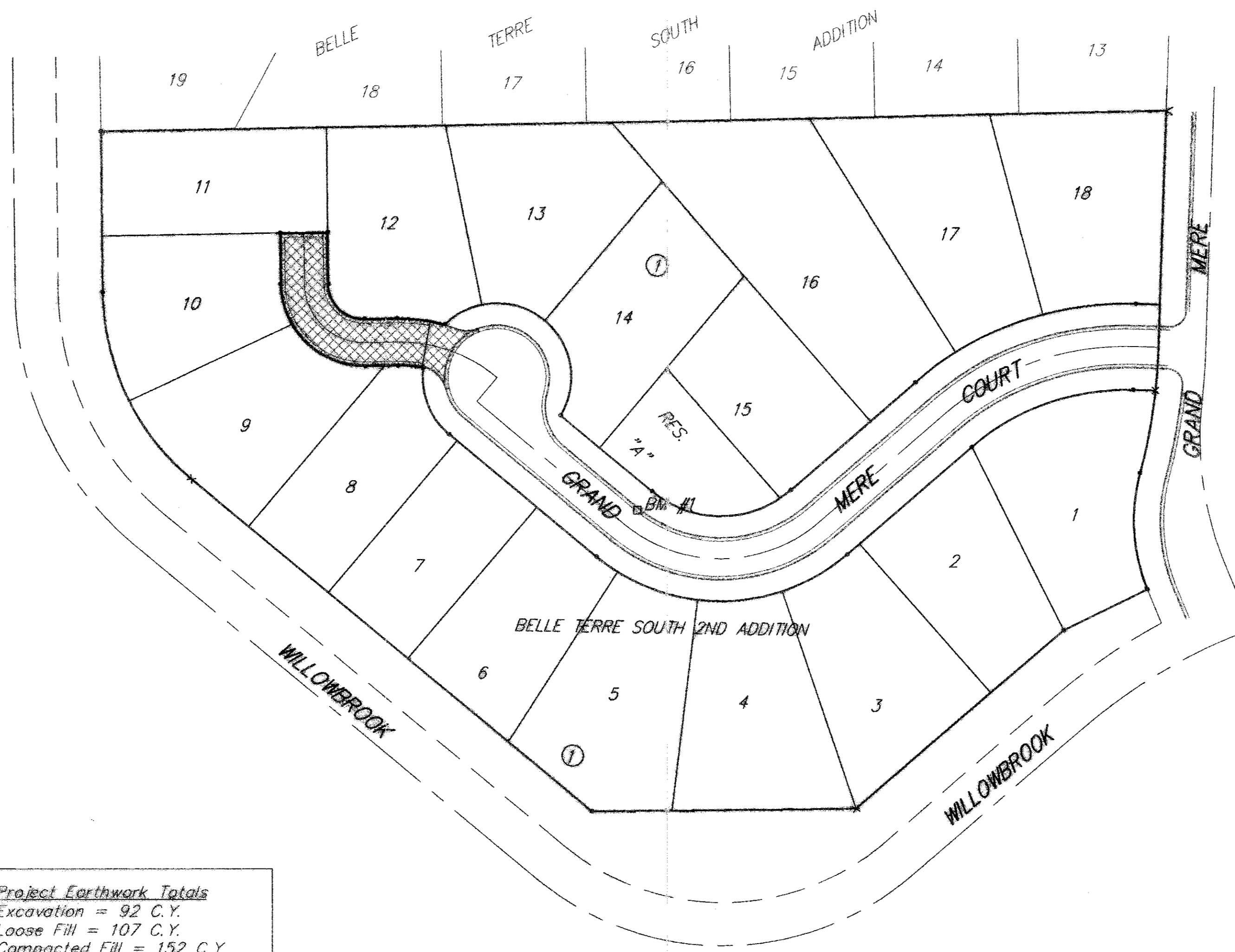
6. The Water Department shall field located water valves one time during construction when requested by Contractor. It shall be the Contractor's responsibility to preserve such field locations during the construction process. Water valves, water valve boxes or fire hydrants damaged during construction shall be repaired by the Contractor at his own expense.

7. The Contractor shall be responsible for preserving property irons. The Contractor will be required to re-establish any property irons which are damaged or destroyed by his construction operations. Such irons shall be re-established by a licensed land surveyor in accordance with state law.

8. All areas disturbed by construction shall be seeded at 300 lbs./acre with Rye Grass immediately following construction in that area. Contractor shall prepare ground per City specifications.

9. A saw cut of at least one-half the depth of existing surface courses or one-fourth the depth of the existing total pavement thickness shall be provided at locations where proposed construction abuts an existing surface course or pavement for which partial removal of that surface or pavement is required. Sawed joint to facilitate removal within three (3) feet of existing joints will not be permitted and for such instances the limits of removal shall extend to the existing joint. Such saw cuts will not be paid for directly and this cost shall be considered as subsidiary to the removal of the surface or pavement.

10. Contractor shall be responsible for removal, repair, and replacement of all irrigation systems, landscaping, and/or sod affected during construction. All costs associated with the removal, repair, and replacement of irrigation systems, landscaping, or sod shall be included in "Site Clearing & Restoration" bid item.



Project Earthwork Totals
 Excavation = 92 C.Y.
 Loose Fill = 107 C.Y.
 Compacted Fill = 152 C.Y.

Total Project Length
 1.39 L.F. = 0.027 Miles

Proposed Street:

Scale: 1" = 60'

Benchmark:

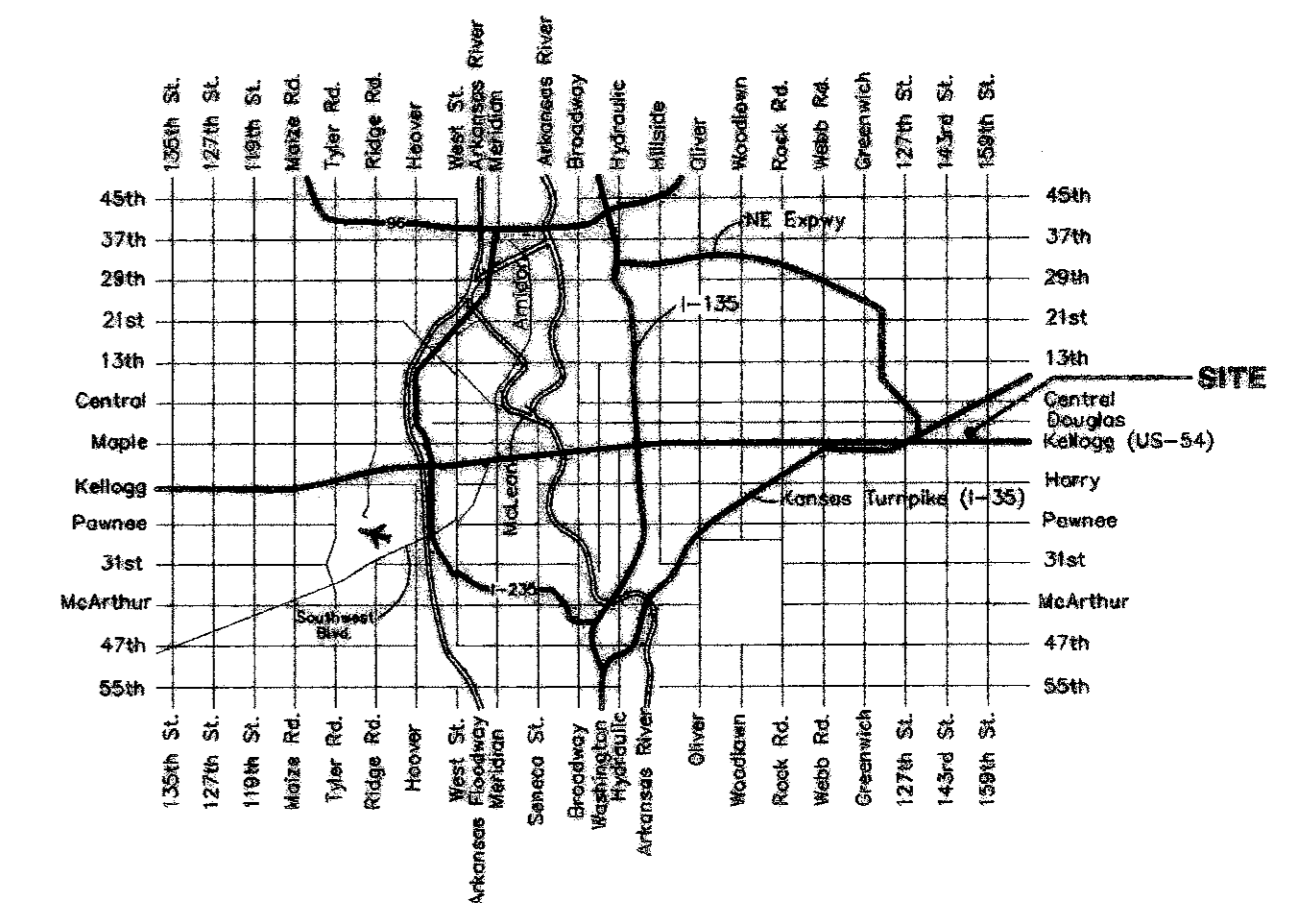
BM #1 "□" Cut in top of curb at PC adjacent to Res. "A", Belle Terre South 2nd Addition.
 Elev. = 121.32 (City Datum)

BM #2 "□" Cut in top of curb at NW corner of Lot 23, Block 3, Belle Terre South Addition.
 Elev. = 119.77 (City Datum)

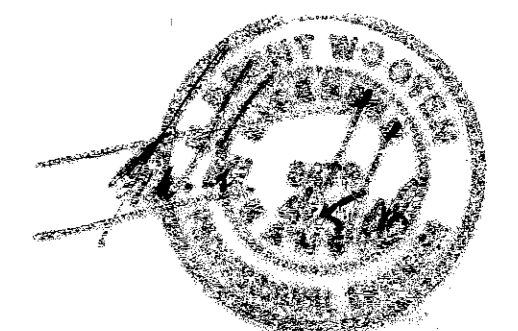
BM #3 "□" Cut in top of curb at NE corner of Lot 2, Block 1, Belle Terre South Addition.
 Elev. = 116.99 (City Datum)

Sheet Index

Title Sheet	1
31' Pavement Detail	2
Miscellaneous Details	3
Grand Mere Ct.	4
Earthwork Cross Sections	5
Copy of Plat	6



Vicinity Map



Baughman Engineering, P.A. 315 Ellis St. Wichita, KS 67211 P 316-262-7271 F 316-262-0445
 ENGINEERING | SURVEYING | PLANNING | LANDSCAPE ARCHITECTURE