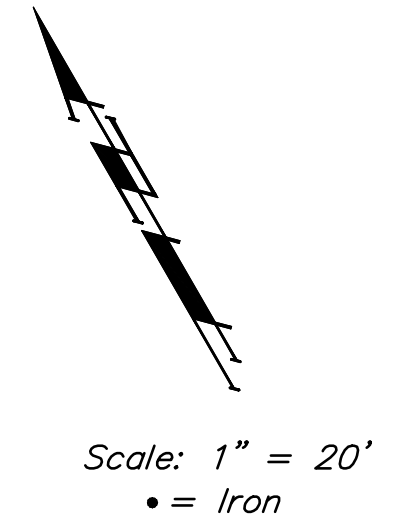


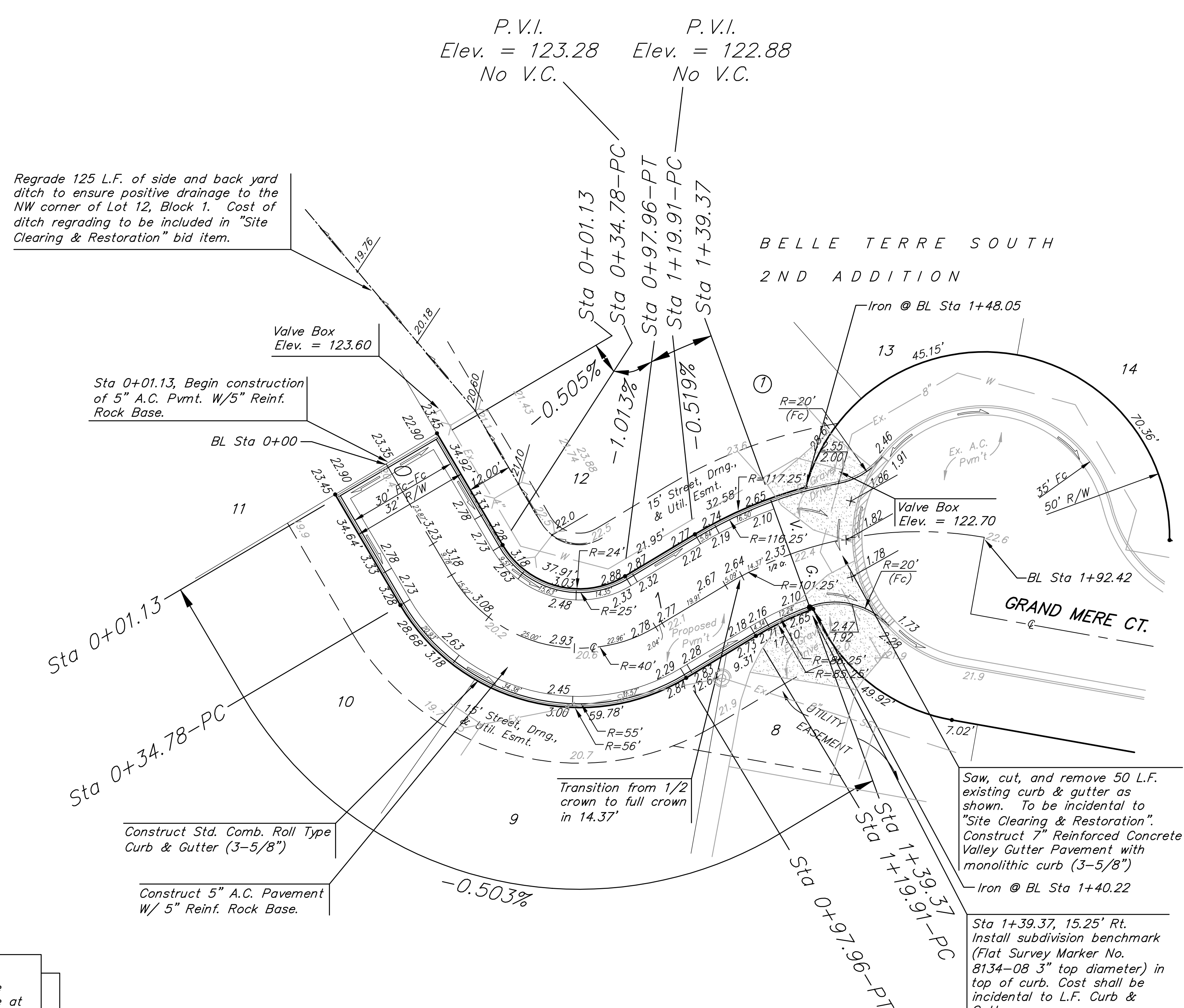
BENCHMARKS:
 BM #1 "□" Cut in top of curb at PC adjacent to Res. "A", Belle Terre South 2nd Addition.
 Elev. = 121.32 (City Datum)

BM #2 "□" Cut in top of curb at NW corner of Lot 23, Block 3, Belle Terre South Addition.
 Elev. = 119.77 (City Datum)

BM #3 "□" Cut in top of curb at NE corner of Lot 2, Block 1, Belle Terre South Addition.
 Elev. = 116.99 (City Datum)



Regrade 125 L.F. of side and back yard ditch to ensure positive drainage to the NW corner of Lot 12, Block 1. Cost of ditch regrading to be included in "Site Clearing & Restoration" bid item.



Sta 0+01.13, Begin construction of 5" A.C. Pvmnt. W/5" Reinf. Rock Base.

Construct Std. Comb. Roll Type Curb & Gutter (3-5/8")

Construct 5" A.C. Pavement W/ 5" Reinf. Rock Base.

Saw, cut, and remove 50 L.F. existing curb & gutter as shown. To be incidental to "Site Clearing & Restoration". Construct 7" Reinforced Concrete Valley Gutter Pavement with monolithic curb (3-5/8")

Sta 1+39.37, 15.25' Rt. Install subdivision benchmark (Flat Survey Marker No. 8134-08 3" top diameter) in top of curb. Cost shall be incidental to L.F. Curb & Gutter.

NOTE: Install 8' wide Curlex I or II Excelsior Blanket, or equal, on prepared surface back of curb. Edge of blanket will be at back of curb. Install per manufacturer's recommendation, including staples, and to City of Wichita specifications.

Curve #1
 Curve Data Based on Centerline
 Rad. = 40.00' Delta = 90° 30' 10" Tangent = 40.35'
 Arc = 63.18' L.C. = 56.82' Def/Ft. = 42.97378 Min.

Station	Arc	FACE CHORD LENGTHS		Defl.	T. Defl.
		8' Lt.	8' Rt.		
0+34.78	-	-	-	0'00'00"	0'00'00"
0+50.00	15.22'	6.43'	23.83'	10°54'03"	10°54'03"
0+75.00	25.00'	10.45'	38.74'	17°54'21"	28°48'24"
0+97.96	22.96'	9.63'	35.67'	16°26'41"	45°15'05"

Curve #2
 Curve Data Based on Centerline
 Rad. = 101.25' Delta = 41°01' 44" Tangent = 37.88'
 Arc = 72.51' L.C. = 70.96' Def/Ft. = 16.97513 Min.

Station	Arc	FACE CHORD LENGTHS		Defl.	T. Defl.
		8' Lt.	8' Rt.		
1+19.91	-	-	-	0'00'00"	0'00'00"
1+25.00	5.09'	6.25'	3.93'	1°26'24"	1°26'24"
1+39.37	14.37'	17.62'	11.10'	4°03'56"	5°30'20"
1+50.00	10.63'	13.04'	8.21'	3°00'27"	8°30'47"
1+75.00	25.00'	30.60'	19.27'	7°04'23"	15°35'10"
1+92.42	17.42'	21.35'	13.44'	4°55'42"	20°30'52"

Subdivision Bench Mark

Street & Station	Location Description	Elevation
Grand Mere Ct. 1+39.37, 15.25' Rt.	At W. End of S. Curb Return adjacent to valley gutter in Grand Mere Ct.	

NOTE: ROLL TYPE CURB & GUTTER TO BE CONSTRUCTED ON THE PAVEMENT SHOWN ON THIS SHEET. TOP OF CURB ELEVATIONS ARE GIVEN FOR FULL HEIGHT CURB.

BELLE TERRE SOUTH 2ND
GRAND MERE COURT

Baughman
 ENGINEERING | SURVEYING | PLANNING | LANDSCAPE ARCHITECTURE

Baughman Company, P.A. 315 Ellis St. Wichita, KS 67211 P 316-262-7771 F 316-262-0149

PROJECT NUMBER 472-84502	DESIGN TJW	DRAWN TJW
REVISIONS: 4-1-08 Grade ditch to drain adjacent to the NW corner Lot 12.	TJW	APPROVED NBW
		DATE 06/07
		SCALE Noted
		SHEET 4 OF 6

E:\Belle Terre South 2nd\Str1.dwg 07-02-E751