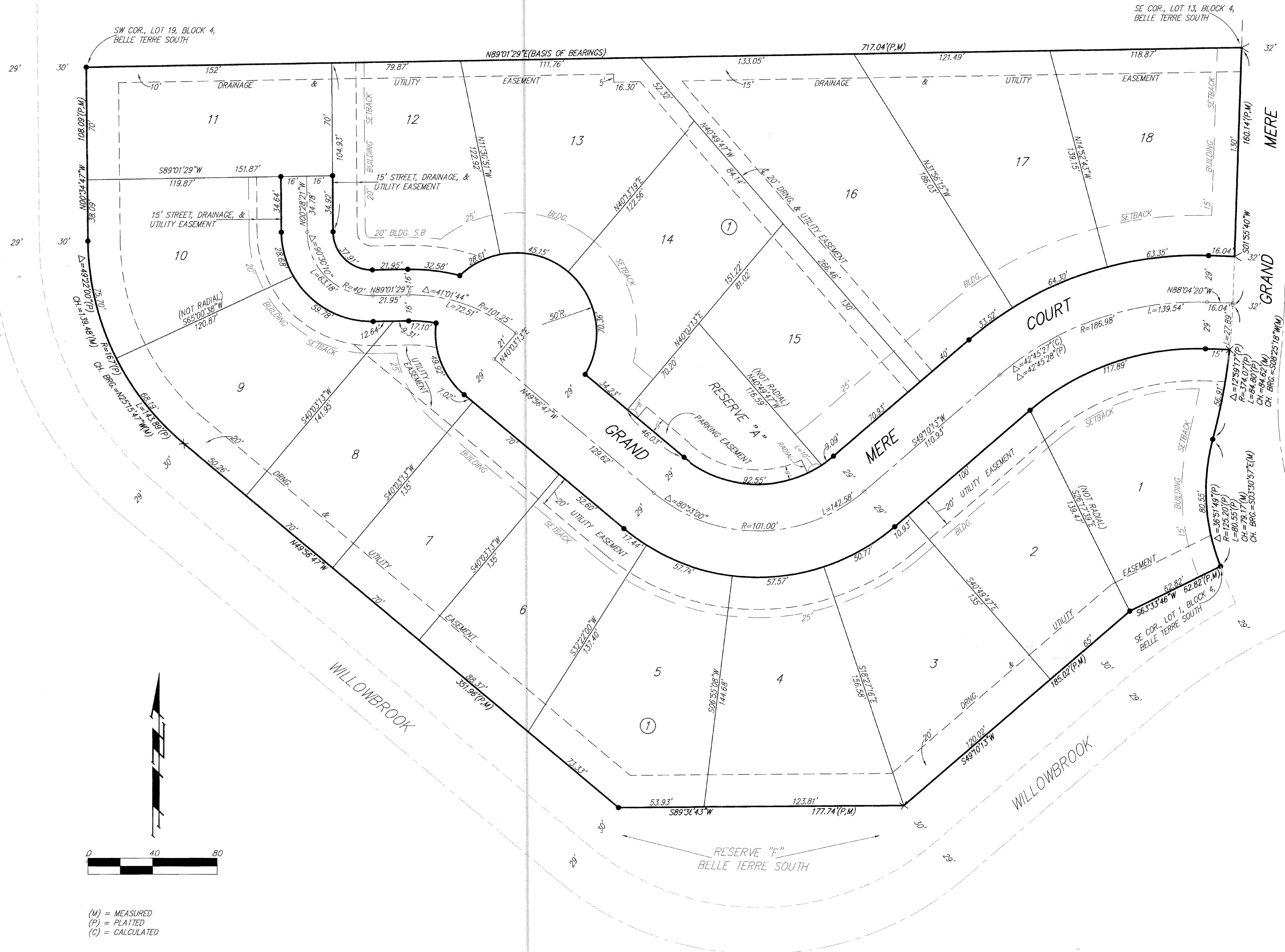


# BELLE TERRE SOUTH 2ND

## AN ADDITION TO SEDGWICK COUNTY, KANSAS



(M) = MEASURED  
 (P) = PLATTED  
 (C) = CALCULATED

● = #4 REBAR W/ "BAUGHMAN" CAP (SET)  
 X = CROSS (SET)  
 V = "V" NOTCH (SET)

NOTE:  
 A MASTER GRADING PLAN FOR DRAINAGE HAS BEEN DEVELOPED FOR THIS SUBDIVISION AND IS ON FILE WITH THE APPROPRIATE GOVERNING BODY. ALL DRAINAGE EASEMENTS, RIGHTS-OF-WAY, OR RESERVES SHALL REMAIN AT ESTABLISHED GRADES OR AS MODIFIED WITH THE APPROVAL OF THE APPROPRIATE CITY OR COUNTY ENGINEER. NO OBSTRUCTIONS WHICH IMPEDE THE FLOW OF THIS DRAINAGE SYSTEM SHALL BE ALLOWED.

2000  
 CK

State of Kansas) SS  
 Sedgwick County) We, Baughman Company, P.A., Surveyors in aforesaid county and state do hereby certify that we have surveyed and platted "BELLE TERRE SOUTH 2ND", an Addition to Sedgwick County, Kansas and that the accompanying plat is a true and correct exhibit of the property surveyed, described as and being a replat of Lots 1-12 inclusive, Block 4, Belle Terre South, an Addition to Sedgwick County, Kansas, together with that part of Grand Mere Court lying between said Lots.

All being situated in the SE 1/4 of Sec. 24, Twp. 27-S, R-2-E of the 6th P.M., Sedgwick County, Kansas.

Existing easements and dedications being vacated by virtue of K.S.A. 12-512(b).

Baughman Company, P.A.

*Michael C. Conrey*, Surveyor  
 Michael C. Conrey

Know all men by these presents that we, the undersigned, have caused the land in the surveyors certificate to be platted into Lots, a Block, a Street, and a Reserve, to be known as "BELLE TERRE SOUTH 2ND", an Addition to Sedgwick County, Kansas. The street, drainage, and utility easements are hereby granted as indicated for street related purposes, for drainage purposes, and for the construction and maintenance of all public utilities. The utility easements are hereby granted as indicated for the construction and maintenance of all public utilities. The drainage and utility easements are hereby granted as indicated for drainage purposes and for the construction and maintenance of all public utilities. The parking easement is hereby granted as indicated for residential parking only and no obstructions shall be constructed or placed on or within this easement. The street is hereby dedicated to and for the use of the public. Reserve "A" is hereby reserved for open space, landscaping, parking as confined to easement, berms, gazebos, sidewalks, and drainage. Reserve "A" shall be owned and maintained by the homeowners association for the addition.

Belle Terre Grand, LC

*Gregory C. Downing*, Member  
 Gregory C. Downing

State of Kansas) SS  
 Sedgwick County) The foregoing instrument acknowledged before me, this 15th day of November, 1999, by Gregory C. Downing, Member of Belle Terre Grand, LC, on behalf of the company.

*Thomas V. Wapelhorst*, Notary Public  
 Thomas V. Wapelhorst  
 My App'l. Exp. 9-2-2003

We the undersigned holders of a mortgage on the above described property, do hereby consent to this plat of "BELLE TERRE SOUTH 2ND", an Addition to Sedgwick County, Kansas.

State Bank of Colwich

*Steve Gagen*, AVP  
 STEVE GAGEN

State of Kansas) SS  
 Sedgwick County) This is to certify that this plat has been filed for record in the office of the Register of Deeds, this 29th day of July, 2000, at 3:17 o'clock P.M. and is duly recorded.

SUSAN K. MONETTE, Notary Public  
 SUSAN K. MONETTE  
 My App'l. Exp. 11/9/2003

# 1903051

We the undersigned holders of a mortgage on the above described property, do hereby consent to this plat of "BELLE TERRE SOUTH 2ND", an Addition to Sedgwick County, Kansas.

The Prairie State Bank

*Mike S. Sikes*, SE VP  
 MIKE S. SIKES

State of Kansas) SS  
 Sedgwick County) The foregoing instrument acknowledged before me, this 4th day of November, 1999, by MIKE S. SIKES, SE, V.P. of The Prairie State Bank, on behalf of the bank.

*Judith M. Terhune*, Notary Public  
 JUDITH M. TERHUNE  
 My App'l. Exp. 11-7-2001

This plat of "BELLE TERRE SOUTH 2ND", an Addition to Sedgwick County, Kansas has been submitted to and approved by the Wichita-Sedgwick County Metropolitan Area Planning Commission, Wichita, Kansas.

Dated this 29th day of July, 1999,  
 Wichita-Sedgwick County Metropolitan Area Planning Commission

*William M. Johnson*, Chairman  
 William M. Johnson  
*Marvin S. Krout*, Secretary  
 Marvin S. Krout

This plat approved and all dedications shown hereon accepted by the City Council of the City of Wichita, Kansas, this 9th day of May, 2000

*Bob Knight*, Mayor  
 Bob Knight  
*Pat Burnett*, City Clerk  
 Pat Burnett

This plat approved and all dedications shown hereon accepted by the Board of Commissioners of Sedgwick County, Kansas, this \_\_\_ day of \_\_\_, 2000

Thomas G. Winters, Chairman  
 Thomas G. Winters  
 James Alford, County Clerk  
 James Alford

Reviewed in accordance with K.S.A. 58-2005 on this 30th day of November, 1999

*Tricia L. Robello*, Deputy County Surveyor  
 Tricia L. Robello, LS #1246  
 Deputy County Surveyor  
 Sedgwick County, Kansas

Entered on transfer record this 24th day of July, 2000.

*James Alford*, County Clerk  
 James Alford

State of Kansas) SS  
 Sedgwick County) This is to certify that this plat has been filed for record in the office of the Register of Deeds, this 29th day of July, 2000, at 3:17 o'clock P.M. and is duly recorded.

*Bill Meek*, Register of Deeds  
 Bill Meek  
*Linda Kizire*, Deputy  
 Linda Kizire