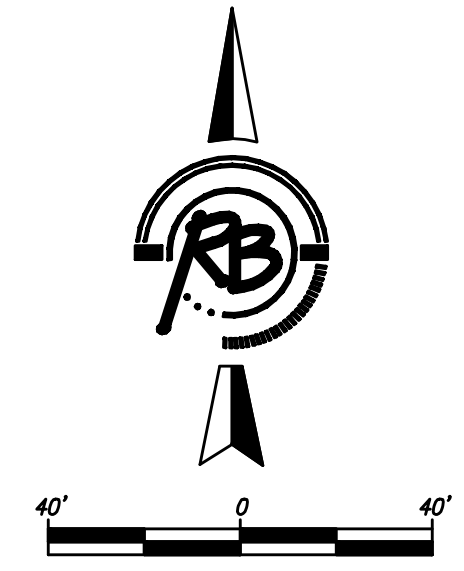


UNPLATTED

143RD ST.

CAMBRIA

CAMBRIA



N 18747.88 E 20051.69
STA. 20+00.00 WATER LINE 2
BL STA. 20+50.00, 45.00' LT
REMOVE 8" PLUG AND
CONNECT TO 8" GATE VALVE

N 18747.96 E 20110.30
STA. 20+58.61 WATER LINE 2
BL STA. 21+08.61, 45.00' LT
1-22.5' MJ BEND

N 18726.02 E 20155.23
STA. 21+08.61 WATER LINE 2
BL STA. 21+53.51, 23.00' LT
1-22.5' MJ BEND

N 18761.79 E 20405.55
PT = 23+68.63 WATER LINE 2
BL STA. 24+31.91, 23.00' LT

N 18801.95 E 20444.50
STA. 24+24.57 WATER LINE 2
BL STA. 24+87.85, 23.00' LT
1-45' MJ BEND (VERT.)
3.66 L.F. 8" DI CL PIPE
N 18804.58 E 20447.05
STA. 24+28.23 WATER LINE 2
BL STA. 24+91.51, 23.00' LT
1-45' MJ BEND (VERT.)

N 18870.34 E 20510.82
STA. 25+19.84 WATER LINE 2
BL STA. 25+83.12, 23.00' LT
1-FH ASS'Y, L=5.0'
BURY LINE ELEV.=1308.32
VALVE BOX ELEV.=1308.42

N 18922.02 E 20560.95
PC = 25+91.84 WATER LINE 2
BL STA. 26+55.12, 23.00' LT

N 18784.97 E 20428.03
STA. 24+00.91 WATER LINE 2
BL STA. 24+64.19, 23.00' LT
1-45' MJ BEND (VERT.)
3.66 L.F. 8" DI CL PIPE
N 18787.59 E 20430.57
STA. 24+04.57 WATER LINE 2
BL STA. 24+67.85, 23.00' LT
1-45' MJ BEND (VERT.)

N 18726.25 E 20321.72
PC = 22+75.10 WATER LINE 2
BL STA. 23+20.00, 23.00' LT

58.61 LF 8" PIPE

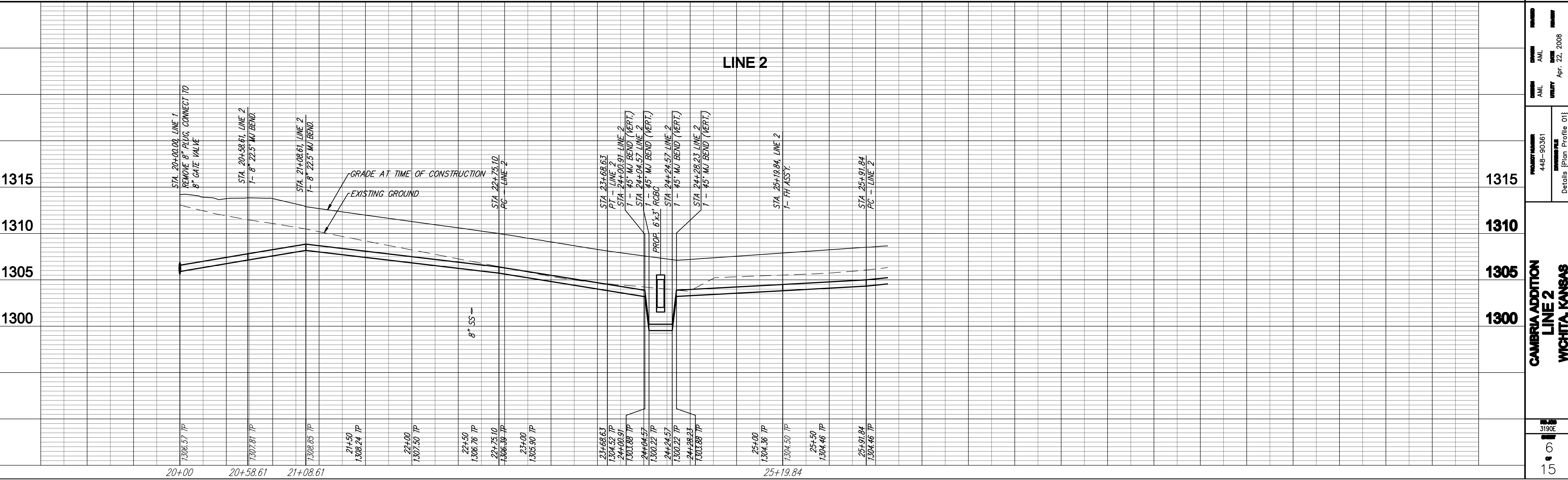
50.00 LF 8" PIPE

20.00 LF 8" PIPE

72.00 LF 8" PIPE

91.61 LF 8" PIPE

292.30 LF 8" PIPE



LINE 2

20+00 20+58.61 21+08.61 21+50 1308.24 TP 22+00 1307.50 TP 22+50 1306.76 TP 22+75.10 1306.30 TP 23+00 1305.90 TP 23+68.63 1304.32 TP 24+00.91 1303.88 TP 24+04.57 1300.22 TP 24+04.57 1300.22 TP 24+28.23 1303.88 TP 25+00 1304.36 TP 25+19.84 1304.50 TP 25+50 1304.46 TP 25+91.84 1304.46 TP

Rough & Decker, P.A.
Engineering, Surveying, Land Planning
Professional Engineers
Professional Surveyors
Professional Land Planners

**CAMBRIA ADDITION
LINE 2
WICHITA, KANSAS**

PROJECT NUMBER: 448-90361
DRAWING TITLE: Details {Plan Profile 01}

DATE: Apr. 22, 2008

3190
15