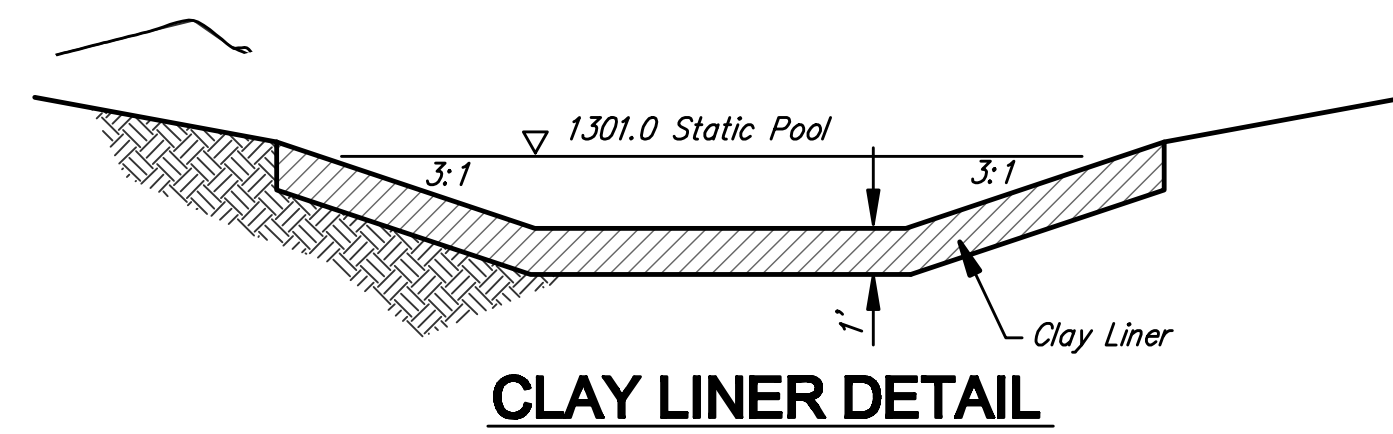
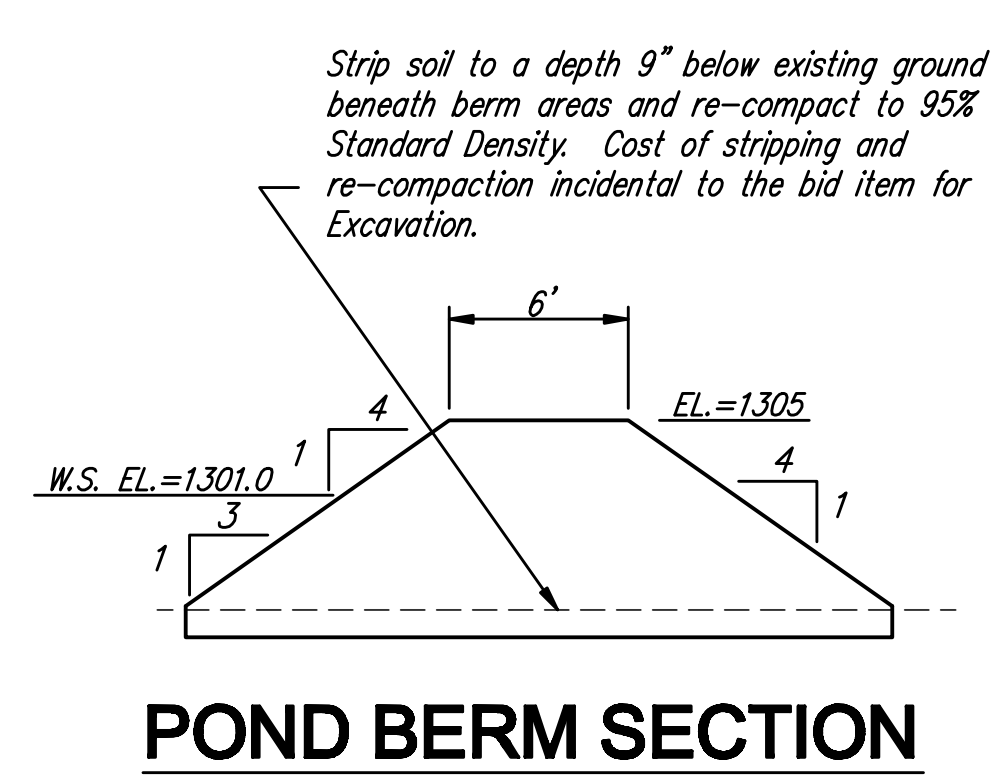
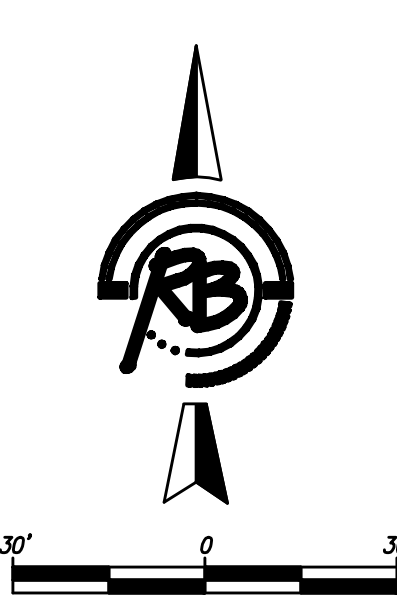
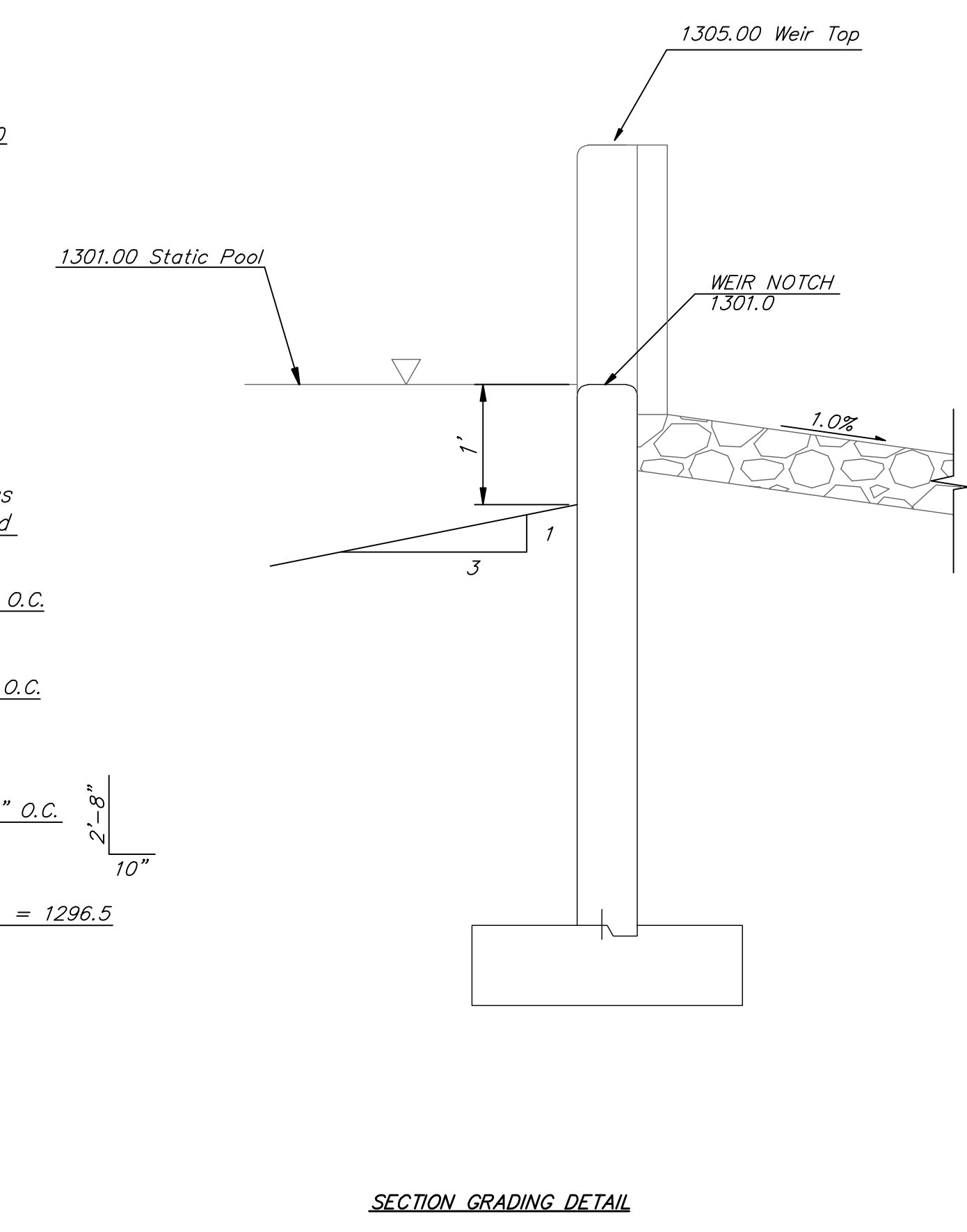
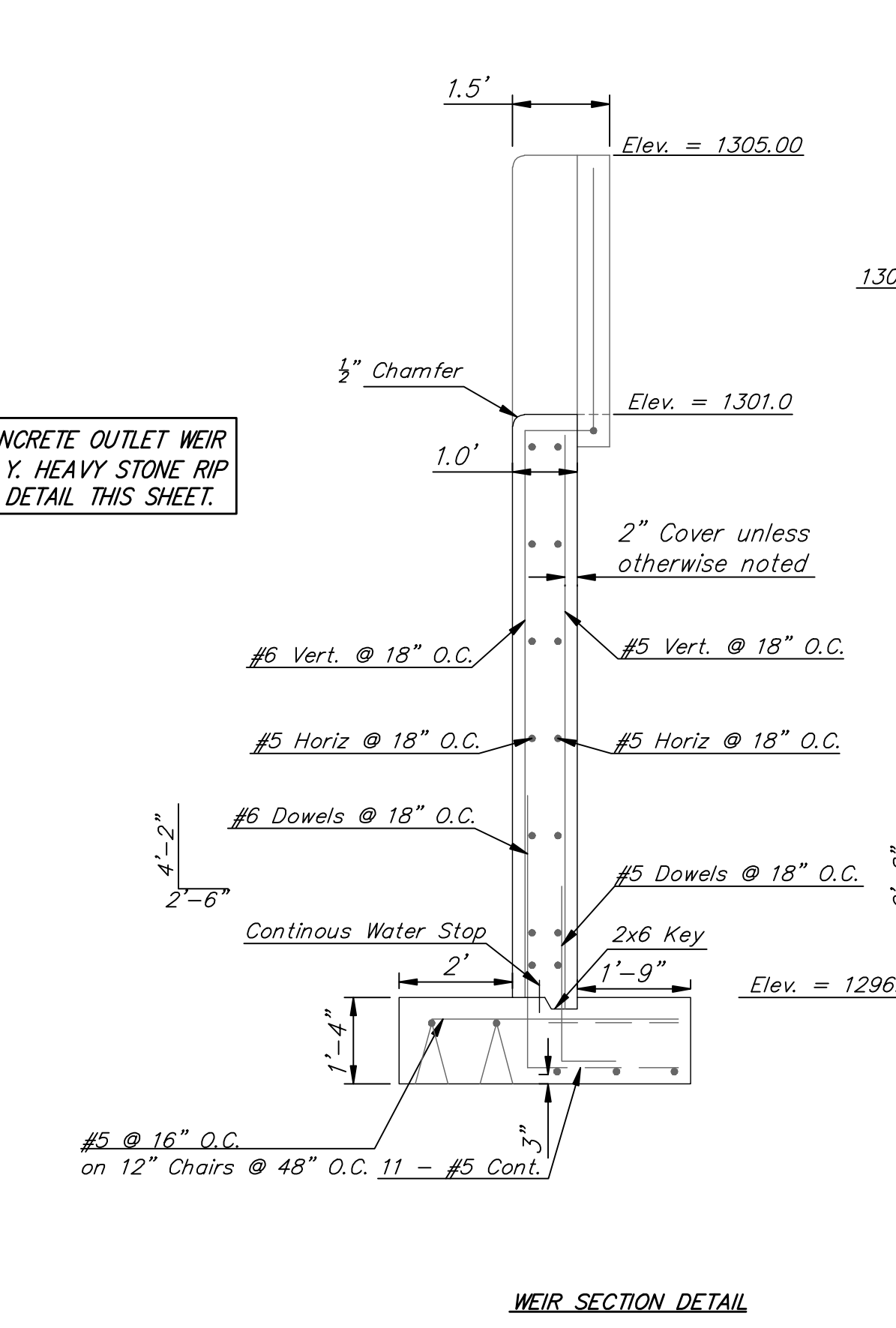
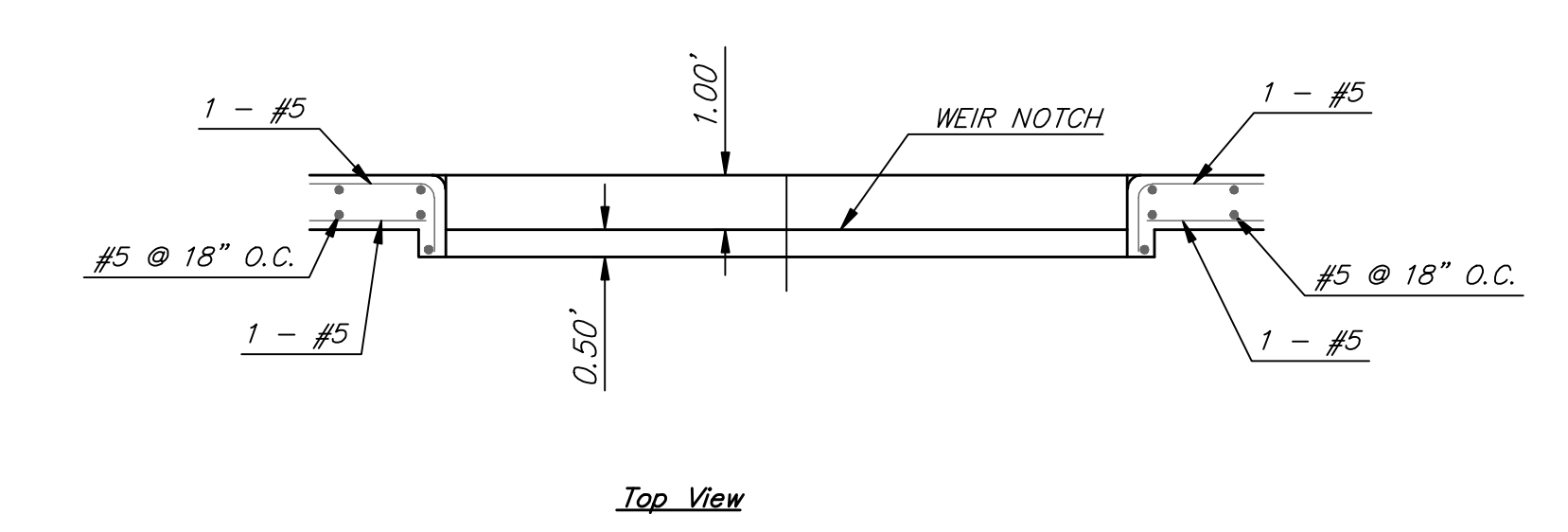
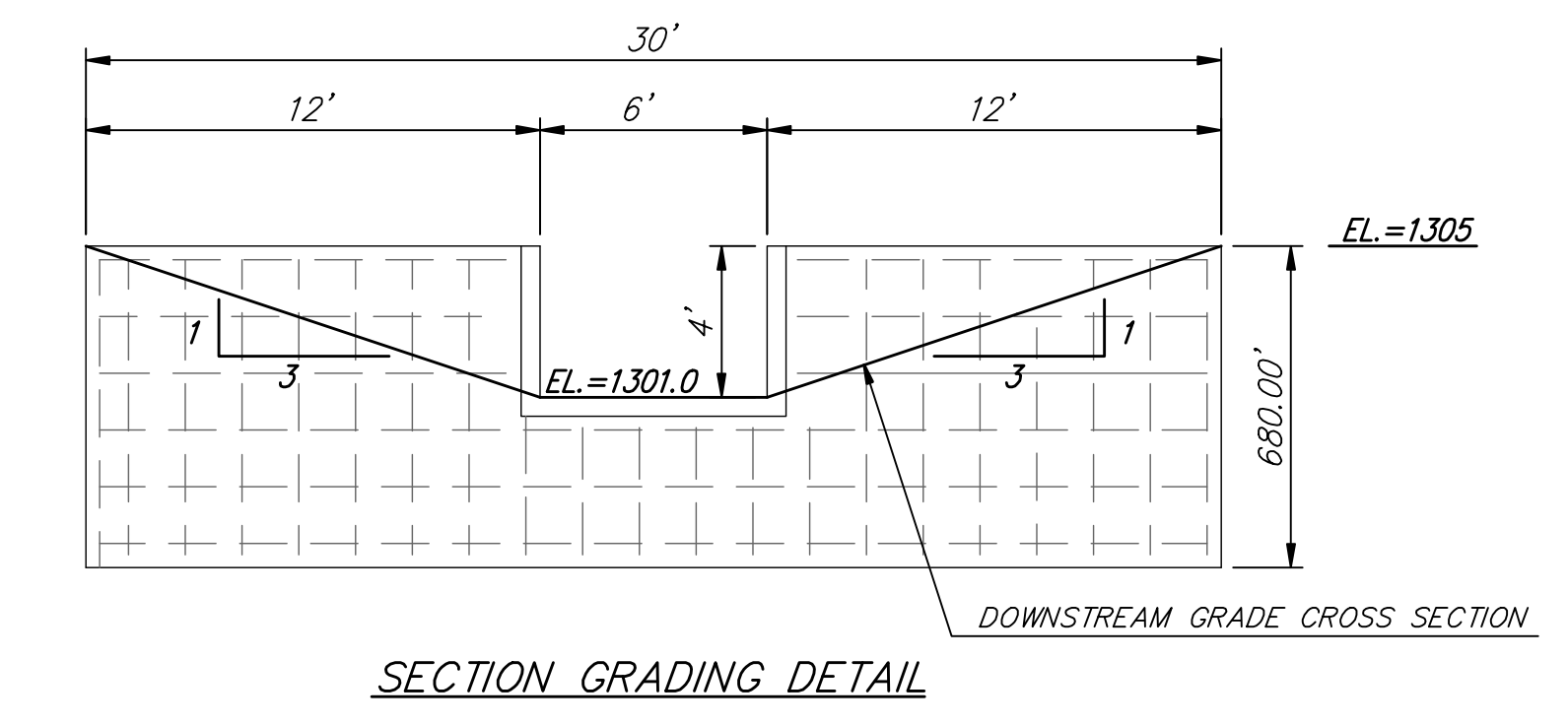
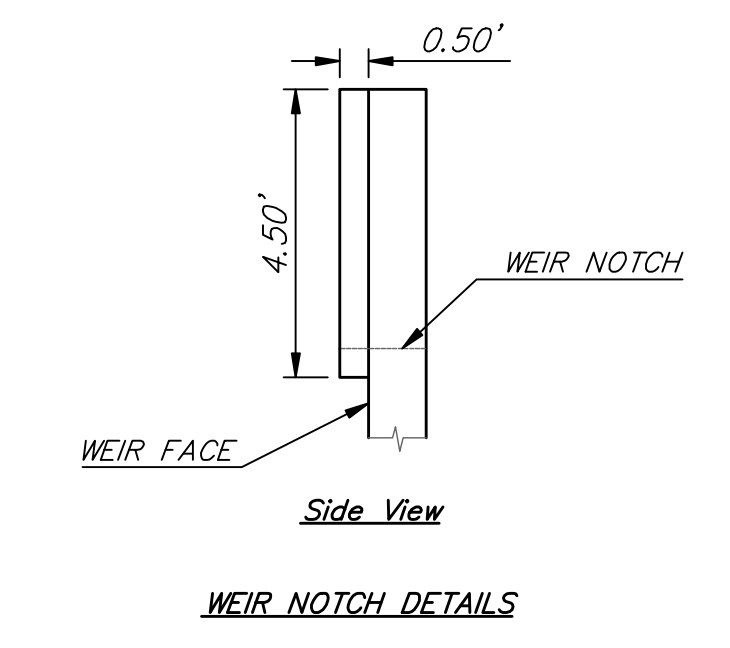
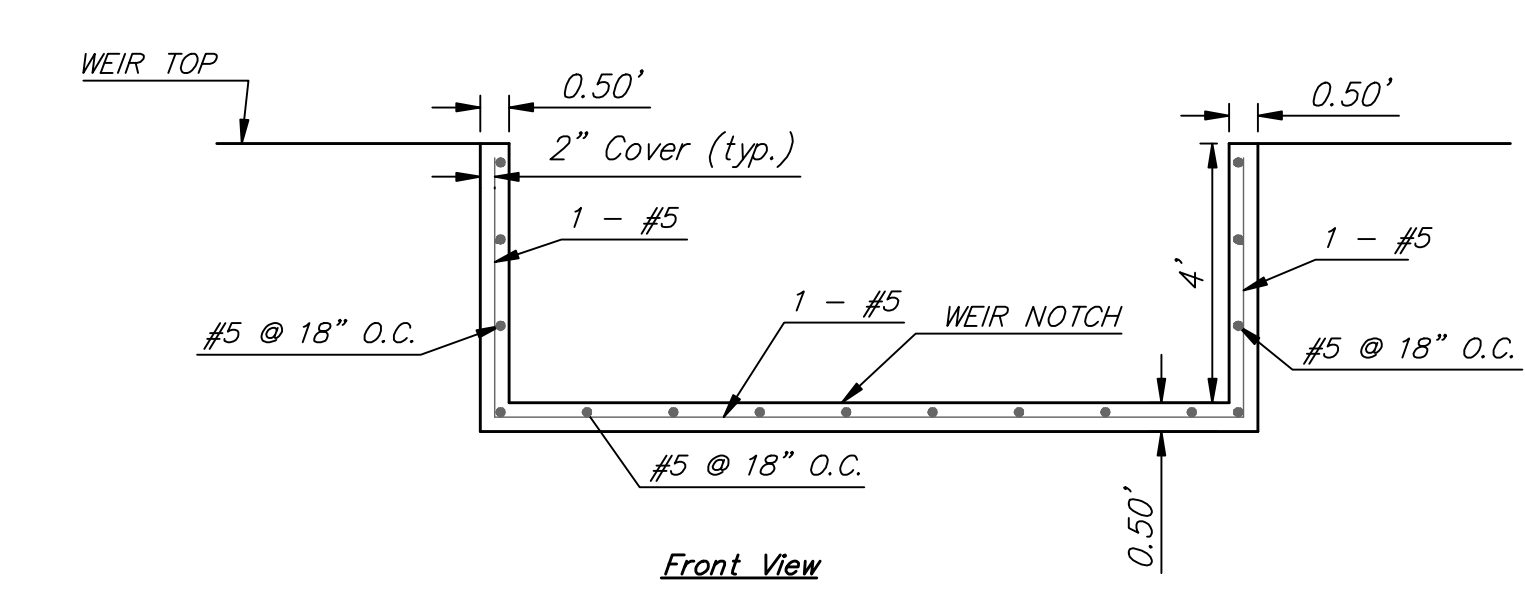
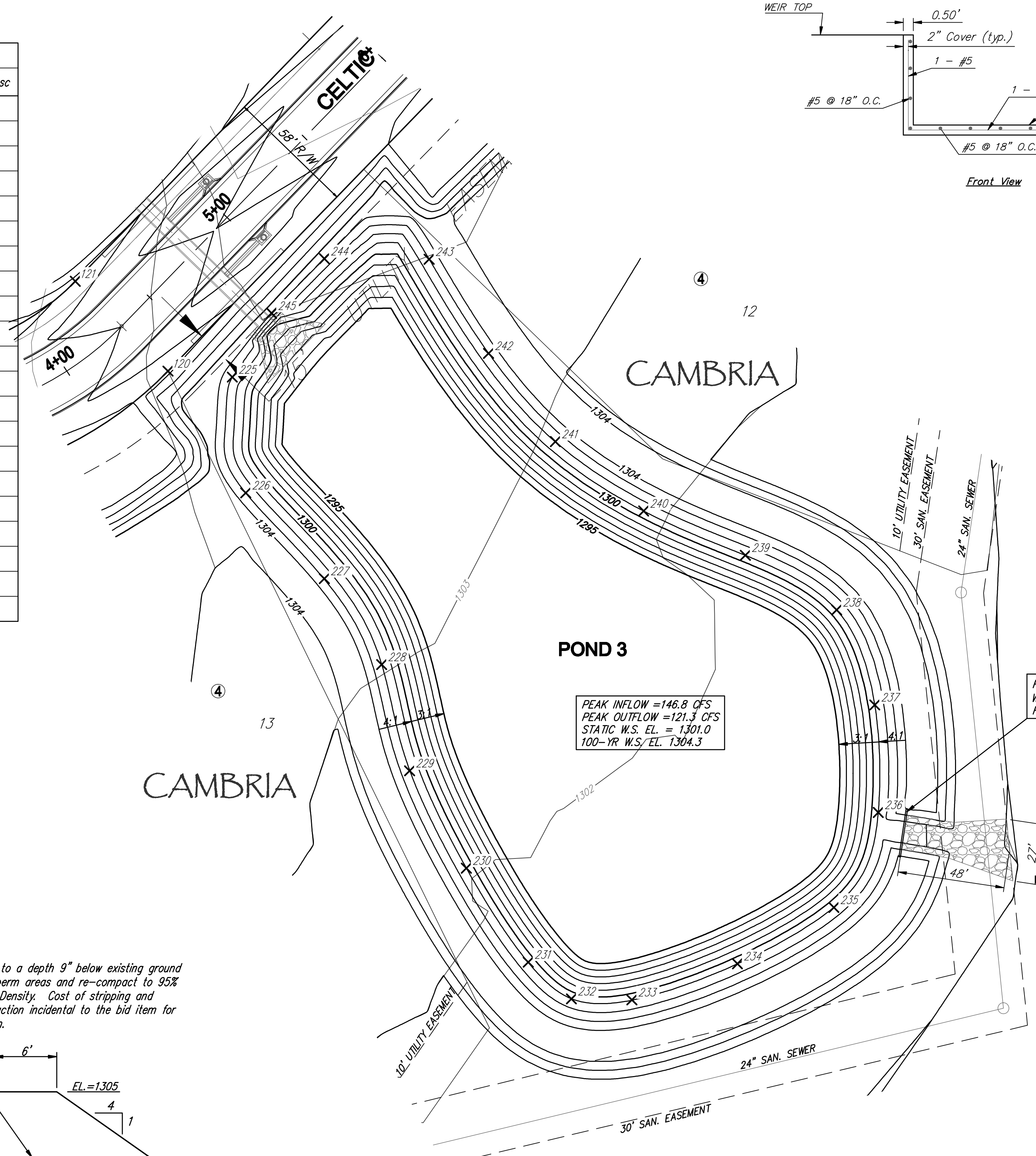


Point Table			
Point #	Northing	Easting	Desc
225	18722.90	20471.81	
226	18670.83	20477.86	
227	18632.31	20513.18	
228	18593.68	20538.92	
229	18545.91	20551.47	
230	18502.17	20576.99	
231	18459.90	20604.79	
232	18443.38	20624.17	
233	18442.92	20651.38	
234	18459.19	20698.79	
235	18484.48	20742.15	
236	18527.19	20762.10	
237	18575.54	20760.50	
238	18618.23	20743.40	
239	18642.81	20702.34	
240	18662.71	20656.64	
241	18693.89	20616.98	
242	18733.53	20586.96	
243	18775.87	20560.25	
244	18776.09	20513.20	
245	18751.59	20489.50	



NOTE: THE POND BOTTOM AND SIDES ARE TO BE LINED WITH CLAY TO A MINIMUM DEPTH OF ONE FOOT, MOISTURE CONDITIONED AND COMPACTED TO A MINIMUM OF 95 PERCENT OF STANDARD PROCTOR DENSITY (ASTM D-698) FROM MINUS 3 TO PLUS 3 PERCENT OF OPTIMUM MOISTURE CONTENT. ON SITE CLAY IS SUITABLE FOR POND LINER. SOIL TO BE PAID AS "POND LINER C.Y."

**CAMBRIA ADDITION  
POND 3 PLAN  
WICHITA, KANSAS**

**Ruggles & Bohm, P.A.**  
Engineering, Surveying, Land Planning

834 North Main  
Wichita, Kansas 67203  
www.rbkansas.com

Phone: 304-6888  
Fax: 316-421-1111  
E-mail: info@rbkansas.com

REVISIONS

NO.	DESCRIPTION	DATE
1	AML	
2	AML	
3	UTILITY	

DATE: Feb. 20, 2008

PROJECT: SWD Plan01 {Pond 1}

DRAWING NUMBER: 468-84481