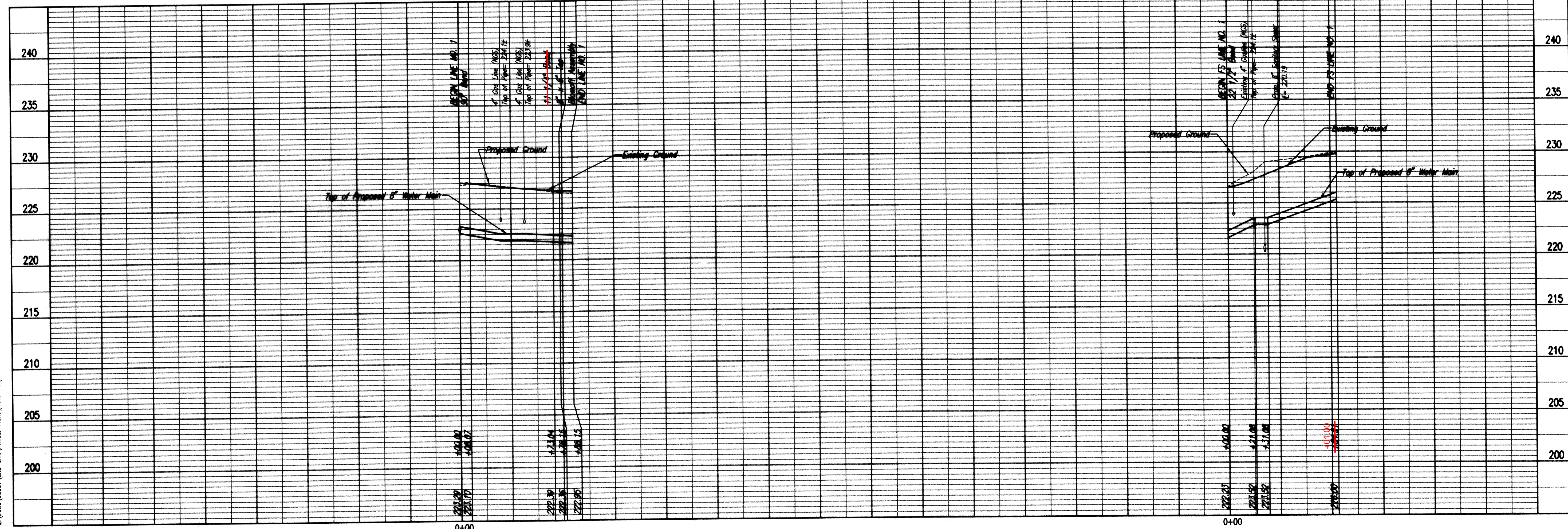


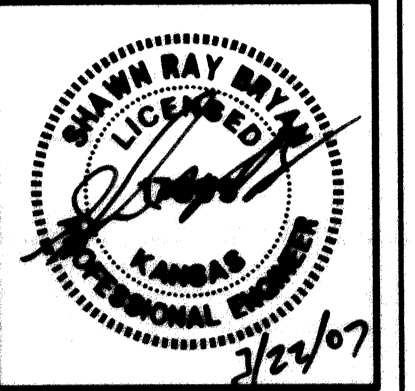
* PRIOR TO BEGINNING CONSTRUCTION, THE CONTRACTOR SHALL EXCAVATE THE EXISTING 8" WATERLINE AT STATION 0+00.00 TO VERIFY PIPE SIZE, TYPE, FITTINGS, AND HORIZONTAL AND VERTICAL LOCATION. THE CONTRACTOR SHALL REPORT HIS FINDINGS TO THE ENGINEER SO THAT ANY NECESSARY PLAN MODIFICATIONS MAY BE MADE. ANY ADDITIONAL LABOR OR MATERIALS NECESSARY TO COMPLETE THE CONNECTION SHALL BE CONSIDERED SUBSIDIARY TO THE PROJECT.

WATERLINE NO. 1

FIRE PROTECTION LINE NO. 1



Architectural Development Services, L.L.C.
 P.O. Box 49405
 Wichita, Kansas 67201
 Phone: 316 998-4343
 Fax: 316 998-8064



Ethanol Products Corporate Headquarters
 38th and Webb Road
 Wichita, Kansas

prints issued
 3-9-07
 For Construction

project no.
 06122

WATERLINE
 PLAN/PROFILE
C4.3
 of

Sheet 03-21-2007 5:29:58 PM by SW
 Plot Scale 1/40 03-21-2007 5:30:12 PM by SW
 C:\2006\06067\Site Civil\Private Plans\Waterline\06067-C4.3-Rev-01.dwg

Professional Engineering Consultants, P.A.
 303 S. TOPEKA • WICHITA, KANSAS 67202 • 316-262-2491 • FAX 316-262-3003
 www.pae1.com