

GENERAL NOTES:

1. City of Wichita Datum.
2. Contractor will be required to provide a minimum advance notice of twenty-four (24) hours to utility companies prior to starting any excavation as follows:

Kansas One-Call 1-800-344-7233

The Contractor must notify the following in case of an emergency:

Cox Cable	262-4270 or 263-2061
Kansas Gas & Electric - Gas	263-7511
Kansas Gas & Electric - Electric	264-1141
Arkla Gas Company	942-8350 or 263-8161
Southwestern Bell Tel. Co.	1-571-2611
City of Wichita Water Department	268-4908
City of Wichita Sewer Maintenance	268-4071

3. Existing utility lines and their location, as shown on the plans, represent the best information obtainable for design. The contractor will be required to work around existing utilities within the right-of-way which do not conflict with proposed construction.

4. Rubble from the removal of miscellaneous structures and excess excavation which is to be wasted shall be disposed of on sites to be provided by the Contractor. These sites shall be approved by the Engineer as to suitability, appearance and site location. Locations that, in the opinion of the Engineer, will leave an unsightly appearance will not be approved.

All disposal sites must be approved by the Kansas Department of Health and Environment. Material either stockpiled or disposed of in a flood plain would require a Kansas State Board of Agriculture permit. Any material dumped in waters of the United States or wetlands is subject to U.S. Corps. of Engineers permitting regulations. Any material buried or stockpiled beyond approved construction limits would require additional archaeological investigations unless buried in a previously approved borrow location.

5. The Contractor shall be responsible for maintaining continuous flow of sewage through construction. Contractor's proposed method for maintaining sewage flow shall be approved by the Engineer. Cost of maintaining flow of sewage through construction will not be paid for directly and this cost shall be considered subsidiary to the other pay items of the work.

6. The Contractor shall be responsible for preserving property irons. The Contractor will be required to re-establish any property irons which are damaged or destroyed by construction operations. Such irons shall be re-established by a licensed land surveyor in accordance with state laws.

7. Trees and shrubs in public right-of-way which are in direct conflict with proposed new construction shall be removed by the Contractor with the Engineer's approval. Trees and shrubs which are not in direct conflict with the proposed new construction shall be saved and protected from damage.

8. Contractor shall vacuum test all manholes according to the City of Wichita standard specifications.

9. The tops of all Manholes to be set 0.4 feet above existing ground unless otherwise noted.

10. All areas disturbed by sewer construction, i.e. R/W, easements, and adjacent properties shall be restored with the same grass/sod as per AR 78.

11. Contractor shall maintain all existing BMP(s) on project site during construction. Contractor shall repair or replace any existing BMP(s) that are damaged (Cost subsidiary to site restoration). If BMP(s) were damaged prior to contractor beginning work on project, notify construction inspector or engineer.

12. Contractor shall backfill trench with sand and flush per City of Wichita specifications.

13. Traffic control as necessary shall be per the latest addition of the MUTCD.

14. Depth & location of all existing utilities shown must be field verified.

CONSTRUCTION PLANS WATER LINE EXTENSIONS

Lots 1 and 2, Block 1 and Lot 1, Block 2 Killarney Plaza Second Addition

TO
THE CITY OF WICHITA, KANSAS

JAMES ARMOUR, P.E. - CITY ENGINEER
1357 PPW

BENCH MARKS

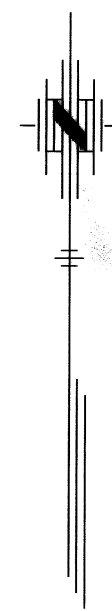
City of Wichita Bench #3 from plat of Killarney Plaza Second Addition "I" cut on top curb at W. end of N.W. Return at 36th & Inwood. Elev. 183.53'(City Datum) Elev. 1187.40'(1929 NAVD)

INDEX

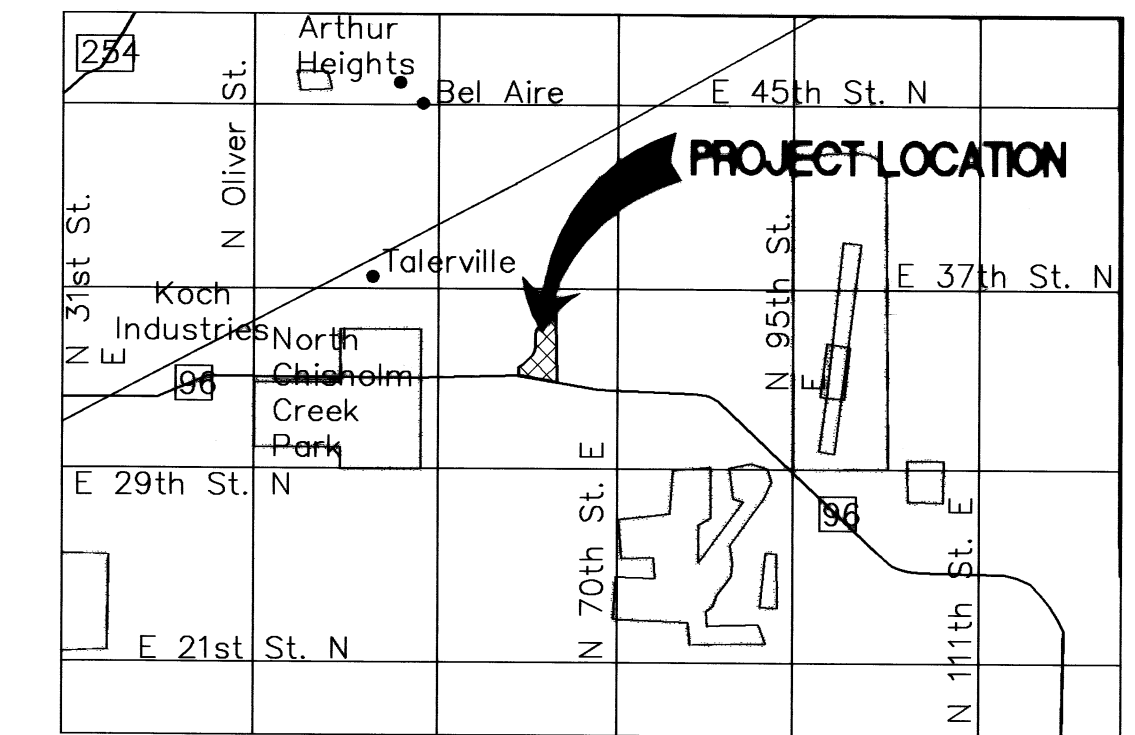
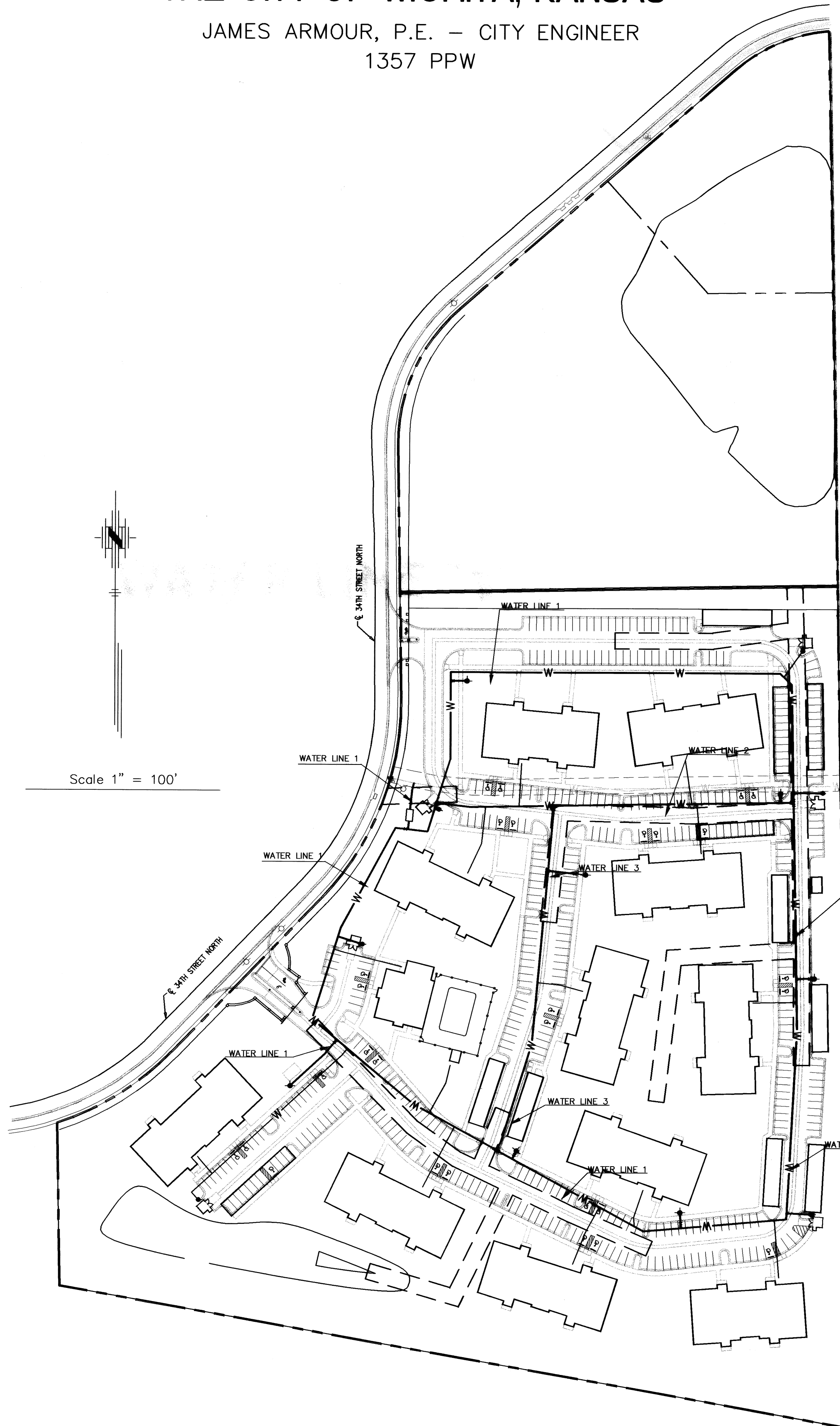
TITLE SHEET	SHEET 1
PLAN AND PROFILE	SHEET 2-6
WATERLINE DETAILS	SHEET 7
VAULT DETAILS	SHEET 8
EROSION CONTROL DETAILS	SHEET 9-13

LEGEND

- Fire Hydrant
- Fire Hydrant
- Yard Hydrant
- 8" Gate Valve



Scale 1" = 100'



LOCATION MAP
No Scale

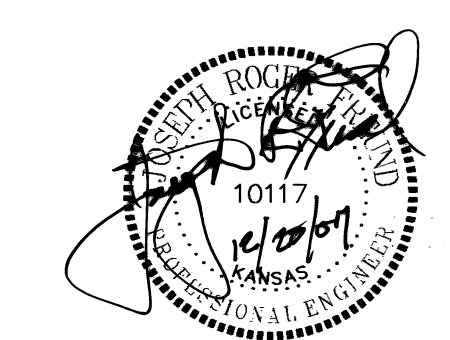
APPROVED AS NOTED
BY CITY ENGINEER OF WICHITA,
BY WICHITA WATER & SEWER DEPARTMENT,
& BY WICHITA FIRE DEPARTMENT

Public Works 11/10/08
Water & Sewer 1/17/08
Fire 1-22-08

NOTE TO CONTRACTORS
Inspection and testing for the waterline is to be provided by a Licensed Consulting Engineering Firm under contract with the Owner/Developer. Said inspection to be in accordance with the City of Wichita standard construction engineering practices and certified by a Professional Engineer Licensed in the state of Kansas. No work shall be performed in dedicated easements or public right-of-way by the Contractor without such inspection nor shall any work be commenced without written authorization by the City Engineer. All Construction and Materials shall comply with the City of Wichita Specifications and Standards (on file and available in the City Engineer's Office).

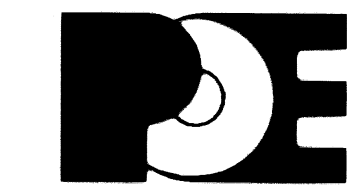
Private Property:
Installation and testing for the fire protection line is to be performed by a City of Wichita licensed fire protection contractor in accordance with the fire codes as adopted by the City of Wichita. All material and construction practices for the fire protection line shall comply with the fire codes as adopted by the City of Wichita (available from the City of Wichita Fire Department). The Contractor shall not commence work without notification and approval of the Wichita Fire Department. Inspection of the fire protection line is to be provided by a licensed Engineering Firm under contract with the Owner/Developer and the Fire Department. The contractor shall not start work until the project inspector is assigned to the project and present on the site. Any work done without inspection will be required to be uncovered for inspection.

AS BUILTS:
CONTRACTOR: Mies
INSPECTOR: LARRY GANN
COMPANY: K.E. Miller
DATE: 5/19/08



AUGUST 2007

PLANS PREPARED BY



POE & ASSOCIATES, INC.
CONSULTING ENGINEERS
5940 E. Central, Suite 200 ■ Wichita, KS 67208-4242
Phone 316/685-4114 FAX 316/685-4444