

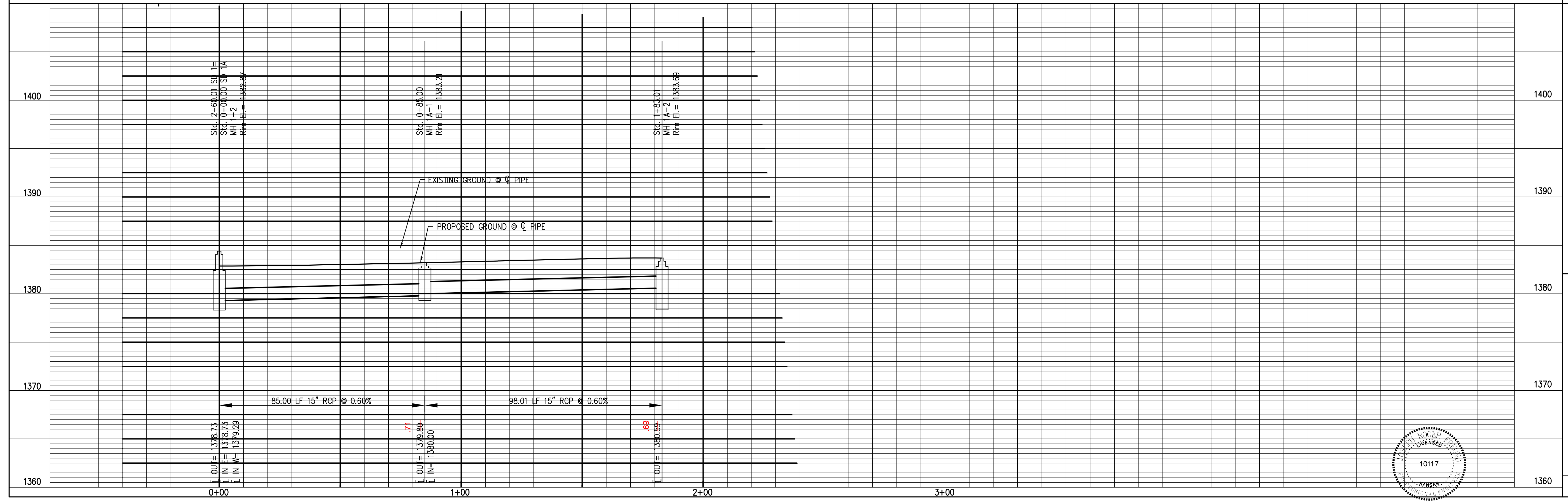
- GENERAL NOTES:**
1. MATERIALS USED FOR STONE RIP-RAP SHALL CONFORM TO THE REQUIREMENTS OF SUB-SECTION 1116 OF THE KANSAS DEPT. OF TRANSPORTATION STANDARD SPECIFICATIONS, ED 1990. GRADATION FOR EACH CLASS OF RIP-RAP SPECIFIED SHALL BE IN ACCORDANCE WITH THE ABOVE TABLE.
  2. BROKEN CONCRETE RIP-RAP MAY BE SUBSTITUTED FOR STONE RIP-RAP PROVIDED IT MEETS GRADATION REQUIREMENTS FOR THE CLASS OF RIP-RAP SPECIFIED.
  3. THE FOLLOWING UNITS OF MEASUREMENT SHALL APPLY TO ALL ITEMS OF WORK DETAILED ON THIS SHEET, UNLESS OTHERWISE SHOWN ON THE PROPOSAL.
  4. CONCRETE TRANSITION \_\_\_\_\_ SQUARE FOOT (ACTUAL EXPOSED SURFACE AREA)
  5. STONE RIP-RAP \_\_\_\_\_ SQUARE YARD (FOR EACH CLASS OF RIP-RAP)
  6. BROKEN CONCRETE RIP-RAP \_\_\_\_\_ SQUARE YARD (FOR EACH CLASS OF RIP-RAP)
  7. REFER TO "CONCRETE WASH CHECK, TRICKLE CHANNEL & FLUME" STANDARD DETAIL SHEET FOR CONCRETE TRICKLE CHANNEL DETAILS.

**RIE-RAP GRADATION REQUIREMENTS:**

CLASS	D <sub>10</sub>	D <sub>30</sub>	D <sub>47.5</sub>	*GRADATION, MINIMUM PERCENTAGE LARGER THAN						
				200	300	425	60	75	100	
1	0.075	0.150	0.250	100	100	100	100	100	100	100
2	0.075	0.150	0.250	100	100	100	100	100	100	100

\*BASED ON UNIT WEIGHT OF 165 lb/ft<sup>3</sup> - MINIMUM UNIT WEIGHT = 150 lb/ft<sup>3</sup>

# STORM DRAIN LINE "1A"

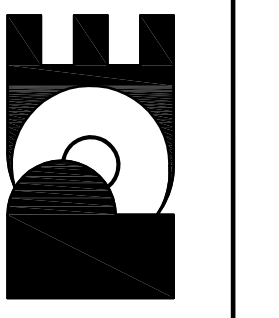


PLAN AND PROFILE  
STORM DRAIN LINE "1A"

No.	Date	By	Approved	Revision
1				

Webber Group  
Inwood Apartments

**POE & ASSOCIATES, INC.**  
CONSULTING ENGINEERS  
5940 E. Central, Suite 200 ■ Wichita, KS 67208-4242  
Phone 316/685-4114 ■ FAX 316/685-4444



Engineer: JRF  
Designer: KJW  
Poe Job No.: 1909  
Date: 8-31-07  
Sheet 5 of 20

