

SITE DATA:
 DILLON'S STORE #85
 SEC S ANDOVER RD & CLOUD AVE
 ANDOVER, KS 67002
 ZONING: "B-4" - CENTRAL BUSINESS
 PARCEL SIZE: 12.41 ACRES

NOTE:
 REPAIR ALL EXISTING PAVEMENT, CONCRETE CURB AND GUTTER, AND REPLACE SOD AND LANDSCAPING AS REQUIRED FOR UTILITY CONSTRUCTION

PICKERING FIRM INCORPORATED UNDERGROUND UTILITIES DISCLAIMER
 INFORMATION REGARDING THE REPUTED PRESENCE, SIZE, CHARACTER AND LOCATION OF EXISTING UNDERGROUND UTILITIES AND STRUCTURES RELATED TO UNDERGROUND UTILITIES IS SHOWN HEREON. THERE IS NO CERTAINTY OF THE ACCURACY OF THIS INFORMATION AND IT SHALL BE CONSIDERED BY THOSE USING THIS DRAWING. THE LOCATION AND ARRANGEMENT OF UNDERGROUND UTILITIES AND STRUCTURES RELATED TO UNDERGROUND UTILITIES SHOWN HEREON MAY BE INACCURATE AND UTILITIES AND STRUCTURES RELATED TO UNDERGROUND UTILITIES NOT SHOWN MAY BE ENCOUNTERED. THE OWNER, HIS EMPLOYEES, HIS CONSULTANTS AND HIS CONTRACTORS SHALL HEREBY DISTINCTLY UNDERSTAND THAT THE ENGINEER IS NOT RESPONSIBLE FOR THE CORRECTNESS OF SUFFICIENCY OF THIS INFORMATION REGARDING THE UNDERGROUND UTILITIES AND STRUCTURES RELATED TO UNDERGROUND UTILITIES SHOWN HEREON.

SPECIAL FLOOD HAZARD STATEMENT
 BY GRAPHICAL PLOTTING A PORTION OF THE PARCEL OF LAND DESCRIBED HEREON IS IN SHADED ZONE X (AREAS INSIDE THE 500-YEAR FLOOD) AND SHADED ZONE AE (AREAS INSIDE THE 100-YEAR FLOOD) PER THE CITY OF ANDOVER, BUTLER COUNTY, KANSAS, FLOOD INSURANCE RATE MAP (FIRM), COMMUNITY PANEL NUMBER 2003830230 D, WITH AN EFFECTIVE DATE OF SEPTEMBER 18, 2002.

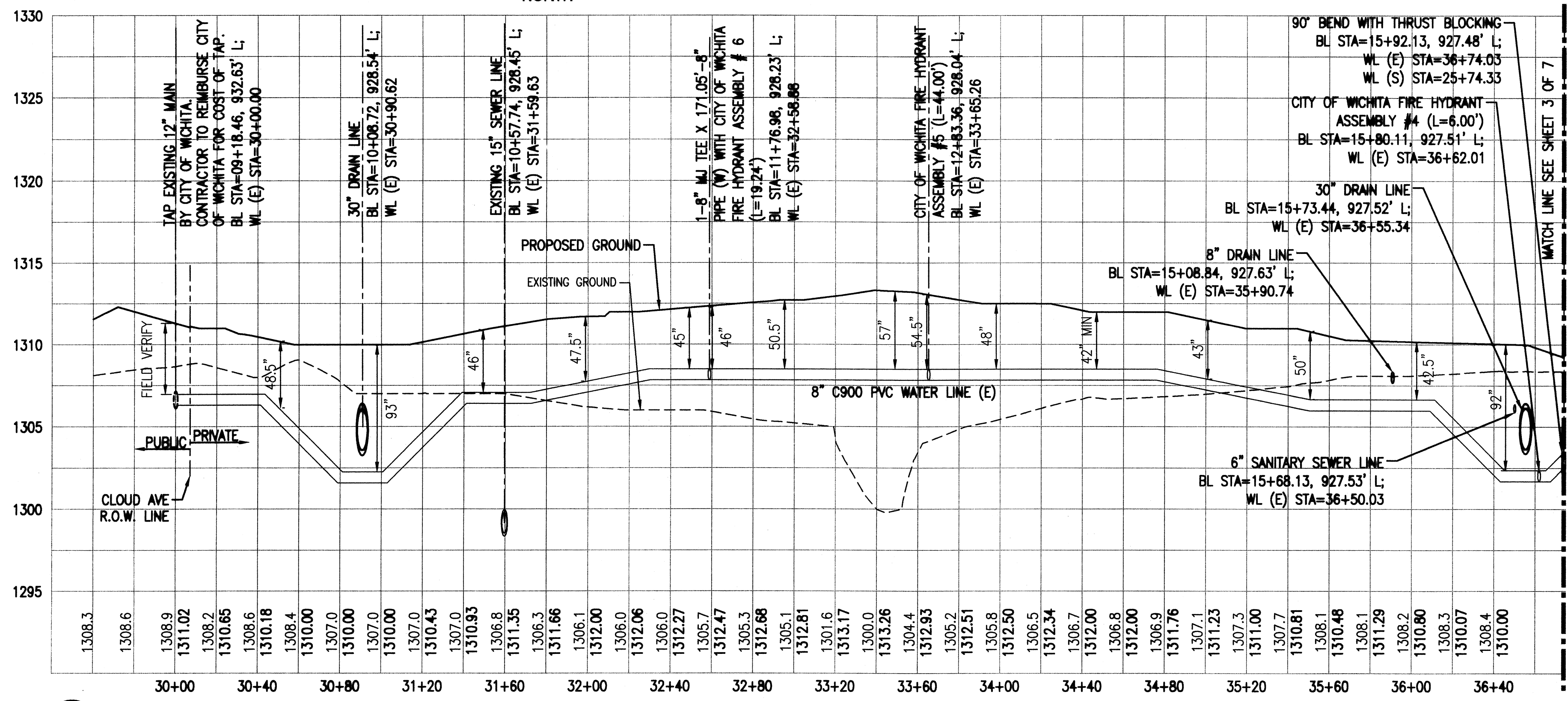
UTILITY NOTE:
 CONTRACTOR SHALL FIELD VERIFY LOCATION OF EXISTING NATURAL GAS, SANITARY SEWER, AND STORM SEWER LINES WHERE CROSSING PROPOSED WATER LINES. CONTRACTOR SHALL PROVIDE ELEVATIONS OF EXISTING UTILITIES TO THE ENGINEER TO VERIFY ADEQUATE CLEARANCE.

- WATER NOTES:**
1. ALL MATERIALS AND INSTALLATION, TESTING, DISINFECTING, AND INSPECTIONS SHALL CONFORM TO THE CITY OF WICHITA TECHNICAL SPECIFICATIONS, AND THE REQUIREMENTS OF THE STATE OF KANSAS.
 2. ALL PIPE LINES, FIRE HYDRANTS, VALVES, AND FITTINGS ARE TO BE BLOCKED WITH CONCRETE THRUST BLOCKS IN ACCORDANCE WITH CITY OF WICHITA STANDARD DETAILS.
 3. WATER LINES, VALVES, FITTINGS AND HYDRANTS SHALL BE INSTALLED, DISINFECTED, PRESSURE TESTED AND LEAKAGE TESTED IN ACCORDANCE WITH ALL STATE AND LOCAL REQUIREMENTS.
 4. WATER LINES SHALL BE INSTALLED WITH A MINIMUM HORIZONTAL AND VERTICAL CLEARANCE FROM SANITARY SEWER LINES AS REQUIRED BY THE CITY OF WICHITA.
 5. WATER LINES SHALL BE LAID TO CROSS OVER SEWER LINES. WATER MAINS SHALL BE AT LEAST 10 FEET HORIZONTALLY AND 24" VERTICALLY FROM ANY SANITARY SEWER OR SEWER MANHOLE (WATER OVER SEWER).
 6. SLEEVES FOR IRRIGATION SHALL BE INSTALLED PRIOR TO PAVING.
 7. ALL PVC PIPE SHALL BEAR THE NSF SEAL OF APPROVAL.

- WATER/SEWER SEPARATION NOTES:**
1. WATER MAINS SHALL BE LAID AT LEAST 10' HORIZONTALLY AND 24" VERTICALLY FROM ANY SEWER OR MANHOLE (WATER OVER SEWER).
 2. WHERE LOCAL CONDITIONS PREVENT ADEQUATE VERTICAL SEPARATION, THE SANITARY SEWER MUST BE CONSTRUCTED OF DUCTILE IRON, PVC, OR REINFORCED CONCRETE, THE SEWER LINE MUST MEET REQUIREMENTS OF THE CITY OF WICHITA STANDARD SPECIFICATIONS, AND MUST BE PRESSURE TESTED PURSUANT TO CHAPTER VI OF THE KDHE MINIMUM STANDARD OF DESIGN OF WATER POLLUTION CONTROL FACILITIES.
 3. JOINTS IN THE SEWER PIPE SHALL BE LOCATED A MINIMUM OF 10' FROM THE INTERSECTED WATER MAIN.
 4. WHERE A WATER MAIN IS LAID BELOW THE SANITARY SEWER, REGARDLESS OF CLEAR SPACE, THE SANITARY SEWER SHALL BE REINFORCED CONCRETE ENCASED FOR A DISTANCE OF TEN FEET EACH WAY FROM THE WATER LINE CROSSING.

UTILITY NOTE:
 CONTRACTOR SHALL SUPPLY AND INSTALL ALL ITEMS AND PERFORM ALL WORK NOT COVERED BY UTILITY COMPANIES. VERIFY INSTALLATION PROCEDURE WITH UTILITY COMPANY.

1 PLAN VIEW - WATER LINE (EAST)
 1" = 40'



3 PROFILE VIEW - WATER LINE (EAST)
 1" = 40' (H); 1" = 5' (V)



Pickering Firm
 Incorporated
 Planning - Architecture - Engineering - Management

DILLONS FOOD STORE #85 BUILDING
 PROJECT NAME
 PLAN AND PROFILE - 3
 SHEET TITLE

ATP	ATP	CLM
DESIGN BY:	DRAWN BY:	CHECKED BY:
04-07-08	21047-09	4 OF 7
DATE	JOB NUMBER	SHEET