

GENERAL NOTES

- Underground utility service lines and overhead utility pole lines are to be adjusted as necessary by others prior to construction unless the plans specifically call for their adjustment by the contractor or unless the plans specifically identify a utility to be adjusted by its owner during construction. Existing utilities and their location, as shown on the plans, represent the best information obtainable for design. The Contractor will be required to work around existing utilities within the right-of-way which do not conflict with proposed construction.
- Trees and shrubs in public right-of-way which are in direct conflict with proposed new construction shall be removed by the Contractor with the Engineer's approval. Trees and shrubs which are not in direct conflict with proposed new construction shall be saved and protected from damage.
- The Contractor shall be responsible for preserving property irons. The Contractor will be required to re-establish any property irons which are damaged or destroyed by his construction operations. Such irons shall be re-established by a licensed land surveyor in accordance with state laws.
- Contractor will be required to provide notice to utility companies a minimum of twenty-four (24) hours prior to any excavation, as follows:

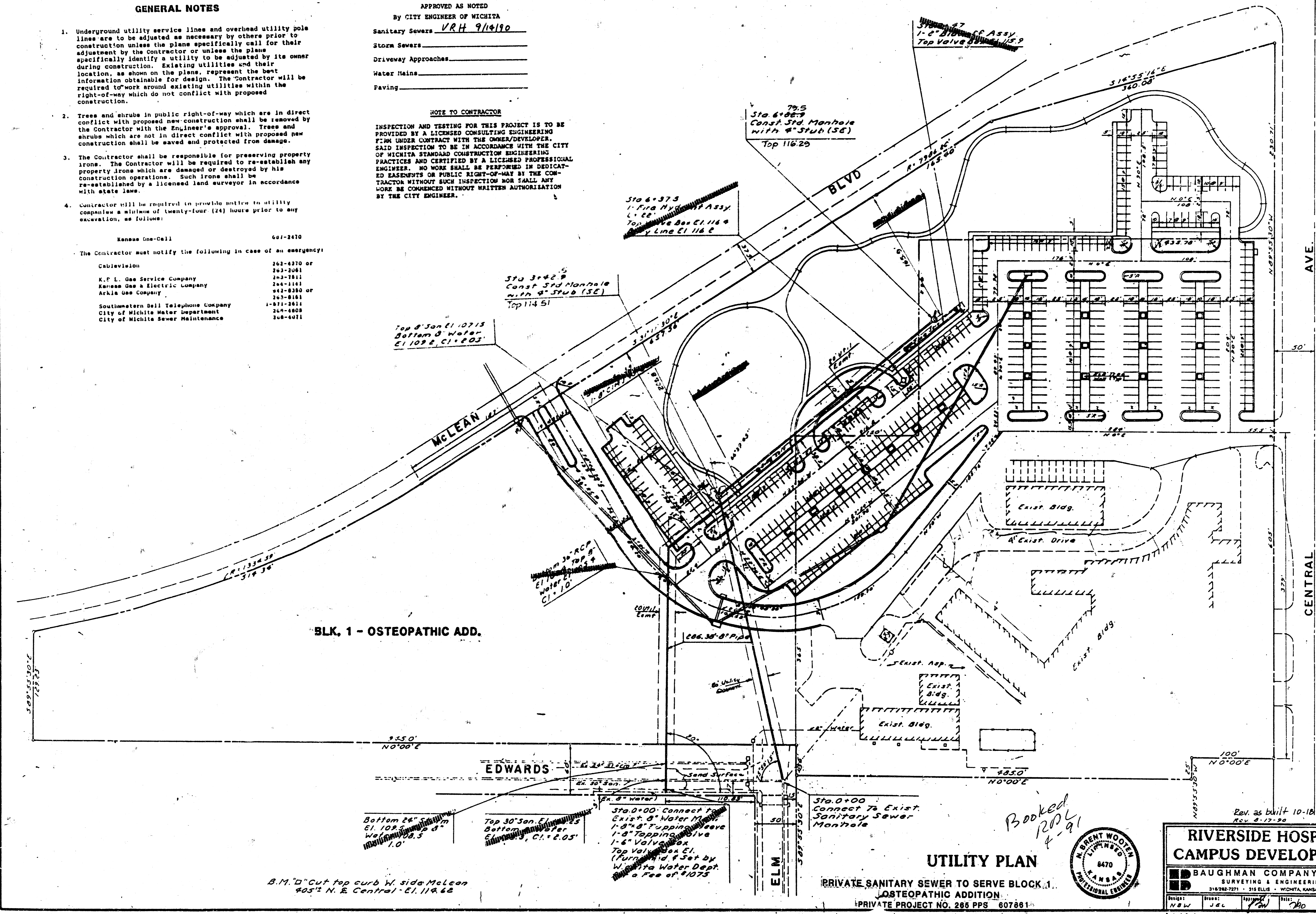
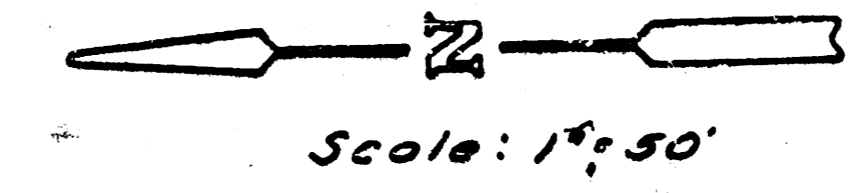
Kansas One-Call 601-2470

The Contractor must notify the following in case of an emergency:

Cablevision	363-4370 or 363-2061
K. P. L. Gas Service Company	263-7811
Kansas Gas & Electric Company	264-1161
Arkia Gas Company	441-8310 or 363-8161
Southeastern Bell Telephone Company	1-877-2611
City of Wichita Water Department	264-4809
City of Wichita Sewer Maintenance	264-4011

APPROVED AS NOTED
By CITY ENGINEER OF WICHITA
Sanitary Sewers VRH 9/14/90
Storm Sewers _____
Driveway Approaches _____
Water Mains _____
Paving _____

NOTE TO CONTRACTOR
INSPECTION AND TESTING FOR THIS PROJECT IS TO BE PROVIDED BY A LICENSED CONSULTING ENGINEERING FIRM UNDER CONTRACT WITH THE OWNER/DEVELOPER. SAID INSPECTION TO BE IN ACCORDANCE WITH THE CITY OF WICHITA STANDARD CONSTRUCTION ENGINEERING PRACTICES AND CERTIFIED BY A LICENSED PROFESSIONAL ENGINEER. NO WORK SHALL BE PERFORMED IN DEDICATED EASEMENTS OR PUBLIC RIGHT-OF-WAY BY THE CONTRACTOR WITHOUT SUCH INSPECTION NOR SHALL ANY WORK BE COMMENCED WITHOUT WRITTEN AUTHORIZATION BY THE CITY ENGINEER.



BLK. 1 - OSTEOPATHIC ADD.

B.M. "D" Cut top curb W. side McLean
905' N. E. Central - El. 114.62

UTILITY PLAN
PRIVATE SANITARY SEWER TO SERVE BLOCK 1,
OSTEOPATHIC ADDITION.
PRIVATE PROJECT NO. 265 PPS 607881



**RIVERSIDE HOSPITAL
CAMPUS DEVELOPMENT**

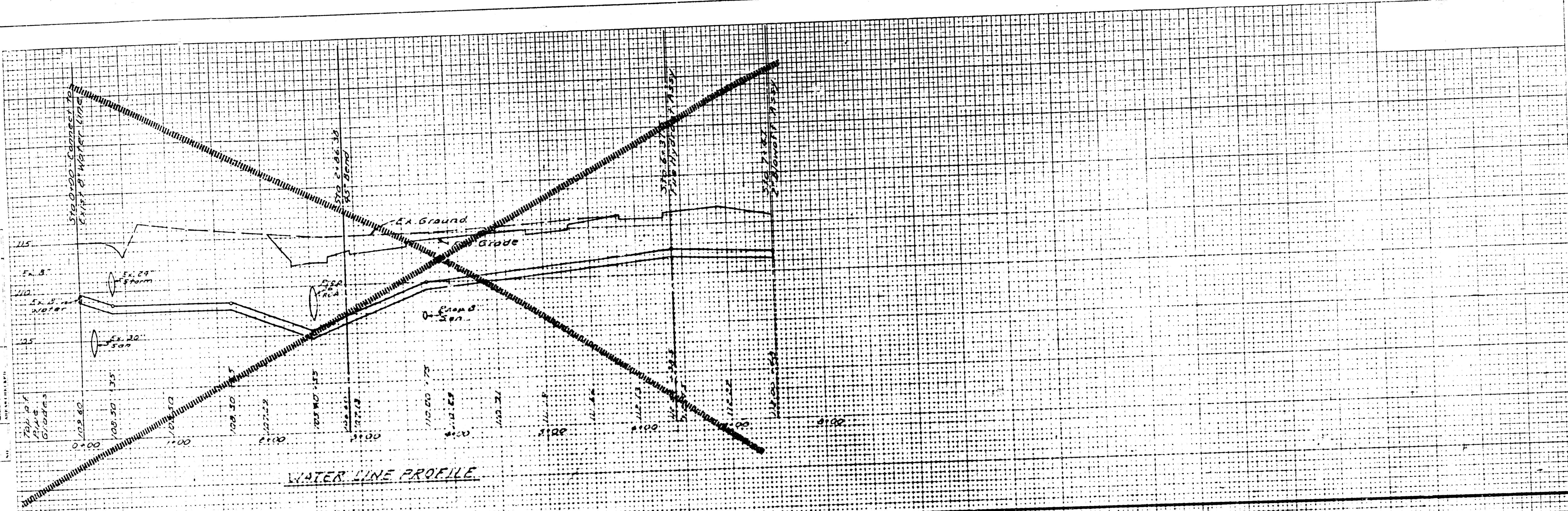
BAUGHMAN COMPANY, P.A.
SURVEYING & ENGINEERING
316-262-7271 • 316 ELLIS • WICHITA, KANSAS 67211

Rev. as built 10-18-90
Rev. 8-17-90

Booked
12/21/91
4-91

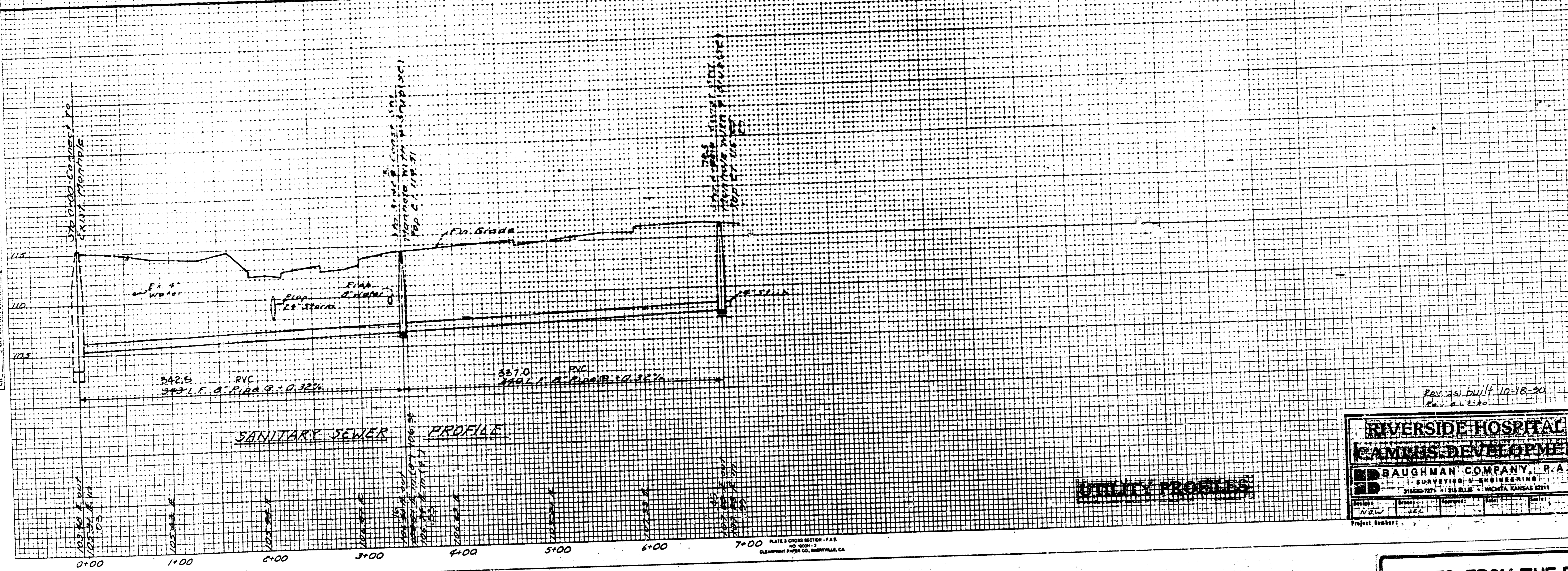
Project	Drawn	Approved	Scale	Sheet
NBW	JBL	VRH	1/4"	3
				6

DATE: _____
 DRAWN BY: _____
 CHECKED BY: _____
 PROJECT NO.: _____
 SHEET NO.: _____



WATER LINE PROFILE

ORIGINAL SURVEY
 CHECKED BY: _____
 DATE: _____



SANITARY SEWER PROFILE

UTILITY PROFILES

Riverside Hospital
 Campus Development
 BAUGHMAN COMPANY, P.A.
 SURVEYING & ENGINEERING
 31620-7271 • 316 BLDG • WICHITA, KANSAS 67211
 Project Number: _____

FILMED FROM THE BEST AVAILABLE COPY

GENERAL NOTES

- Underground utility service lines and overhead utility pole lines are to be adjusted as necessary by others prior to construction unless the plans specifically call for their adjustment by the Contractor or unless the plans specifically identify a utility to be adjusted by its owner during construction. Existing utilities and their location, as shown on the plans, represent the best information obtainable for design. The Contractor will be required to work around existing utilities within the right-of-way which do not conflict with proposed construction.
- Trees and shrubs in public right-of-way which are in direct conflict with proposed new construction shall be removed by the Contractor with the Engineer's approval. Trees and shrubs which are not in direct conflict with proposed new construction shall be saved and protected from damage.
- The Contractor shall be responsible for preserving property irons. The Contractor will be required to re-establish any property irons which are damaged or destroyed by his construction operations. Such irons shall be re-established by a licensed land surveyor in accordance with state laws.
- Contractor will be required to provide notice to utility companies a minimum of twenty-four (24) hours prior to any excavation, as follows:

Kansas One-Call 681-2470

The Contractor must notify the following in case of an emergency:

Cablevision	360-4270 or 263-2061
K.P.L. Gas Service Company	263-7511
Kansas Gas & Electric Company	264-1161
Arkia Gas Company	942-8250 or 263-8161
Southwestern Bell Telephone Company	1-571-2611
City of Wichita Water Department	268-4908
City of Wichita Sewer Maintenance	268-4071

APPROVED AS NOTED

By CITY ENGINEER OF WICHITA

Sanitary Sewers VRH 9/14/90

Storm Sewers _____

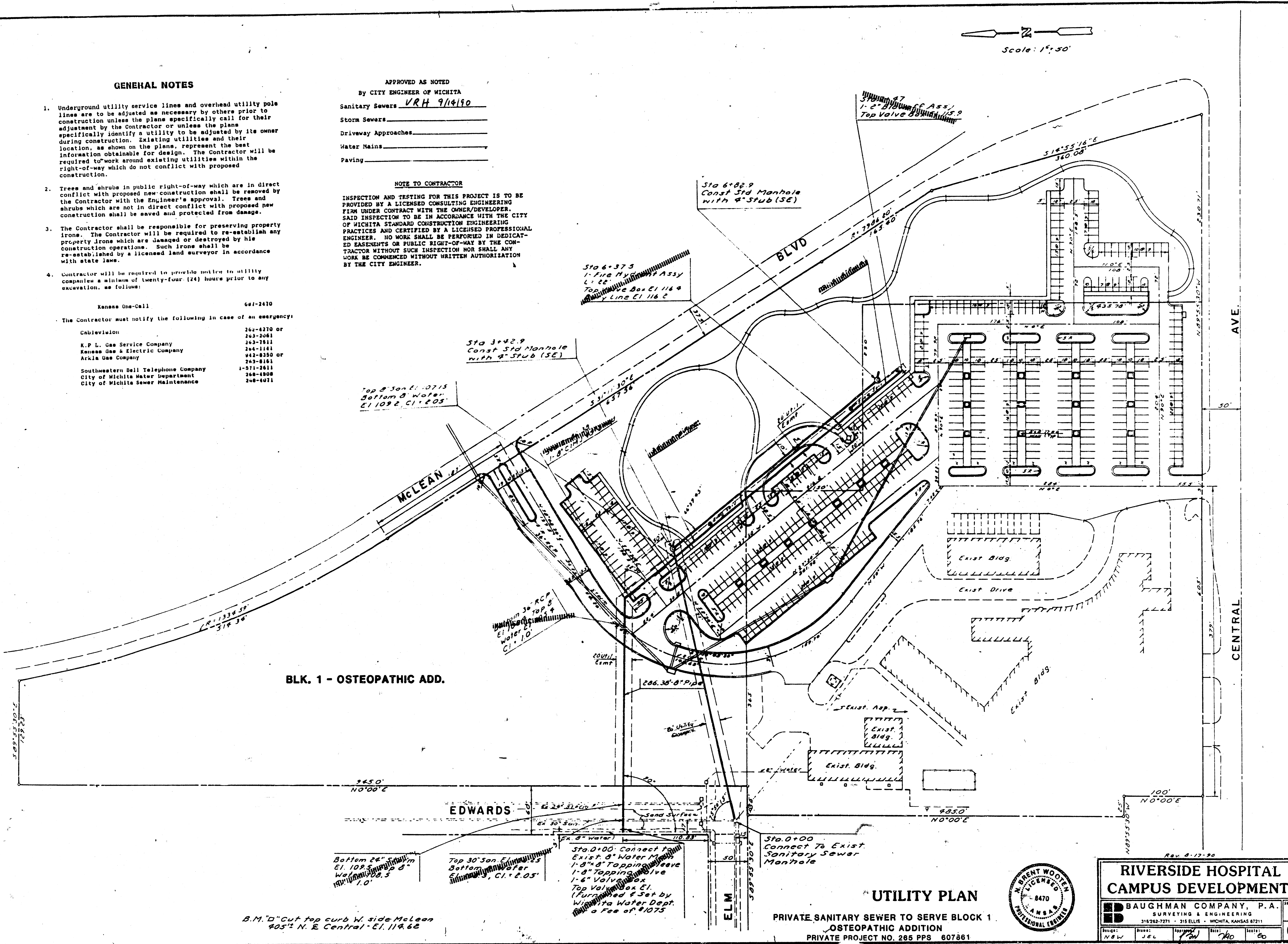
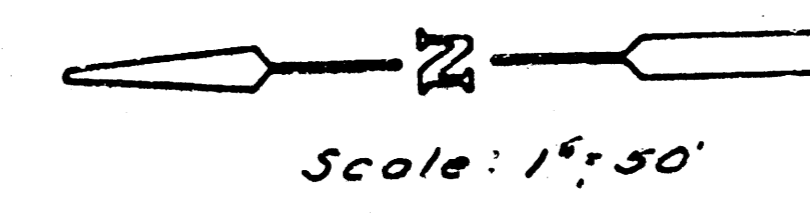
Driveway Approaches _____

Water Mains _____

Paving _____

NOTE TO CONTRACTOR

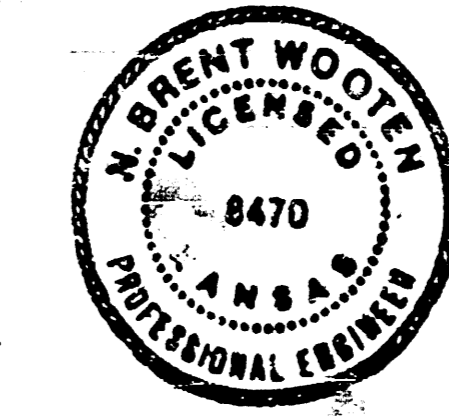
INSPECTION AND TESTING FOR THIS PROJECT IS TO BE PROVIDED BY A LICENSED CONSULTING ENGINEERING FIRM UNDER CONTRACT WITH THE OWNER/DEVELOPER. SAID INSPECTION TO BE IN ACCORDANCE WITH THE CITY OF WICHITA STANDARD CONSTRUCTION ENGINEERING PRACTICES AND CERTIFIED BY A LICENSED PROFESSIONAL ENGINEER. NO WORK SHALL BE PERFORMED IN DEDICATED EASEMENTS OR PUBLIC RIGHT-OF-WAY BY THE CONTRACTOR WITHOUT SUCH INSPECTION NOR SHALL ANY WORK BE COMMENCED WITHOUT WRITTEN AUTHORIZATION BY THE CITY ENGINEER.



BLK. 1 - OSTEOPATHIC ADD.

UTILITY PLAN

PRIVATE SANITARY SEWER TO SERVE BLOCK 1
OSTEOPATHIC ADDITION
PRIVATE PROJECT NO. 265 PPS 607861



Rev. 9-17-90

**RIVERSIDE HOSPITAL
CAMPUS DEVELOPMENT**

BAUGHMAN COMPANY, P.A.
SURVEYING & ENGINEERING
315 262-7271 • 315 ELLIS • WICHITA, KANSAS 67211

Drawn: JEL
Checked: JEL
Title: No
Date: 90

Sheet: 3 of 6

FILMED FROM THE BEST

