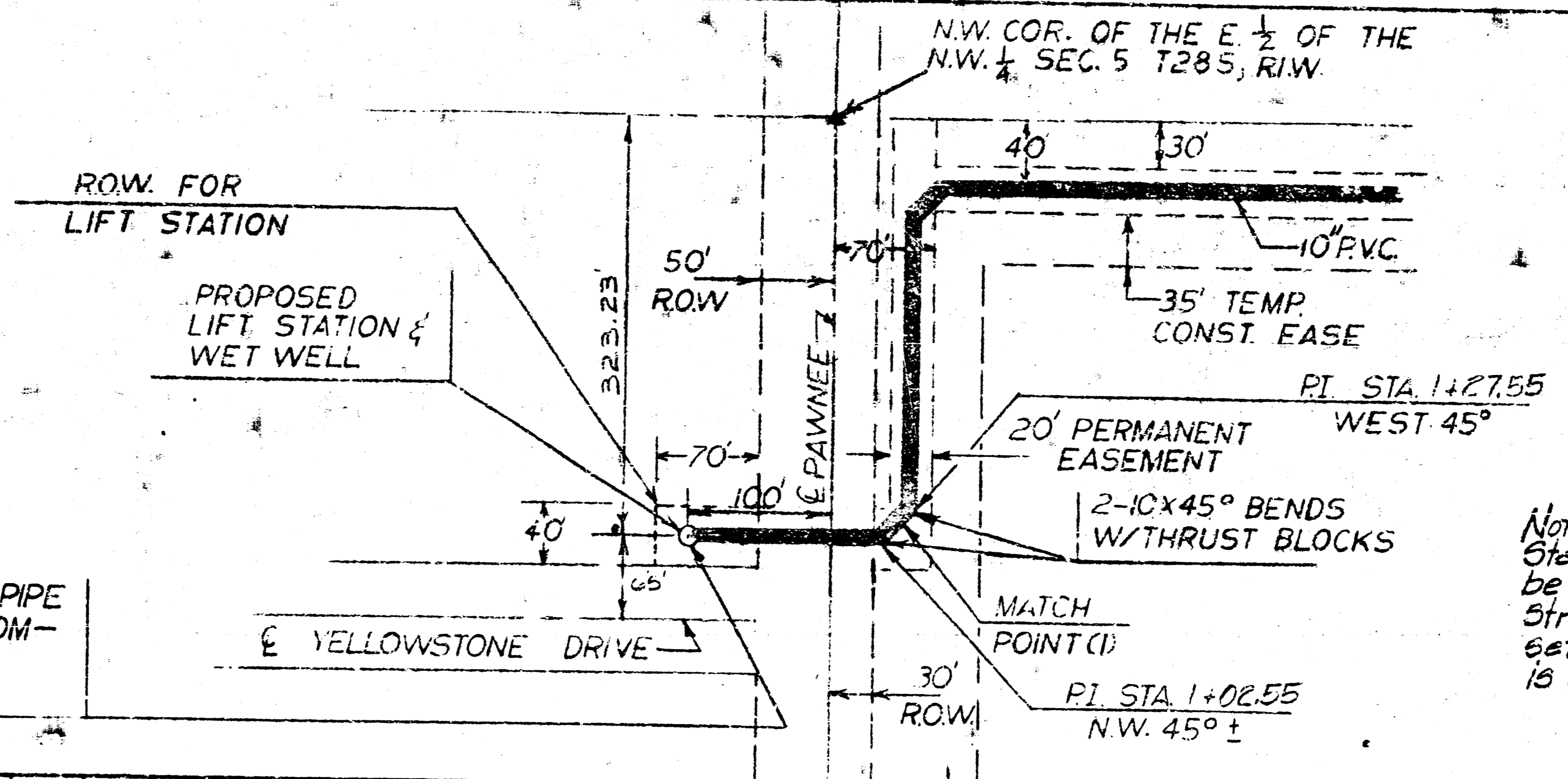


NOTE: CONST. 6" CONCRETE SLAB AROUND LIFT STATION A MINIMUM OF 10' EACH DIRECTION FROM "WET WELL" ELEV. OF SLAB AT WET WELL TO BE 6" ABOVE PROPOSED WALK ELEV. ON YELLOWSTONE DRIVE. TOP OF WET WELL TO BE 6" ABOVE TOP OF SLAB. SLAB TO EXTEND TO WEST R/W LINE OF YELLOWSTONE DRIVE. DOORWAY TO BE SET FACING YELLOWSTONE DRIVE.

INSTALL 8" ABS. COMPOSITE PIPE STUB SOUTH AND 10" ABS. COMPOSITE PIPE EAST OUT OF WET WELL MANHOLE

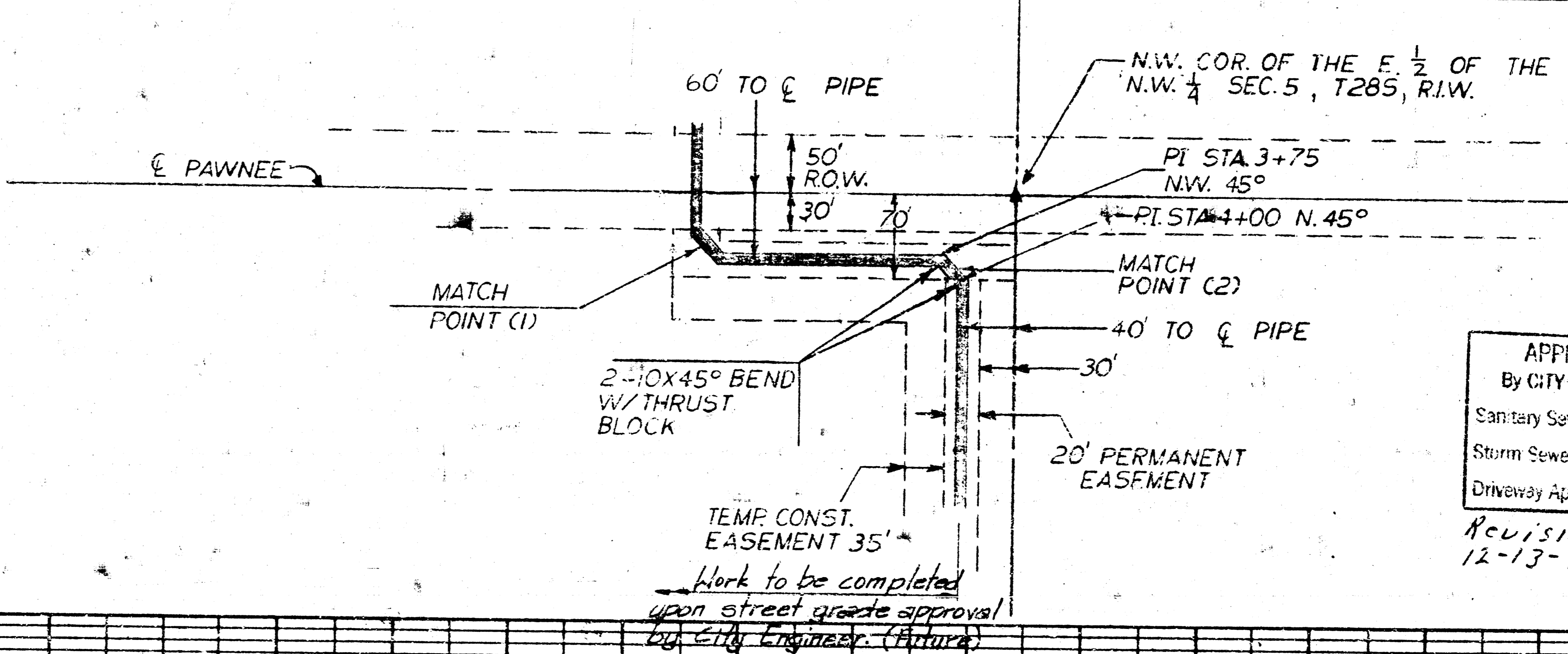
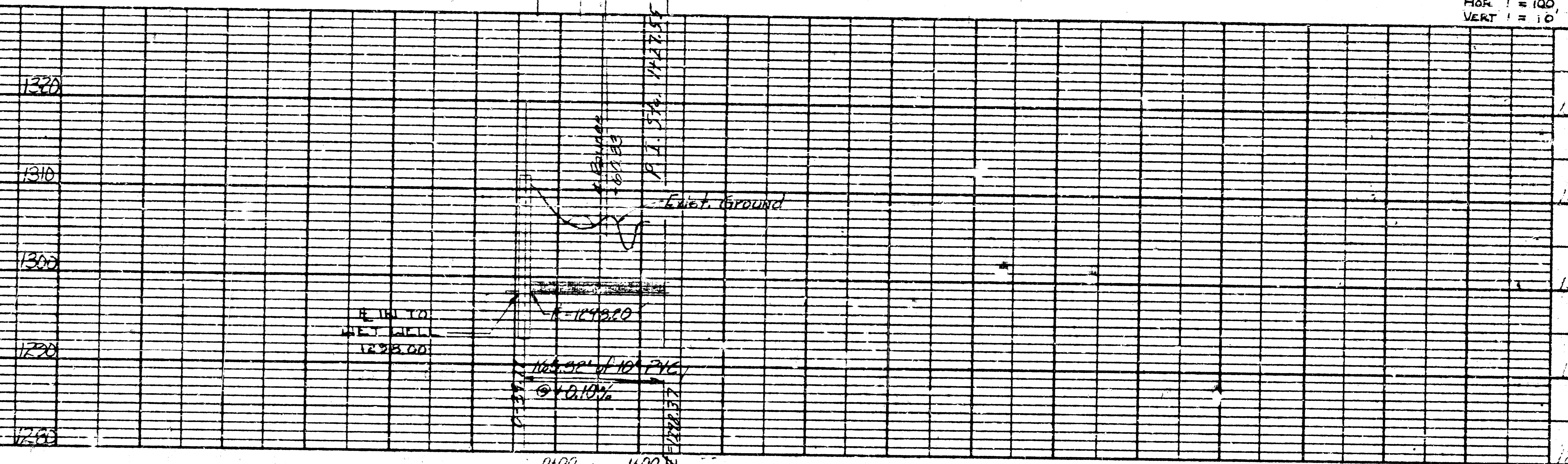


NOTE: P.V.C. FORCE MAIN TO BEGIN 5' NORTH OF WET WELL. FLANGE ADAPTER REQUIRED FOR CAST IRON DISCHARGE FROM WET WELL.

10" PVC SHALL BE 160 P.S.I. SDR 26.

Note: Force Main from Sta. 0+39.77 to 4+00 to be installed after Pawnee Street grades have been set and when Lift Station is installed.

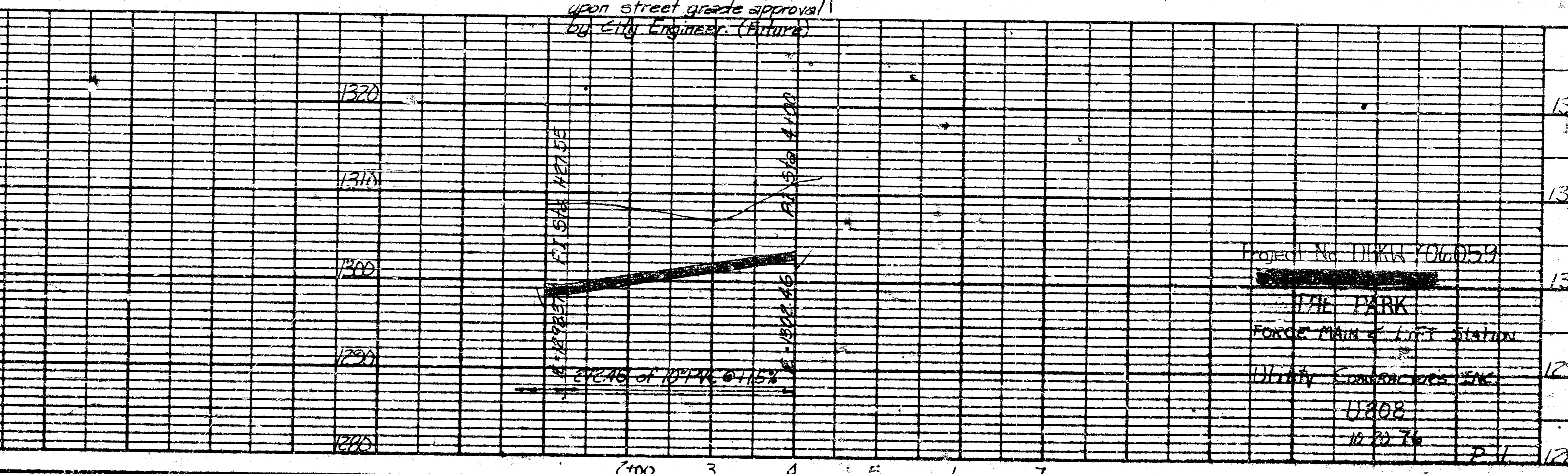
Hor. 1" = 100'
Vert. 1" = 10'



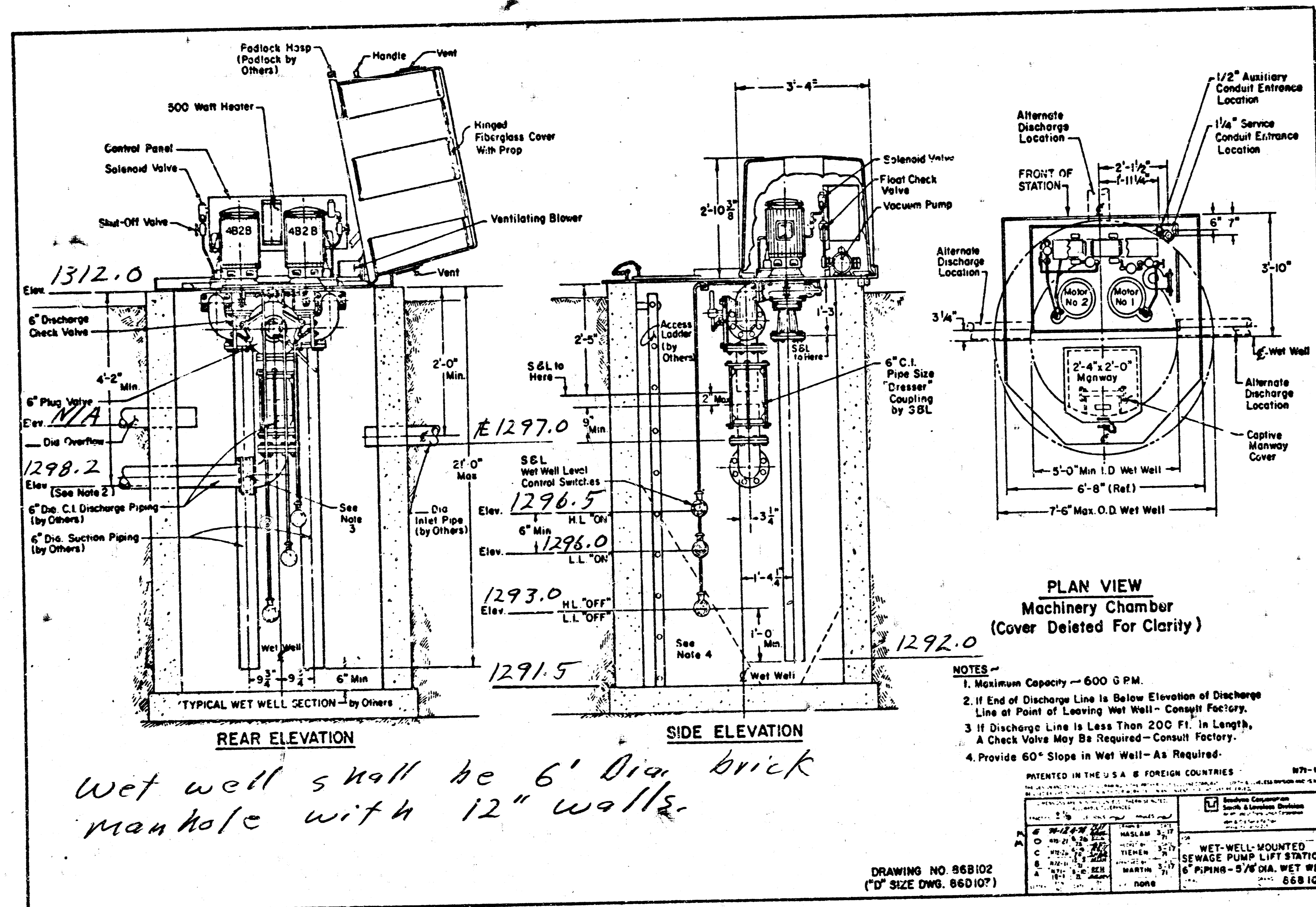
NOTE TO BE ADHERED TO: This project will be constructed under the supervision of the City Engineer. The contractor shall be responsible for obtaining all necessary permits for all construction work.

11-22-76
APPROVED AS NOTED
By CITY ENGINEER OF MICHITA
Sanitary Sewers: D.E.S.
Storm Sewers: _____
Driveway Approaches: _____
Revisions Approved
12-13-76 D.E.S.

Hor. 1" = 100'
Vert. 1" = 10'



Project No. DUKUS 7060059
MIL PARK
FORCE MAIN & LIFT STATION
Utility Construction
12/20/76
P.V.



Wet well shall be 6' Dia brick manhole with 12" walls.

- NOTES
1. Maximum Capacity - 600 G.P.M.
 2. If End of Discharge Line is Below Elevation of Discharge Line at Point of Leaving Wet Well - Consult Factory.
 3. If Discharge Line is Less Than 200 Ft. in Length, A Check Valve May Be Required - Consult Factory.
 4. Provide 60° Slope in Wet Well - As Required.

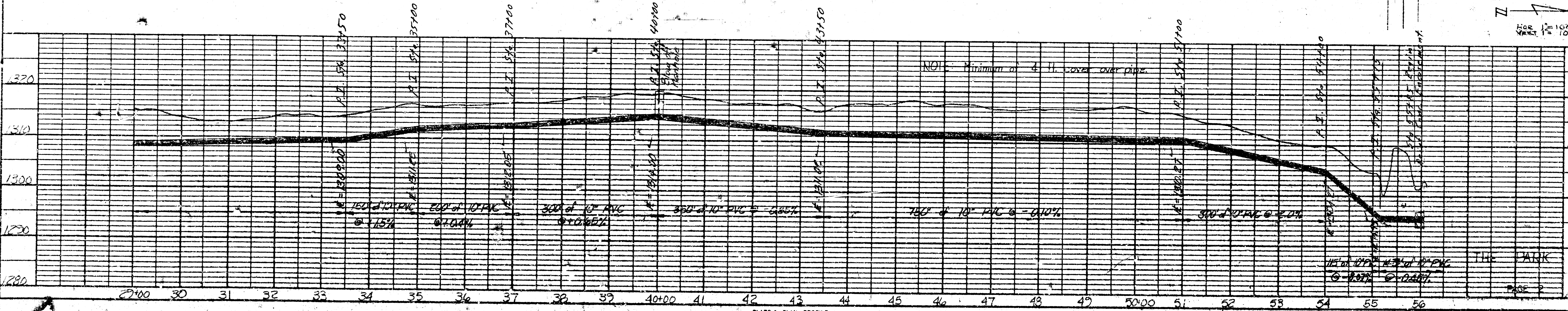
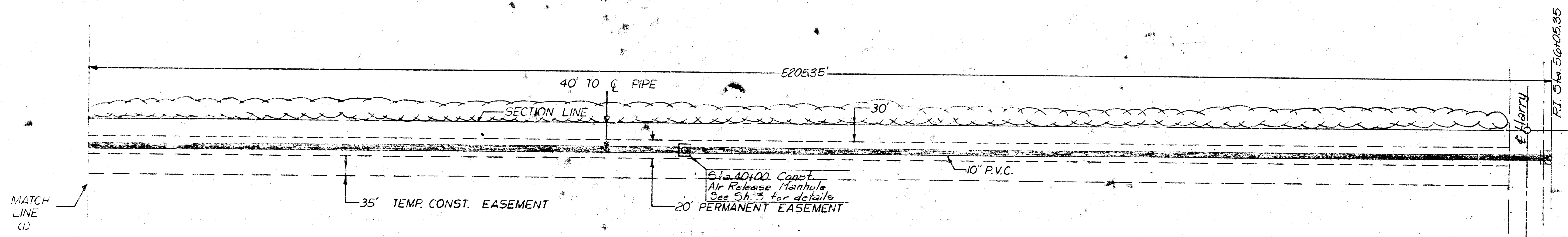
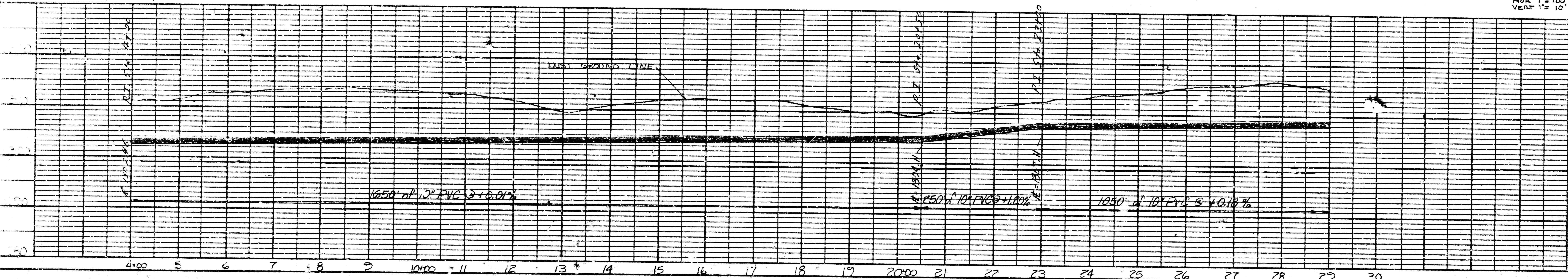
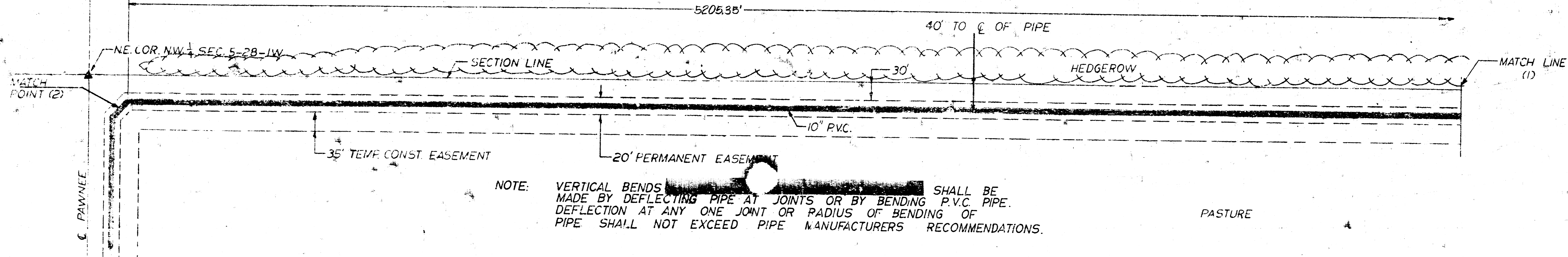
DRAWING NO 86B102
(1" SIZE DWG. 86D107)

WET-WELL MOUNTED SEWAGE PUMP LIFT STATION	
DATE	none
BY	none
CHECKED	none
DESIGNED	none
APPROVED	none

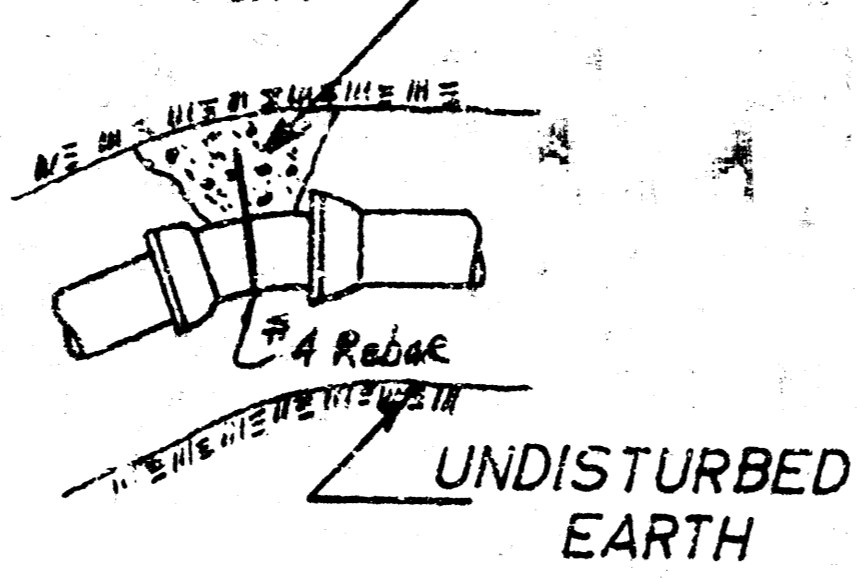
Wet Well Mounted
Outline Drawings
Page 3
January, 1975

Proj: # DBRW 706059
Lift station for The Park

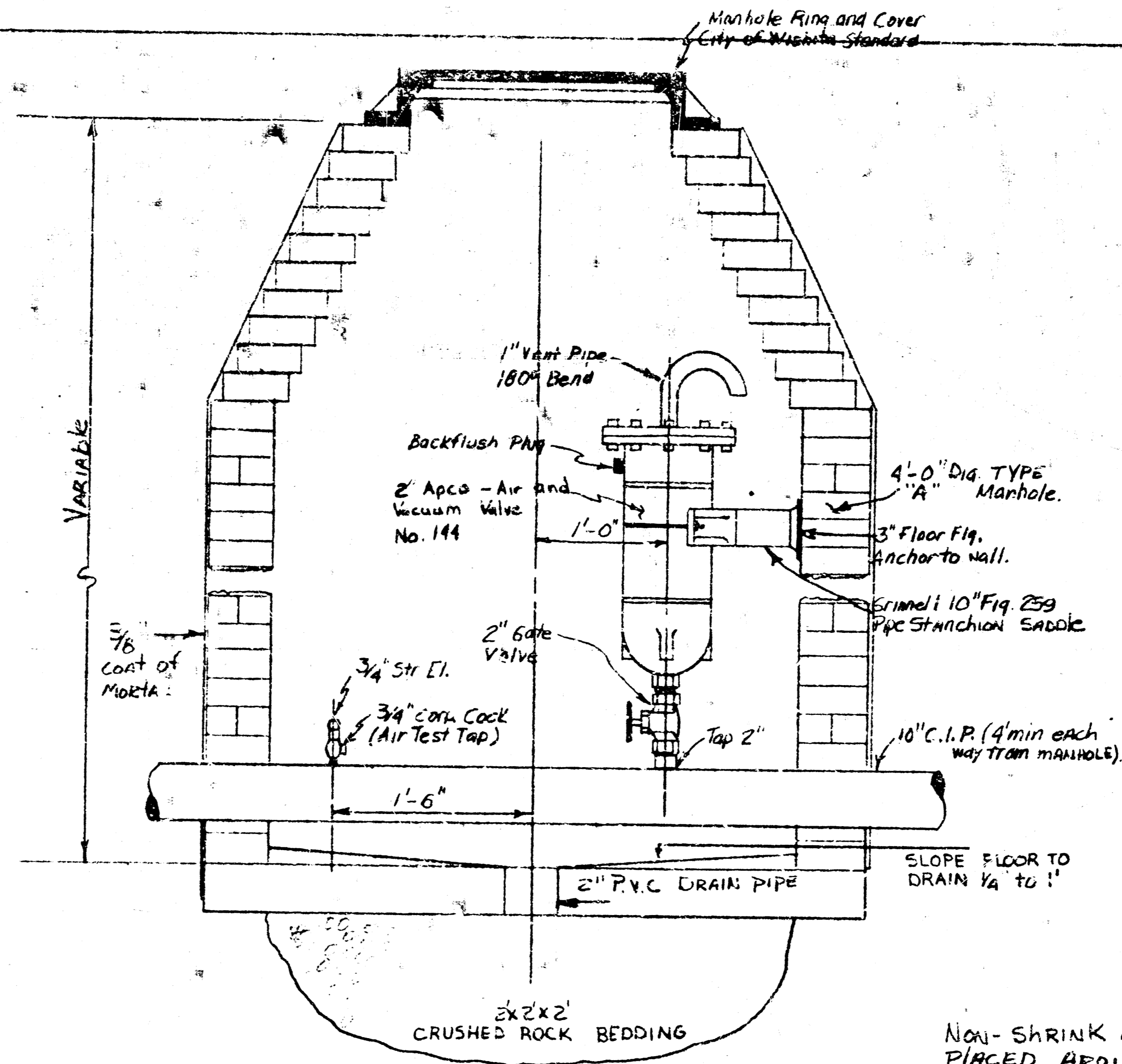
Sta. 4+00 Begin 10" Force Main, & Temp. plug line.



MIN. OF 9 SQ. FT. SURFACE AREA

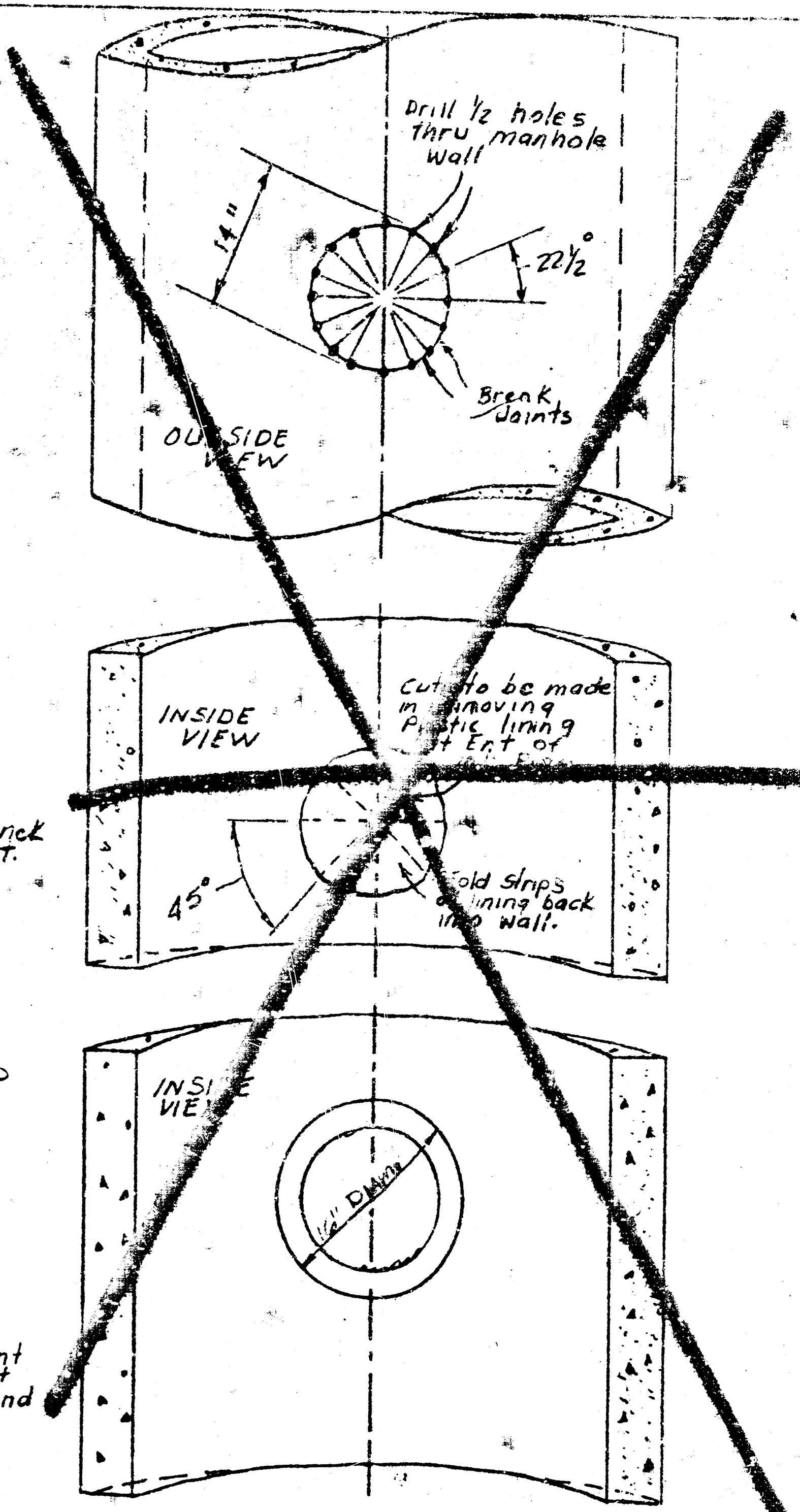


THRUST BLOCK DETAIL

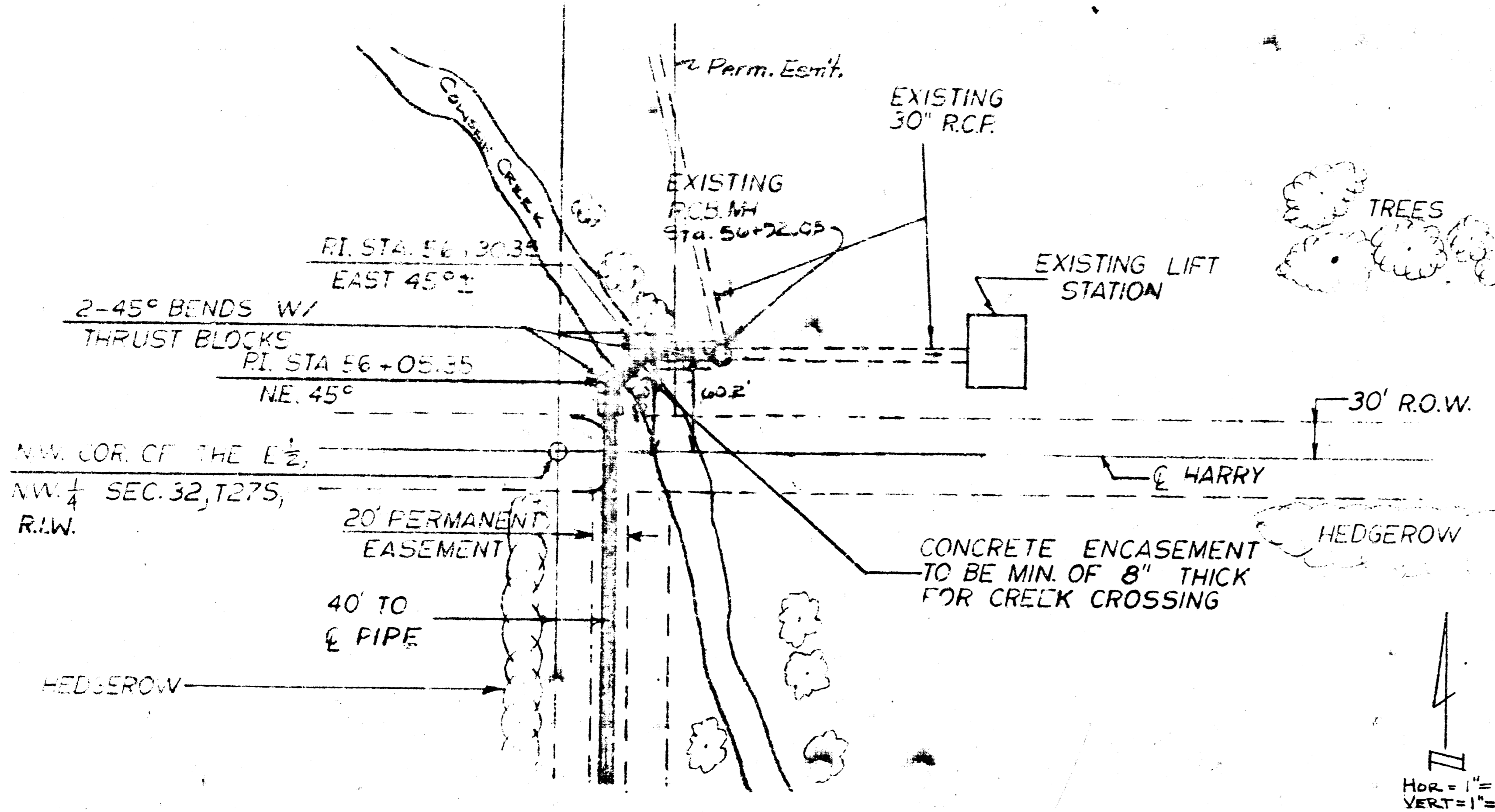


AIR-RELEASE VALVE MANHOLE NO SCALE

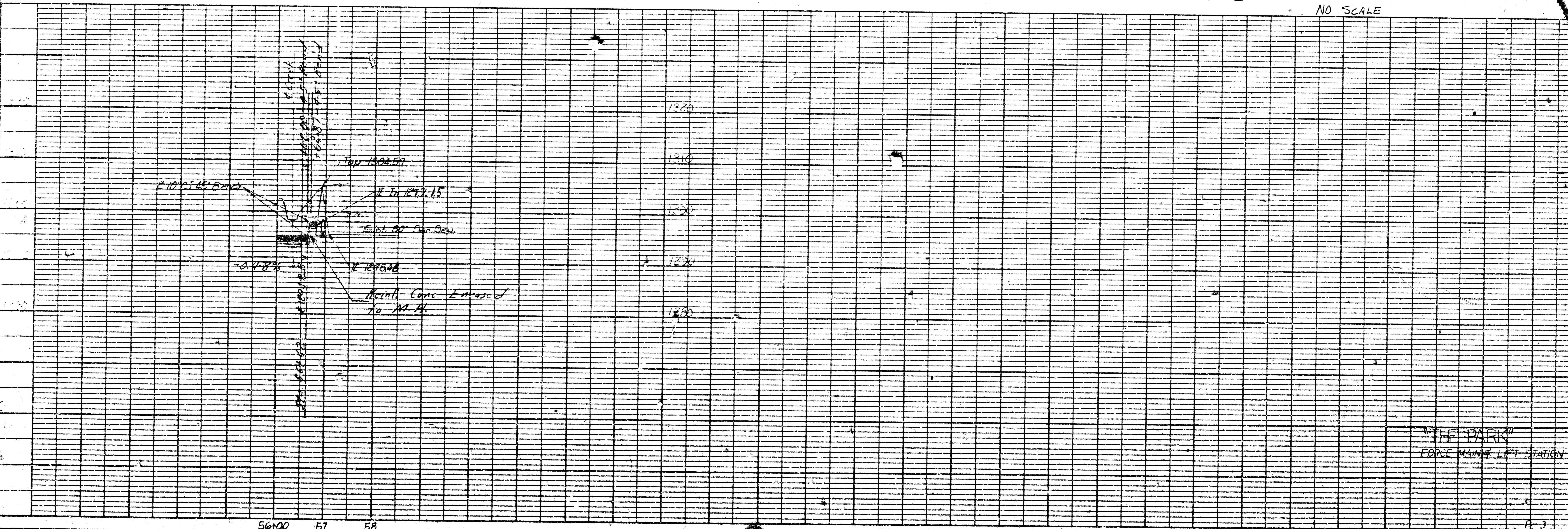
NOTE: 11 1/4° AND 45° BENDS TO BE CAST IRON WITH MECHANICAL JOINTS AND TRANSITION GASKETS. EXCEPT JOINT AT STA. 56+02.3 THIS JOINT TO BE P.V.C. OR CEMENT LINED CAST IRON.



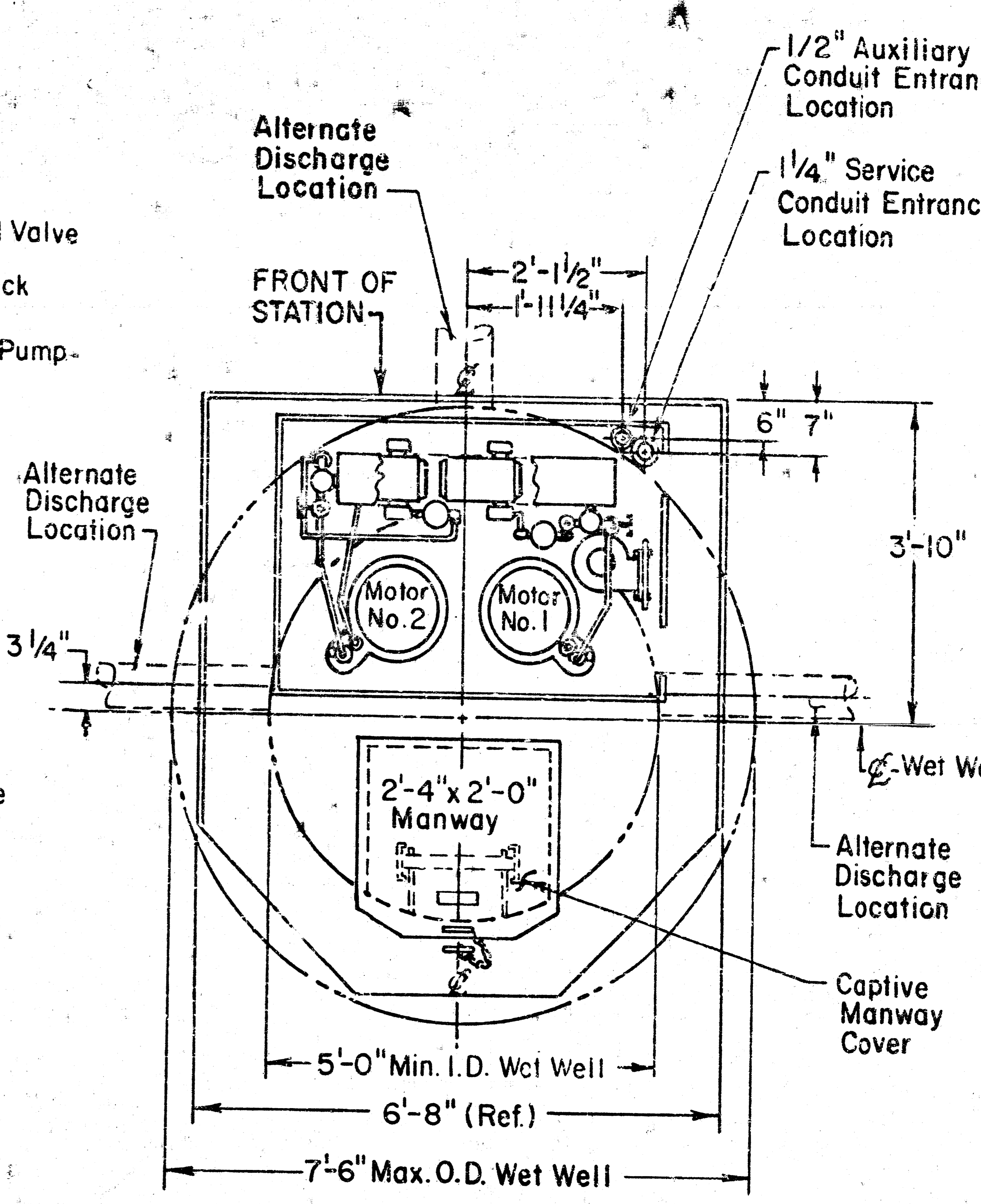
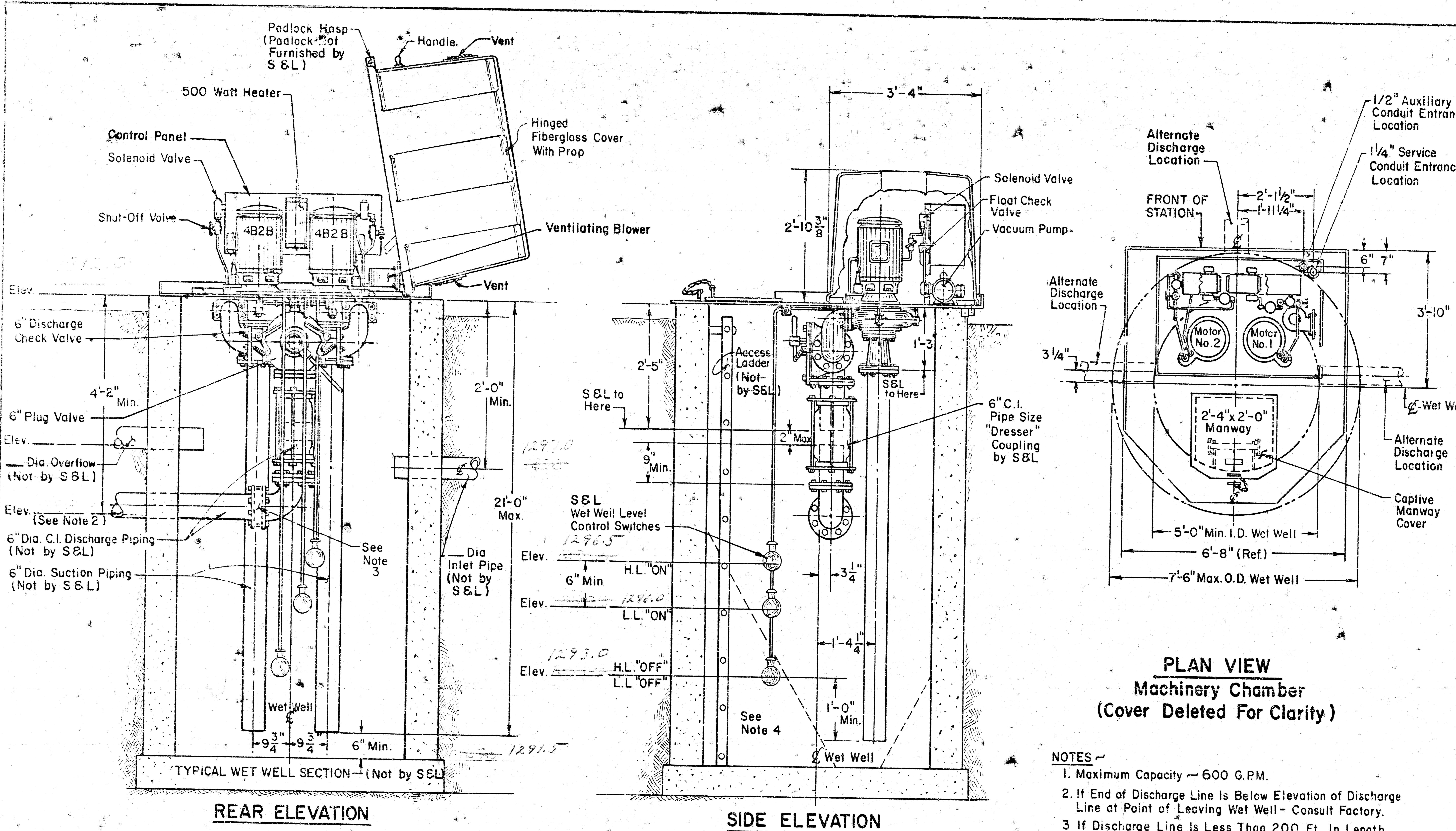
NO SCALE



Hor. = 1" = 100'
Vert. = 1" = 10'



"THE PARK"
FORCE MAINS LIFT STATION



- NOTES**
- Maximum Capacity — 600 G.P.M.
 - If End of Discharge Line Is Below Elevation of Discharge Line at Point of Leaving Wet Well — Consult Factory.
 - If Discharge Line Is Less Than 200 Ft. In Length, A Check Valve May Be Required — Consult Factory.
 - Provide 60° Slope in Wet Well — As Required.

PATENTED IN THE U.S.A. & FOREIGN COUNTRIES

THE PARK
Project No. DBKW 706059

REV	DATE	BY	CHKD
E	11-18-71	BEH	BEH
D	11-26-71	BEH	BEH
C	12-26-71	BEH	BEH
B	11-12-71	BEH	BEH
A	11-10-71	BEH	BEH

DESIGNED BY: HASLAM 3-17-71
 CHECKED BY: TIENEN 3-17-71
 APPROVED BY: MARTIN 3-17-71

SCALE: none

WEI-WELL-MOUNTED SEWAGE PUMP LIFT STATION 6" PIPING-5/8" DIA. WET WELL

86 D10

DRAWING NO. 86B102
 ("D" SIZE DWG. 86D107)