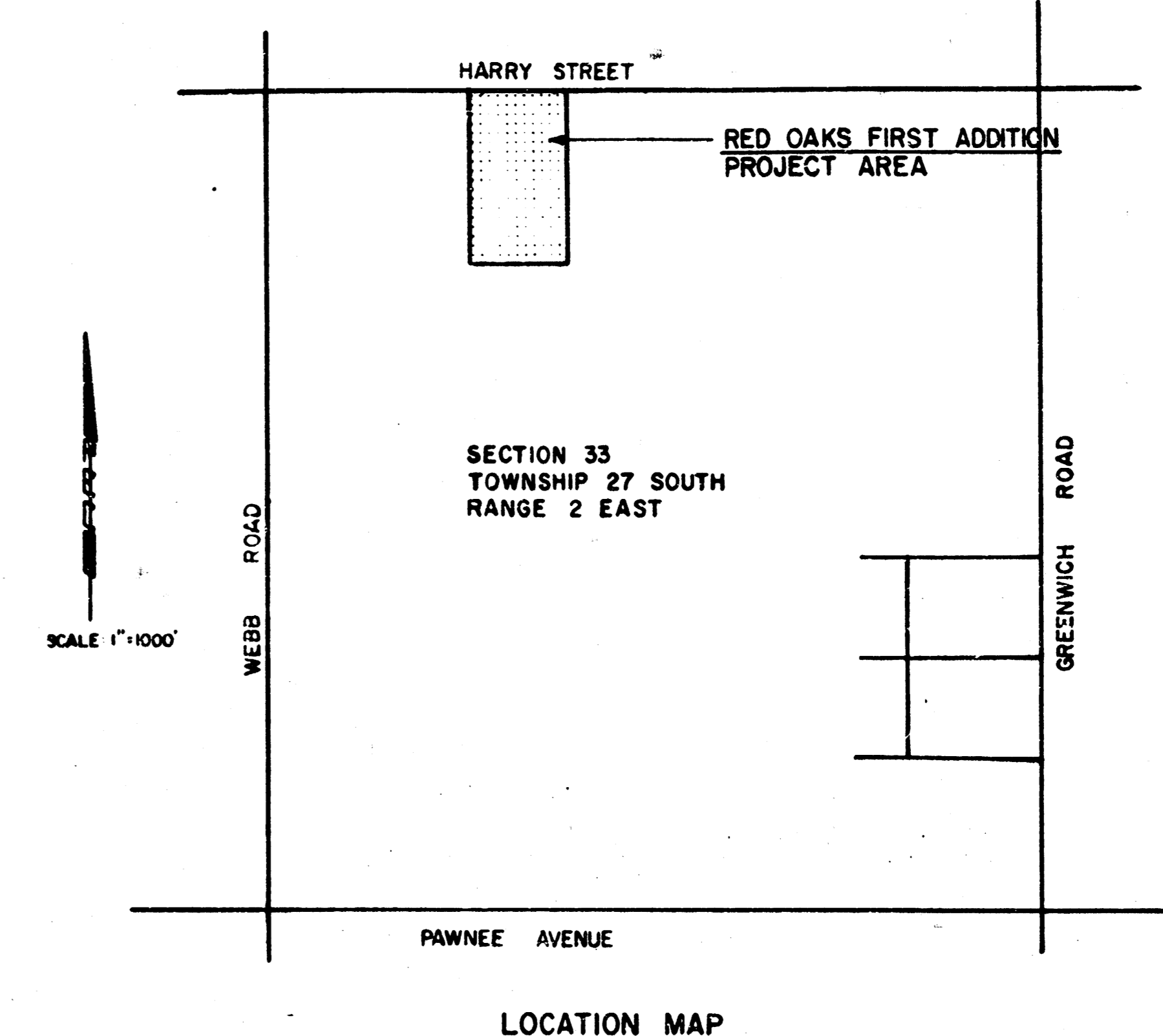
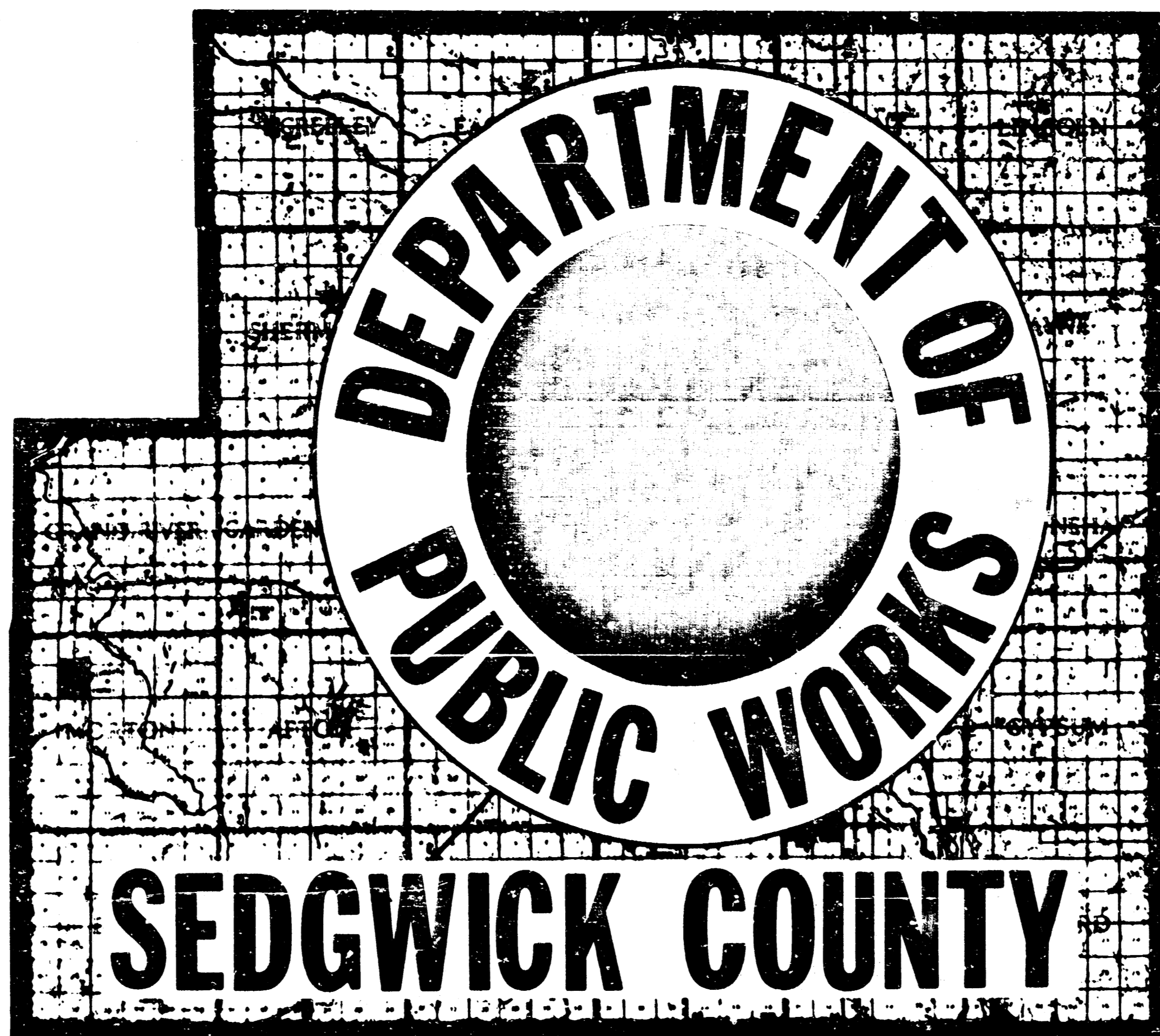


SHEET NO.	TOTAL SHEETS
1	6



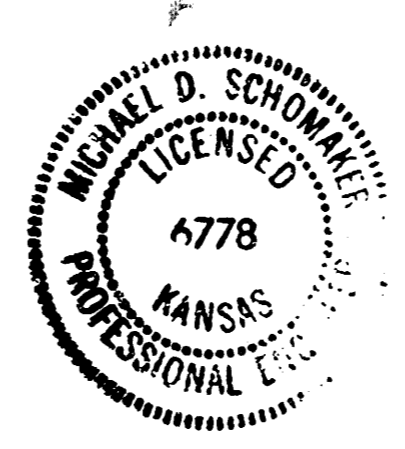
INDEX OF SHEETS

SHEET NO 1	TITLE SHEET
SHEET NO 2	KEY MAP & SCHEDULE
SHEET NOs 10, 4	SANITARY SEWER DETAILS
SHEET NOs 50, 6	PLAN PROFILES

CONSTRUCTION PLANS FOR
SANITARY SEWER IMPROVEMENTS
 IN
PARK MEADOW ESTATES LATERAL SEWER DISTRICT

SEDGWICK COUNTY, KANSAS
 PROJECT NO. 30-76496-4-024
 NOVEMBER 1978

PHASE II-A
PROFESSIONAL ENGINEERING CONSULTANTS, P.A.
ENGINEERS
WICHITA, KANSAS



APPROVED _____ DATE 12/15/78
 WICHITA SEDGWICK COUNTY
 DEPARTMENT OF COMMUNITY HEALTH

AS CONSTRUCTED
 12/21/78 PROJ. ENG. 11/27/78
 RES. ENG. _____

APPROVED _____
 CITY ENGINEER OF WICHITA, KANSAS
 DATE 12/14/78

FILED
 FILED IN THE OFFICE OF
 THE SEDGWICK COUNTY CLERK
 _____ 1-24-79
 COUNTY CLERK DATE

APPROVED _____
 COUNTY ENGINEER/DIRECTOR OF PUBLIC WORKS
 DATE 1-17-79

APPROVED 1-18-79 DATE _____

 CHAIRMAN
 BOARD OF COUNTY COMMISSIONERS

CONVENTIONAL SIGNS

WIRE FENCE	—*—*—*
HEDGE ROW	~~~~~
RAILROADS	+++++
SURVEY LINE	—3—10—
RIGHT OF WAY	—+—+—
TELEPHONE POLE	•
POWER POLE	⊕
COMB. POWER & TELEPHONE	—+—+—
TOWNSHIP LINE	—————
CONSTRUCTION LIMITS	-----
GUARD FENCE	—•—•—
TREES	⊙ ⊙

Private
FILMED FROM THE BEST AVAILABLE COPY

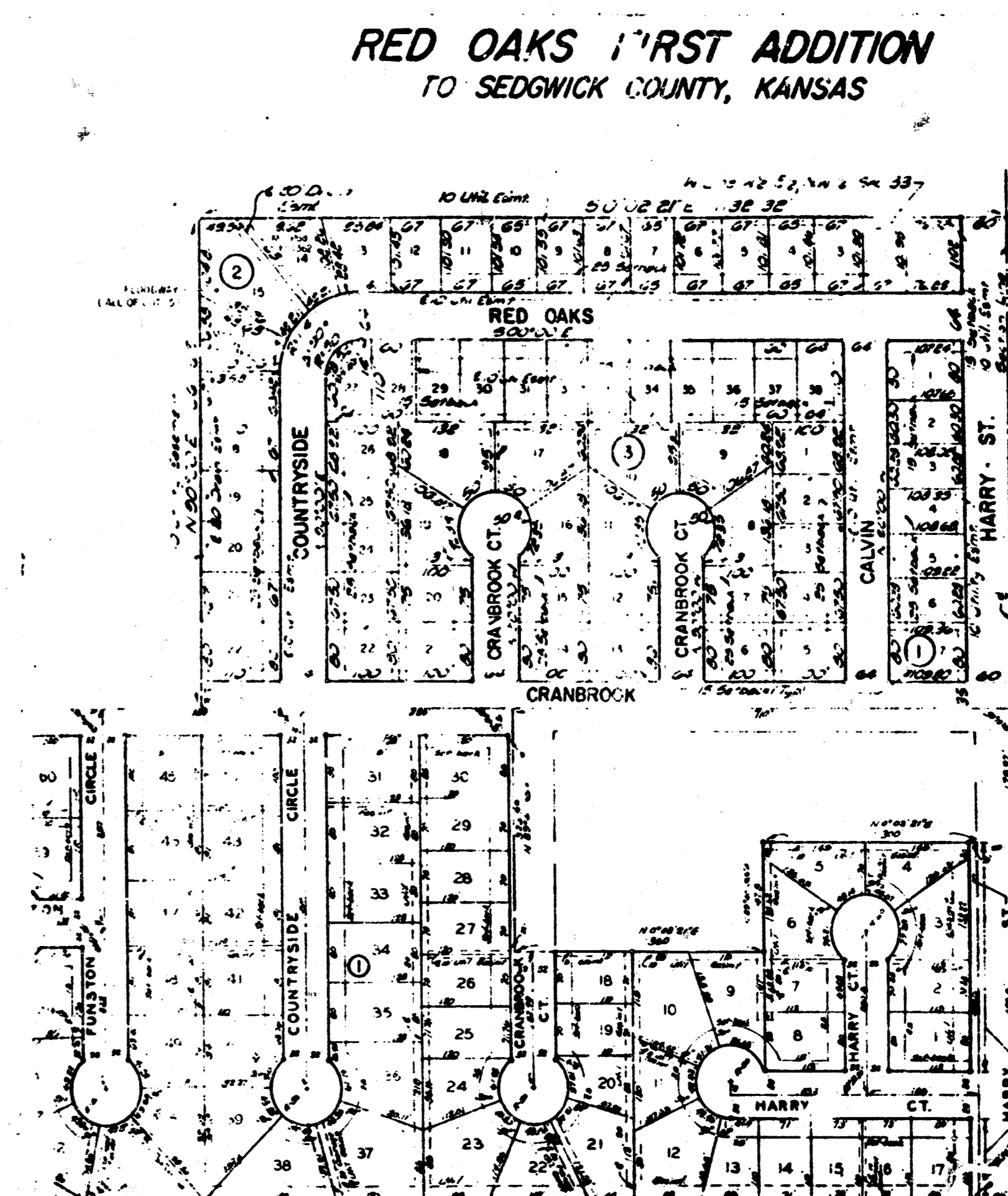
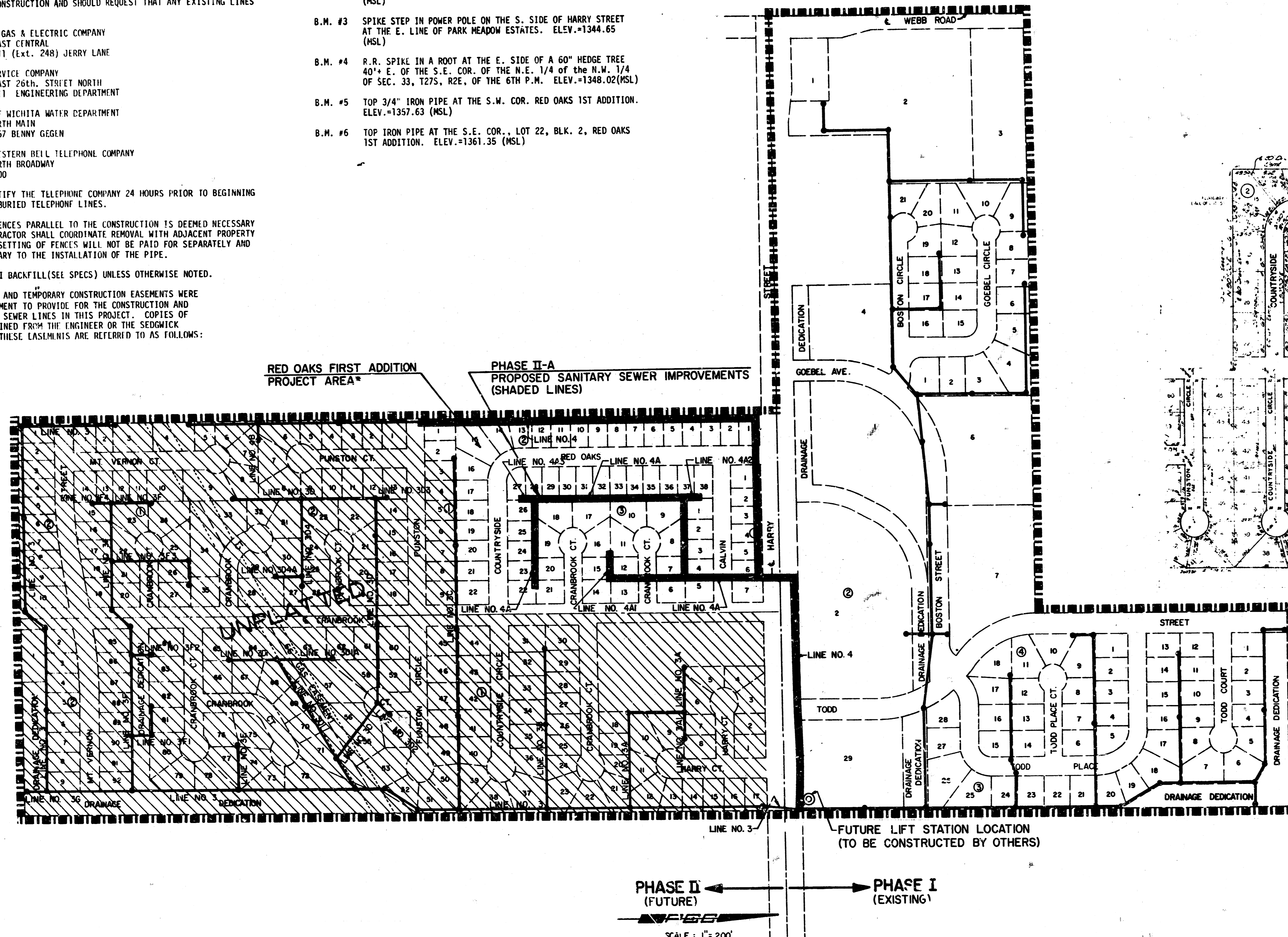
GENERAL NOTES

1. THE CONTRACTOR SHALL CONTAIN HIS OPERATIONS TO PERMIT TRAFFIC THROUGH AND ACROSS CONSTRUCTION ON HARRY STREET AT ALL TIMES. THE CONTRACTOR SHALL ERECT WARNING SIGNS, FLASHING LIGHTS, AND BARRICADES TO ENSURE SAFETY AS DIRECTED IN ARTICLE 18 OF THE GENERAL CONDITIONS. THE CONTRACTOR SHALL LIMIT THE EXTENT OF TRENCH TO REMAIN OPEN OVERNIGHTS AND WEEKENDS TO LESS THAN 50 FEET.
2. THE CONTRACTOR WILL BE REQUIRED TO NOTIFY EACH OF THE FOLLOWING UTILITY COMPANIES PRIOR TO THE BEGINNING OF CONSTRUCTION AND SHOULD REQUEST THAT ANY EXISTING LINES BE FLAGGED:
 - KANSAS GAS & ELECTRIC COMPANY
1900 EAST CENTRAL
264-1111 (Ext. 248) JERRY LANE
 - GAS SERVICE COMPANY
1021 EAST 26th STREET NORTH
263-7511 ENGINEERING DEPARTMENT
 - CITY OF WICHITA WATER DEPARTMENT
455 NORTH MAIN
268-4557 BENNY GEGEN
 - SOUTHWESTERN BELL TELEPHONE COMPANY
154 NORTH BROADWAY
262-5500
3. THE CONTRACTOR MUST ALSO NOTIFY THE TELEPHONE COMPANY 24 HOURS PRIOR TO BEGINNING ANY CONSTRUCTION WORK NEAR BURIED TELEPHONE LINES.
4. WHERE REMOVAL OF EXISTING FENCES PARALLEL TO THE CONSTRUCTION IS DEEMED NECESSARY BY THE CONTRACTOR, THE CONTRACTOR SHALL COORDINATE REMOVAL WITH ADJACENT PROPERTY OWNERS. ALL REMOVAL AND RESETTling OF FENCES WILL NOT BE PAID FOR SEPARATELY AND SHALL BE CONSIDERED SUBSIDIARY TO THE INSTALLATION OF THE PIPE.
5. ALL BACKFILL SHALL BE TYPE I BACKFILL (SEE SPECS) UNLESS OTHERWISE NOTED.
6. UNPLATTED UTILITY EASEMENTS AND TEMPORARY CONSTRUCTION EASEMENTS WERE OBTAINED BY SEPARATE INSTRUMENT TO PROVIDE FOR THE CONSTRUCTION AND MAINTENANCE FOR SOME OF THE SEWER LINES IN THIS PROJECT. COPIES OF THESE EASEMENTS MAY BE OBTAINED FROM THE ENGINEER OR THE SEDGWICK COUNTY REGISTER OF DEEDS. THESE EASEMENTS ARE REFERRED TO AS FOLLOWS:

BENCH MARK LIST

- B.M. #1 CHISELED SQUARE ON N.W. COR., R.C.B. APPROX. 1600'E. OF THE CENTERLINE OF WEBB ROAD AND HARRY STREET. ELEV.=1351.42 (MSL)
- B.M. #2 TOP IRON PIPE AT THE N.E. COR., LOT 7, BLK. 1, RED OAKS 1ST ADDITION TO SEDGWICK COUNTY, KANSAS. ELEV.=1351.30 (MSL)
- B.M. #3 SPIKE STEP IN POWER POLE ON THE S. SIDE OF HARRY STREET AT THE E. LINE OF PARK MEADOW ESTATES. ELEV.=1344.65 (MSL)
- B.M. #4 P.R. SPIKE IN A ROOT AT THE E. SIDE OF A 60" HEDGE TREE 40'± E. OF THE S.E. COR. OF THE N.E. 1/4 OF THE N.W. 1/4 OF SEC. 33, T27S, R2E, OF THE 6TH P.M. ELEV.=1348.02(MSL)
- B.M. #5 TOP 3/4" IRON PIPE AT THE S.W. COR. RED OAKS 1ST ADDITION. ELEV.=1357.63 (MSL)
- B.M. #6 TOP IRON PIPE AT THE S.E. COR., LOT 22, BLK. 2, RED OAKS 1ST ADDITION. ELEV.=1361.35 (MSL)

SEWER LINE SCHEDULE	
LINE NO.	SHEET NO.
3	5
4	5
4A	6
4A-1	6
4A-2	6
4A-3	6

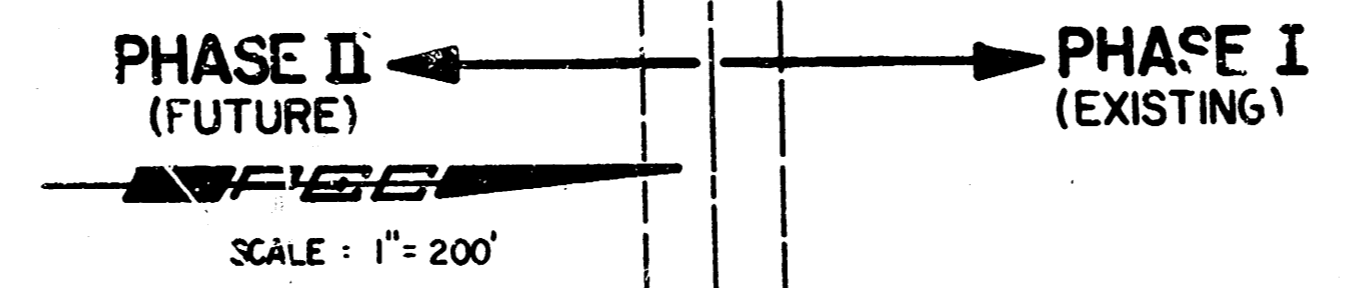


LEGEND

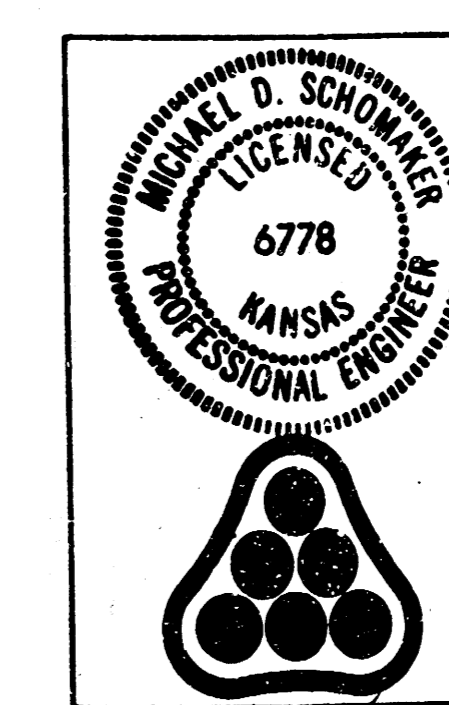
- PROPOSED IMPROVEMENTS
- ▨ PARK MEADOWS ESTATES LATERAL SEWER DISTRICT BOUNDARY
- ▨ UNPLATTED AREA AS SHOWN

AS CONSTRUCTED
 DATE: 11/21/78
 REVISION: _____

* LOTS 16 THRU 22, BLOCK 2 IN RED OAKS FIRST ADDITION, NOT SERVICED BY SEWER LINES CONSTRUCTED BY THIS PROJECT.

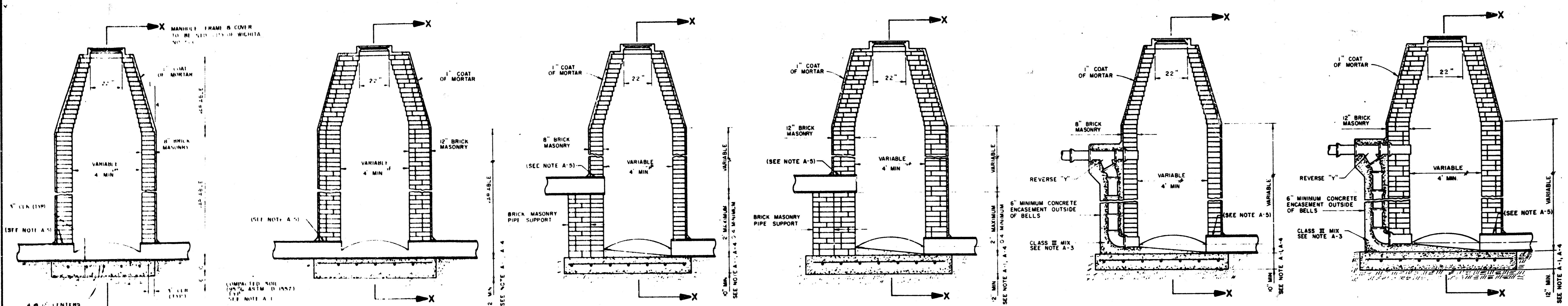


The area west of Cranbrook is currently not platted as shown. However, Easements equal to those shown have been obtained by the Sedgwick Co. Dept. of Public Works.

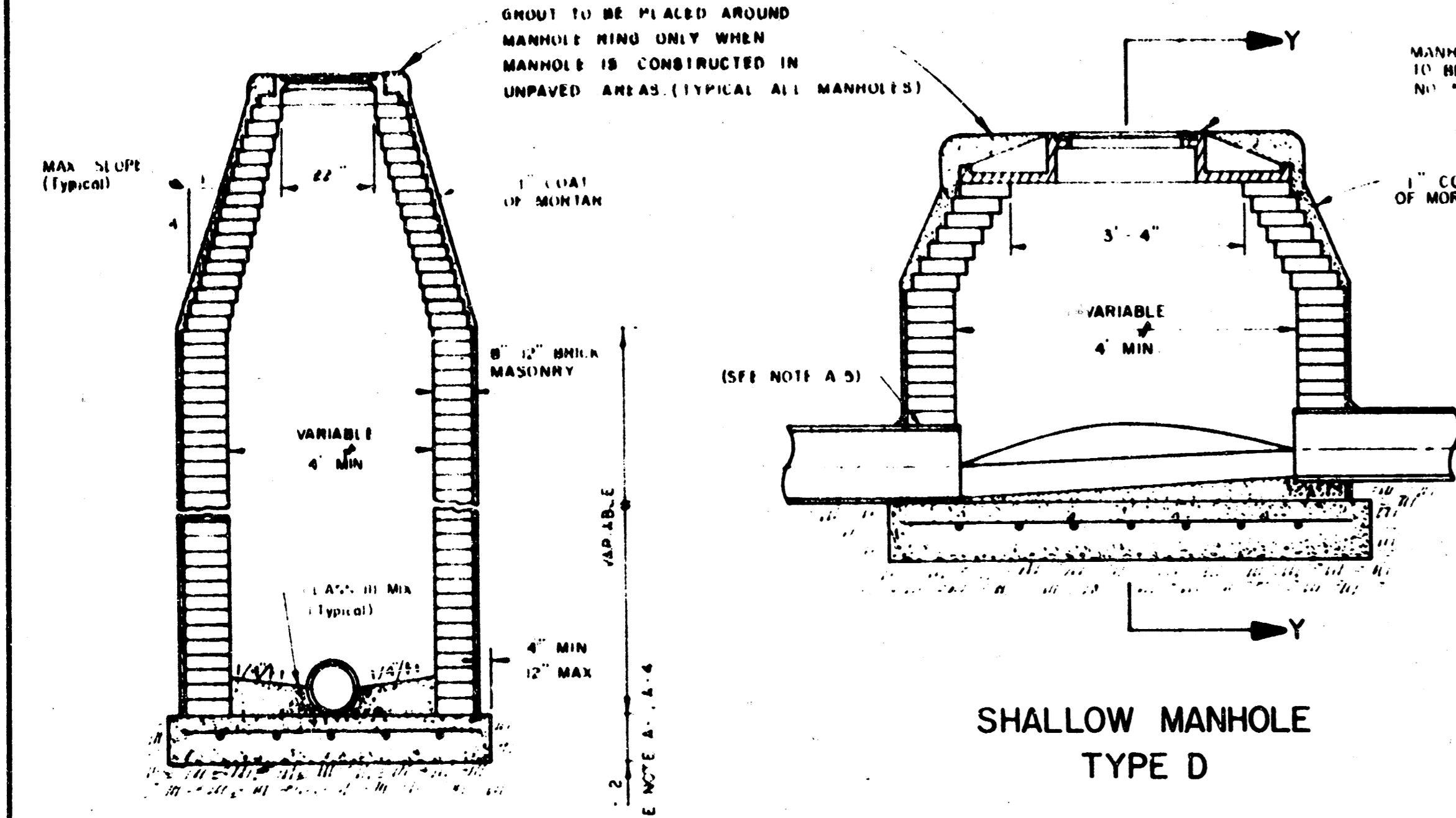


No.	Revision	By	Date
SEDGWICK COUNTY DEPARTMENT OF PUBLIC WORKS G.C. McLURE, JR., P.E. DIRECTOR & COUNTY ENGINEER			
KEY MAP & SCHEDULE			
SANITARY SEWER IMPROVEMENTS PARK MEADOW ESTATES LATERAL SEWER DISTRICT, SEDGWICK COUNTY, KANSAS			
PROFESSIONAL ENGINEERING CONSULTANTS, P.A. ENGINEERS WICHITA, KANSAS			
Designed by	MDS	Job No.	7040G
Drawn by	T.S., R.F.J.	Date	Nov, 1978
		Sht.	2 of 6

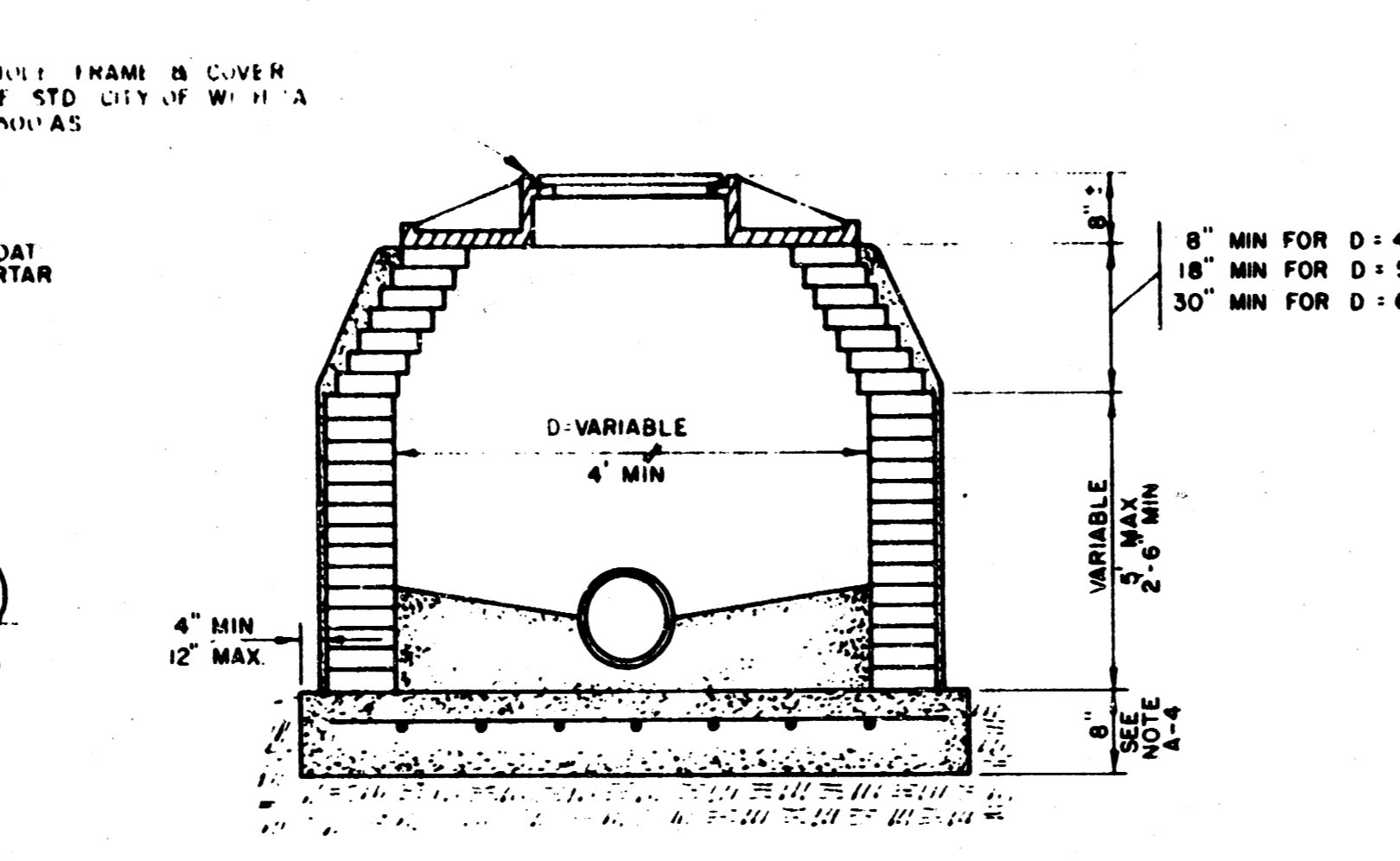
FILMED FROM THE BEST AVAILABLE COPY



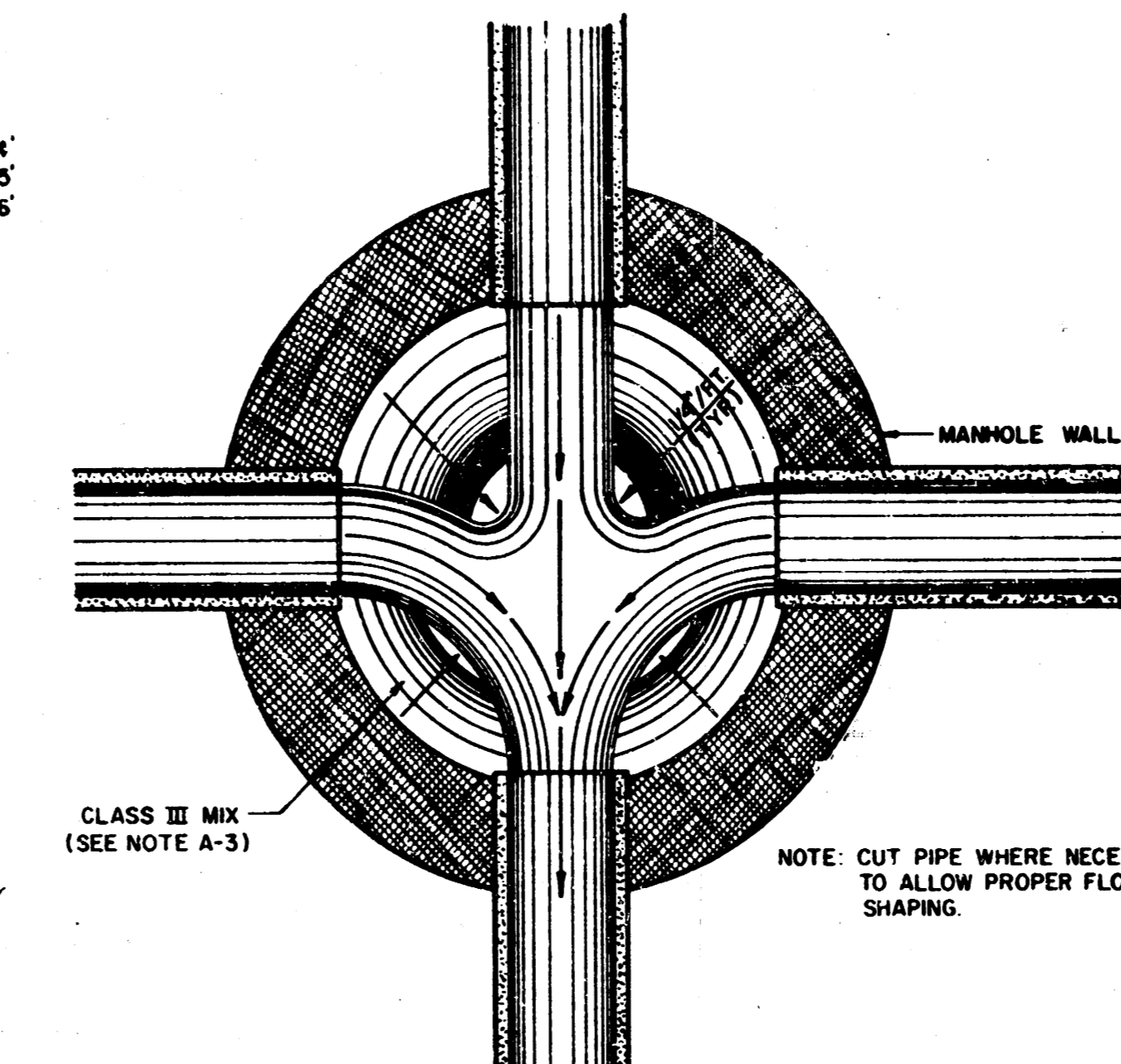
STANDARD MANHOLE TYPE A STANDARD MANHOLE TYPE AA DROP MANHOLE TYPE B DROP MANHOLE TYPE BB OUTSIDE DROP MANHOLE TYPE C OUTSIDE DROP MANHOLE TYPE CC



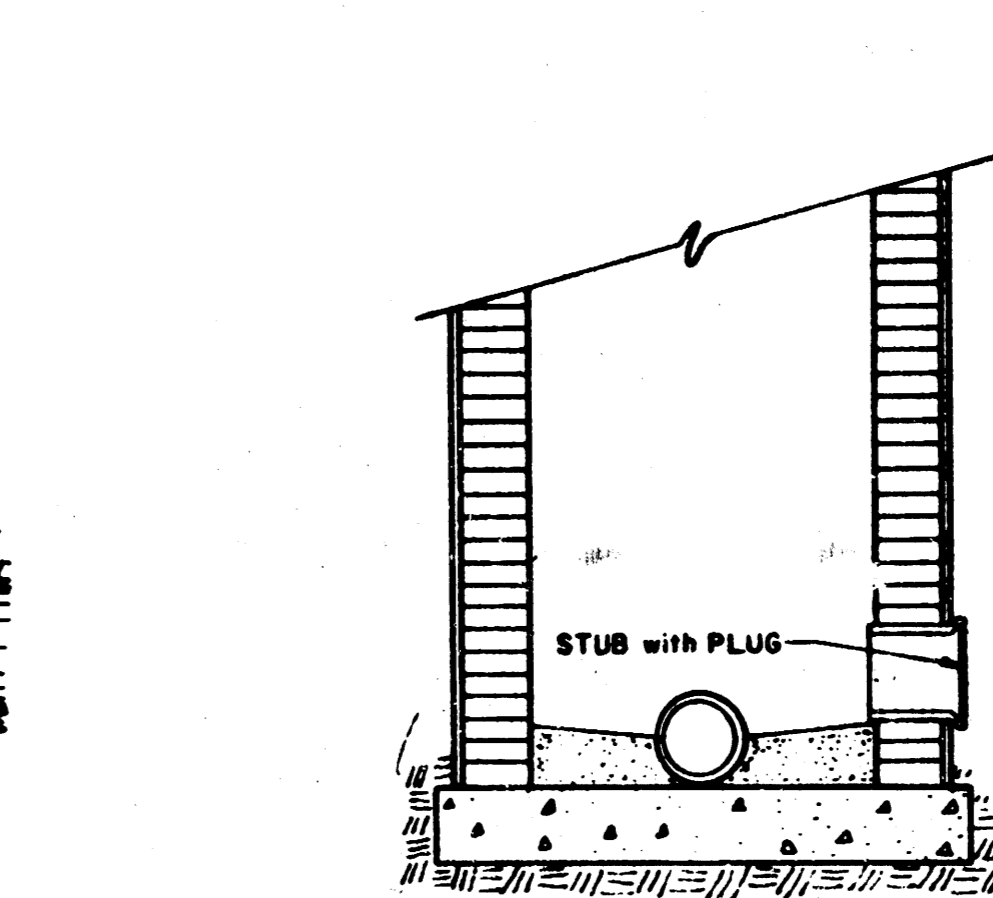
SECTION X SHALLOW MANHOLE TYPE D



SECTION Y

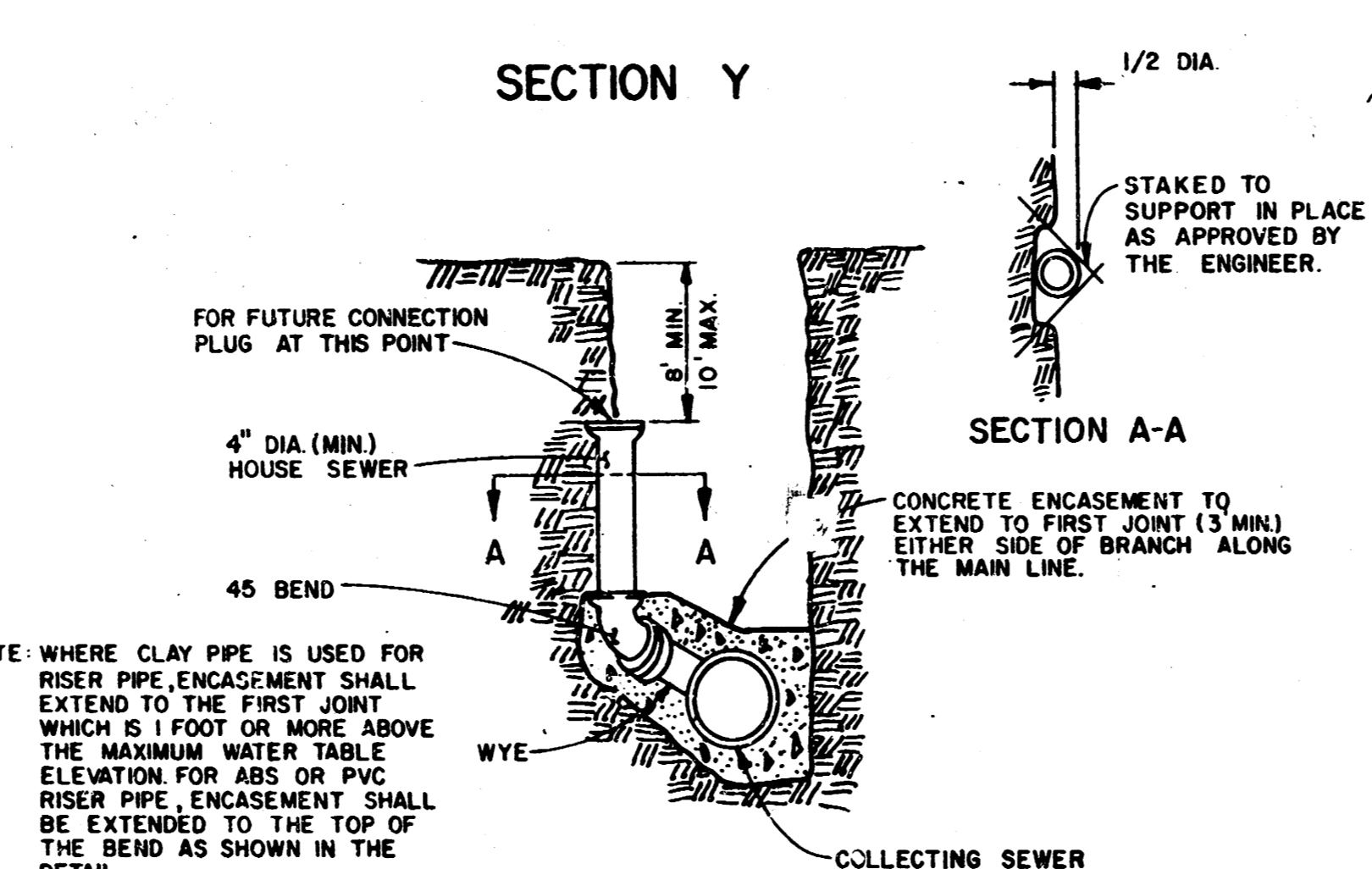


TYPICAL MANHOLE FLOOR SHAPING

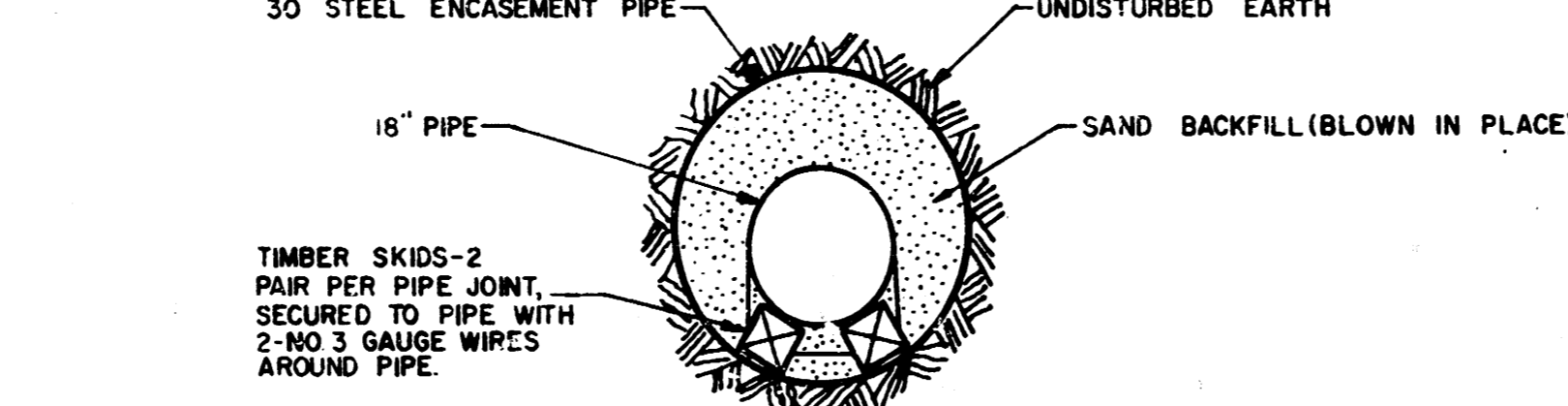


STUB DETAIL

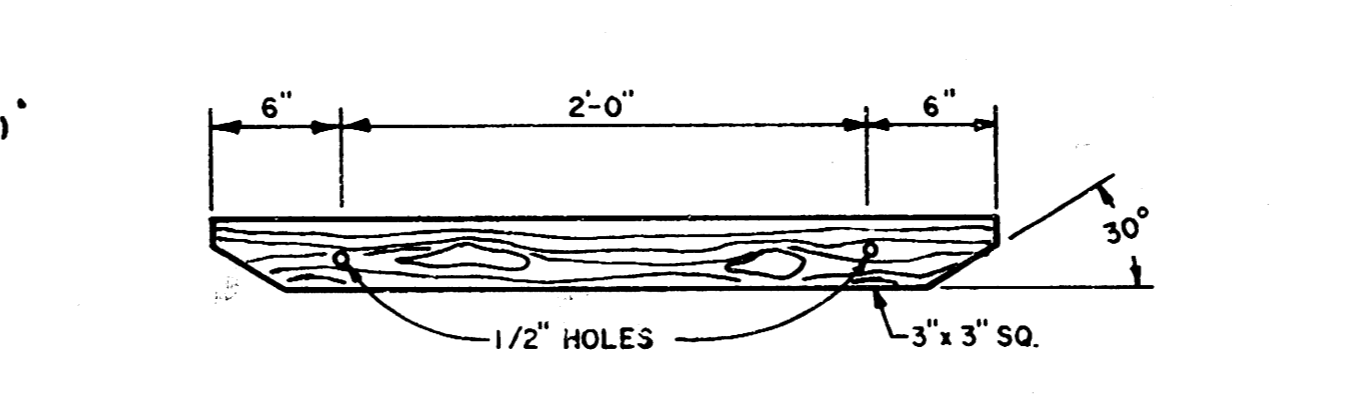
- NOTES**
1. IF, IN THE OPINION OF THE ENGINEER, THE MANHOLE SUBGRADE APPEARS UNSTABLE, THE CONTRACTOR HAS THE OPTION TO COMPACT SUBGRADE AS SHOWN OR INCREASE THE THICKNESS OF THE MANHOLE BASE AS DIRECTED BY THE ENGINEER.
 2. STEEL REINFORCING IS REQUIRED IN ALL MANHOLE BASES.
 3. MORTAR USED IN MASONRY CONSTRUCTION TO BE CLASS III MIX.
 4. ALL MANHOLE BASES TO BE CLASS I MIX.
 5. APPROVED FLEXIBLE WATERSTOP GASKETS SHALL BE INSTALLED TO JOIN THE SEWER TO THE MANHOLE WALL WHEN A.B.S., COMPOSITE PIPE, POLYETHYLENE PIPE, OR P.V.C. PIPE IS USED. FOR OTHER TYPES OF PIPE THE SEWER EXTENDING FROM MANHOLES SHALL BE SUPPORTED WITH CONCRETE TO THE FIRST JOINT OF PIPE FROM THE MANHOLE WALL. CONCRETE SUPPORTS MAY BE DELETED PROVIDED AN APPROVED FLEXIBLE WATERSTOP GASKET IS INSTALLED TO JOIN THE SEWER TO THE MANHOLE WALL.
 6. PIPE PLUGS SHALL BE AS MANUFACTURED BY PIPE SUPPLIER WHEN AVAILABLE.
 7. ALL PIPES SHALL BE CUT FLUSH WITH MANHOLE WALL.



RISER DETAIL



BORING ENCASEMENT DETAIL



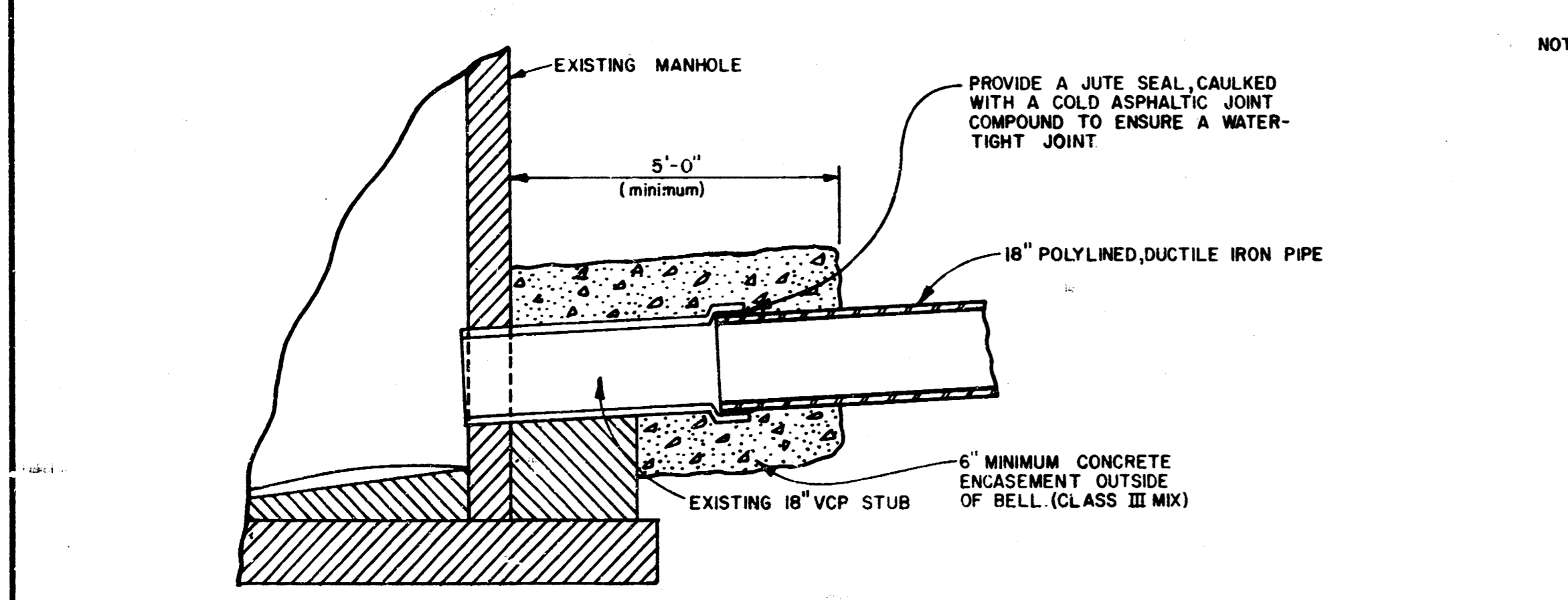
TIMBER SKID DETAIL

WYE NO.	LOCATION			PIPE RISER (L.F.)	DISTANCE FROM MANHOLE*	
	LINE NO.	STATION	DIRECTION		UPSTREAM	DOWNSTREAM
1	4	6+50"	LEFT	5		
2	4	8+27"	LEFT	5		
3	4	8+87"	LEFT	4		
4	4	12+14"	LEFT	4		
5	4	14+40"	LEFT	4		
6	4	8+10"	LEFT	5		
7	4	15+70"	LEFT	5		
8	4	16+37"	LEFT	5		
9	4	17+07"	LEFT	5		
10	4	17+72"	LEFT	5		
11	4	18+37"	LEFT	4		
12	4	19+00"	LEFT	4		

RISER LOCATION TABLE

WYE NO'S 1 THRU 4 ARE 12" x 4" WYES
WYE NO'S 5 THRU 12 ARE 10" x 4" WYES

* THIS ITEM TO BE COMPLETED BY THE RESIDENT INSPECTOR AT TIME OF INSTALLATION.



SPECIAL JOINTING DETAIL

AS CONSTRUCTED
M.D.S. PROJ. ENG. 11/2/78
R.F.J. PROJ. ENG. DATE

Professional Engineer Seal for Richard D. Schumacher, No. 6778, State of Kansas.

SEGWICK COUNTY DEPARTMENT OF PUBLIC WORKS
G.C. MCLURE, JR., P.E. DIRECTOR & COUNTY ENGINEER

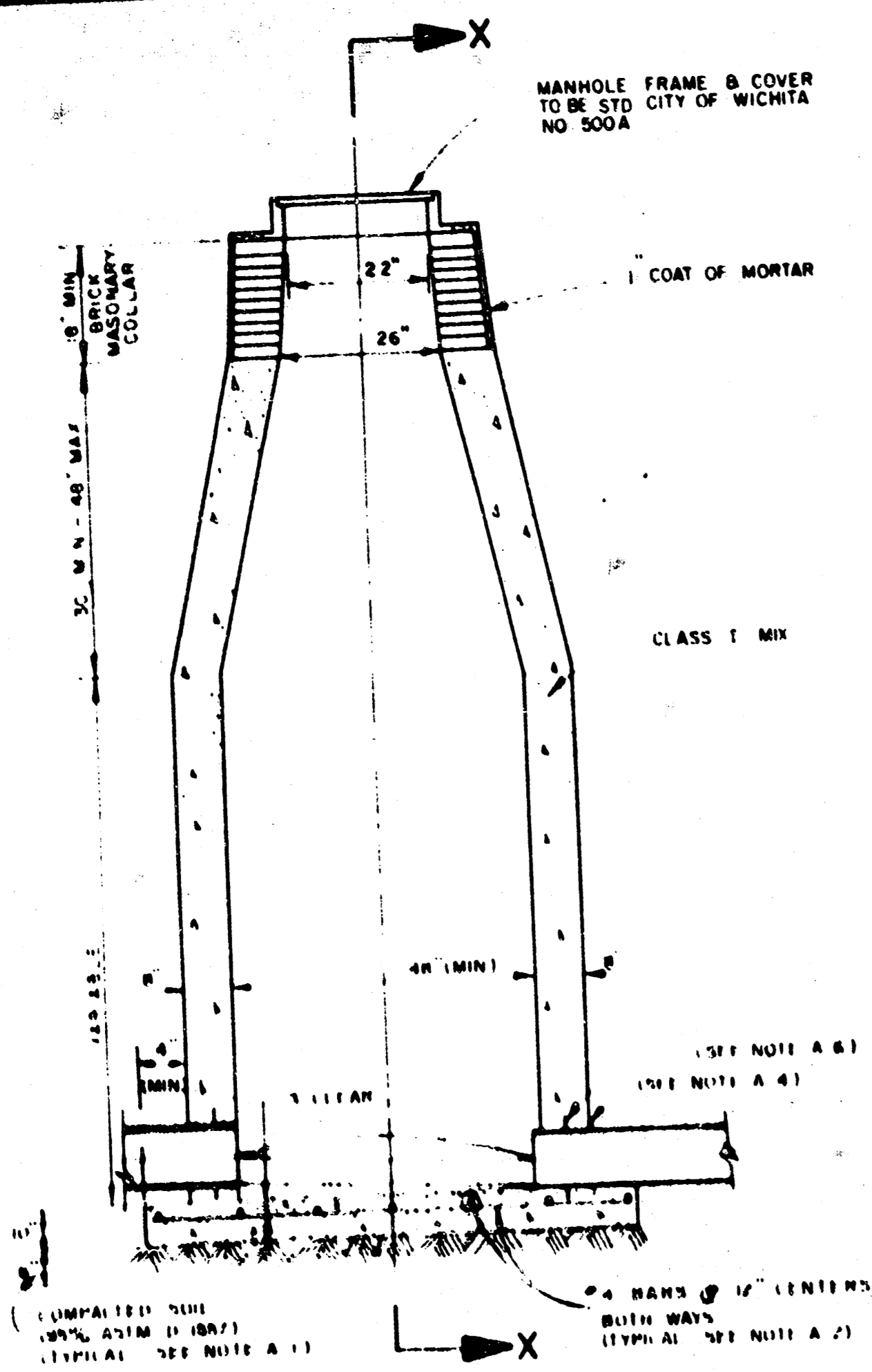
SANITARY SEWER DETAILS

SANITARY SEWER IMPROVEMENTS
PARK MEADOW ESTATES LATERAL SEWER DISTRICT SEGWICK COUNTY, KANSAS

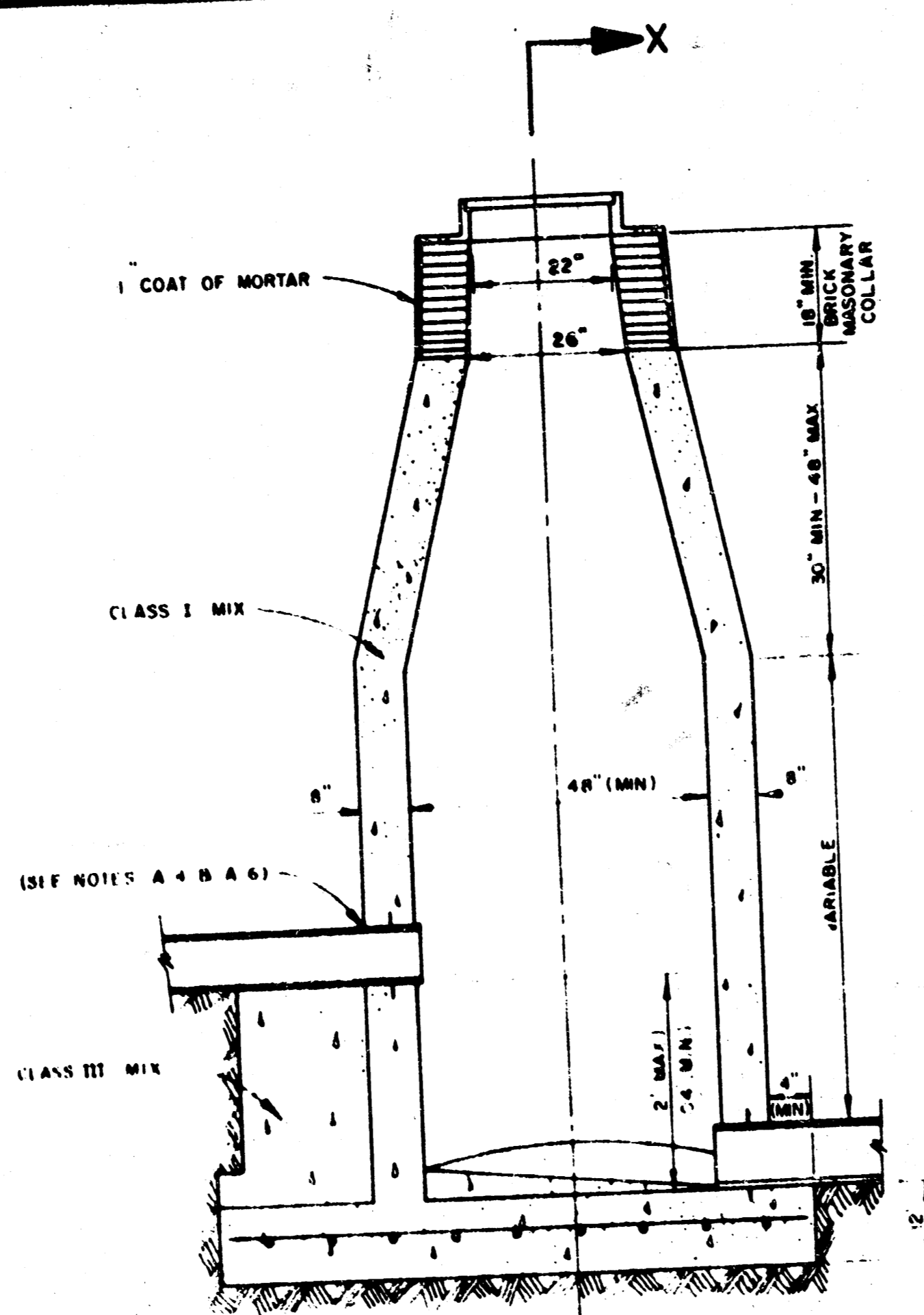
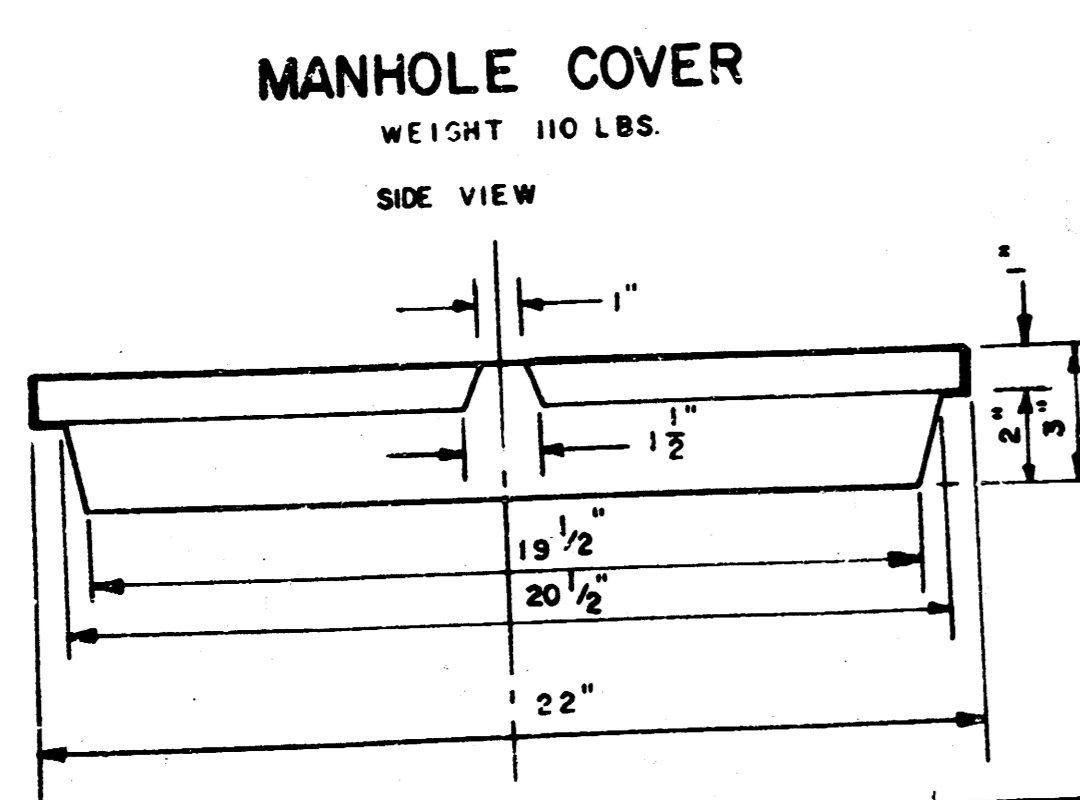
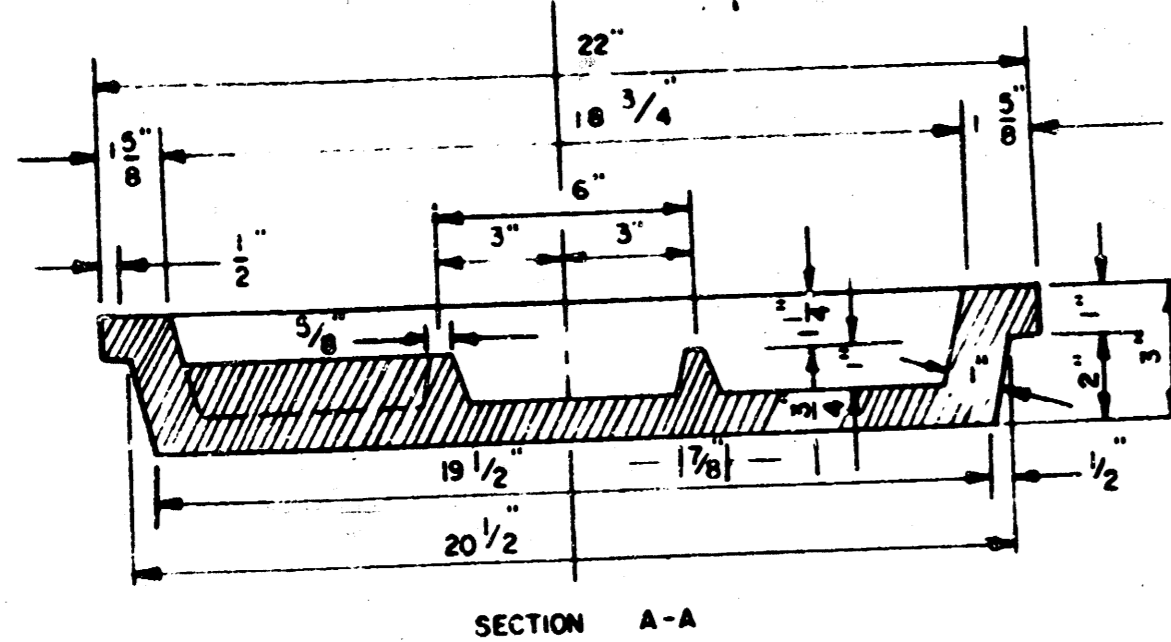
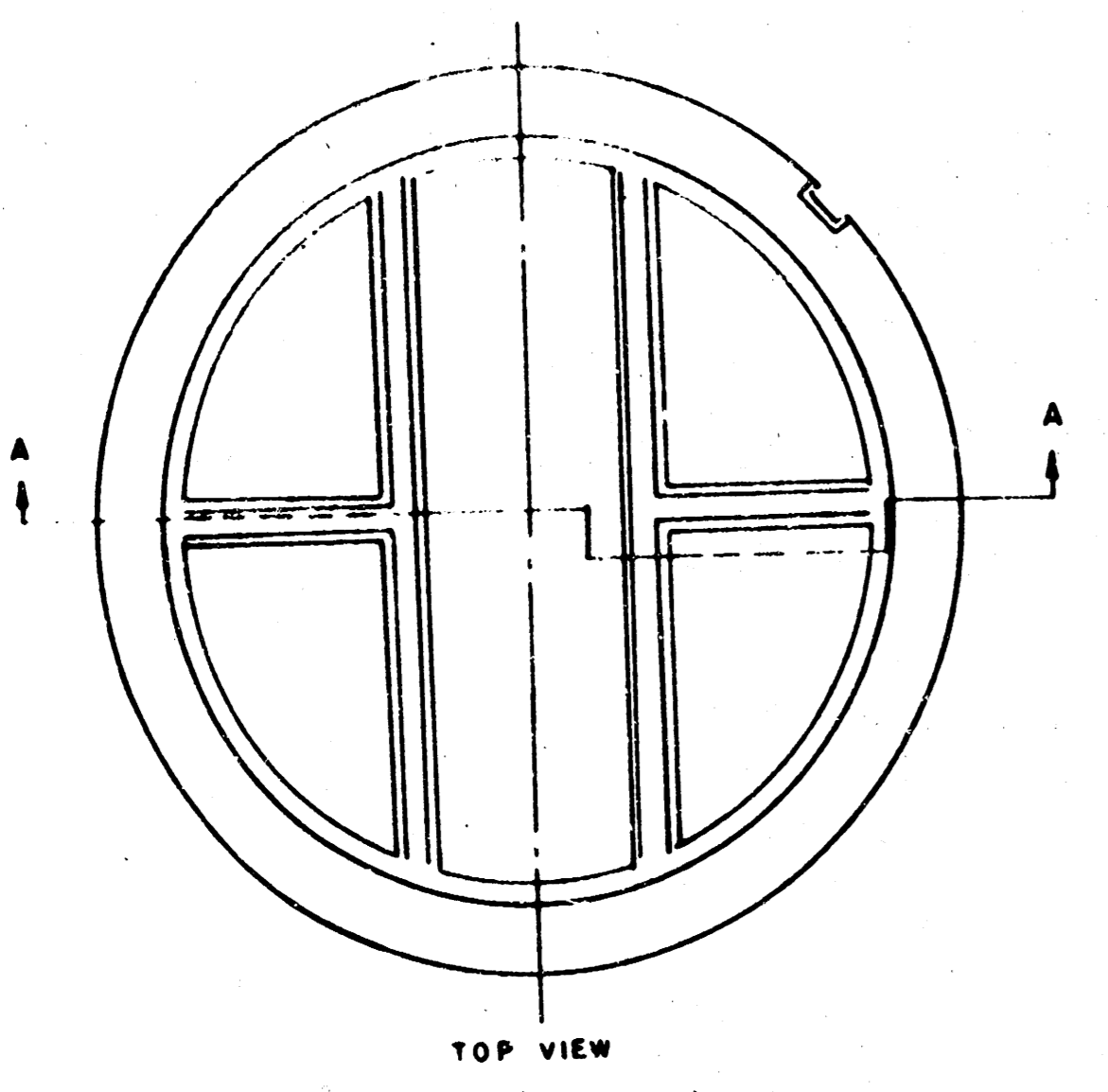
PROFESSIONAL ENGINEERING CONSULTANTS, P.A.
ENGINEERS
WICHITA, KANSAS

Designed by M.D.S. Job No. 76406 Sh. 3 of 6
Drawn by R.F.J. Date Nov. 78

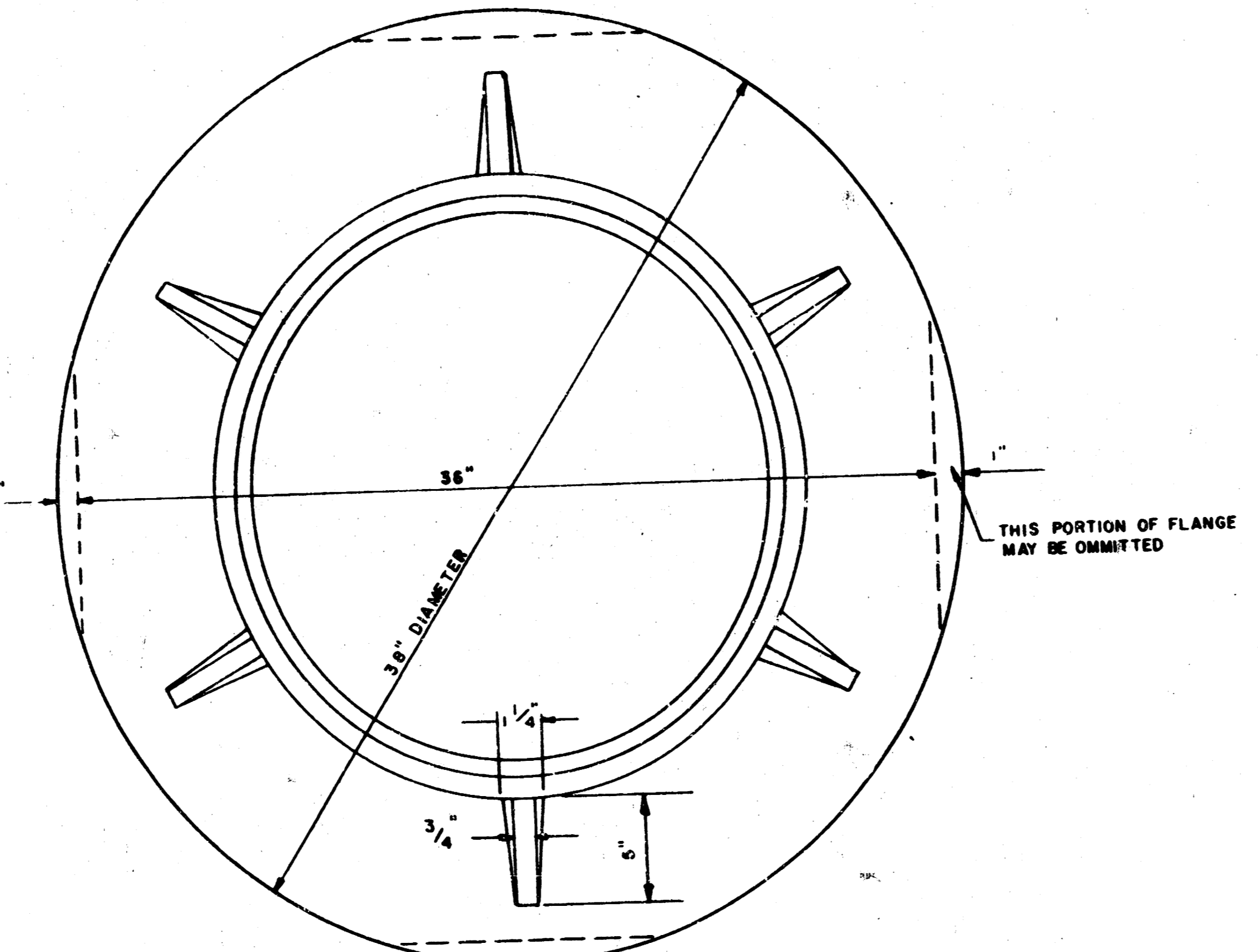
FILMED FROM THE BEST AVAILABLE COPY



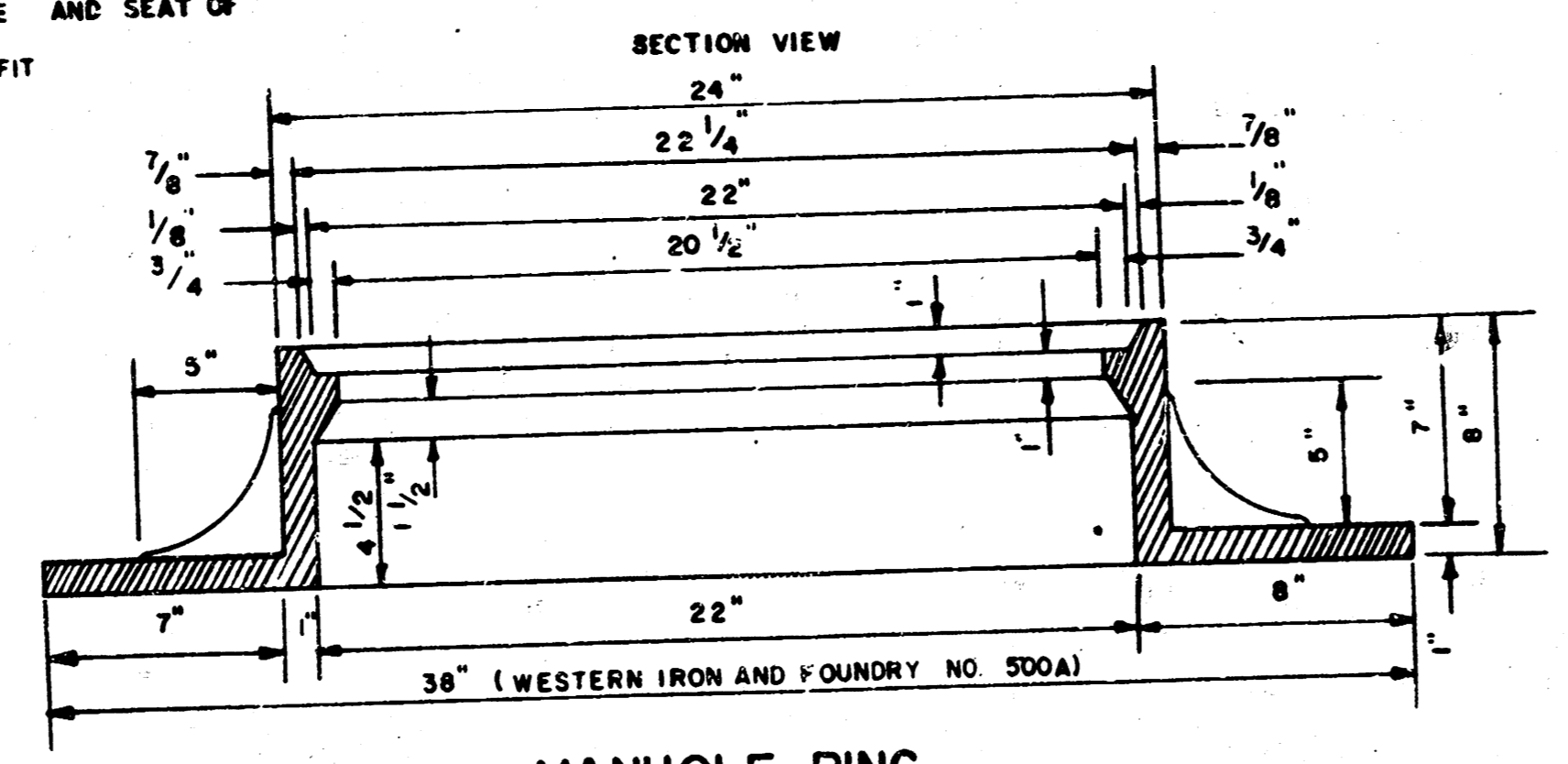
CAST IN PLACE STANDARD MANHOLE TYPE "E-A"



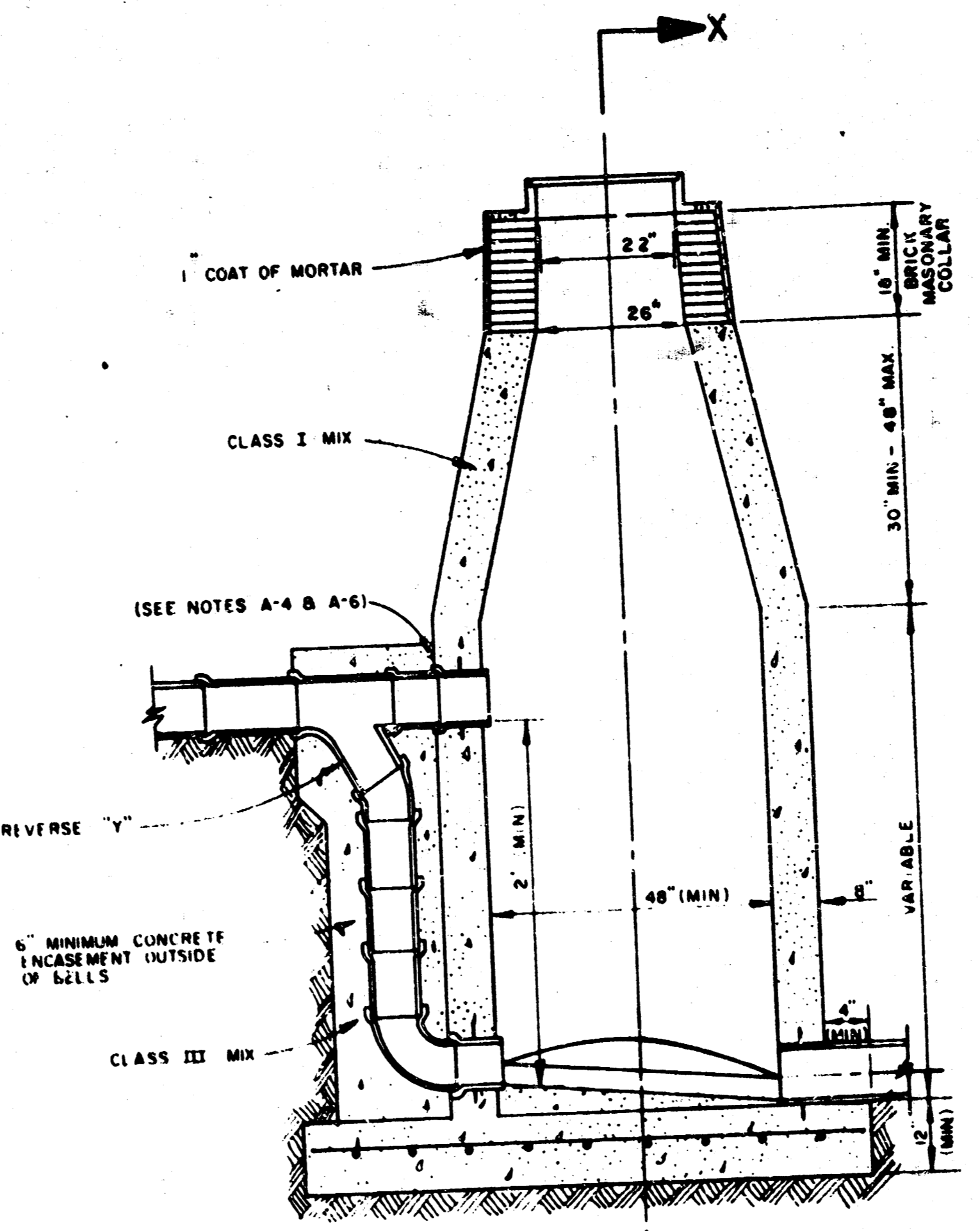
CAST IN PLACE DROP MANHOLE TYPE "E-B"



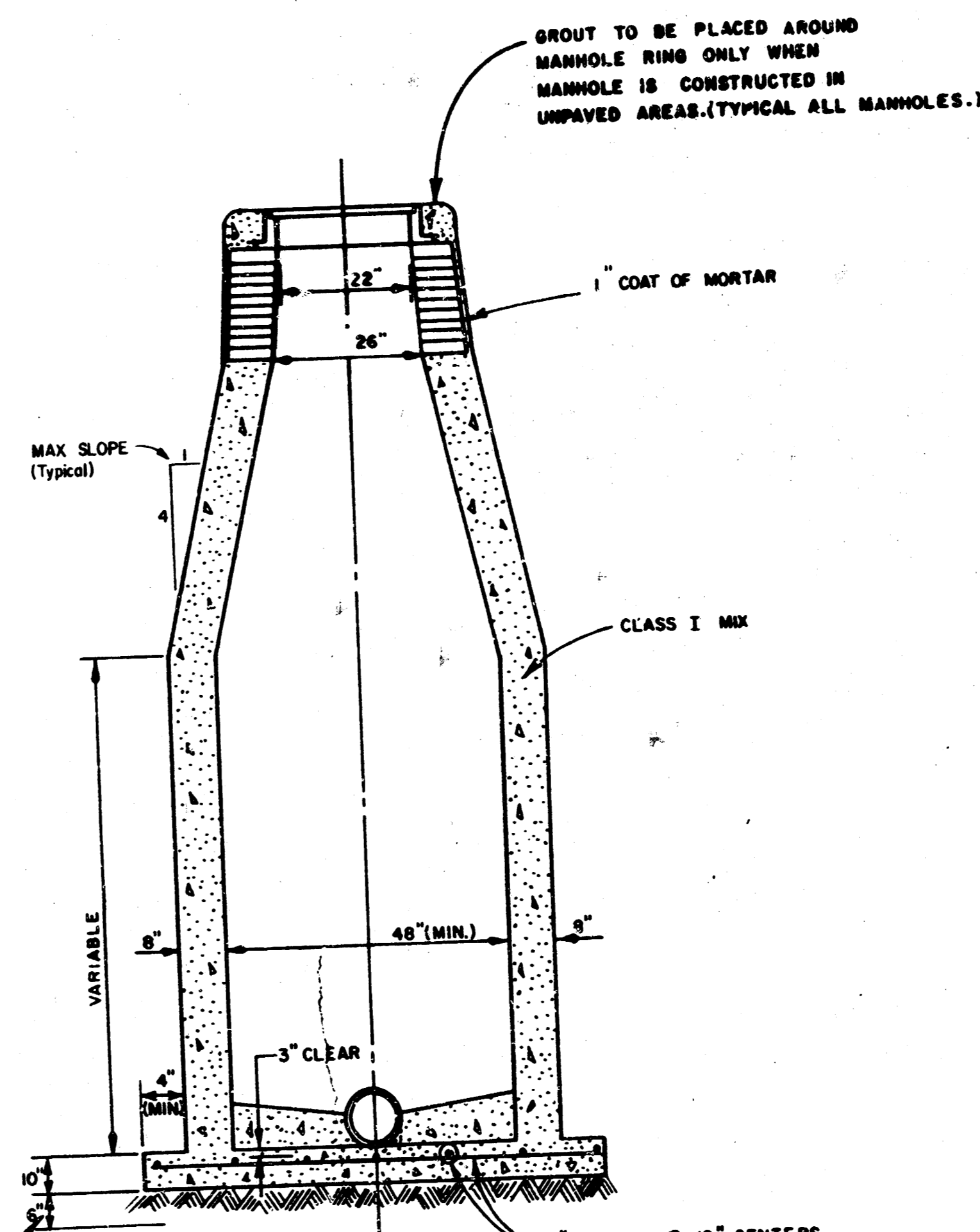
TOP VIEW WEIGHT 325 LBS RING



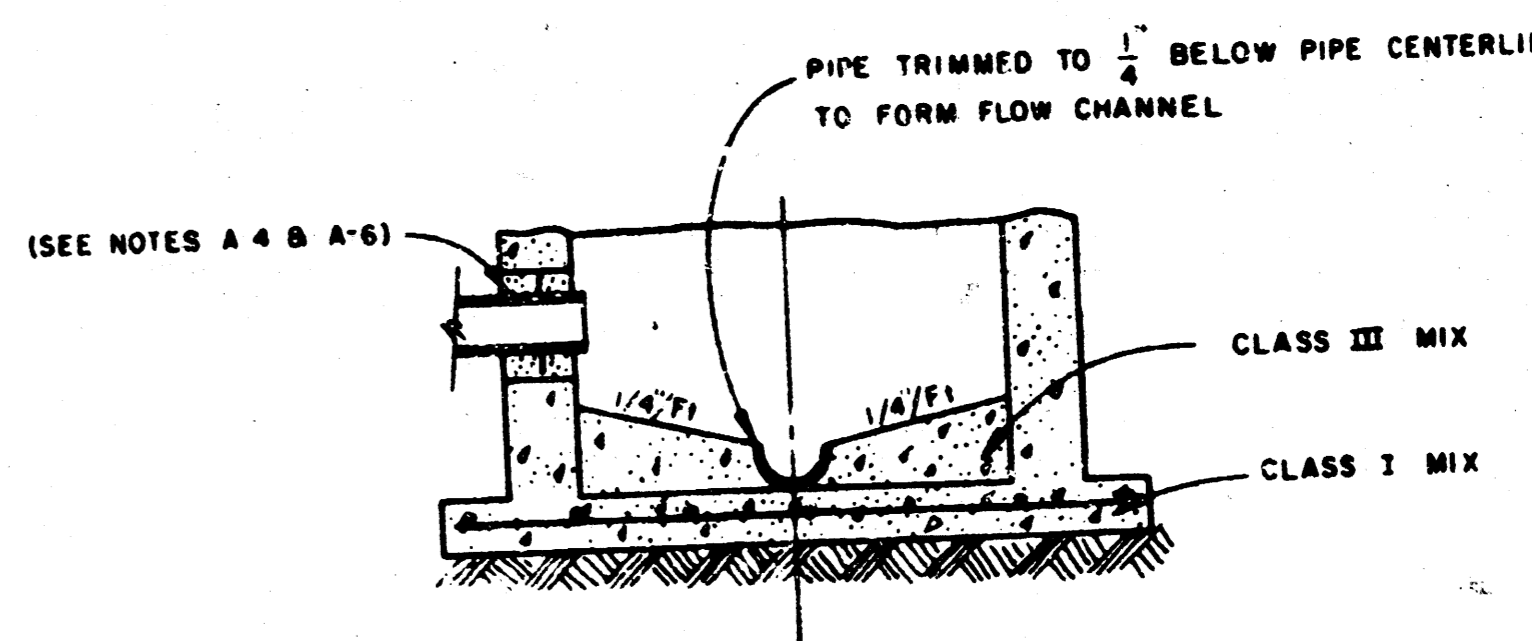
MANHOLE RING



CAST IN PLACE OUTSIDE DROP MANHOLE TYPE "E-C"



SECTION X



SECTIONAL ELEVATION-INVERT

PRECAST MANHOLES

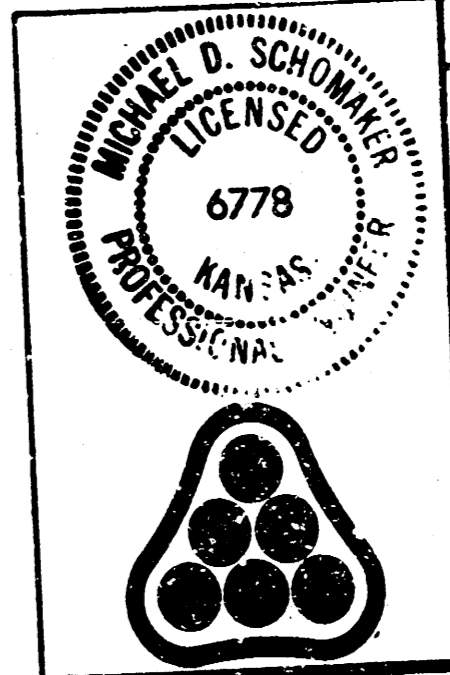
PRECAST MANHOLES MAY BE SUBSTITUTED FOR THE 8" THICK CAST-IN-PLACE MANHOLES. THE MANHOLE BASE AND OUTSIDE MANHOLE PIPE SUPPORTS FOR PRECAST MANHOLES WILL BE THE SAME AS SHOWN FOR CAST-IN-PLACE MANHOLES.

NOTES

- MANHOLES
- IF, IN THE OPINION OF THE ENGINEER, THE MANHOLE SUBGRADE APPEARS UNSTABLE, THE CONTRACTOR HAS THE OPTION TO COMPACT SUBGRADE AS SHOWN OR INCREASE THE THICKNESS OF THE MANHOLE BASE AS DIRECTED BY THE ENGINEER.
- STEEL REINFORCING WILL BE REQUIRED IN ALL MANHOLE BASES.
- MORTAR USED IN MASONRY CONSTRUCTION TO BE CLASS III MIX.
- WHEN OPENINGS ARE CUT IN MANHOLE WALL FOR PIPE, THE PIPE WILL BE GROUTED IN PLACE WITH NON-SHRINKING GROUT. EXTERIOR OF COMPLETED CONNECTION TO BE SEALED WITH APPROVED COATING.
- CAST-IN-PLACE CIRCULAR CONCRETE MANHOLES ARE TO BE CONSTRUCTED ONLY ON SEWERS NOT SUBJECT TO DETRIORATION DUE TO FORMATION OF HYDROGEN SULFIDE GAS AND IN LOCATIONS WHERE IT IS OBVIOUS THAT ANY ADJUSTMENT OF THE MANHOLE TOP ELEVATION WHICH MAY BE NECESSARY WILL NOT REQUIRE MODIFICATION OF THE CONCRETE BARREL.
- APPROVED FLEXIBLE WATERSTOP GASKETS SHALL BE INSTALLED TO JOIN THE SEWER TO THE MANHOLE WALL WHEN A.B.S. COMPOSITE PIPE, POLYETHYLENE PIPE OR P.V.C. PIPE IS USED. FOR OTHER TYPES OF PIPE THE SEWER EXTENDING FROM MANHOLES SHALL BE SUPPORTED WITH CONCRETE TO THE FIRST JOINT OF PIPE FROM THE MANHOLE WALL. CONCRETE SUPPORTS MAY BE DELETED PROVIDED AN APPROVED FLEXIBLE WATERSTOP GASKET IS INSTALLED TO JOIN THE SEWER TO THE MANHOLE WALL.
- PRECAST MANHOLES SHALL BE SET 4 INCHES INTO THE MANHOLE BASE.

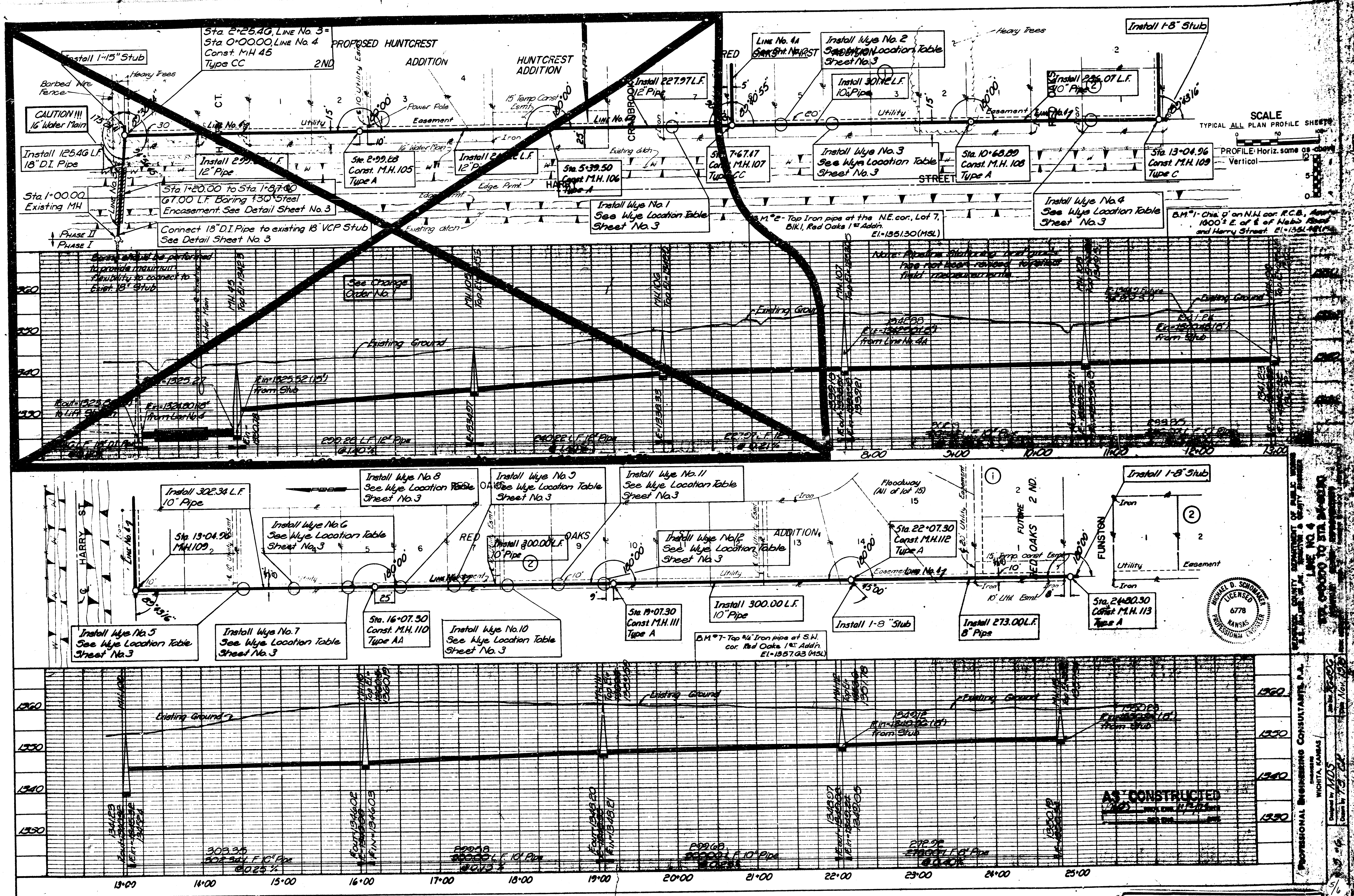
STANDARD MANHOLES TYPE "E-A", "E-B", AND "E-C" MAY BE BID IN LIEU OF STANDARD MANHOLES "A and AA", "B and BB", AND "C and CC", RESPECTIVELY.

AS CONSTRUCTED
MAY 2 1977
PROJ. ENR. 112 12 10 10
RES. ENR. DATE

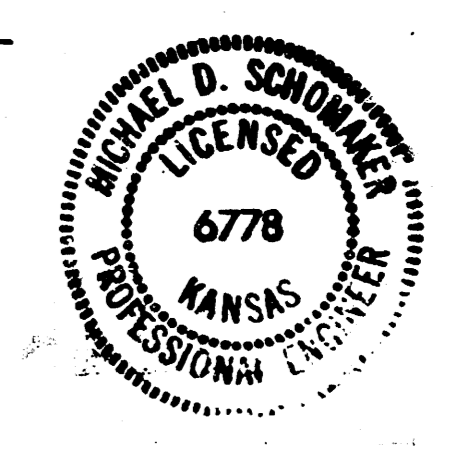


No.	Revision	By	Date
SEDGWICK COUNTY DEPARTMENT OF PUBLIC WORKS G. C. McLURE, JR., P.E. DIRECTOR & COUNTY ENGINEER			
SANITARY SEWER DETAILS SANITARY SEWER IMPROVEMENTS PARK MEADOW ESTATES LATERAL SEWER DISTRICT SEDGWICK COUNTY, KANSAS PROFESSIONAL ENGINEERING CONSULTANTS, P.A. ENGINEERS WICHITA, KANSAS			
Designed by	M.D.S.	Job No	76496
Drawn by		Date	3/21/77
		Sh.	4 of 46

FILMED FROM THE BEST AVAILABLE COPY

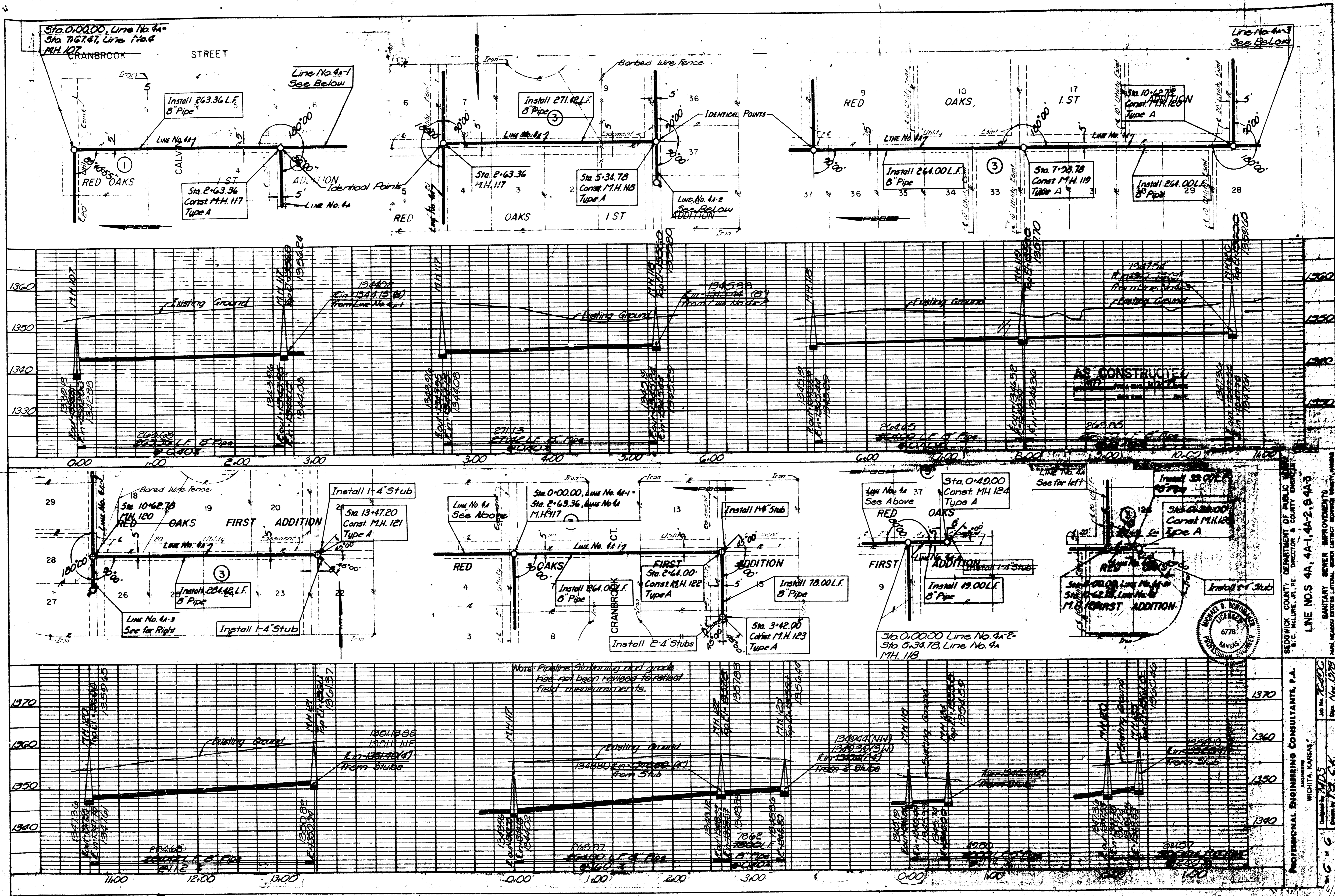


SCALE
TYPICAL ALL PLAN PROFILE SHEETS
PROFILE: Horiz. same as plan
Vertical 1" = 5'

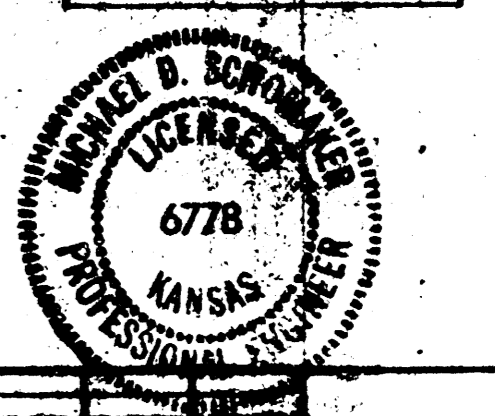


PROFESSIONAL ENGINEERING CONSULTANTS, P.A.
WICHITA, KANSAS
DATE: 7/13/82
DRAWN BY: J.C. [unclear]
CHECKED BY: [unclear]
SCALE: AS SHOWN
SHEET NO. 5/6

FILMED FROM THE BEST AVAILABLE COPY.....



SEDGWICK COUNTY, DEPARTMENT OF PUBLIC UTILITIES & COUNTY ENGINEERING
 S.C. McLELLAN, JR., P.E., DIRECTOR
 LINE NOS 4A, 4A-1, 4A-2, & 4A-3
 SANITARY SEWER IMPROVEMENTS
 PROJECT LOCATION: DISTRICT 10, SEWER DISTRICT 10
 DATE: Nov. 1978



PROFESSIONAL ENGINEERING CONSULTANTS, P.A.
 1101 W. 10th St.
 WICHITA, KANSAS
 Drawn by: M.D.S.
 Date: Nov. 1978

FILMED FROM THE BEST AVAILABLE COPY....