

BENCHMARK
 CHISELED SQUARE ON TOP OF CURB
 EAST SIDE OF INLET, NORTH SIDE OF
 KELLOGG FRONTAGE ROAD ON SOUTH
 SIDE OF U.S. 24, APPROX 330' WEST
 OF E. TYLER.
 ELEV = 135.55 CITY DATUM.

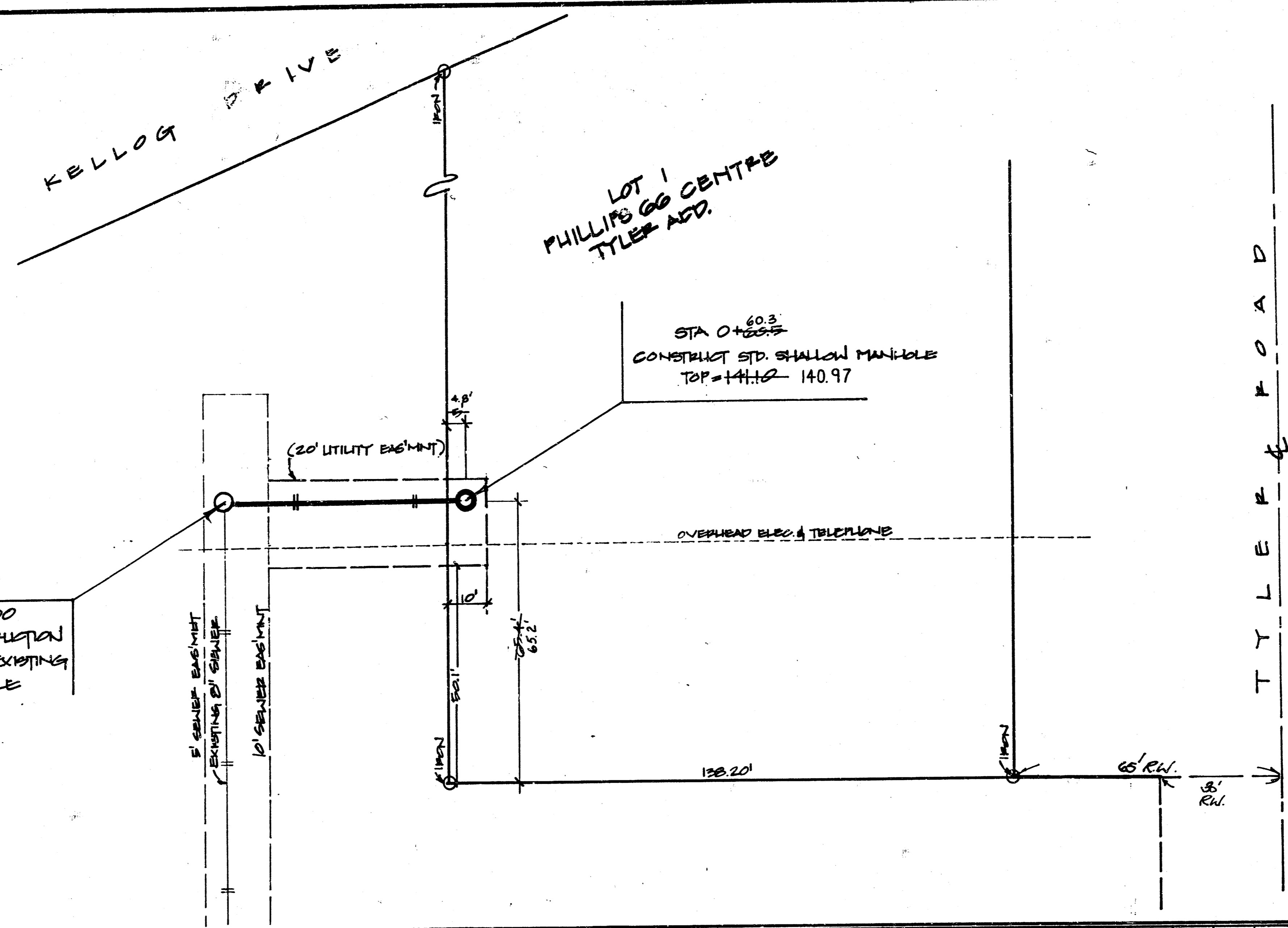
GENERAL NOTES

1. CONTRACTOR WILL BE REQUIRED TO PROVIDE A MINIMUM ADVANCE NOTICE OF TWENTY-FOUR (24) HOURS TO UTILITY COMPANIES PRIOR TO STARTING ANY EXCAVATIONS AS FOLLOWS:

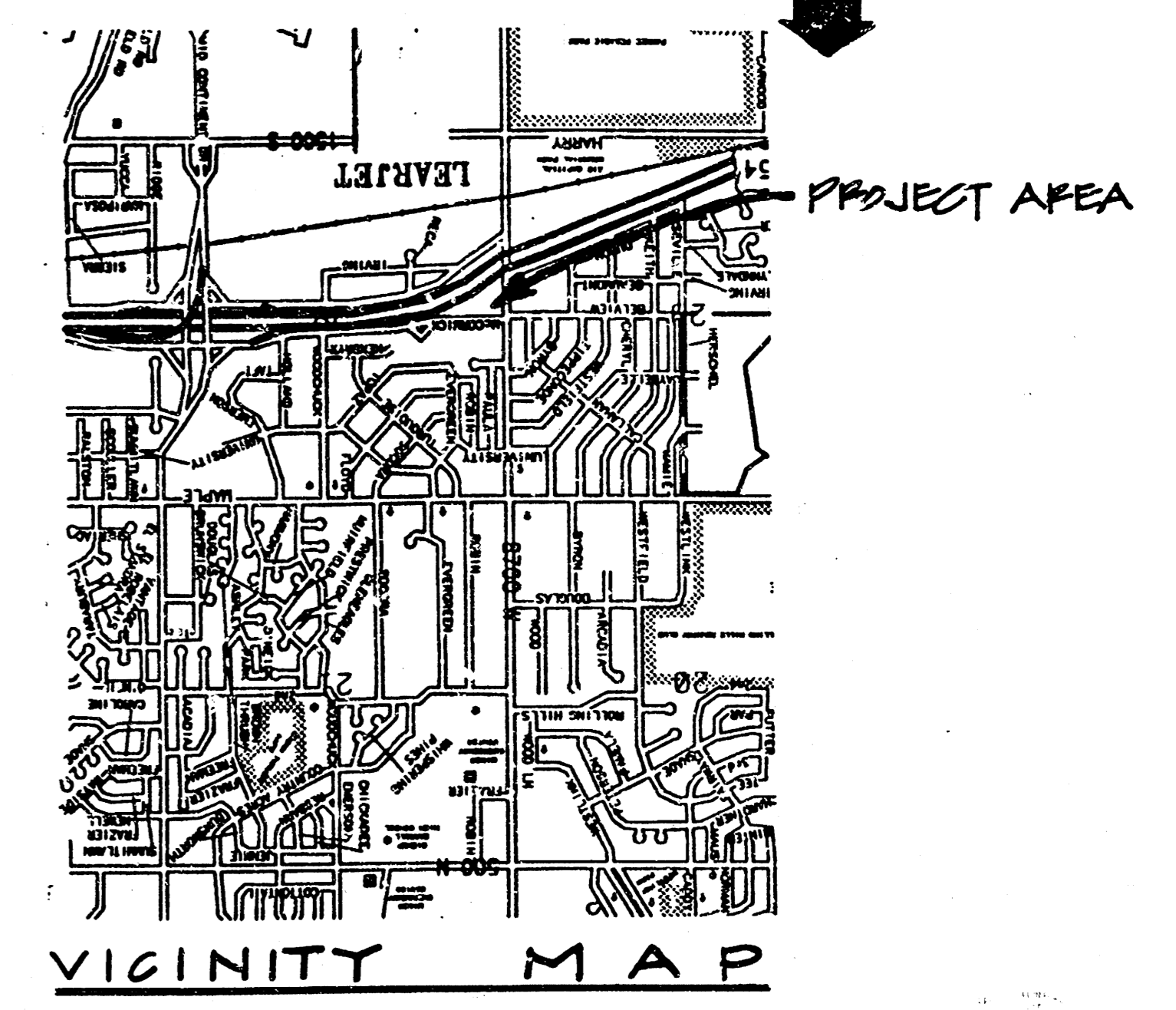
KANSAS ONE-CALL 1-800-344-7235
 THE CONTRACTOR MUST NOTIFY THE FOLLOWING IN CASE OF AN EMERGENCY:

- CABLE VISION 202-4270 or 203-2001
- KRA L. GAS SERVICE CO. 203-7911
- KANSAS GAS ELECTRIC 264-1141
- ARKLA GAS COMPANY 743-8930 or 263-2101
- SOUTHWESTERN BELL TELEPHONE CO. 1-571-2611
- CITY OF WICHITA WATER DEPARTMENT 268-4908
- CITY OF WICHITA SEWER MAINTENANCE 268-4071

2. UNDERGROUND UTILITY SERVICE LINES AND OVERHEAD UTILITY POLE LINES ARE TO BE ADJUSTED AS NECESSARY BY OTHERS PRIOR TO CONSTRUCTION UNLESS THE PLANS SPECIFICALLY CALL FOR THEIR ADJUSTMENT BY THE CONTRACTOR. EXISTING UTILITIES AND THEIR LOCATION, AS SHOWN ON PLANS, REPRESENT THE BEST INFORMATION OBTAINABLE FOR DESIGN. THE CONTRACTOR WILL BE REQUIRED TO WORK AROUND EXISTING UTILITIES WITHIN THE RIGHT-OF-WAY WHICH DO NOT CONFLICT WITH PROPOSED CONSTRUCTION.

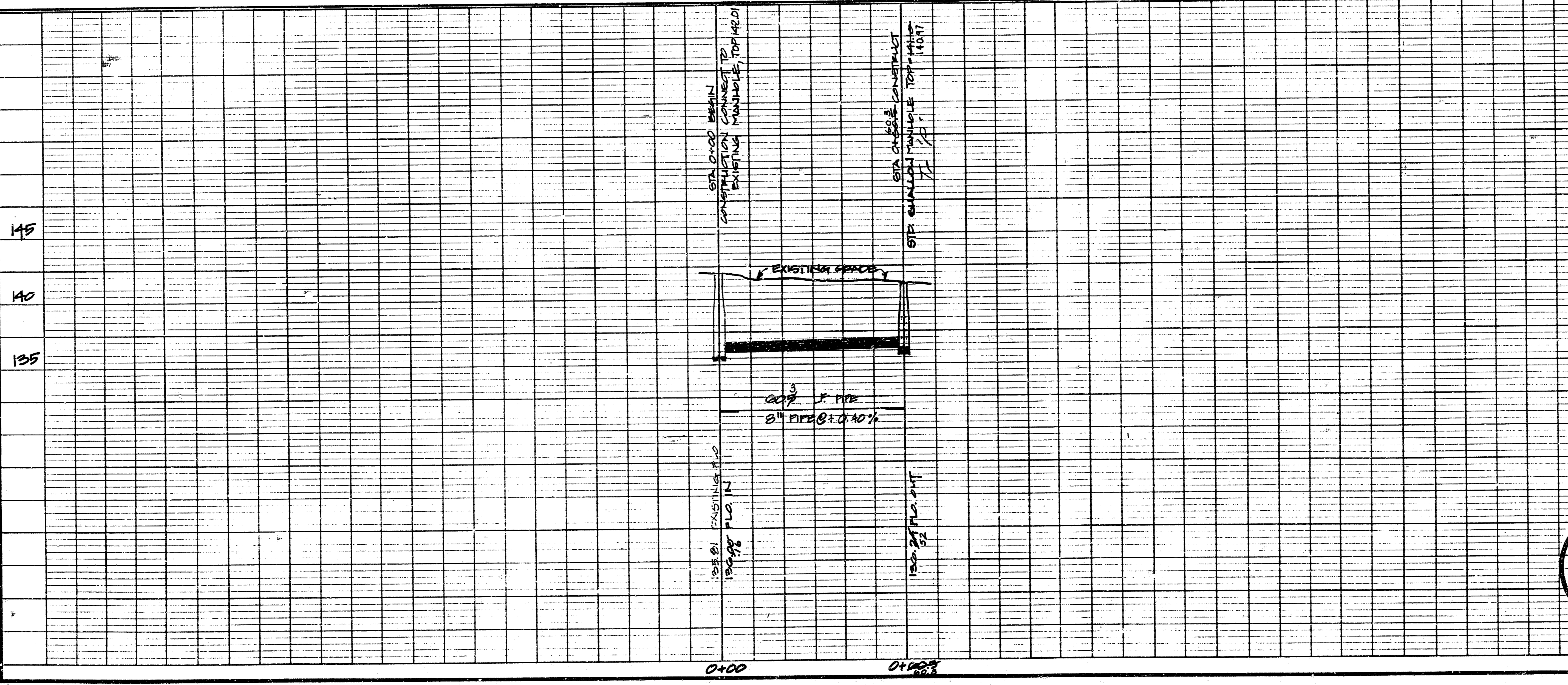


SCALE: 1" = 20' PLAN
 1" = 5' VERT



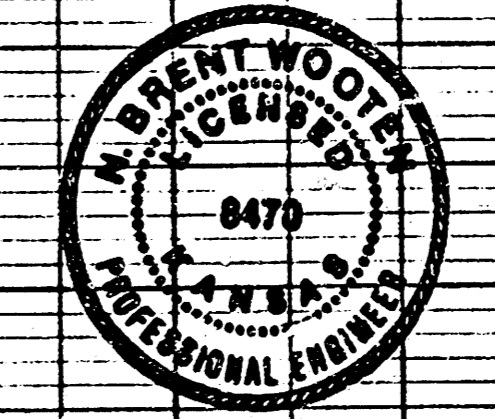
APPROVED AS NOTED
 By CITY ENGINEER OF WICHITA
 Sanitary Sewers VRH 5/31/91
 Storm Sewers _____
 Driveway Approaches _____
 Water Mains _____
 Paving _____

NOTE TO CONTRACTOR
 INSPECTION AND TESTING FOR THIS PROJECT IS TO BE PROVIDED BY A LICENSED CONSULTING ENGINEERING FIRM UNDER CONTRACT WITH THE OWNER/DEVELOPER. SAID INSPECTION TO BE IN ACCORDANCE WITH THE CITY OF WICHITA STANDARD CONSTRUCTION ENGINEERING PRACTICES AND CERTIFIED BY A LICENSED PROFESSIONAL ENGINEER. NO WORK SHALL BE PERFORMED IN DESIGNATED EASEMENTS OR PUBLIC RIGHT-OF-WAY BY THE CONTRACTOR WITHOUT SUCH INSPECTION NOR SHALL ANY WORK BE COMMENCED WITHOUT WRITTEN AUTHORIZATION BY THE CITY ENGINEER.



DATE	BY	REVISION

DATE	BY	REVISION



BOOKED JWB 2-6-92
 REVISED AS BUILT 7-19-91

**PRIVATE SANITARY SEWER
 TO SERVE
 PHILLIPS 66 CENTRE - TYLER ADD.**

BAUGHMAN COMPANY, P.A.
 SURVEYING & ENGINEERING
 316/262-7271 • 316 ELLIS • WICHITA, KANSAS 67211

Design: NDW Drawn: EML Approved: NDW Date: MAY 29, 1991 Scale: 1" = 20' PLAN / 1" = 5' VERT

PRIVATE PROJECT No. 288PTS (607061)

FILMED FROM THE BEST AVAILABLE COPY