

PLANS

SANITARY SEWER EXTENSIONS

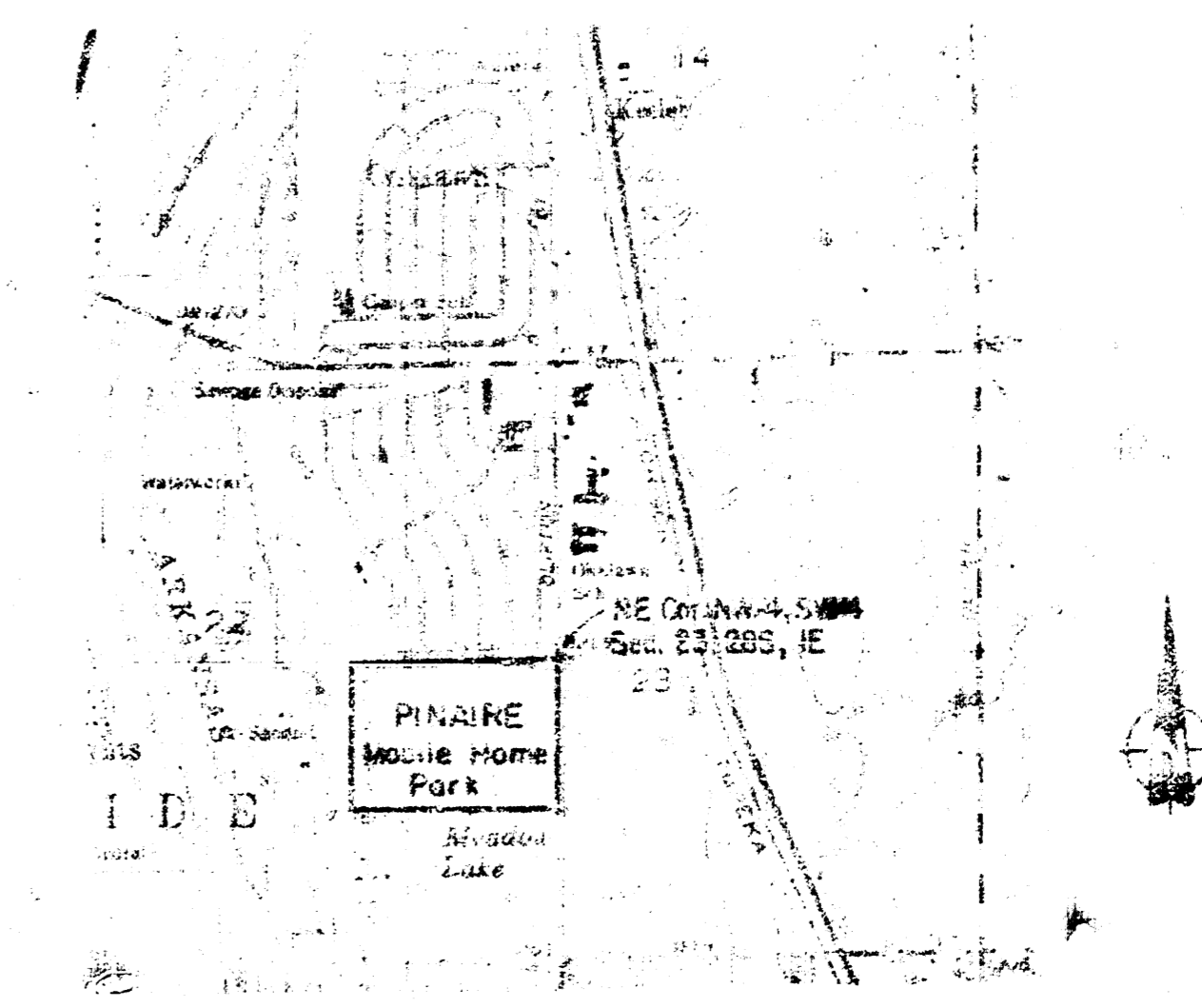
PINAIRE MOBILE HOME PARK

PHASE I

OAKLAWN IMPROVEMENT DISTRICT
SEDGWICK COUNTY, KANSAS

1982

FINAL MEAS. IN
Book DCD-203



VICINITY MAP
Scale: 1" = 200'

NOTE TO CONTRACTOR

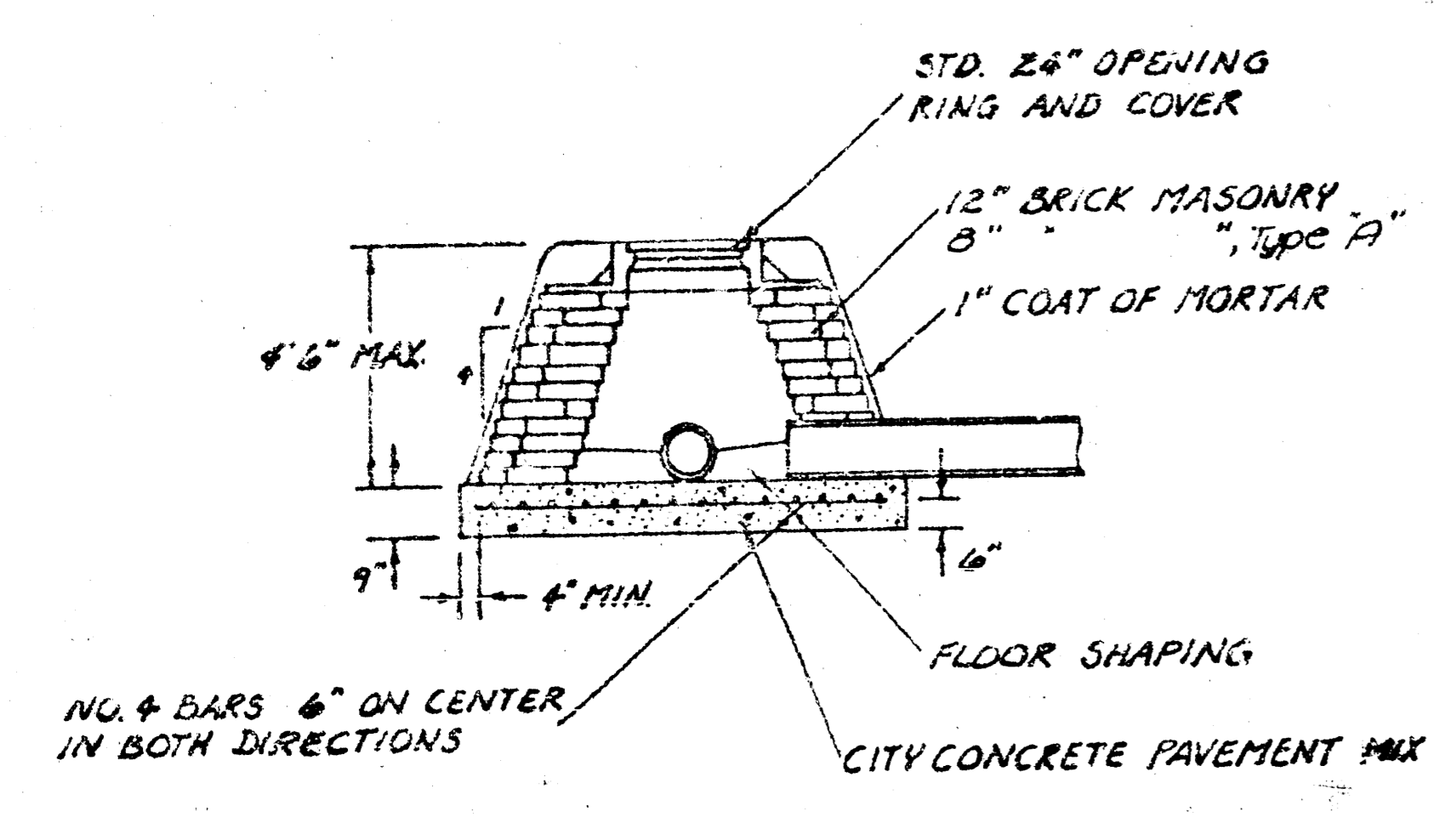
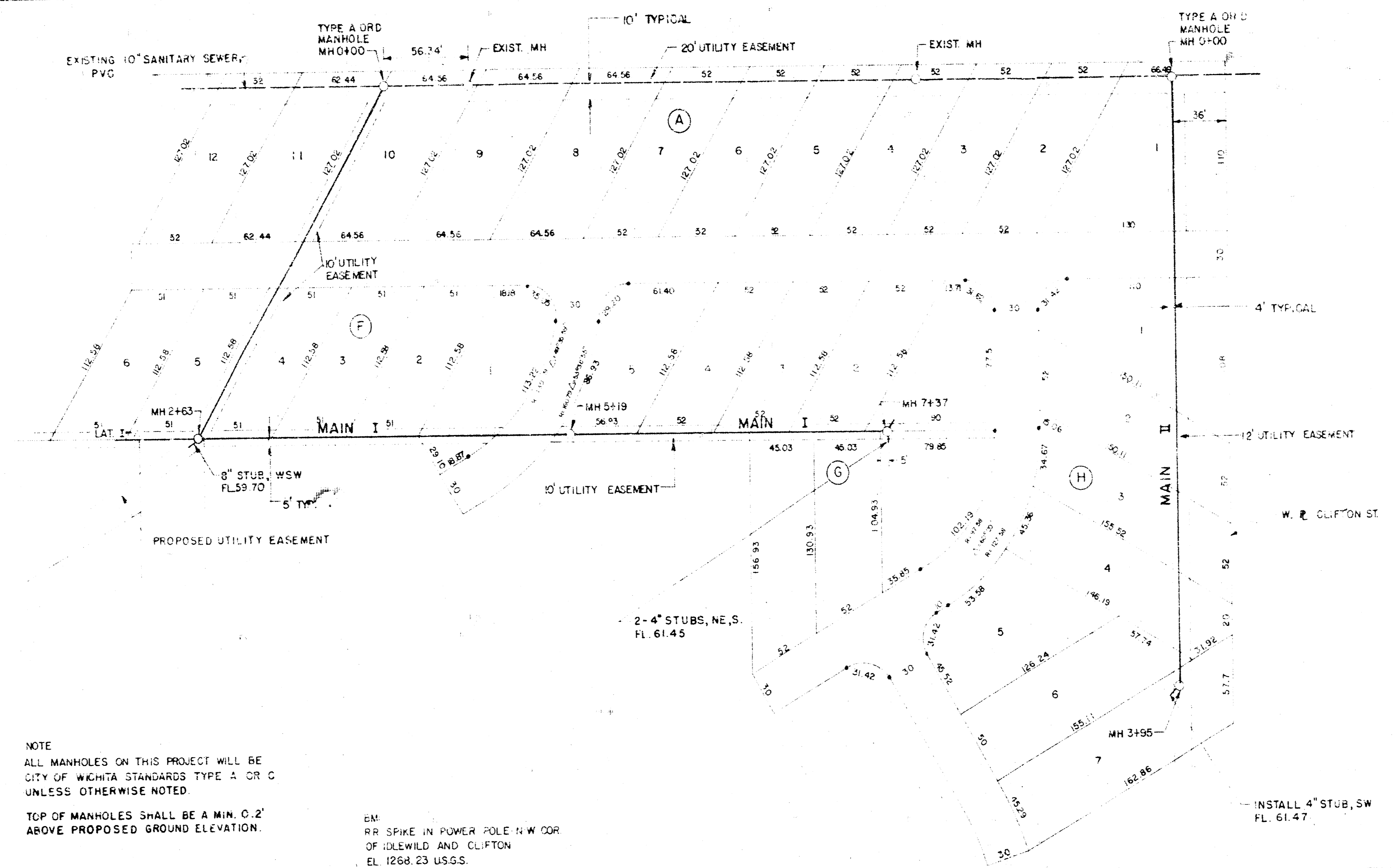
This project will be constructed under the supervision of the CITY ENGINEER and conforming to the SPECIFICATIONS of the CITY OF WICHITA. THE CONTRACTOR will pay the City of Wichita for all costs of inspection.

THE CONTRACTOR SHALL BE RESPONSIBLE FOR OBTAINING PROPERTY RIGHTS. THE CONTRACTOR SHALL BE HELD RESPONSIBLE FOR ANY PROPERTY DAMAGES WHICH ARE CAUSED BY INSTRUMENTS OF HIS CONTRACT. THE CONTRACTOR SHALL BE RESPONSIBLE FOR RE-ESTABLISHING HIS SURVEYING POINTS BY A LICENSED SURVEYOR OR A LICENSED PROFESSIONAL ENGINEER IN ACCORDANCE WITH STATE LAWS.

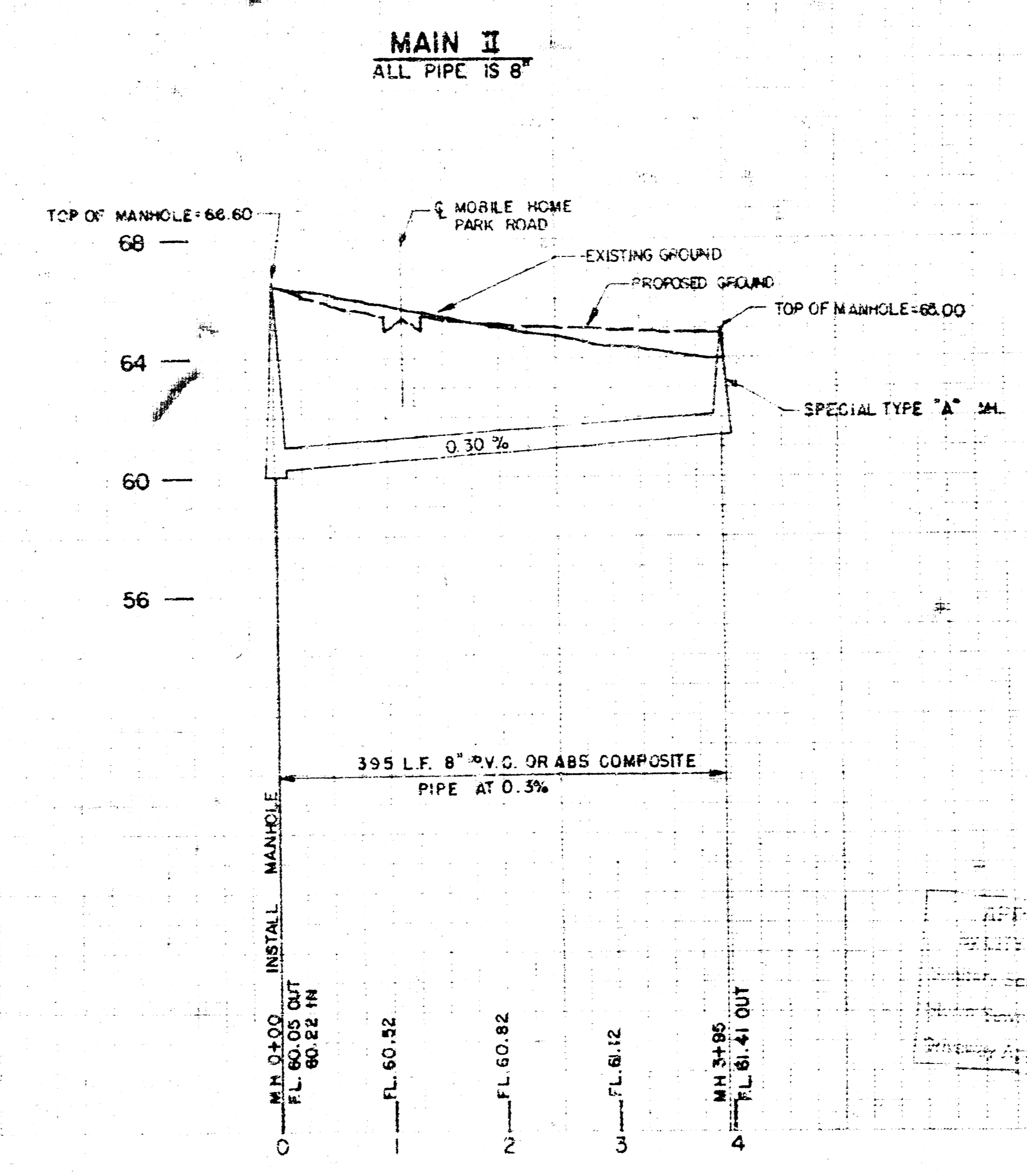
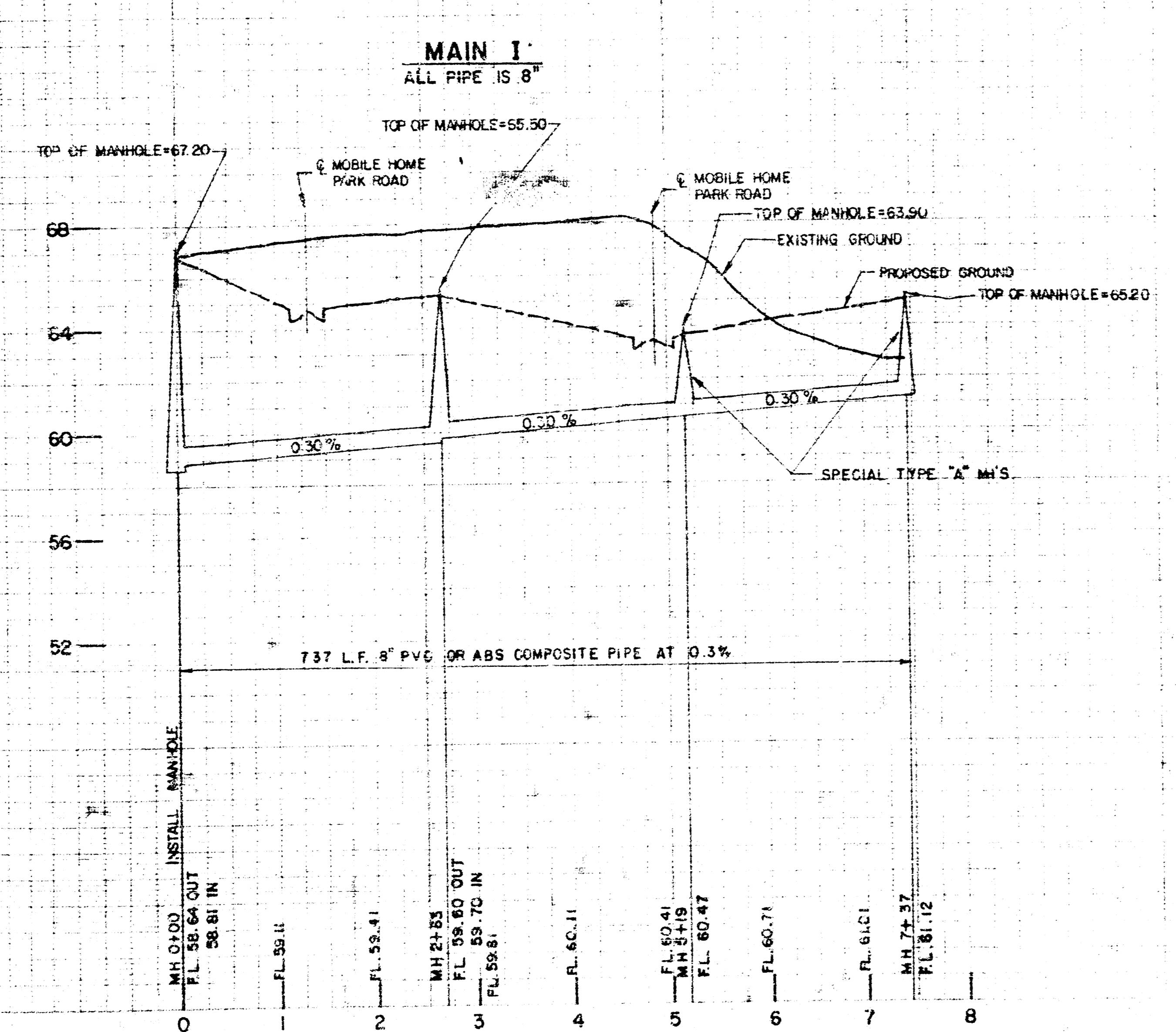
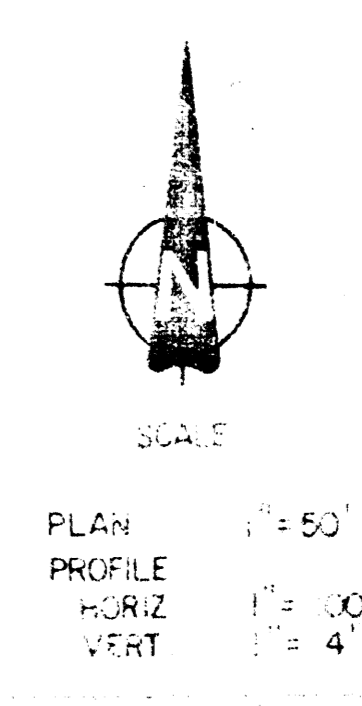
APPROVED AS NOTED
By CITY ENGINEER OF WICHITA

City Engineer
Urban Affairs
Utility Approvals

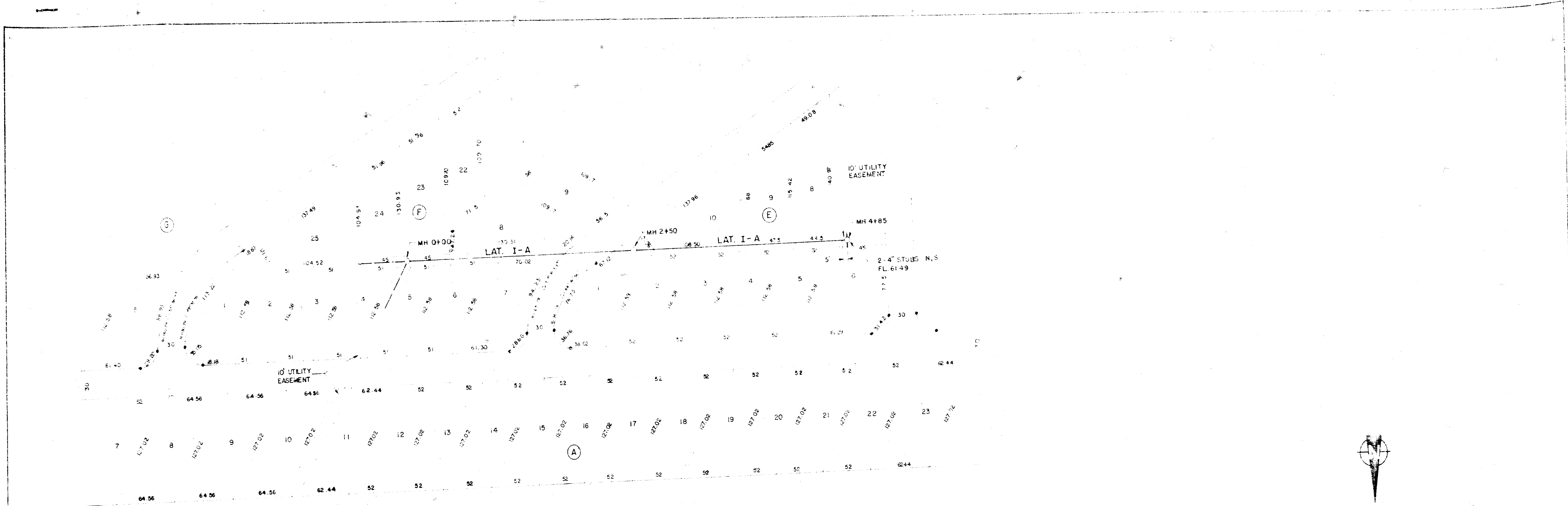
DESS & COOPER ENGINEERS
300 WEST 7TH STREET
WICHITA, KANSAS 67204
PH: 322-0355



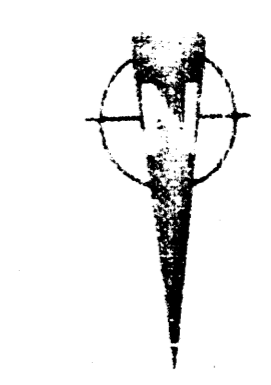
NOTE
 ALL MANHOLES ON THIS PROJECT WILL BE CITY OF WICHITA STANDARDS TYPE A OR C UNLESS OTHERWISE NOTED
 TOP OF MANHOLES SHALL BE A MIN. 0.2' ABOVE PROPOSED GROUND ELEVATION.
 EM RR SPIKE IN POWER POLE NW COR OF IDELWILD AND CLIFTON EL 1268.23 U.S.G.S.



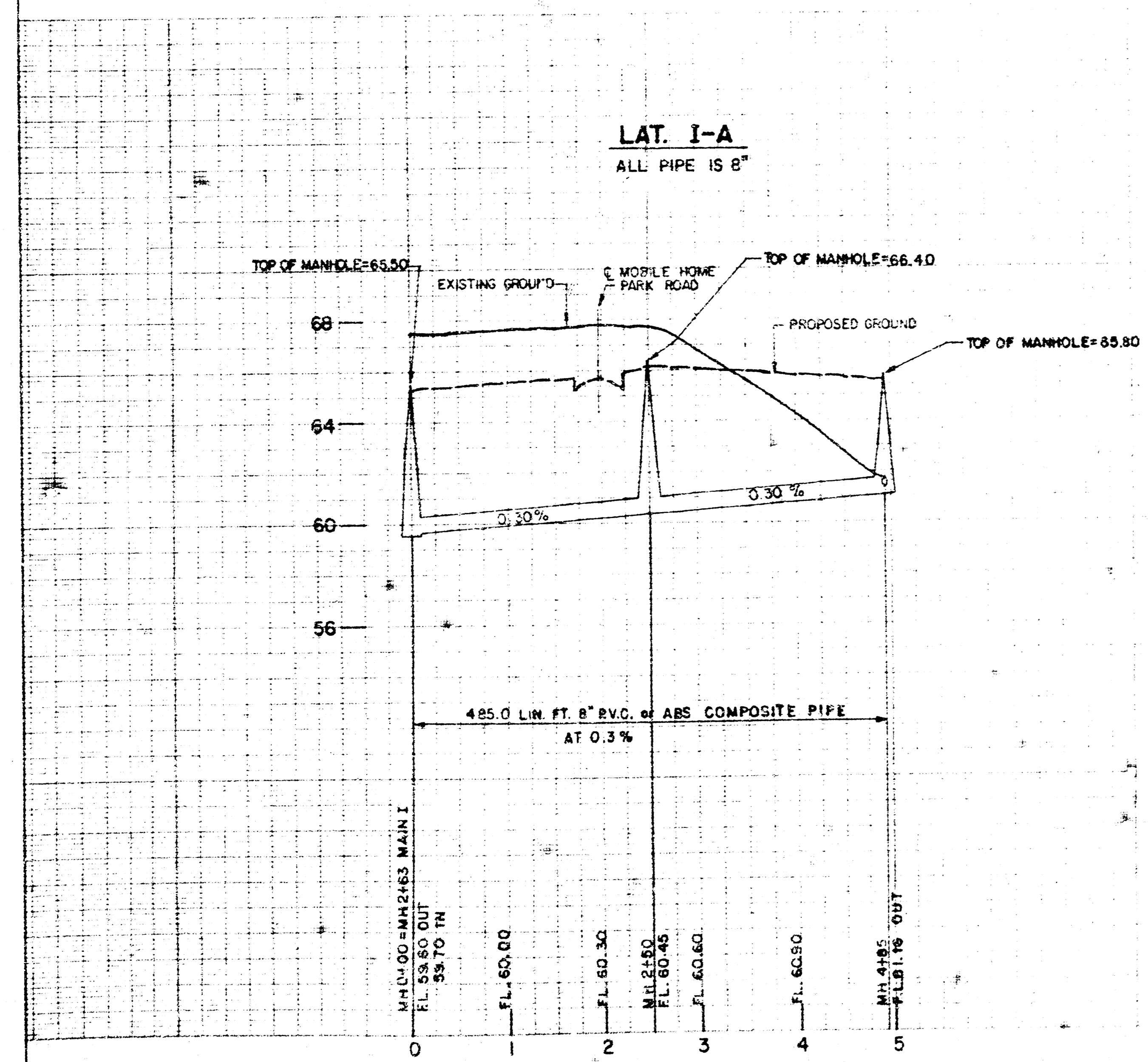
APPROVED FOR CONSTRUCTION BY THE CITY OF WICHITA
 PROJECT NO. 153-381
 SHEET 2 OF 2



NOTE:
 ALL MANHOLES ON THIS PROJECT WILL BE
 CITY OF WICHITA STANDARDS TYPE A OR C
 UNLESS OTHERWISE NOTED.
 TOP OF MANHOLE SHALL BE A MINIMUM OF
 0.2' ABOVE PROPOSED GROUND ELEVATION.



SCALE:
 PLAN 1"=50'
 PROFILE 1"=100'
 VERT. 1"=4'



APPROVED FOR CONSTRUCTION
 DATE: 12/15/12
 BY: [Signature]

BLESS & COURTESY ENGINEERS
 3100 W. 48th St. Suite 100
 Wichita, Kansas 67220
 Phone: 620-261-1233

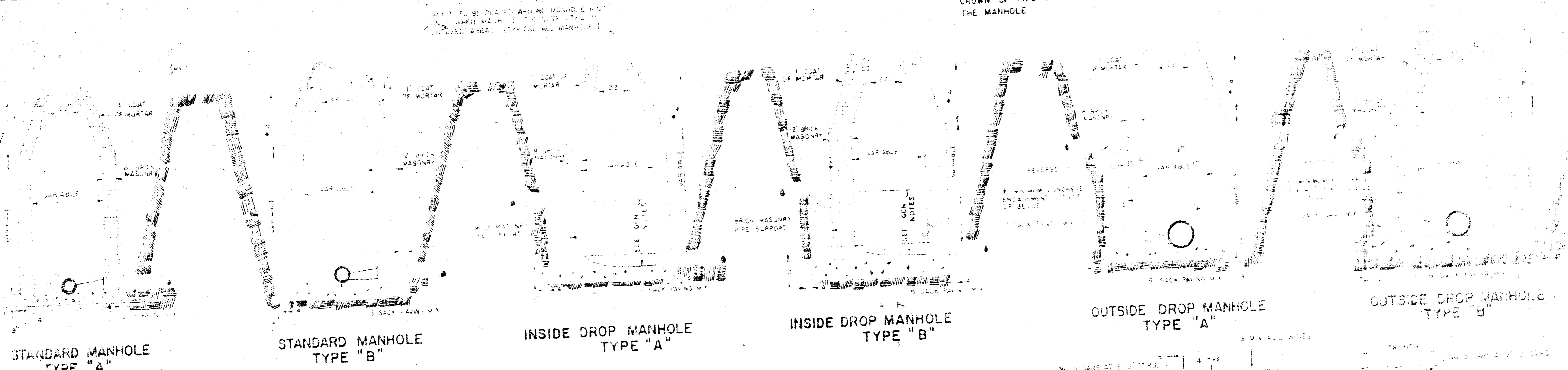
REVISION: _____ DRAWN BY: _____ CHECKED BY: _____ DESIGNED BY: _____ PROJECT: _____

SANITARY SEWER EXTENSION

PINAIRE MOBILE HOME PARK

DATE NOTED: 12/15/12 PROJECT: AS 316
 SHEET 3 OF 7

NOTE: CROWN OF BOTTOM PIPE ON OUTSIDE DROP SHALL ALWAYS BE SET 0.11 HIGHER THAN CROWN OF PIPE CARRYING FLOW OUT OF THE MANHOLE



STANDARD MANHOLE TYPE "A"

STANDARD MANHOLE TYPE "B"

INSIDE DROP MANHOLE TYPE "A"

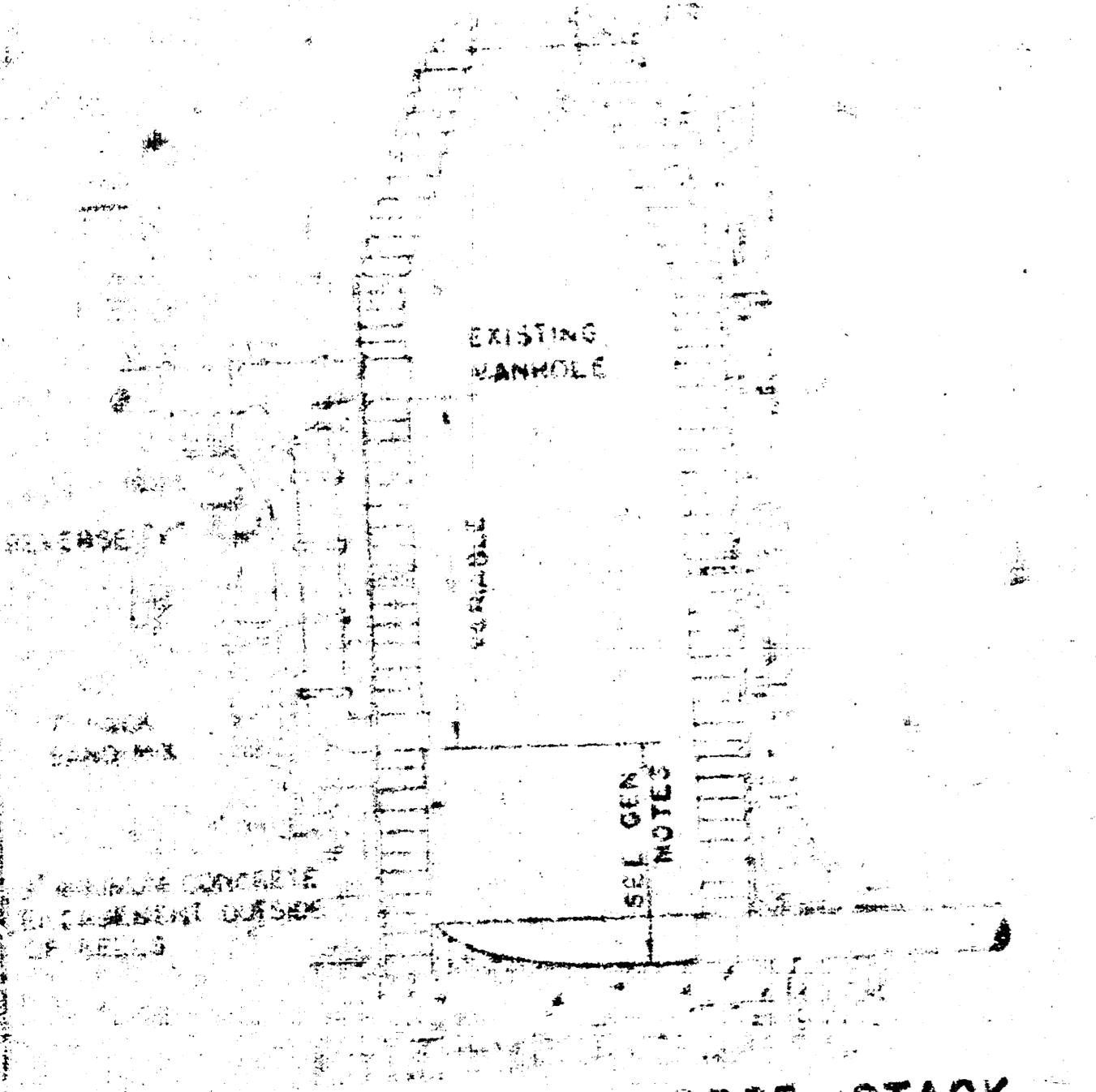
INSIDE DROP MANHOLE TYPE "B"

OUTSIDE DROP MANHOLE TYPE "A"

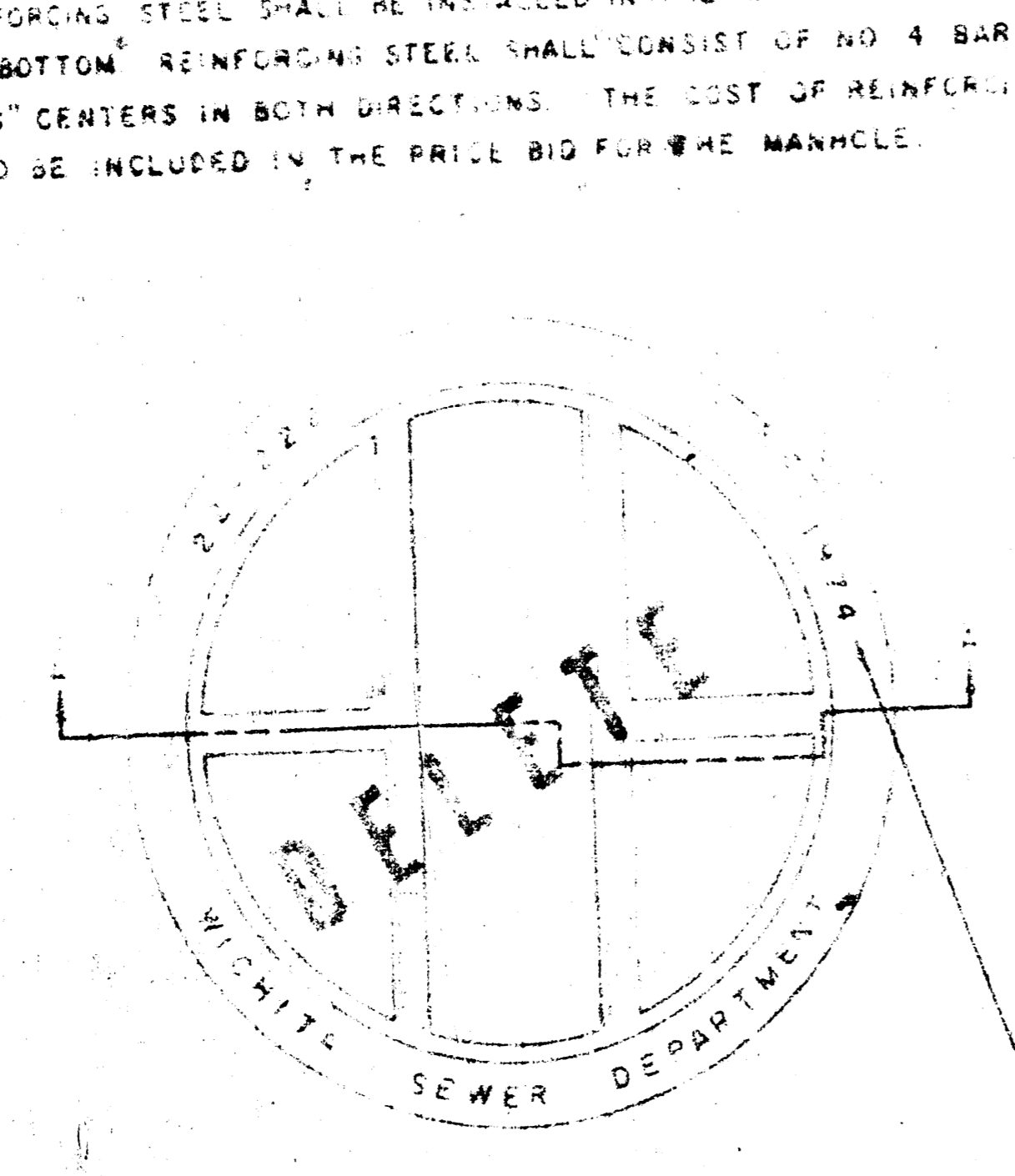
OUTSIDE DROP MANHOLE TYPE "B"

* DRAW-6" ON 5' DIA MH.

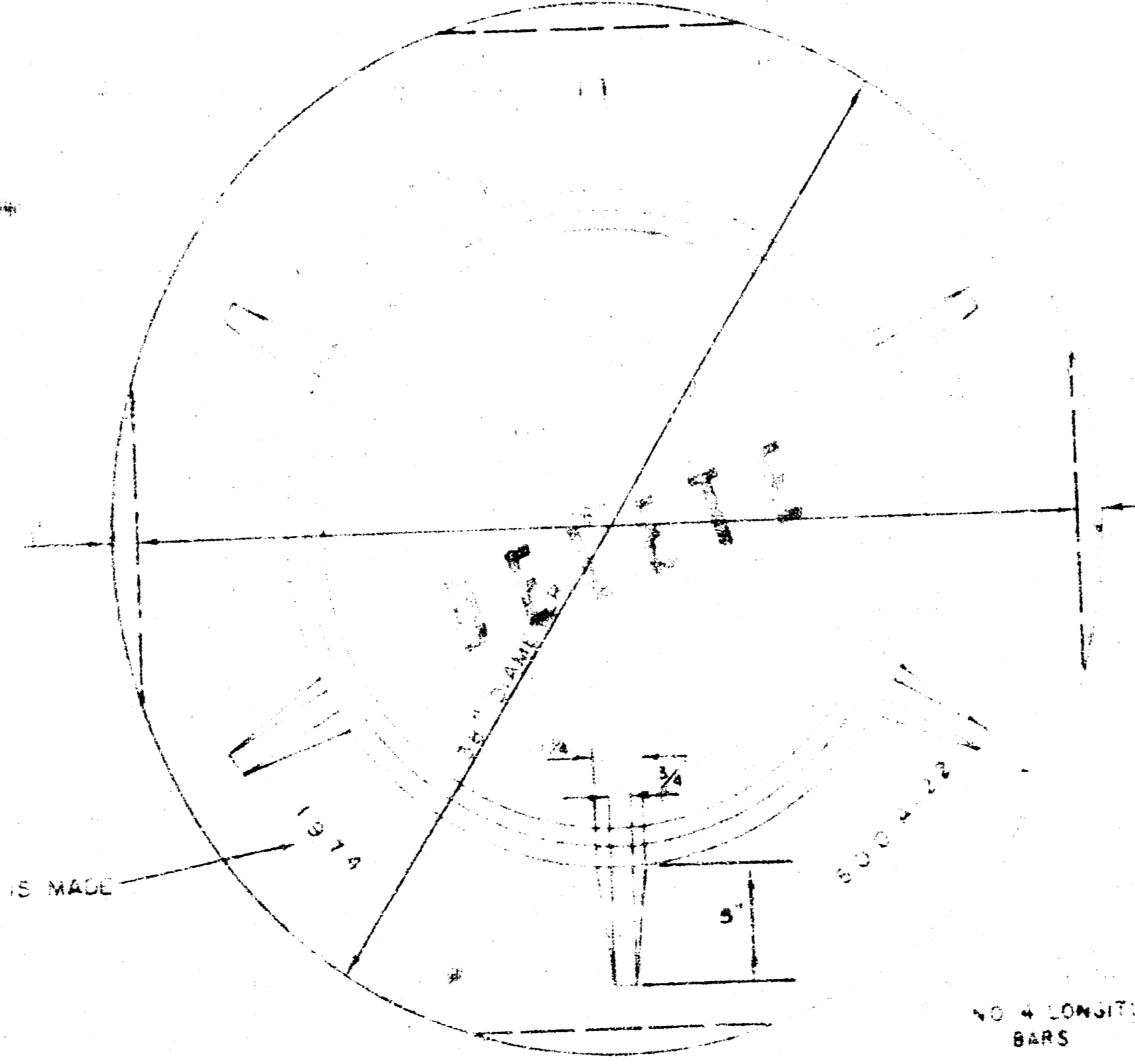
NOTE: REINFORCING STEEL SHALL BE INSTALLED IN THE MANHOLE BASES 6" ABOVE THE BOTTOM. REINFORCING STEEL SHALL CONSIST OF NO. 4 BARS PLACED ON 6" CENTERS IN BOTH DIRECTIONS. THE COST OF REINFORCING STEEL IS TO BE INCLUDED IN THE PRICE BID FOR THE MANHOLE.



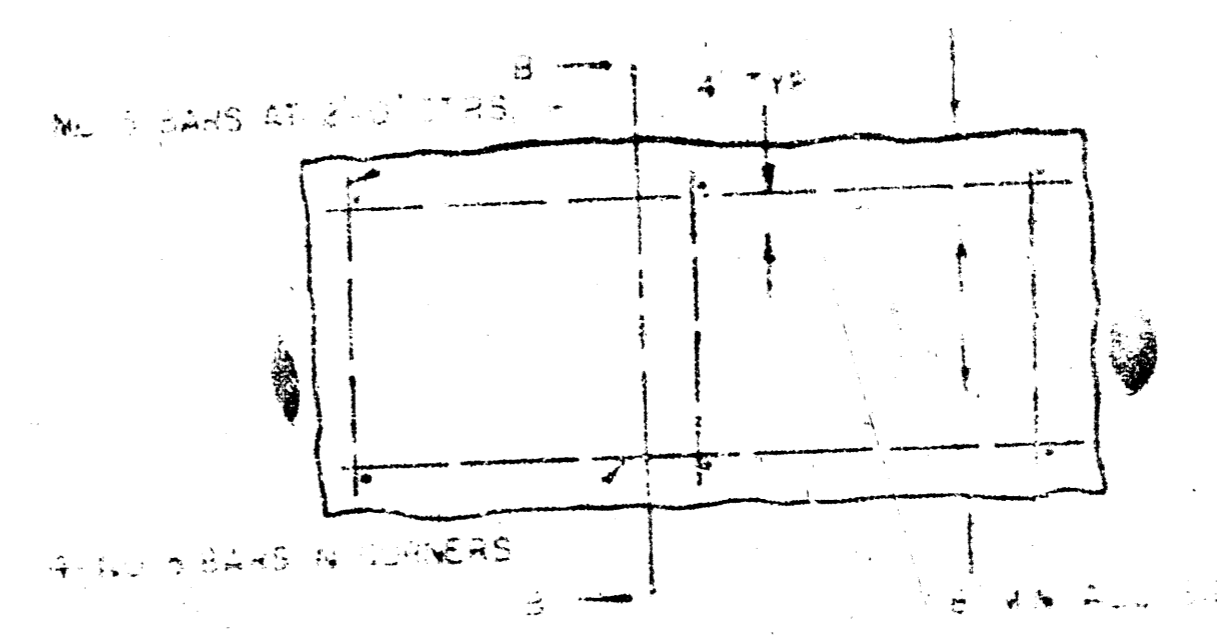
DETAIL OF OUTSIDE DROP STACK
CONSTRUCTED IN EXISTING MANHOLE (USE ONLY WHEN NO OTHER PIPE ARE FLOWING INTO MANHOLE)



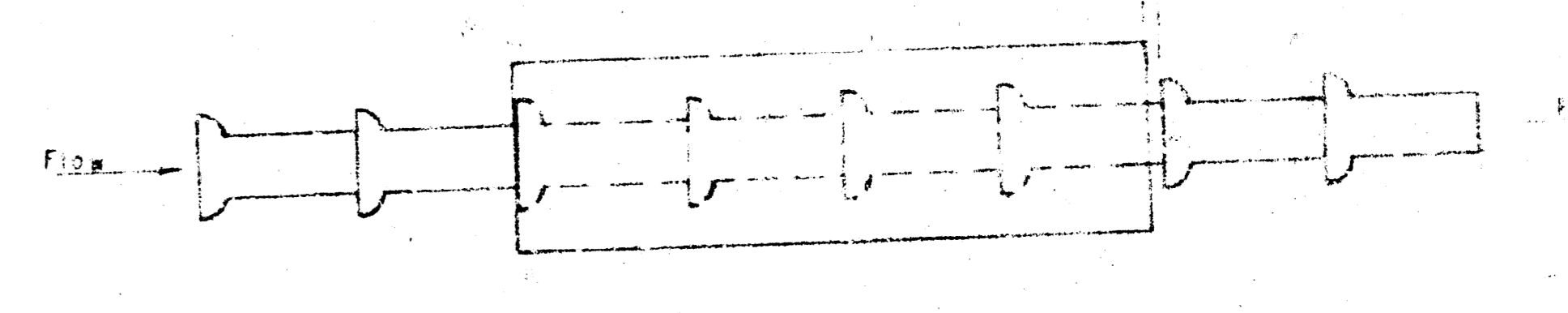
TOP VIEW
MANHOLE COVER
WEIGHT 10 LBS



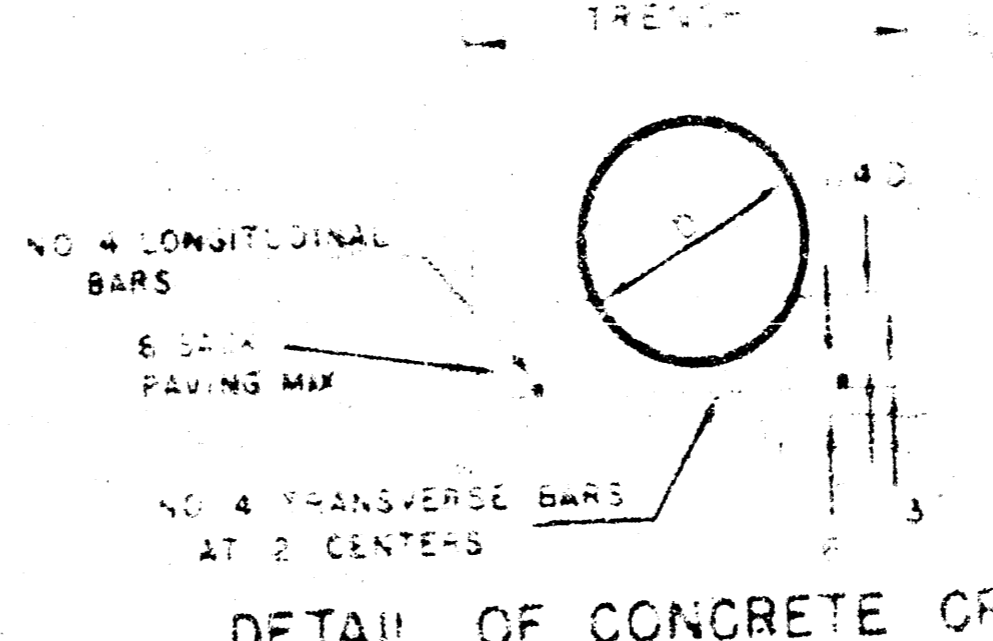
TOP VIEW
MANHOLE RING
WEIGHT 325 LBS RING NO. 500A
WEIGHT 800 LBS RING NO. 500AB



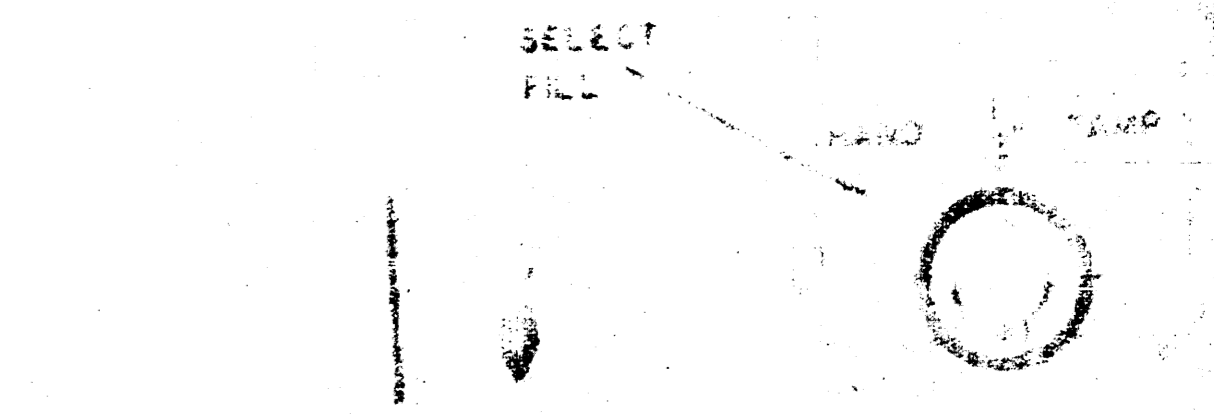
REINFORCED CONCRETE ENCASEMENT



DETAIL IN CONNECTION WITH THE TERMINATION OF CONCRETE ENCASEMENT OR CRADLE FOR CLAY PIPE



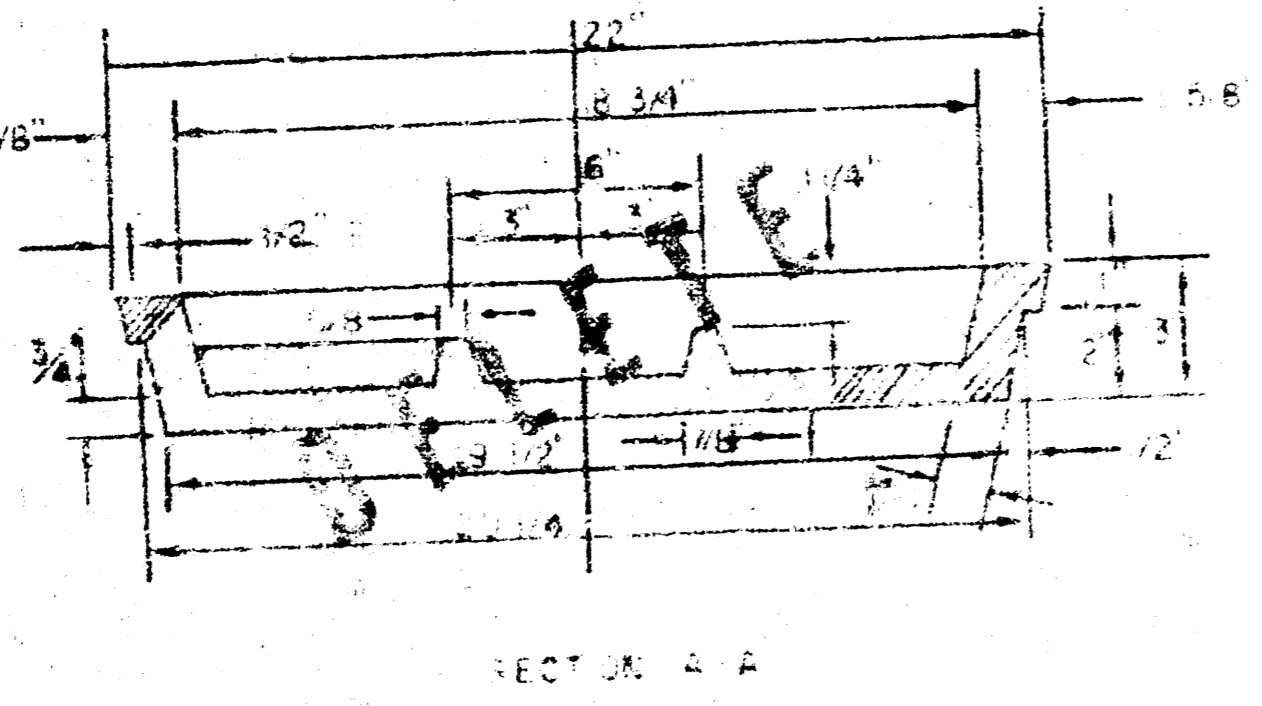
DETAIL OF CONCRETE CRADLE



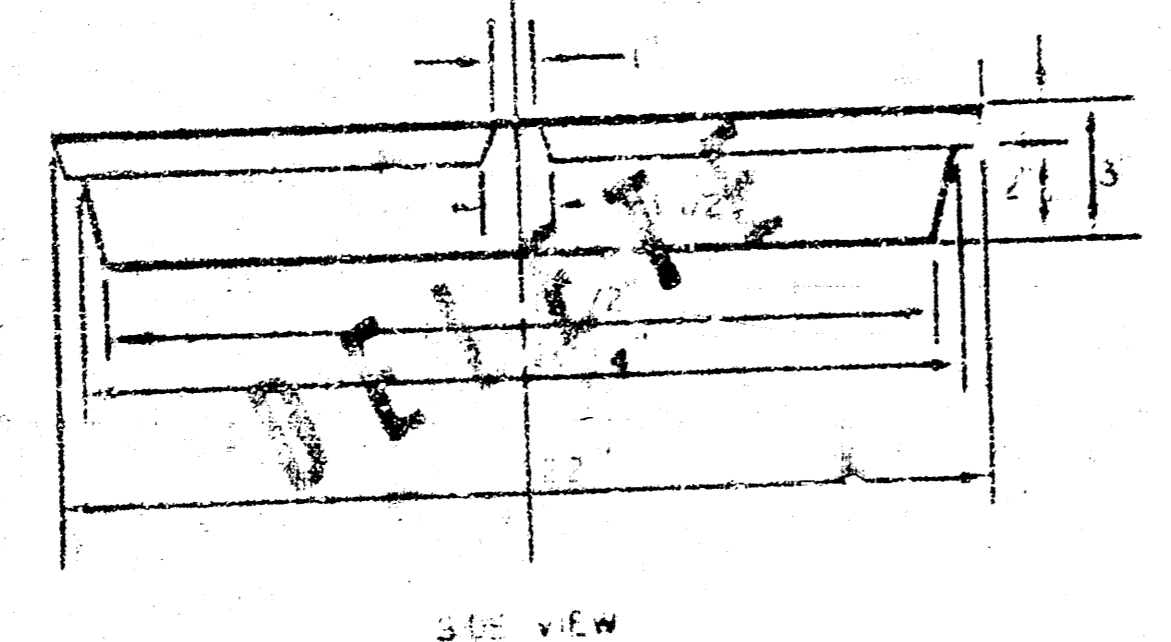
ORDINARY BEDDING METHOD
STURM SEWER PIPE

GENERAL NOTES

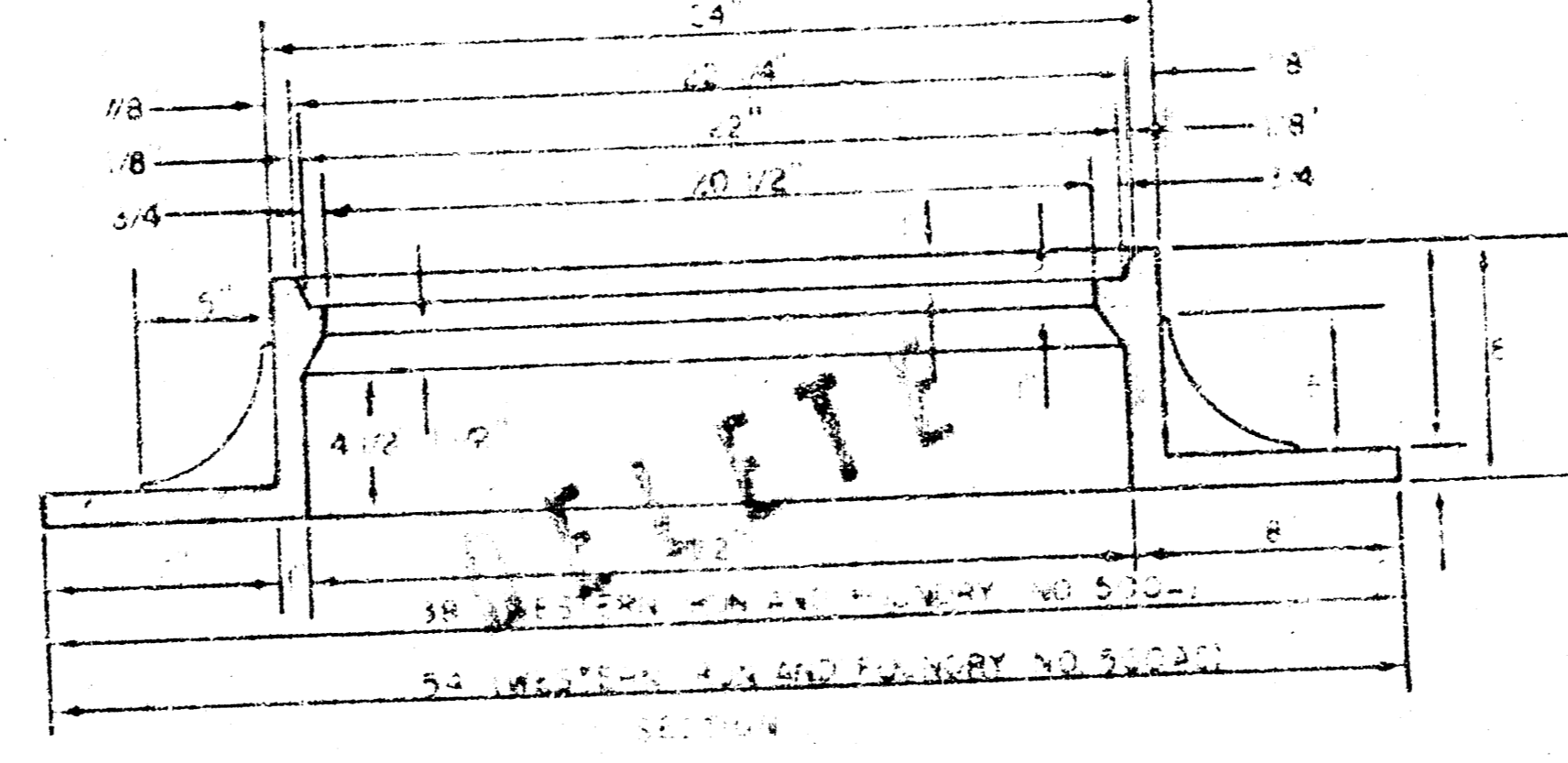
MANHOLE USED IN WASTEWATER CONSTRUCTION SHALL CONTAIN 1000 LBS OF CEMENT PER CUBIC YARD.
STANDARD MANHOLES TYPE "A" OR TYPE "B" AND STANDARD INSIDE DROP MANHOLES TYPE "A" OR TYPE "B" SHALL BE 30" DIA.
STANDARD MANHOLES FOR THE TYPE AND DIAMETER INDICATED ABOVE SHALL BE 30" DIA. STANDARD OUTSIDE DROP MANHOLES FOR THE TYPE AND DIAMETER INDICATED ALL MANHOLE DIMENSIONS WILL BE 3" UNLESS INDICATED OTHERWISE.
MANHOLES WITH PIPE SIZES LARGER THAN 30" SHALL BE 36" DIA.
THE TOP OF ALL MANHOLES SHALL BE SHAPED TO INCREASE HYDRAULIC EFFICIENCY USING 8 SACK SAND MIX CONC.
PIPES INSTALLED WITHIN THE MANHOLE EXCAVATION SHALL BE CRADLED WITH CONCRETE TO THE LIMITS OF THE MANHOLE EXCAVATION. COST OF CRADLE WITHIN MANHOLE EXCAVATION SHALL BE INCLUDED IN THE PRICE BID FOR THE MANHOLE. CRADLE SHALL EXTEND TO FIRST JOINT OUTSIDE OF MANHOLE WHEN CLAY PIPE IS USED.



SECTION A-A
MANHOLE COVER



SIDE VIEW
MANHOLE COVER



MANHOLE RING

OUTSIDE CIRCUMFERENCE OF COVER AND THE INNER FACE AND SEAT OF RING TO BE MATCHING.

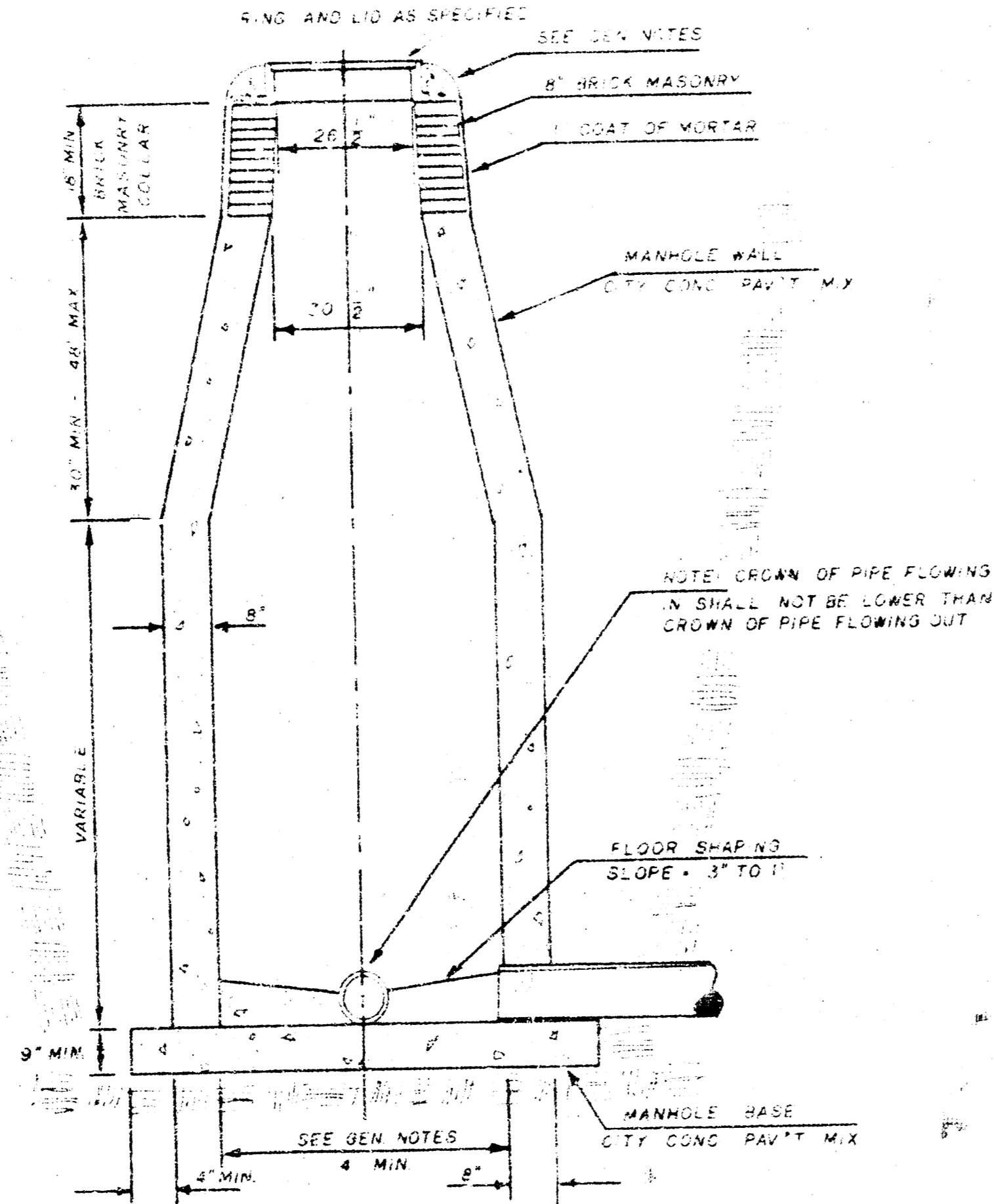
SEWER APPURTENANCES DETAILS

ADOPTED AS STANDARD DESIGN

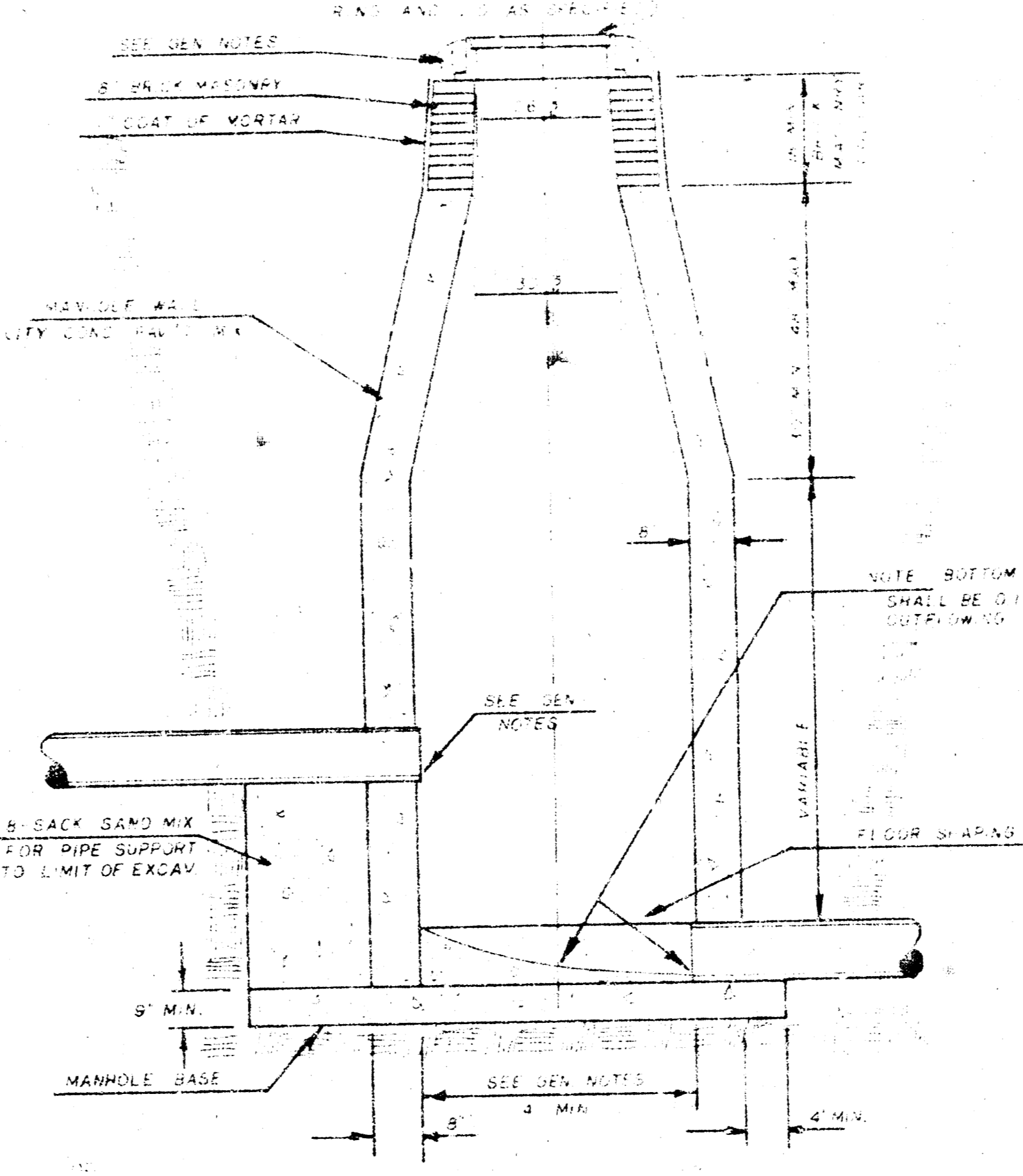
BY

City of Wichita, Kansas

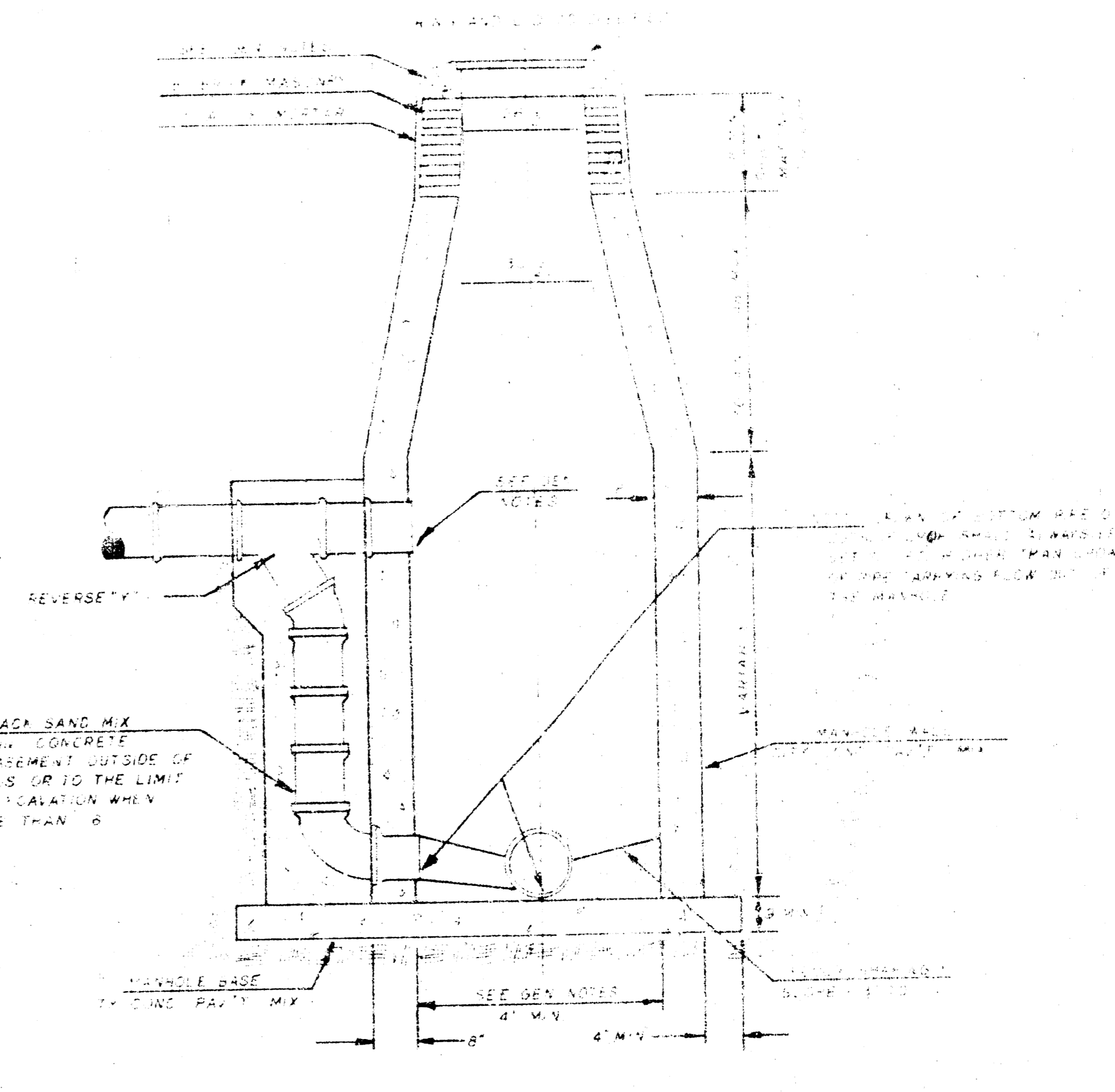
STANDARD MANHOLE TYPE "C"



INSIDE DROP MANHOLE TYPE "C"



OUTSIDE DROP MANHOLE TYPE "C"



1. Before use in sewer construction, manholes shall be tested with water to determine whether they are watertight. Manholes shall be tested with water to determine whether they are watertight. Manholes shall be tested with water to determine whether they are watertight.
2. Manholes shall be constructed in the approved manner. Manholes shall be constructed in the approved manner. Manholes shall be constructed in the approved manner.
3. An opening shall be cut in the manhole wall for the upper level pipe and inside manhole shall be made. The upper level pipe shall be made into this opening with a slope of 1/4 inch per foot. The connection shall be made with an approved standard connection and the connection shall be made.
4. The floor of all manholes shall be made with a slope of 1/4 inch per foot. The floor shall be made with a slope of 1/4 inch per foot. The floor shall be made with a slope of 1/4 inch per foot.

5. The manhole shall be made with a slope of 1/4 inch per foot. The manhole shall be made with a slope of 1/4 inch per foot. The manhole shall be made with a slope of 1/4 inch per foot.
6. The manhole shall be made with a slope of 1/4 inch per foot. The manhole shall be made with a slope of 1/4 inch per foot. The manhole shall be made with a slope of 1/4 inch per foot.
7. The manhole shall be made with a slope of 1/4 inch per foot. The manhole shall be made with a slope of 1/4 inch per foot. The manhole shall be made with a slope of 1/4 inch per foot.
8. The manhole shall be made with a slope of 1/4 inch per foot. The manhole shall be made with a slope of 1/4 inch per foot. The manhole shall be made with a slope of 1/4 inch per foot.

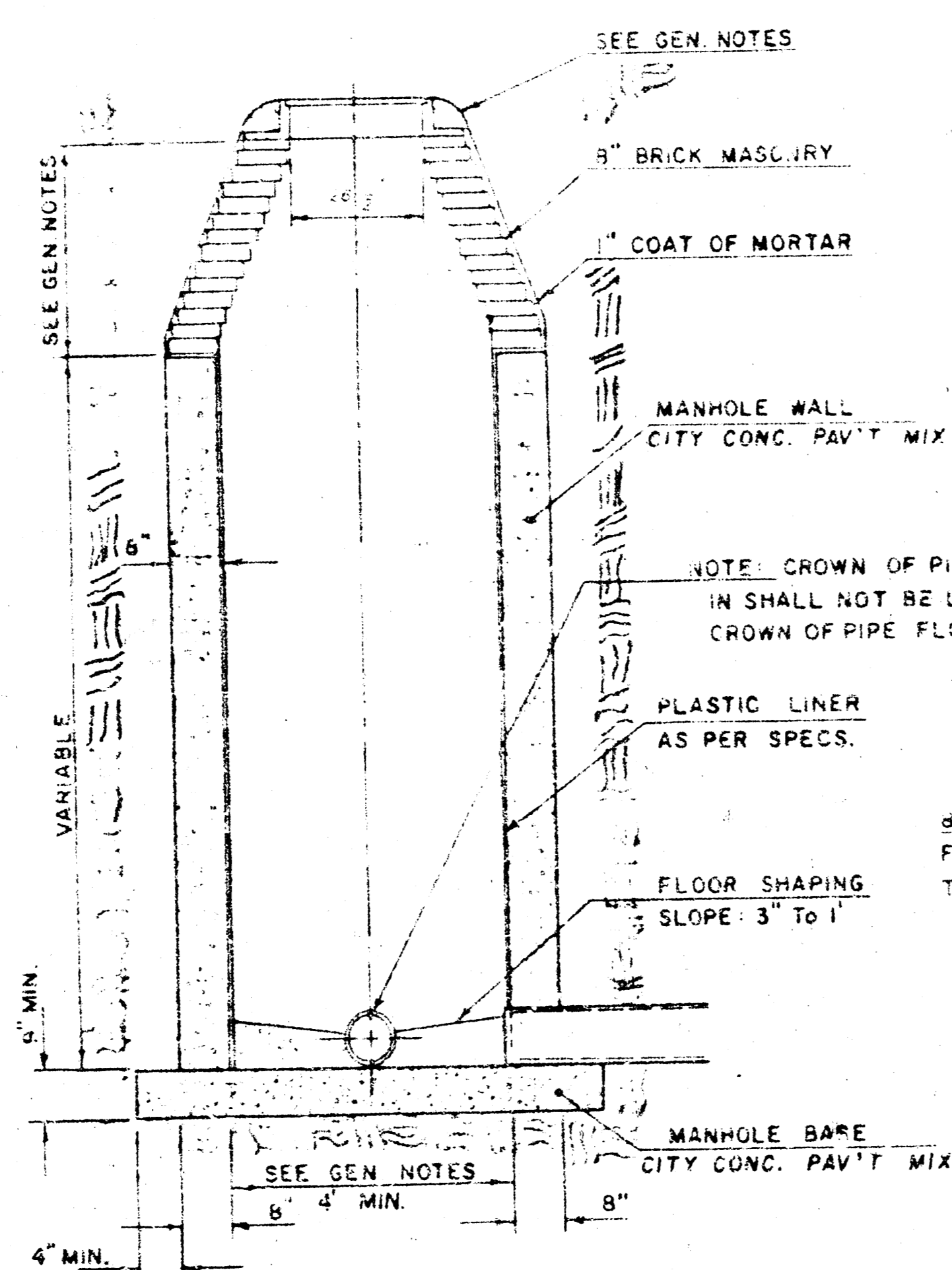
SEWER APPURTENANCES DETAILS

ADOPTED AS STANDARD DESIGN

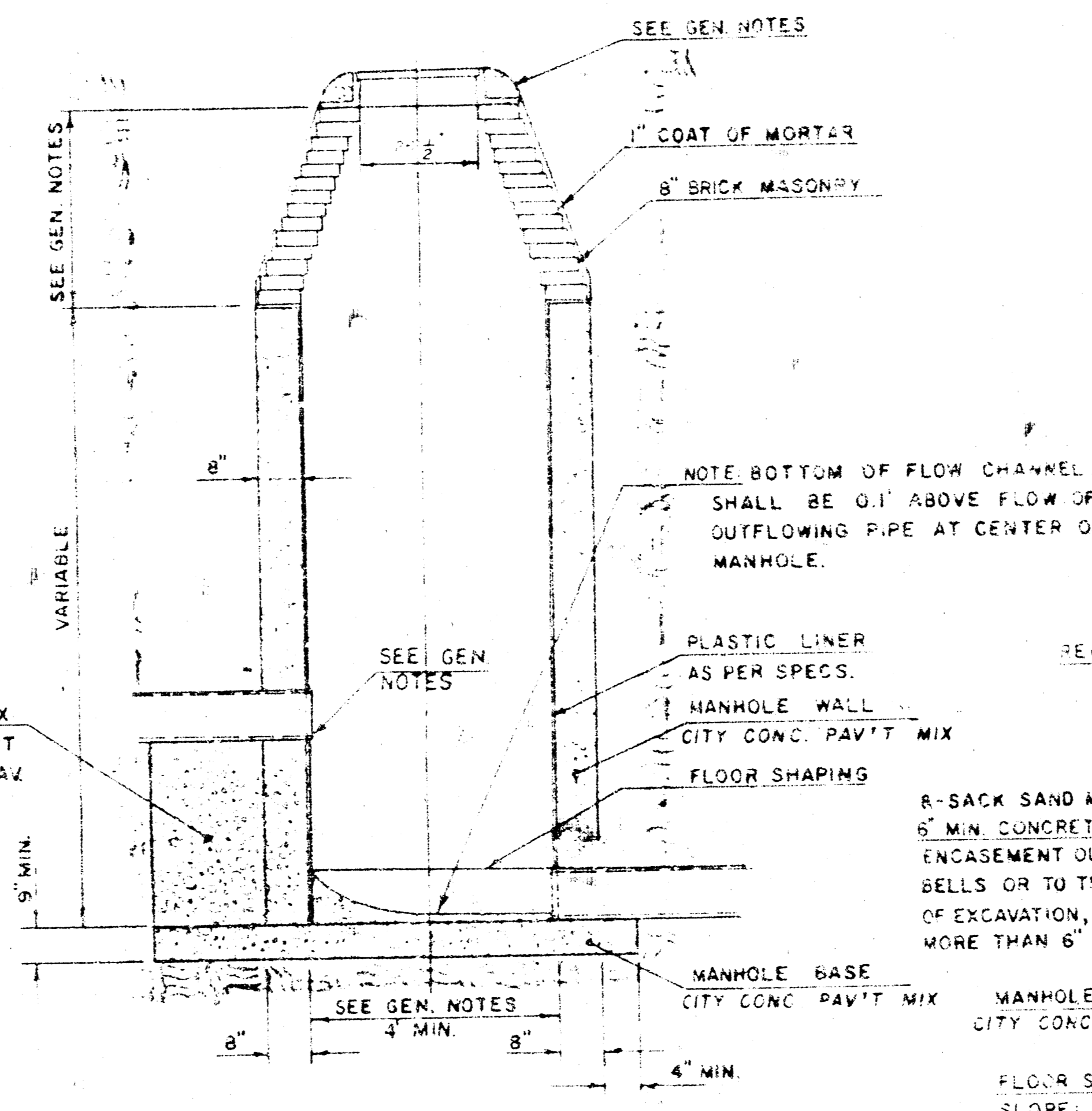
BY

CITY OF WICHITA, KANSAS

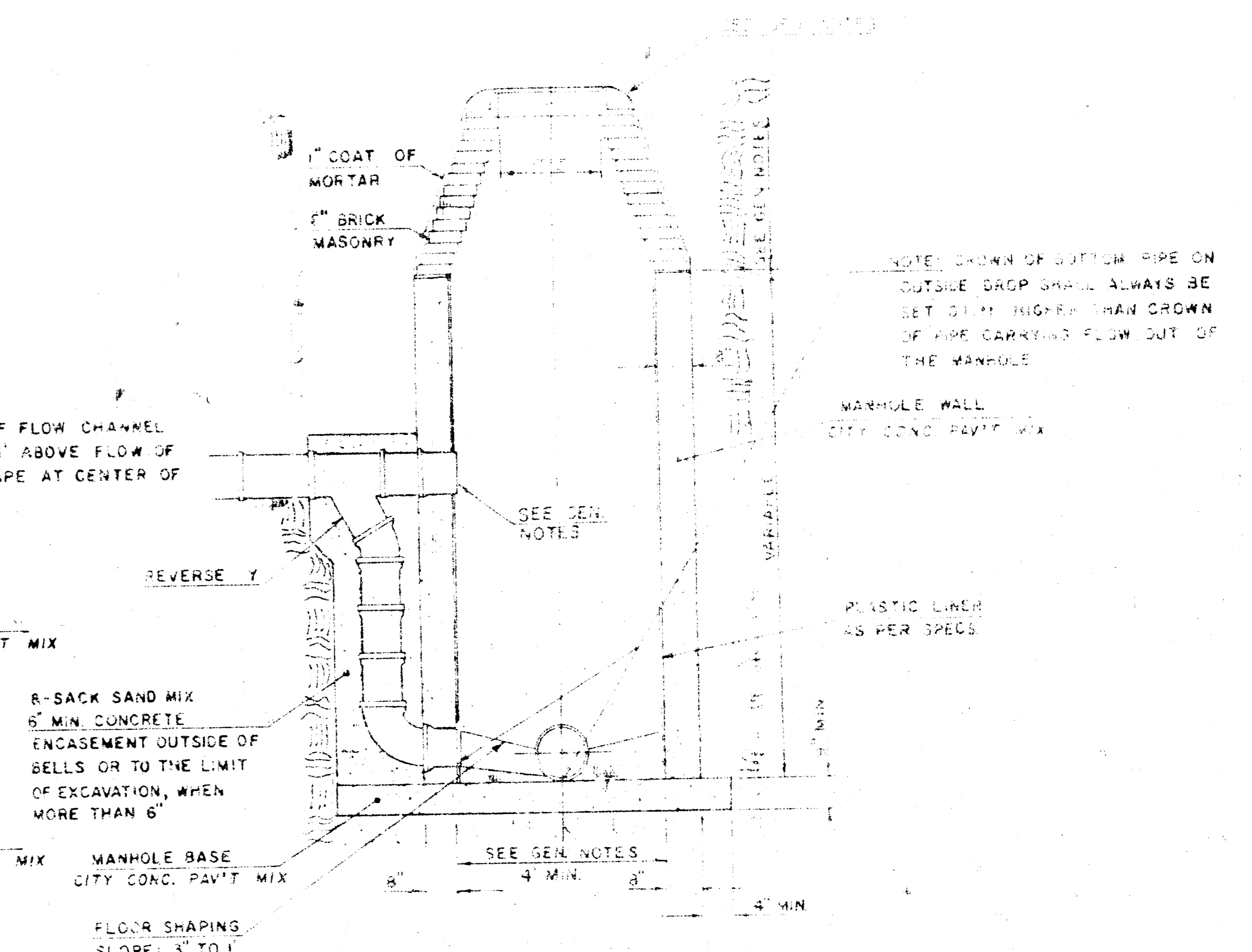
TYPE "D" MANHOLE



TYPE "D" INSIDE DROP MANHOLE



TYPE "D" OUTSIDE DROP MANHOLE



- MORTAR USED IN MASONRY CONSTRUCTION SHALL CONTAIN 1 PART OF PORTLAND CEMENT TO 3 PARTS OF SAND. CONCRETE USED IN MANHOLE WALLS AND BASES SHALL COMPLY WITH THE REQUIREMENTS OF CONCRETE FOR CURB AND GUTTER CONSTRUCTION AS SPECIFIED IN THE CITY OF WICHITA STANDARD SPECIFICATIONS USING CITY UNPAVED PAVEMENT MIX WITHOUT AIR ENTRAINING ADMIXTURE. MORTAR SHALL BE PLACED AGAINST THE MANHOLE WALLS AS SHOWN ON THE DRAWINGS AND CONSTRUCTED IN UNIFORM AREAS. PLASTIC LINING INSIDE THE MANHOLE SHALL COMPLY WITH THE REQUIREMENTS SPECIFIED IN THE STANDARD SPECIFICATIONS FOR PLASTIC LINING FOR REINFORCED DUCTILE IRON PIPE FOR SANITARY SEWER CONSTRUCTION. ALL EXPOSED SURFACES OF THE MANHOLE WALL WHICH WOULD BE EXPOSED TO WATER SHALL BE PROTECTED BY THE PLASTIC LINING. TYPE "D" MANHOLES MAY BE USED ON PIPE SIZES 10" TO 30" WHEN THE MANHOLE DEPTH EXCEEDS THE PERMITTED DROP HEIGHT OF 17' PLUS THE OUTSIDE DIAMETER OF THE LARGEST PIPE IN THE MANHOLE. MANHOLES CONSTRUCTED WHERE PIPE SIZES ARE DIFFERENT SHALL HAVE A DIAMETER OF 4'. MANHOLES CONSTRUCTED WHERE THE PIPE SIZES ARE 24" OR LARGER SHALL HAVE A DIAMETER OF 9'. THE HEIGHT OF THE CURBS ON 4' DIAMETER MANHOLES SHALL BE 4'. MANHOLES HAVING A DIAMETER OF 9' SHALL HAVE CURBS 6' IN HEIGHT. SIMPLE OR MANHOLE SHALL BE WITHOUT CURBS AND WITH 12" TYP.
- REINFORCING STEEL SHALL BE INSTALLED IN THE MANHOLE WALLS. REINFORCING STEEL SHALL BE PLACED ON TOP OF EACH COURSE OF BRICKS IN WALLS AND SHALL BE PLACED AT LEAST 1" ABOVE THE SURFACE OF THE MORTAR. REINFORCING STEEL SHALL BE PLACED AT LEAST 1" FROM THE SURFACE OF THE MORTAR. REINFORCING STEEL SHALL BE PLACED AT LEAST 1" FROM THE SURFACE OF THE MORTAR.
- AN 8" DIA. PIPE SHALL BE INSTALLED IN THE MANHOLE WALLS FOR THE PURPOSE OF PROVIDING A DRAINAGE FOR WATER WHICH MAY ACCUMULATE IN THE MANHOLE. THIS DRAINAGE PIPE SHALL BE INSTALLED INTO THE MANHOLE WITH AN APPROXIMATE SLOPE OF 1/8" PER FOOT. THE DRAINAGE PIPE SHALL BE INSTALLED WITH AN APPROXIMATE SLOPE OF 1/8" PER FOOT. THE DRAINAGE PIPE SHALL BE INSTALLED WITH AN APPROXIMATE SLOPE OF 1/8" PER FOOT.

- THE BOTTOM OF THE FLOW CHANNEL SHALL BE 0.1' ABOVE THE FLOW OF THE OUTFLOWING PIPE AT CENTER OF MANHOLE.
- PLASTIC LINING SHALL BE INSTALLED AS PER SPECS.
- MANHOLE WALL SHALL BE CITY CONC. PAV'T MIX.
- FLOOR SHAPING SHALL BE AS PER SPECS.
- MANHOLE BASE SHALL BE CITY CONC. PAV'T MIX.
- MANHOLE WALL SHALL BE CITY CONC. PAV'T MIX.
- PLASTIC LINING SHALL BE AS PER SPECS.
- MANHOLE WALL SHALL BE CITY CONC. PAV'T MIX.
- FLOOR SHAPING SHALL BE AS PER SPECS.
- MANHOLE BASE SHALL BE CITY CONC. PAV'T MIX.
- MANHOLE WALL SHALL BE CITY CONC. PAV'T MIX.
- PLASTIC LINING SHALL BE AS PER SPECS.
- MANHOLE WALL SHALL BE CITY CONC. PAV'T MIX.
- FLOOR SHAPING SHALL BE AS PER SPECS.
- MANHOLE BASE SHALL BE CITY CONC. PAV'T MIX.

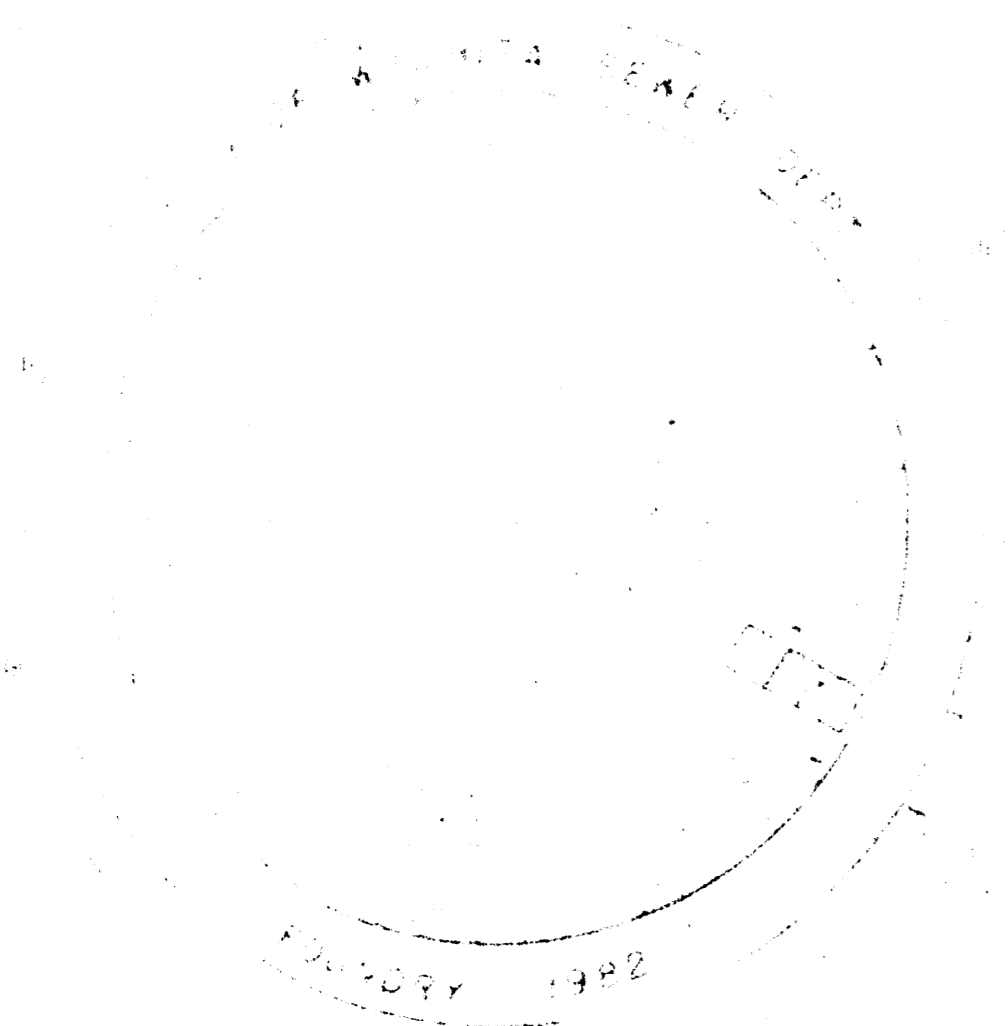
MANHOLE FRAME AND COVER DETAIL

ADOPTED AS STANDARD DESIGN

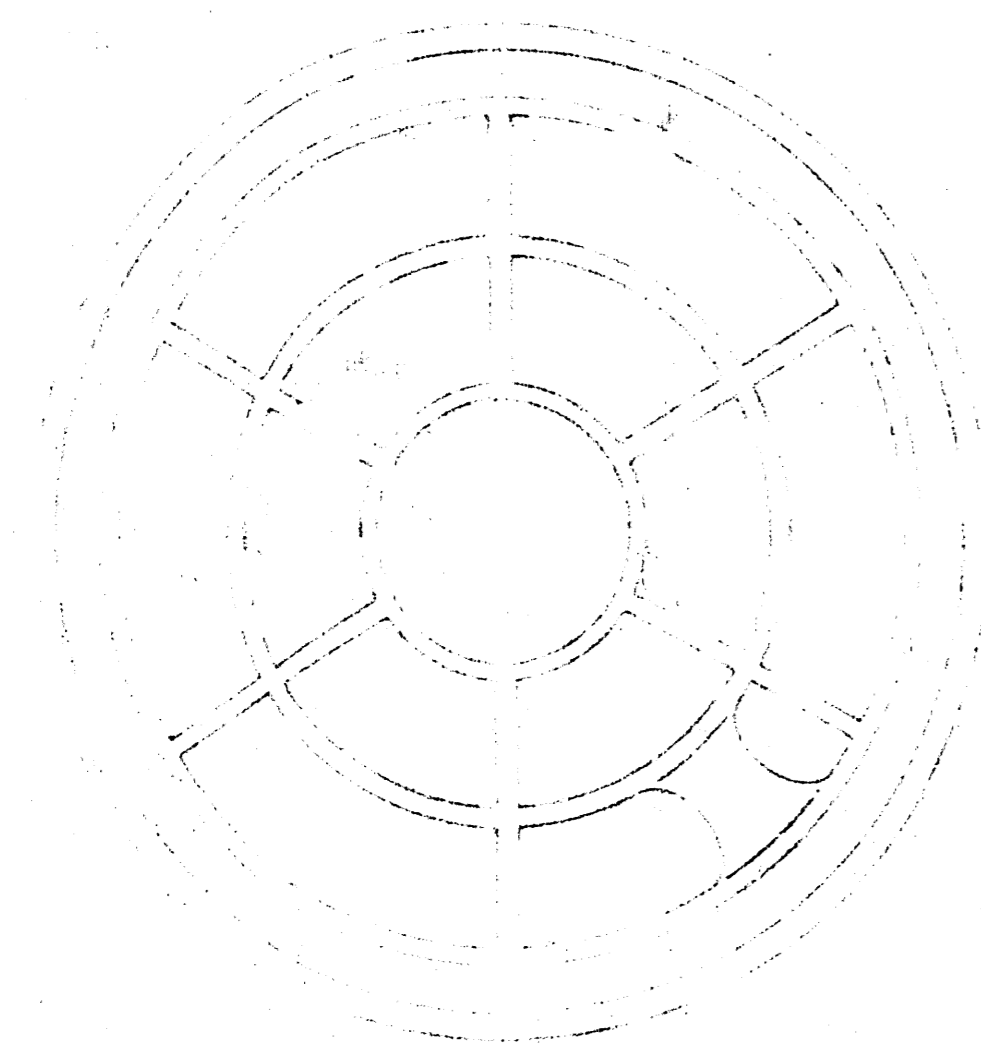
BY

City of Wichita, Kansas

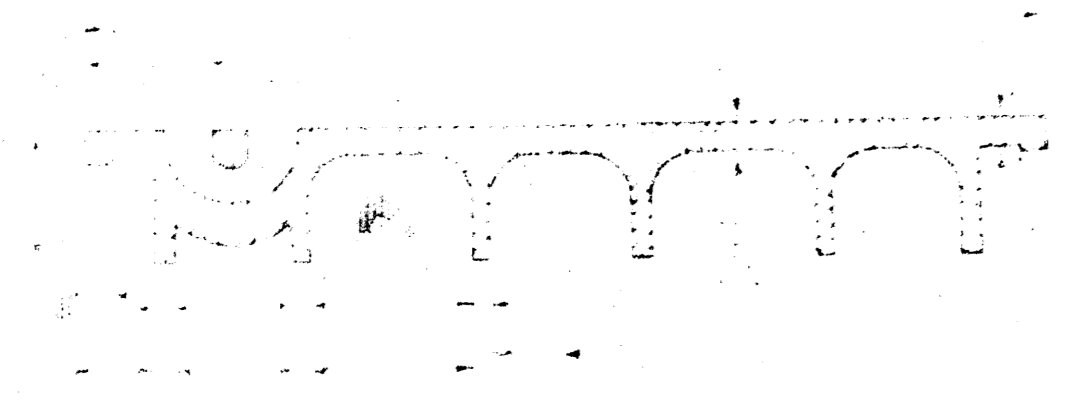
MANHOLE COVER
A-17



TOP VIEW

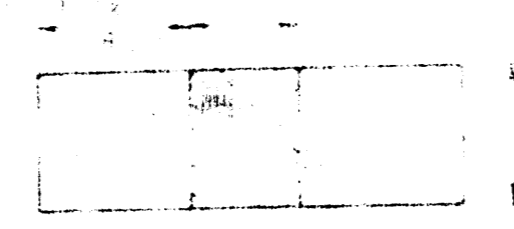


BOTTOM VIEW



SECTION VIEW

PICKHOLE DETAIL

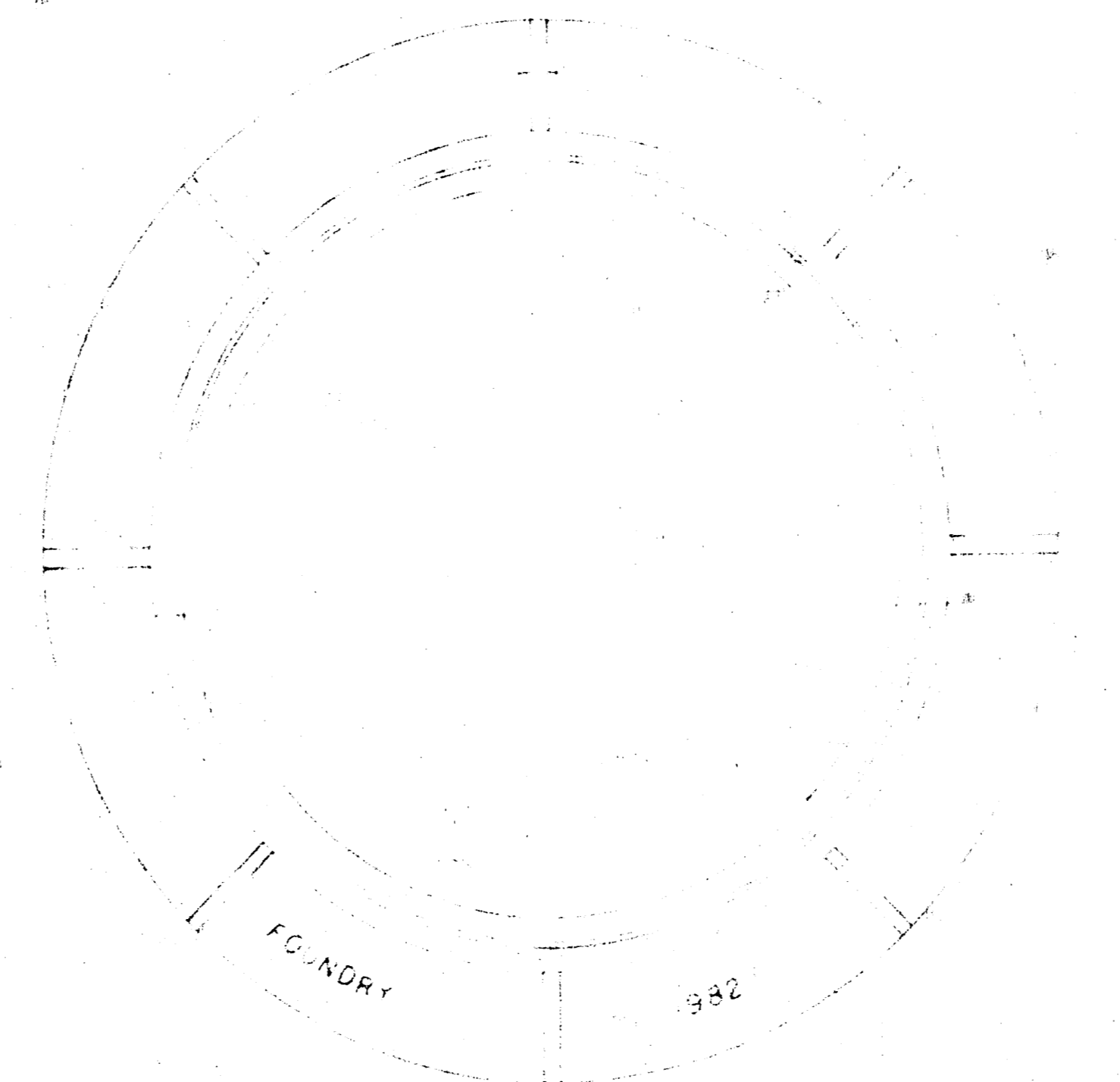


TOP VIEW

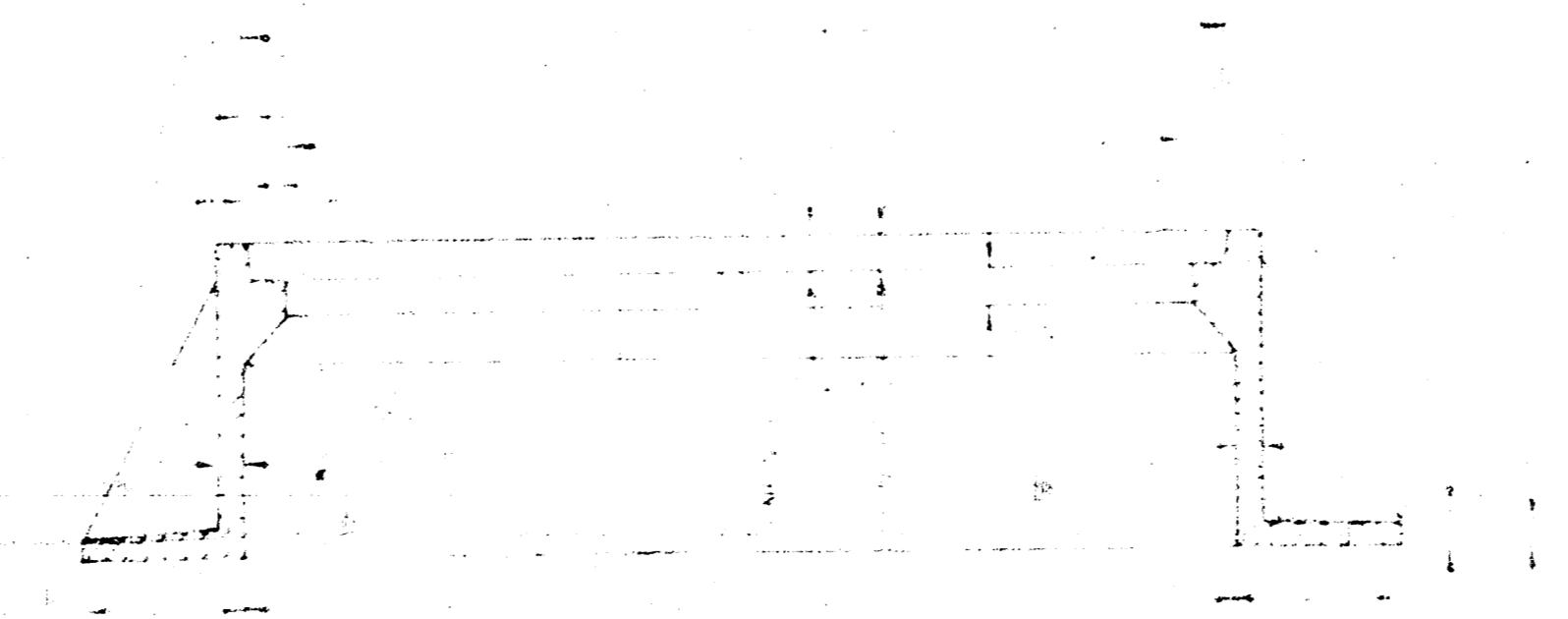


SECTION VIEW

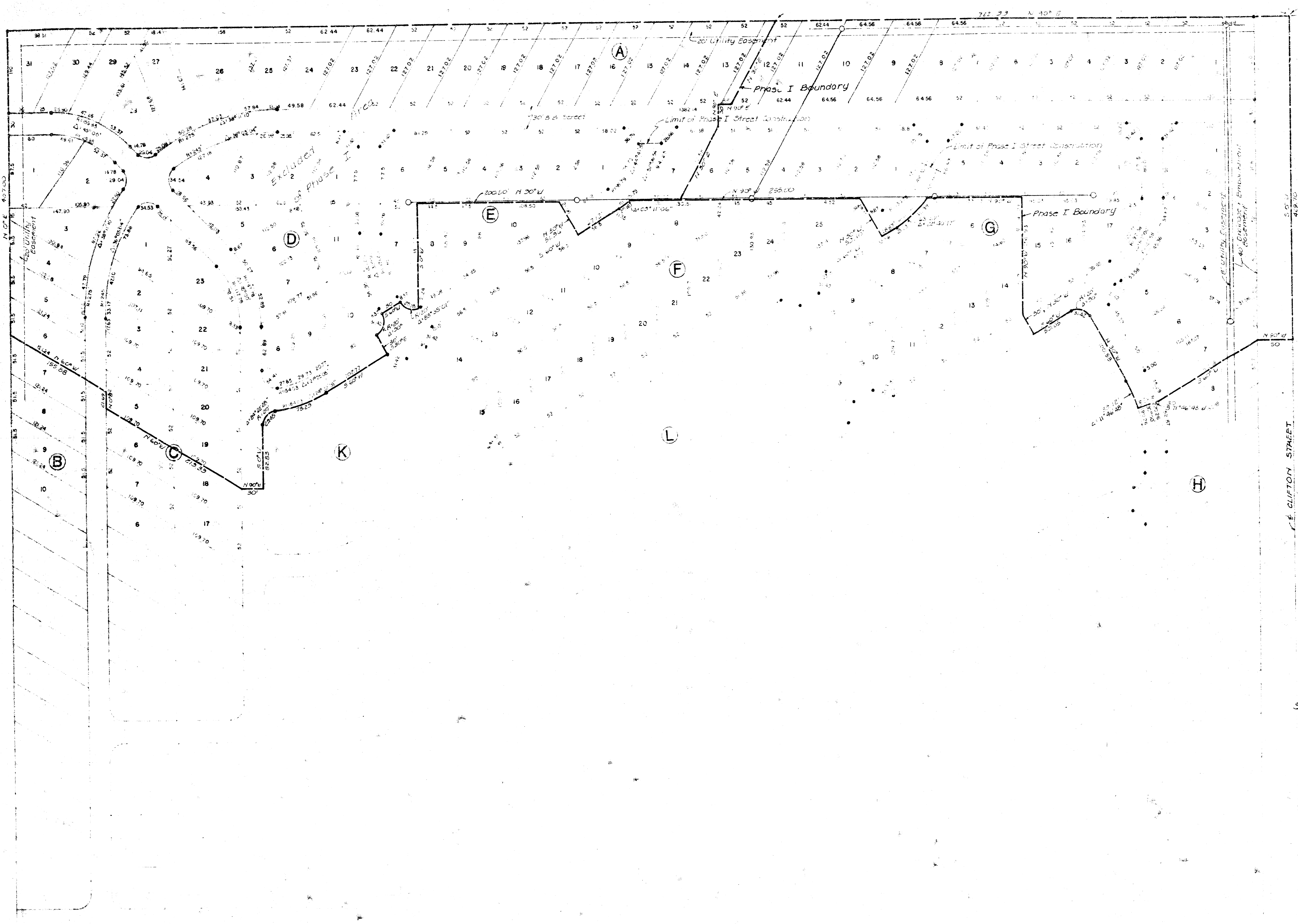
MANHOLE FRAME
A-18



TOP VIEW



SECTION A-A



↑
 NORTH
 Scale: 1" = 60'

PHASE 1 - Pinaire Mobile Home Park

Sedgwick County, Kansas
 2-16-82

D B 8/8