

NOTES

- CONTRACTOR TO:
- MAKE EXCAVATION
 - POUR CONCRETE PAD
 - CONSTRUCT WET WELL
 - NOTIFY SUPPLIER WHEN READY FOR INSTALLATION SUPERVISION
 - SET PUMPING STATION
 - FURNISH & INSTALL SUCTION LINES
 - FURNISH & INSTALL DISCHARGE LINE
 - WELD ENTRANCE TUBE TO PUMPING CHAMBER
 - BUILD UP BOTTOM OF WET WELL TO BOTTOM OF SUCTION PIPES WITH CONCRETE
 - SLOPE SIDES OF WET WELL AT BOTTOM AS SHOWN WITH COARSE ROCK AGGREGATE AND STIFF GROUT
 - INSTALL AIR BUBBLER PIPE
 - ARRANGE FOR ELECTRICAL SERVICE CONNECTION
 - BACK FILL EXCAVATION
- SUPPLIER SHALL FURNISH:
- PUMPING CHAMBER & ENTRANCE TUBE F.O.B. JOB SITE
- ENGINEER TO SUPERVISE INSTALLATION. START UP UNIT. MAKE ALL NECESSARY ADJUSTMENTS.

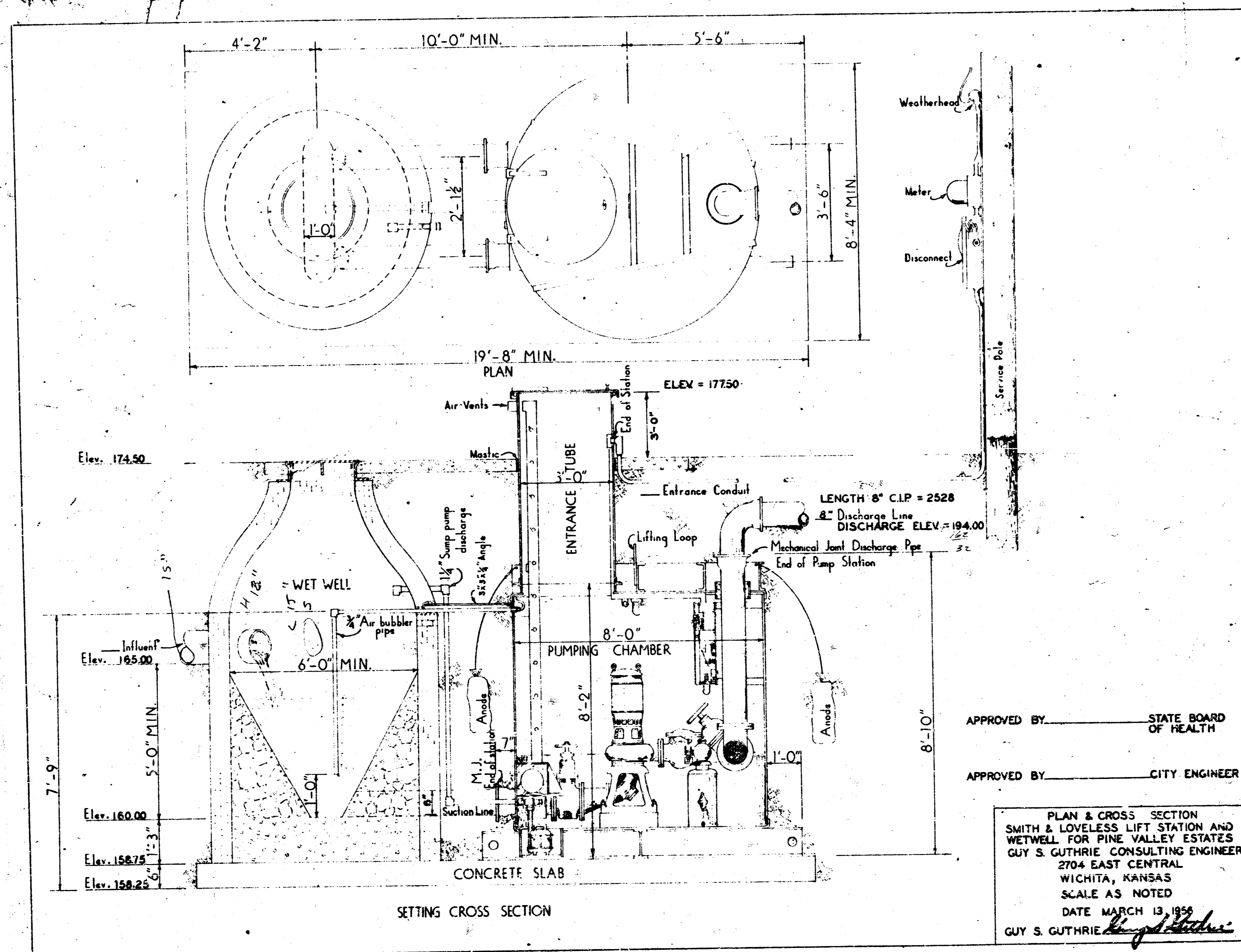
APPROVED BY _____ STATE BOARD OF HEALTH

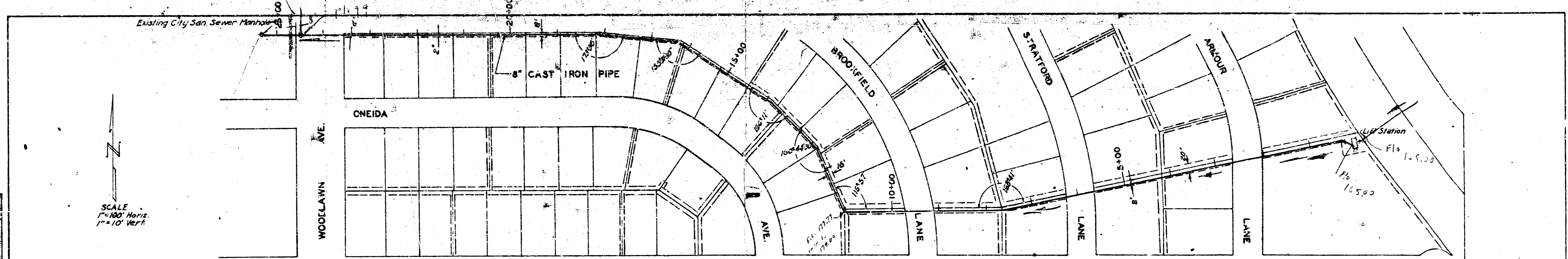
APPROVED BY _____ CITY ENGINEER

PLAN & ELEV. LIFT STATION AND WETWELL FOR PINE VALLEY ESTATES

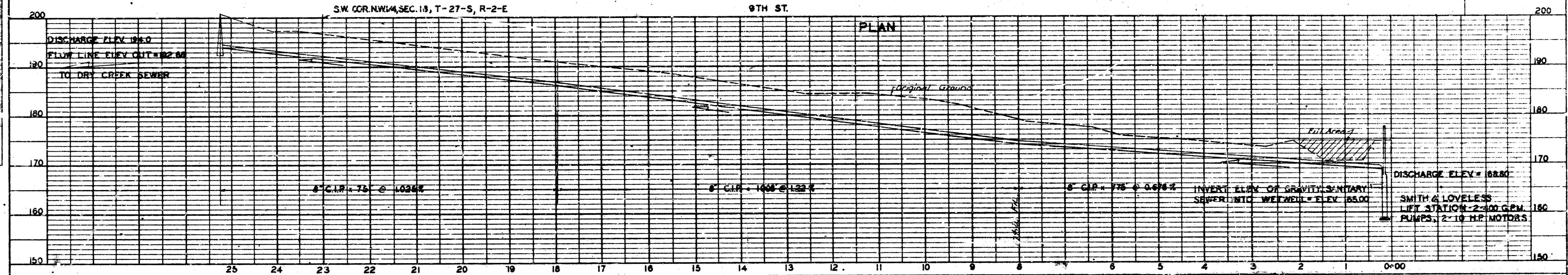
GUY S. GUTHRIE CONSULTING ENGINEER

GUY S. GUTHRIE *Guy S. Guthrie* SCALE AS NOTED DATE MARCH 13, 1956





PLAN
 SHEET NO. 1
 DATE: 3/12/25
 DRAWN BY: GUY S. GUTHRIE
 CHECKED BY: [Signature]
 NOTE BOOK NO. 11410
 NO. 1



PROFILE
 SHEET NO. 2
 DATE: 3/12/25
 DRAWN BY: GUY S. GUTHRIE
 CHECKED BY: [Signature]
 NOTE BOOK NO. 11410
 NO. 2

PROFILE

APPROVED BY _____ STATE BOARD OF HEALTH
 APPROVED BY _____ CITY ENGINEER

PLAN & PROFILE
 TEMPORARY 8 INCH FORCE
 LINE AND LIFT STATION
 PINE VALLEY ESTATES

GUY S. GUTHRIE, CONSULTING ENGINEER
 2714 EAST CENTRAL
 WICHITA, KANSAS

SCALE AS NOTED
 DATE: MARCH 12, 1925
 GUY S. GUTHRIE [Signature]