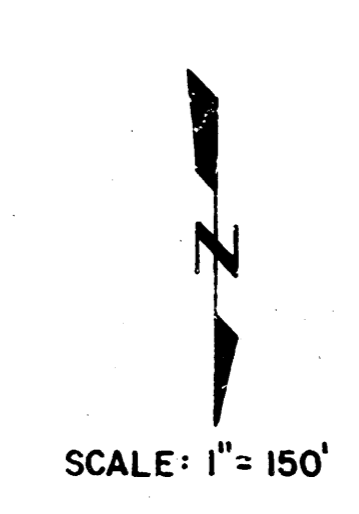
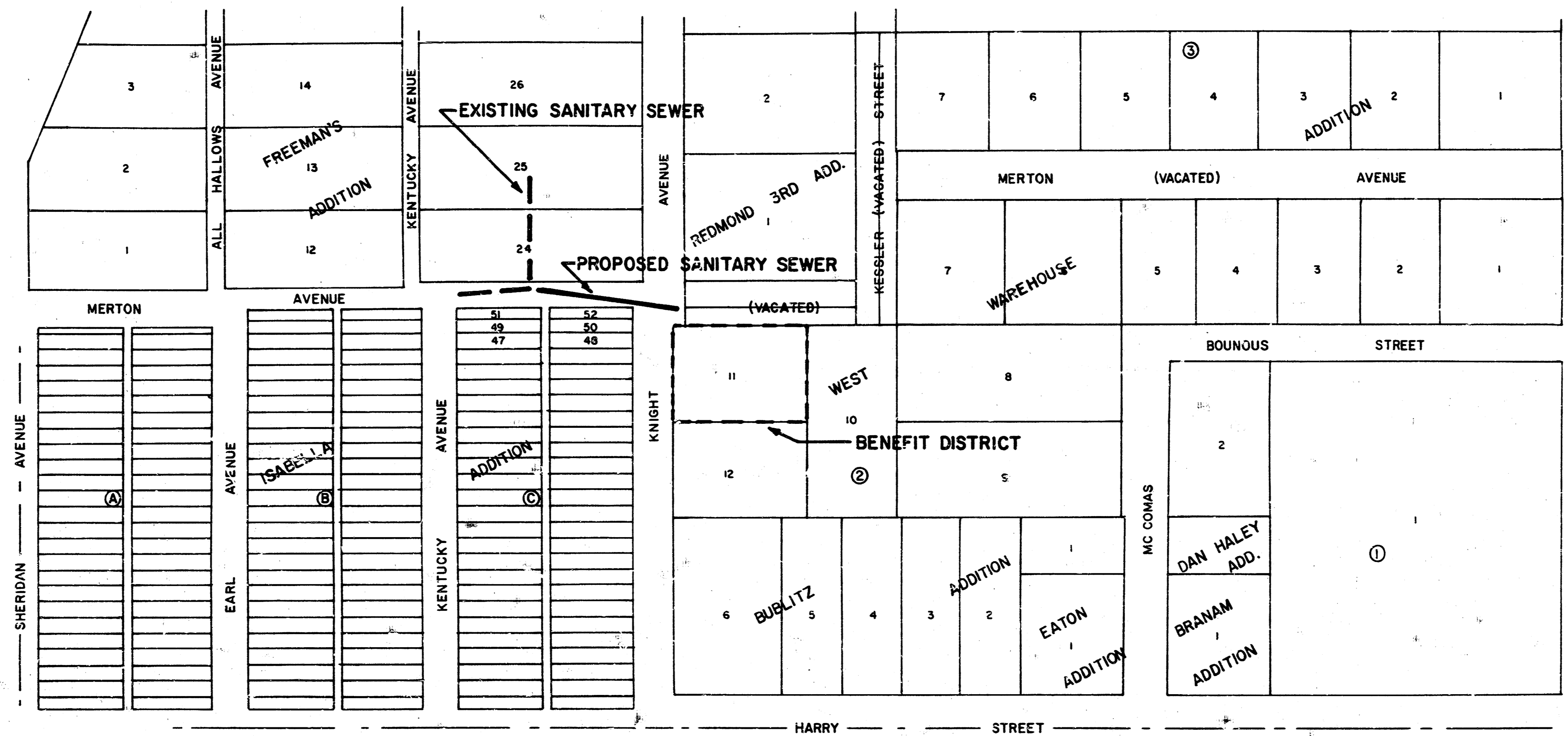


PROJECT NO. 468-76-245-80001-000-000-132

CITY OF WICHITA, KANSAS

MICHAEL E. LINDEBAK, CITY ENGINEER

AUGUST, 1987



SCALE: 1" = 150'

APPROVED AS NOTED
 By CITY ENGINEER OF WICHITA
 Sanitary Sewers MLK 8/2/87
 Storm Sewers _____
 Driveway Approaches _____
 Water Mains _____
 Paving _____

NOTE TO CONTRACTOR

This project will be constructed under the supervision of the CITY ENGINEER and conforming to the SPECIFICATIONS of the CITY OF WICHITA. The CONTRACTOR will pay the City of Wichita for all costs of public utility inspection and booking per contract.

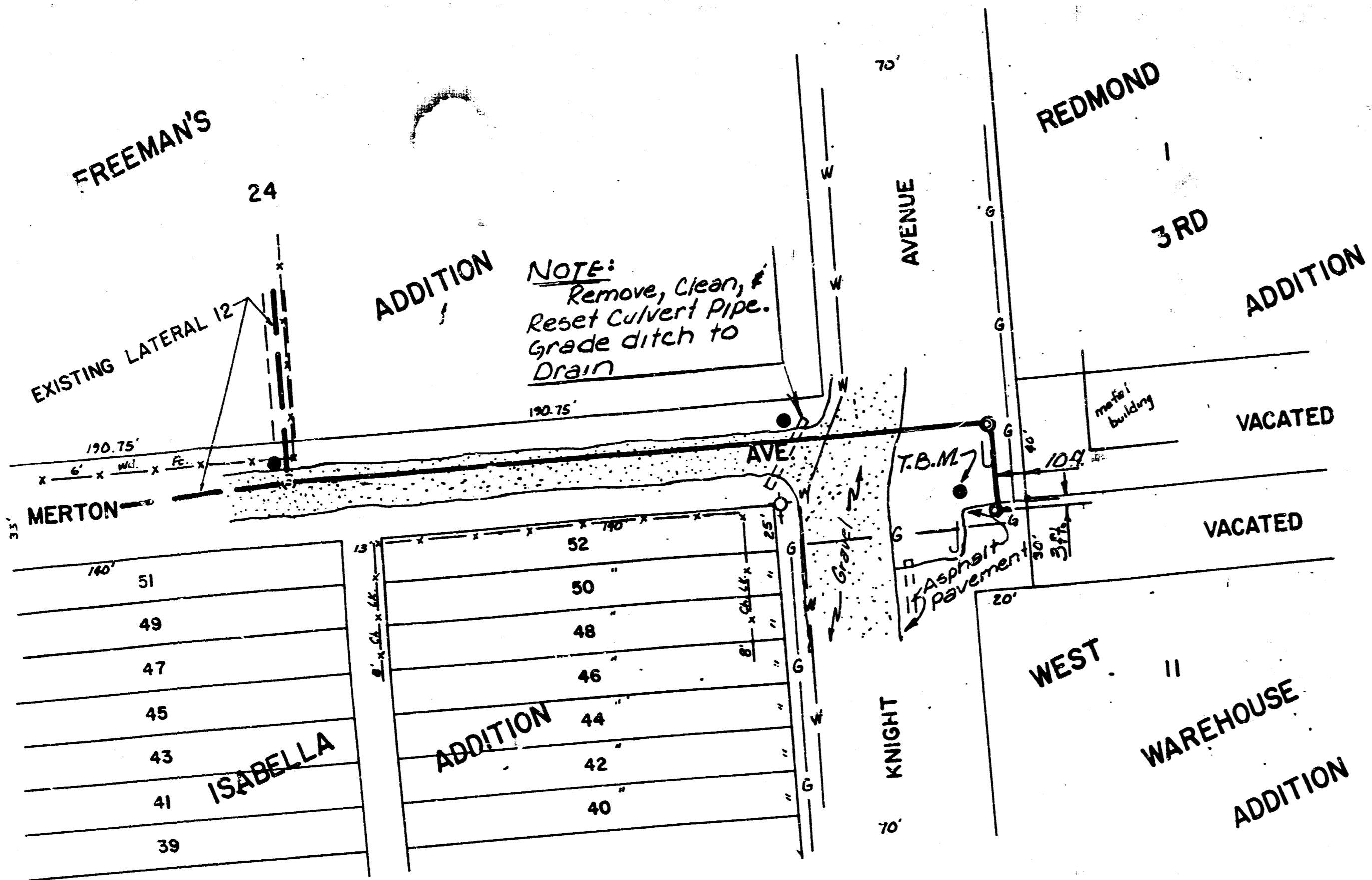
NOTE:
 THE CITY OF WICHITA WILL AIR TEST AND TELEWISE THE NEW LINE PRIOR TO ACCEPTANCE.

WICHITA, KANSAS	
SANITARY SEWER EXTENSIONS	
MAP AND BENEFIT DISTRICT	
PROJECT NO. 468-76-245-80001-000-000-132	
PLASTIC FABRICATION CO.	
CASTLE & ASSOCIATES ENGINEERS WICHITA, KANSAS	DSGLJK DR LMK CH
DATE August 1987	DWG FILE NO 8738-D-60,047
APP	SHEET NO 1 OF 1/2

FILMED FROM THE BEST AVAILABLE COPY

DATE	
BY	
NO.	
DATE	
BY	
NO.	
DATE	
BY	
NO.	
DATE	
BY	
NO.	

DATE	
BY	
NO.	
DATE	
BY	
NO.	
DATE	
BY	
NO.	
DATE	
BY	
NO.	

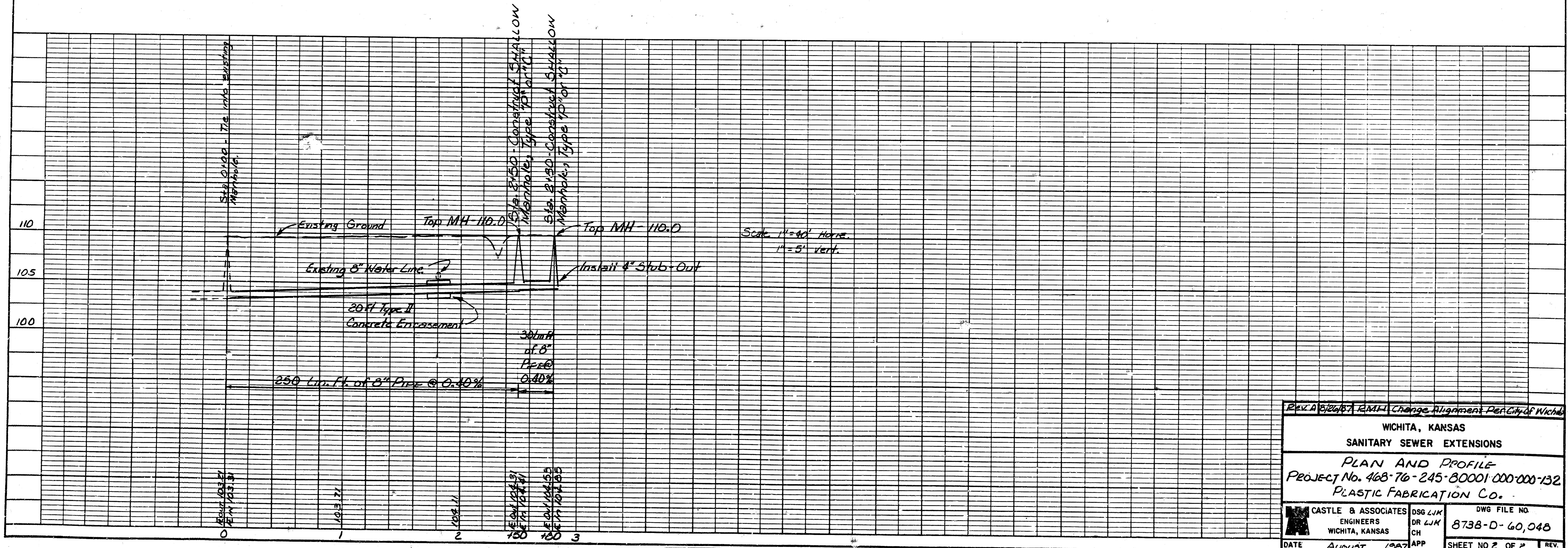
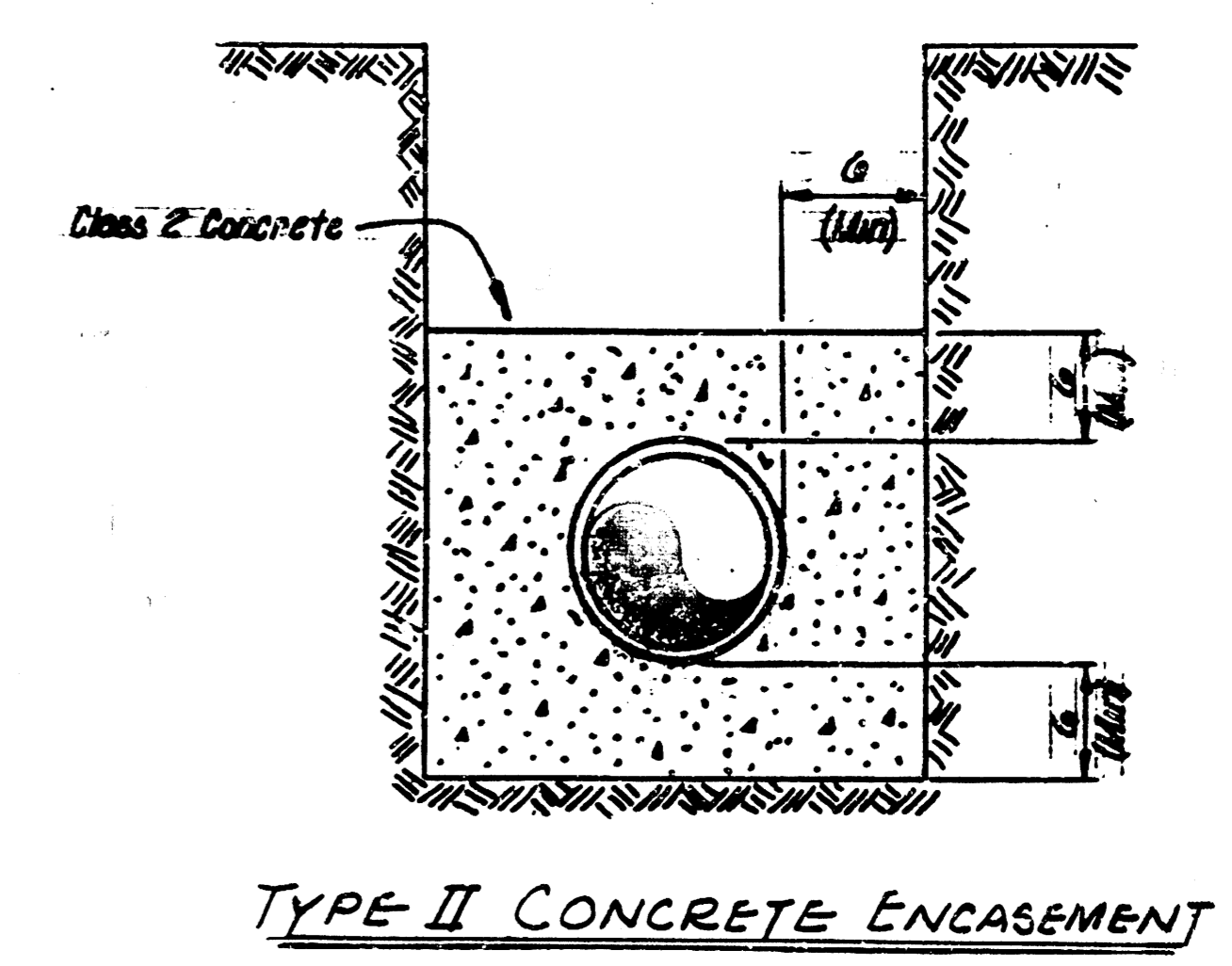


LEGEND

- - PROPERTY IRON FOUND
- - POWER POLE
- ⊙ - SANITARY SEWER MANHOLE
- ⊕ - FIRE HYDRANT
- - DEADMAN
- - FENCE, TYPE AND SIZE
- G - GAS LINE
- W - WATER LINE

B.M. - CITY OF WICHITA BENCHMARK DISC, 53' WEST AND 43' SOUTH OF WEST ST. AND HARRY. ELEV. - 111.768

T.B.M. - 60d NAIL IN POWER POLE S.E. OF THE S.E. COR. OF LOT 11, WEST WAREHOUSE ADD. ELEV. - 111.01



Rev A B/C/D/E/F/G/H/I/J/K/L/M/N/O/P/Q/R/S/T/U/V/W/X/Y/Z

WICHITA, KANSAS
SANITARY SEWER EXTENSIONS

PLAN AND PROFILE
PROJECT No. 468-76-245-80001-000-000-132
PLASTIC FABRICATION CO.

CASTLE & ASSOCIATES ENGINEERS WICHITA, KANSAS	DSG LJK	DWG FILE NO.
	DR LJK CH	8738-D-60,048
DATE	AUGUST 1987	SHEET NO 2 OF 2

KEUPP & SOBER PLATE 1, PLAN-PROFILE
48 7824 Made in U.S.A.

FILMED FROM THE BEST AVAILABLE COPY