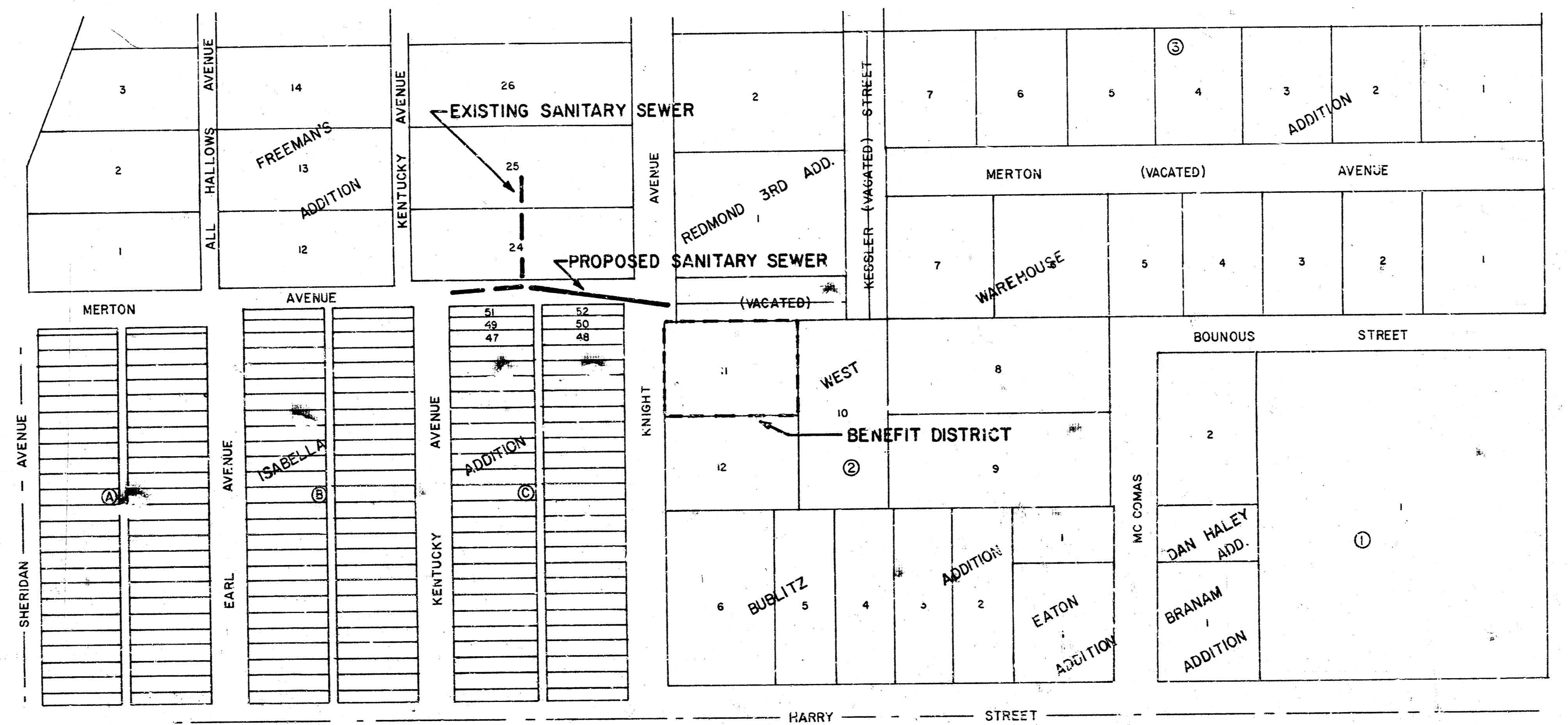


PROJECT NO. 468-76-245-80001-000-000-132

CITY OF WICHITA, KANSAS

MICHAEL E. LINDEBAK, CITY ENGINEER

AUGUST, 1987



SCALE: 1" = 150'

APPROVED AS NOTED
By CITY ENGINEER OF WICHITA
Sanitary Sewers *[Signature]*
Storm Sewers _____
Driveway Approaches _____
Water Mains _____
Paving _____

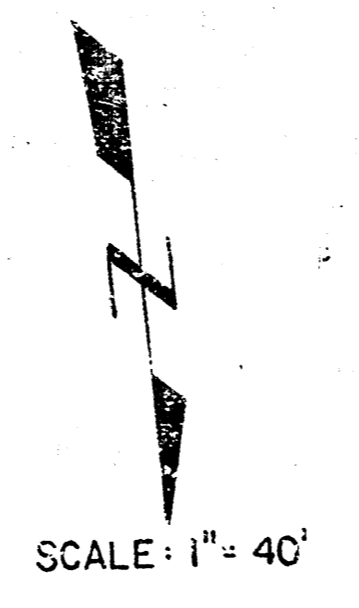
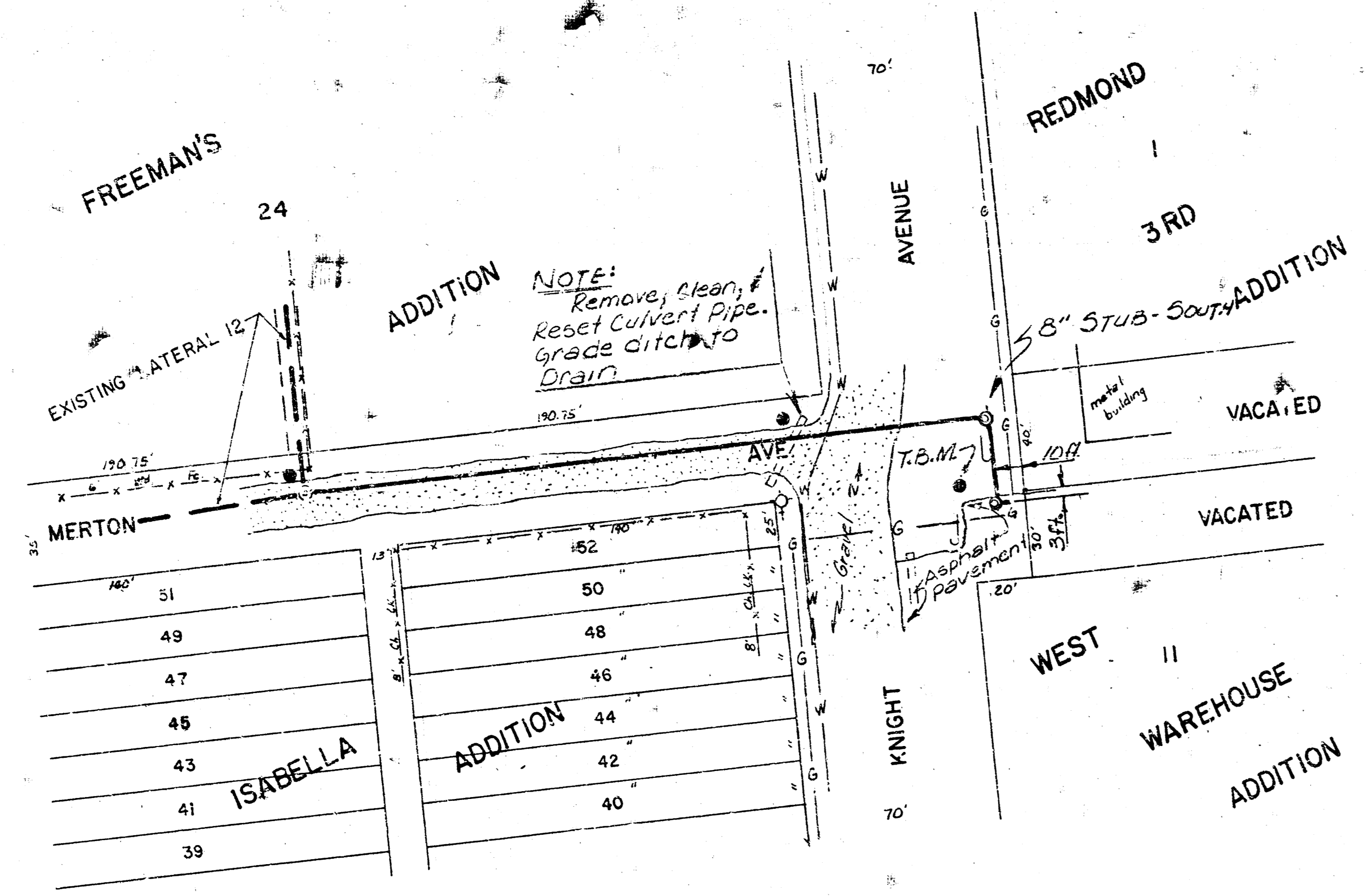
NOTE TO CONTRACTOR

This project will be constructed under the supervision of the CITY ENGINEER and conforming to the SPECIFICATIONS of the CITY OF WICHITA. The CONTRACTOR will pay the City of Wichita for all costs of plan review, inspection and opening pay contract.

NOTE:
THE CITY OF WICHITA WILL AIR TEST AND TELEVISION THE NEW LINE PRIOR TO ACCEPTANCE.

WICHITA, KANSAS	
SANITARY SEWER EXTENSIONS	
MAP AND BENEFIT DISTRICT	
PROJECT NO. 468-76-245-80001-000-132	
PLASTIC FABRICATION CO.	
CASTLE & ASSOCIATES ENGINEERS WICHITA, KANSAS	DATE August 1987
DR LIAK CH	APP
DWG FILE NO 8738-D-60,047	SHEET NO 1 OF 2

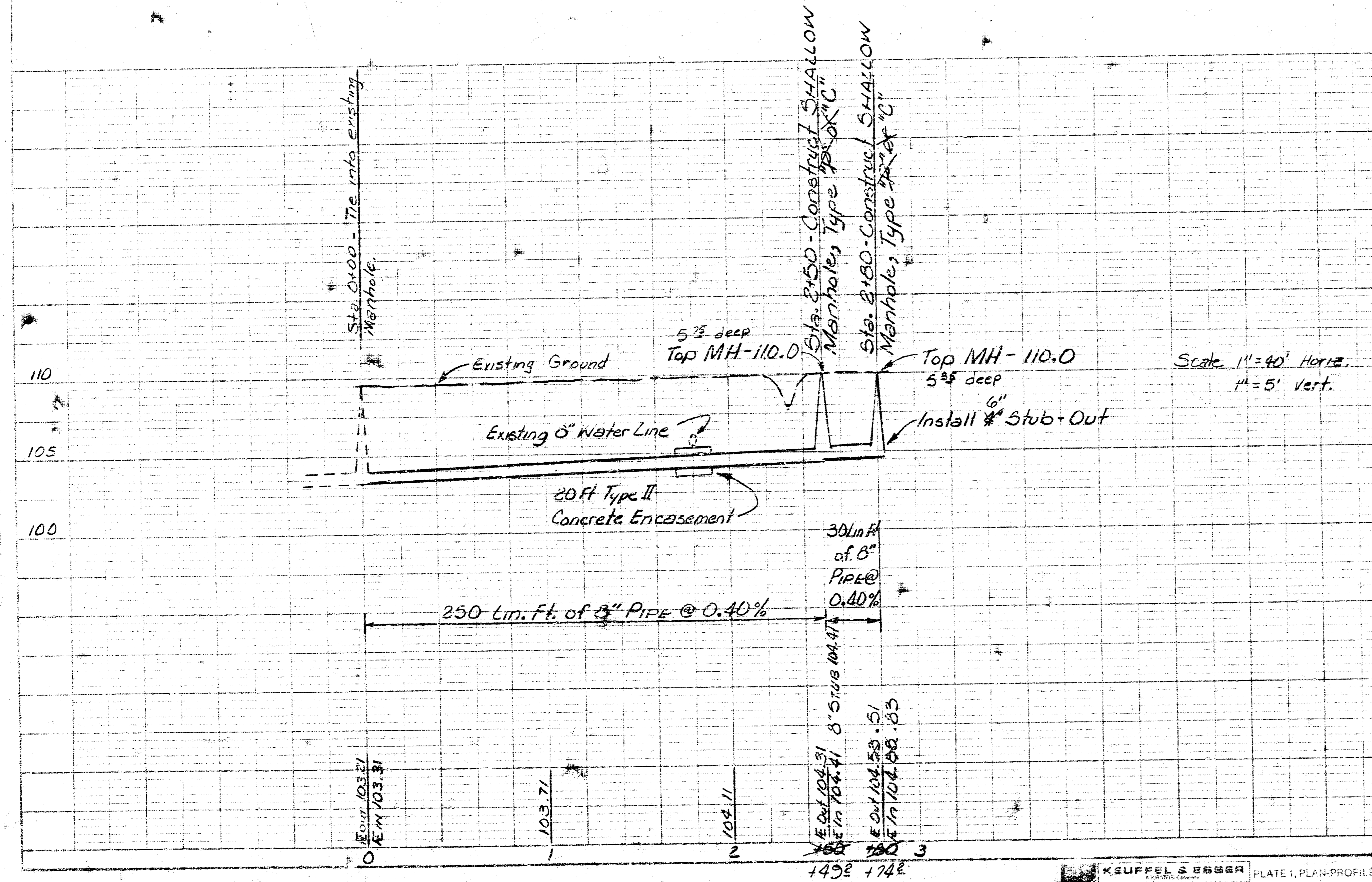
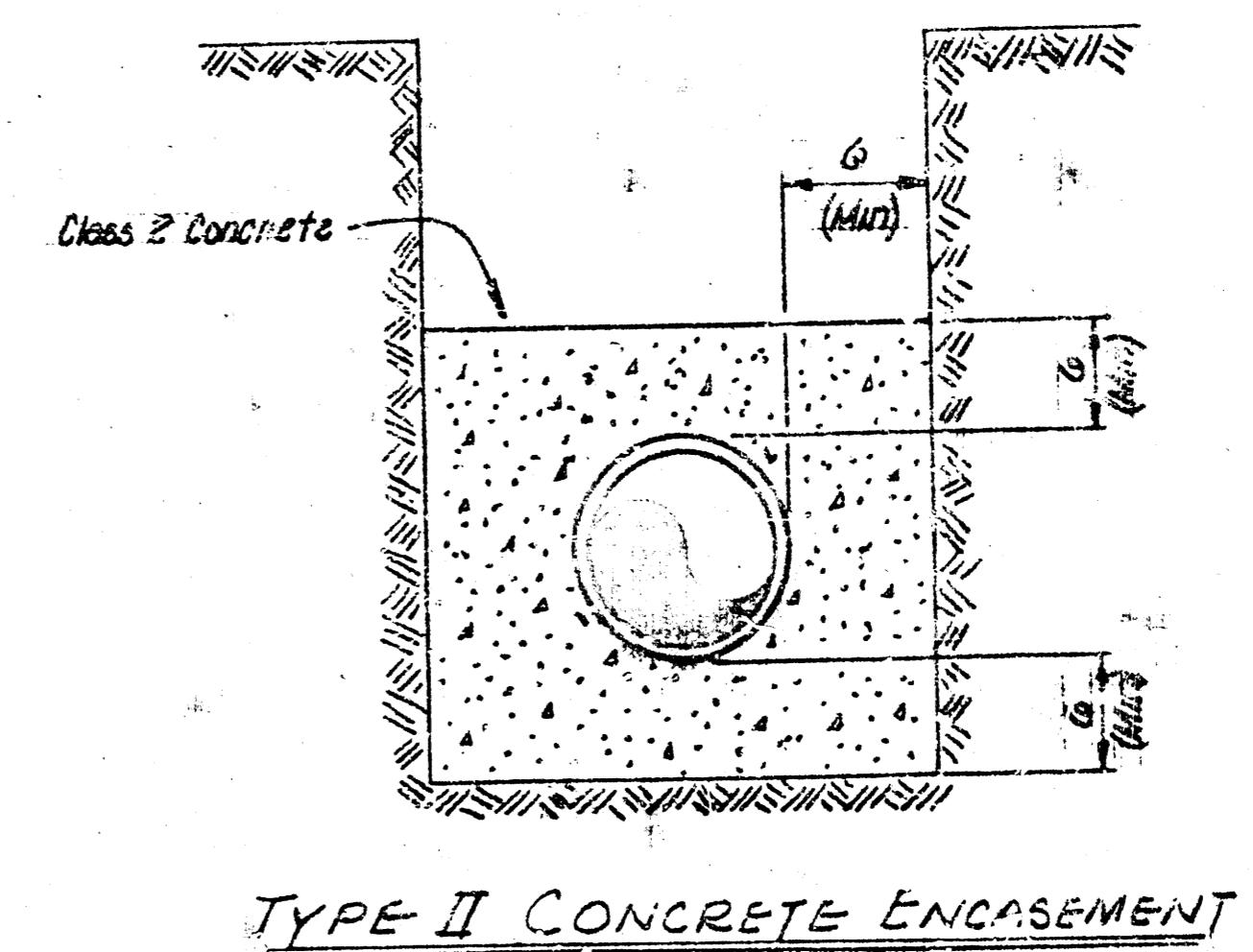
FILMED FROM THE BEST AVAILABLE COPY



- LEGEND**
- - PROPERTY IRON FOUND
 - - POWER POLE
 - ⊙ - SANITARY SEWER MANHOLE
 - ◆ - FIRE HYDRANT
 - - DEADMAN
 - - FENCE, TYPE AND SIZE
 - - GAS LINE
 - - WATER LINE

B.M. - CITY OF WICHITA BENCHMARK DISC, 53' WEST AND 43' SOUTH OF WEST ST. AND HARRY. ELEV. - 111.768

T.B.M. - 60d NAIL IN POWER POLE S.E. OF THE S.E. COR. OF LOT II, WEST WAREHOUSE ADD. ELEV. - 111.01



Rev E0 5/23/87 RMH	Record Drawing
Rev A 8/26/87 RMH	Change Alignment Per City of Wichita
WICHITA, KANSAS	
SANITARY SEWER EXTENSIONS	
PLAN AND PROFILE	
Project No. 468-76-245-50001-000-008-132	
PLASTIC FABRICATION CO.	
CASTLE & ASSOCIATES ENGINEERS WICHITA, KANSAS	DWG FILE NO 8738-D-60,048
DATE August 1987	SHEET NO 2 OF 2

KEUFFEL & ESSER ENGINEERS
487224 Made in U.S.A.

FILMED FROM THE BEST AVAILABLE COPY.....