

LEGEND

- Fire Hydrant
- Waterline
- Water Service
- Sanitary Sewer & Manhole
- Sanitary Sewer Service

4" SANITARY SEWER STUBS		
MH#	FOR SERVICE LINE TO	R-IN ELEV. OF STUB
MH1	BLDG 18-C	172.8
MH1	BLDG 19-C	171.2
MH4	BLDG 1-B	180.0
MH4	BLDG 2-B	180.6
MH4	CLUBHOUSE	177.2
MH5	BLDG 13-B	173.5
MH5	BLDG 14-B	175.5
MH5	BLDG 12-B	174.5
MH1	BLDG 20-C	172.8

City of Wichita Water Dept
Proj No. 587-80-925-80275-000-000-001

City of Wichita Sanitary Sewer
Proj. No. DBKN 70703G

SCALE: 1"=50'

NOTE: Construction of on-site waterlines shall be placed at the south right-of-way line of Beadell if the 8" Waterline paralleling Beadell is unconstructed. In this event, construction of the connecting segments across Beadell will be executed under private contract after completion of the Beadell main.

8" Waterline To Be Const. by Others
City of Wichita Water Dept
Project No. 587-80-925-80274-000-000-001

10,179.96N 8,85.77E
Connect to 8" Valve

10,392.41N 9,109.49E
Connect to 8" Valve

10,713.92N 9,681.33E
Water Dept to be reimbursed for Cost of Flushing & Installing
1-8" x 8" Tapping Sleeve
1-8" x 8" Tapping Valve
1-8" x 8" Valve Box

Bore & Install 18" x 40" Casing Pipe
See Sh. No. GA

10,583.93N 9,681.33E
1-8" x 6" Hyd Valve Anchor Tee
1-6" MJ Gate Valve
1-6" Valve Box
12" x 6" AC Pipe
Fire Hydrant

10,440.16N 9,429.24E
Const. Type A or C Std Manhole (No. 5)

130'-8" AC Pipe

17'-8" x 8" AC Pipe

10,566.23N 9,681.93E
1-8" x 8" CIMJ Tee

244.7'-8" AC Pipe

212.0'-8" AC Pipe

10,424.93N 9,683.34E
Const. Type A or C Std Manhole (No. 3)

10,566.93N 9,526.00E
1-8" x 6" Hyd Valve Anchor Tee
1-8" CIMJ Plug
1-6" MJ Gate Valve
1-6" Valve Box
4'-6" CIGL Pipe
Fire Hydrant

10,354.00N 9,681.33E
1-8" x 22 1/2" CIMJ Bend

10,424.93N 9,803.34E
Const. Type A or C Std Manhole (No. 4)

Sanitary Sewer Line B-1

174.4'-8" AC Pipe

10,091.00N 9,826.00E
1-8" x 6" Hyd Valve Anchor Tee
1-8" CIMJ Plug
1-6" MJ Gate Valve
1-6" Valve Box
2'-6" CIGL Pipe
Fire Hydrant

10,312.66N 9,169.29E
1-8" x 6" Hyd Valve Anchor Tee
1-6" MJ Gate Valve
1-6" Valve Box
2'-6" CIGL Pipe
Fire Hydrant

10,134.69N 9,321.95E
1-8" CIMJ 90° Bend, AB

10,188.62N 9,626.00E
1-8" x 22 1/2" CIMJ Bend

10,052.08N 9,076.69E
Const. Type A or C Std Manhole (No. 1)

10,245.16N 9,569.15E
Const. Type A or C Std Manhole (No. 2)

97.6'-8" AC Pipe

300'-8" AC Pipe

10,117.46N 8,903.29E
1-8" x 6" Hyd Valve Anchor Tee
1-6" MJ Gate Valve
1-6" Valve Box
11'-6" AC Pipe
Fire Hydrant

10,123.87N 9,308.83E
1-8" x 6" Hyd Valve Anchor Tee
1-6" MJ Gate Valve
1-6" Valve Box
4'-6" CIGL Pipe
Fire Hydrant

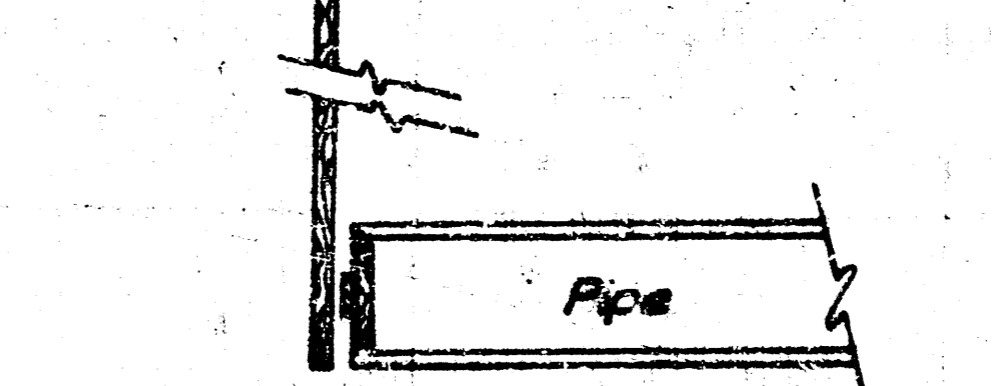
10,091.00N 9,626.00E
1-8" x 8" CIMJ Tee
1-8" x 6" CIMJ Reducer
8" Sp. x 6" B
4'-6" CIGL Pipe

8" Sanitary Sewer & Manhole To be Const. by Others
City of Wichita Sanitary Sewer
Proj. No. DBKL 574040

10,084.00N 9,626.00E
1-8" x 6" Hyd Valve Anchor Tee
1-6" CIMJ Plug
1-6" MJ Gate Valve
1-6" Valve Box
14'-6" AC Pipe
Fire Hydrant

3" Dia. Galv Pipe (Painted Fluorescent Orange)

2" x 2" Redwood Stake



PIPE STAKING DETAIL

9,922.24N 9,064.22E
1-8" x 8" CIMJ Tee

9,889.80N 9,024.87E
1-8" x 6" Hyd Valve Anchor Tee
1-8" CIMJ Plug
1-6" MJ Gate Valve

8" Sanitary Sewer & Manholes To be Const. by Others
City of Wichita Sanitary Sewer
Proj. No. DBKL 574040

See Sh. No. 3 for Site Layout.
See Sh. No. 4 for Site Grading & Drainage.
See Sh. No. GA for Utilities Profiles.
See Sh. No. 4 for General Note.

SANITARY SEWER EXTENSIONS
 BLOCK 5, QUAIL MEADOWS SECOND ADDITION
 CITY OF WICHITA PROJ. NO. DBKN 70703G

APPROVED FOR THE CITY OF WICHITA
 By: [Signature]
 Date: 11-29-79

FOX RUN
WICHITA, KANSAS

UTILITY PLAN

