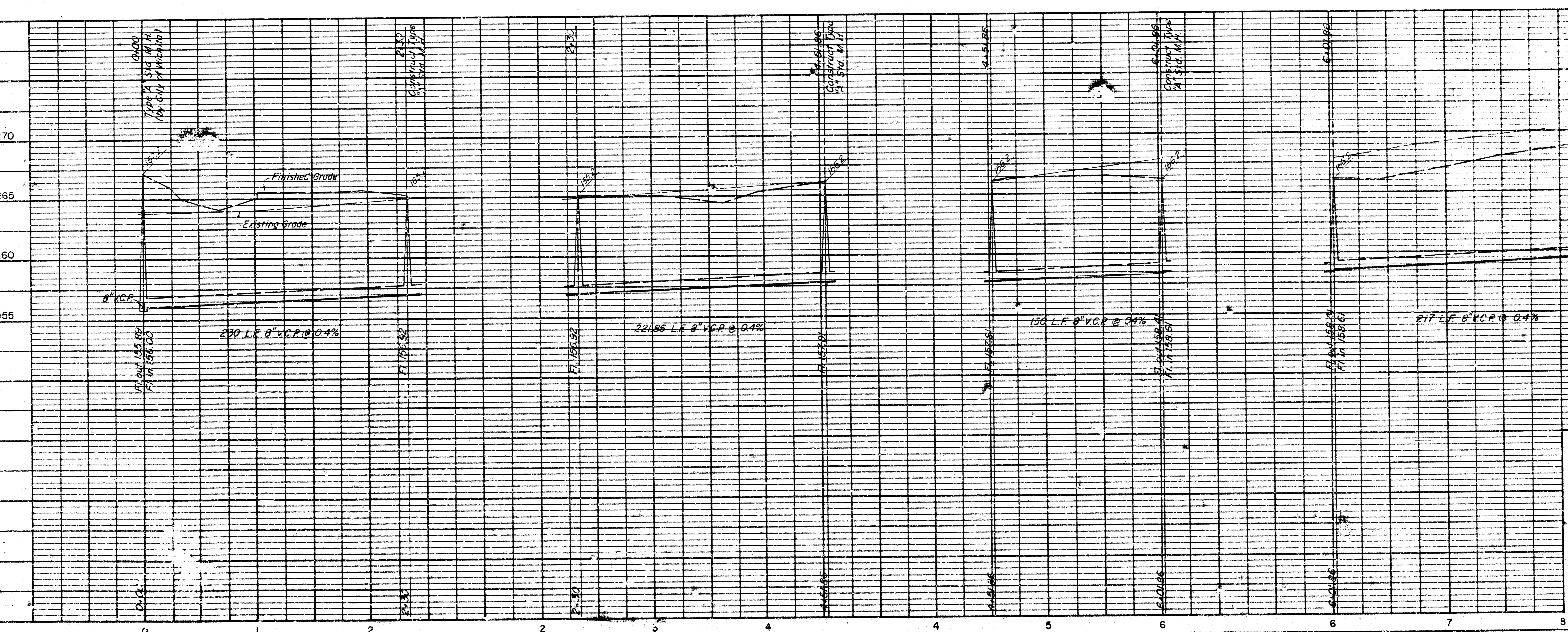


SCALE
 1" = 50' Horiz.
 1" = 5' Vert.

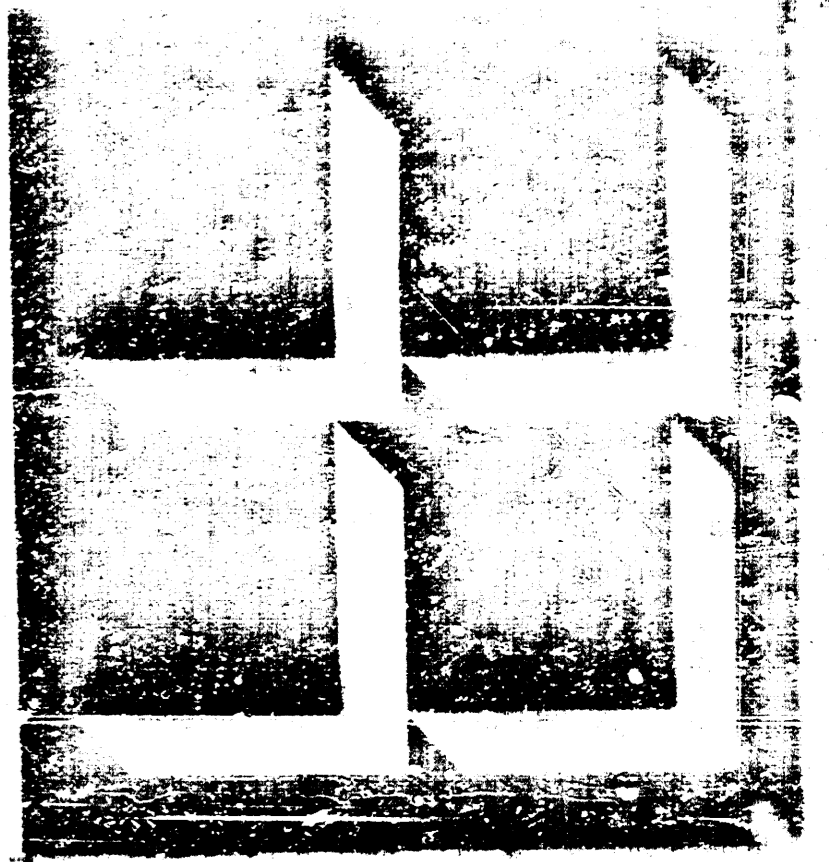
NOTE:
 All lines to be sand backfilled and flushed.



SANITARY SEWER EXTENSION
 MAIN 19, W. I. S.
 CITY PROJECT #DBKW 705068
 QUAIL MEADOWS 2ND ADDITION
 Lot 1, Blk. 6
 MOEHRING & ASSOCIATES
 CONSULTING ENGINEERS

NOTES:

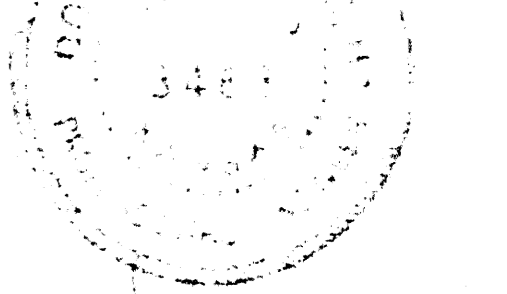
1. Provide 4" Clean-outs in building service lines at max. 100' centers where distance from building to sewer lateral exceeds 100'.



COSSAN LIVINGSTON ASSOCIATES, P.A.

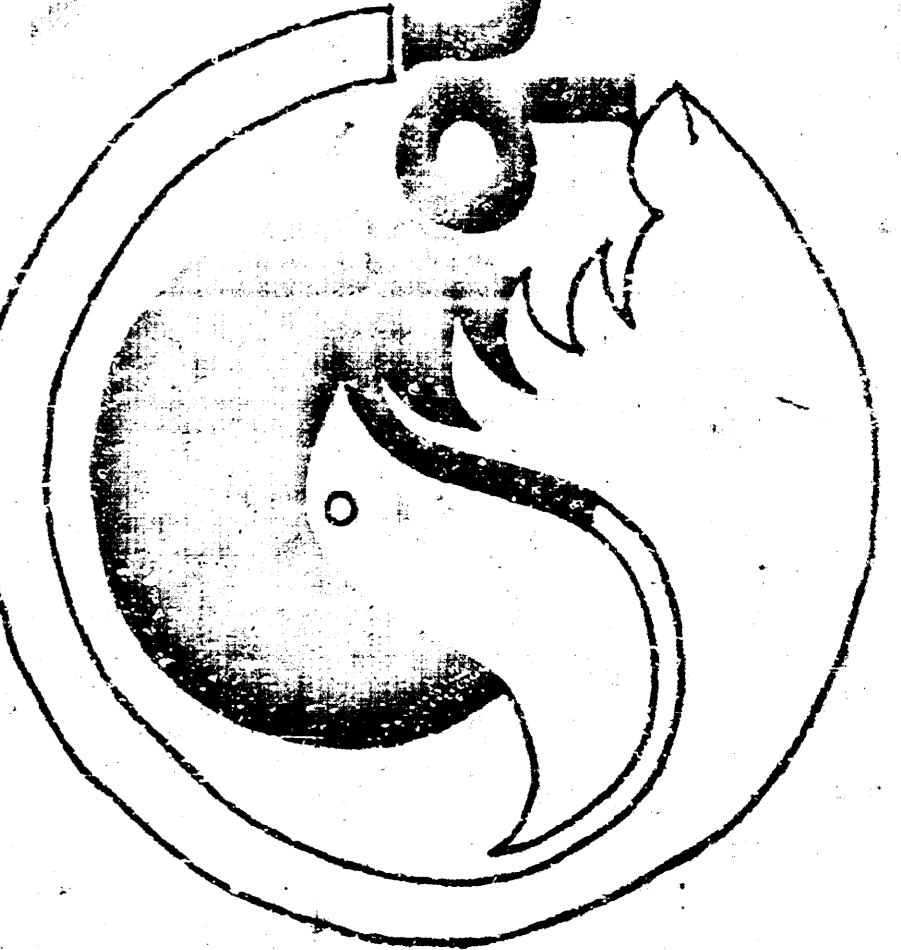
238 PATTE, WICHITA, KANSAS 67211
ARCHITECTS AND ENGINEERS

MOEHRING & ASSOCIATES
Consulting Engineers



quail meadows

REVISED 1-12-76
REVISED 2-10-76

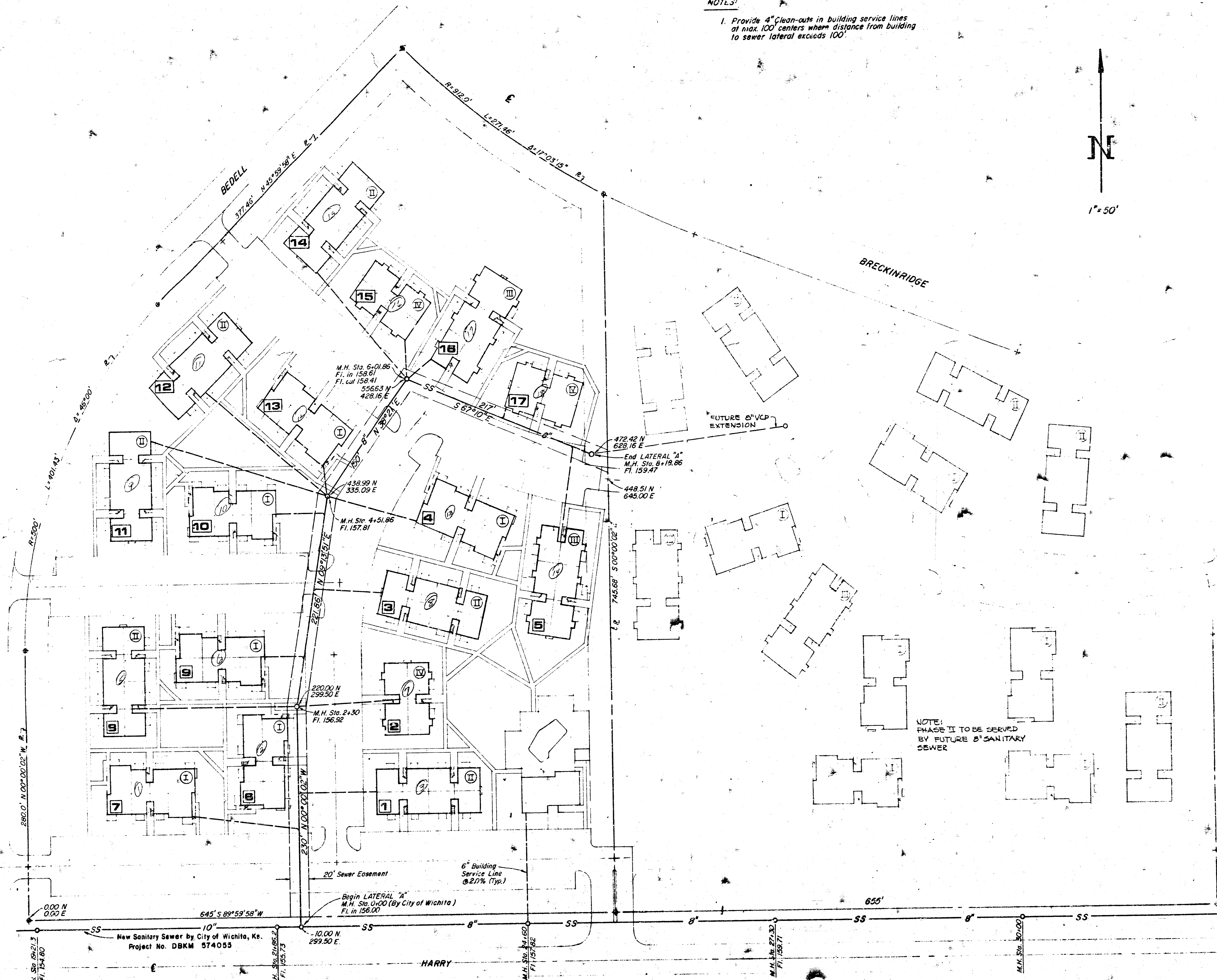


PHASE I
QUAIL MEADOWS, APPS.
FOR
THE HARDESTY COMPANY
SITE UTILITY PLAN

JOB NO. 140

DATE 11-24-75

DRAWN MOEHRING



NOTE:
PHASE II TO BE SERVED
BY FUTURE 8" SANITARY
SEWER

New Sanitary Sewer by City of Wichita, Ke.
Project No. DBKM 574055

HARRY