

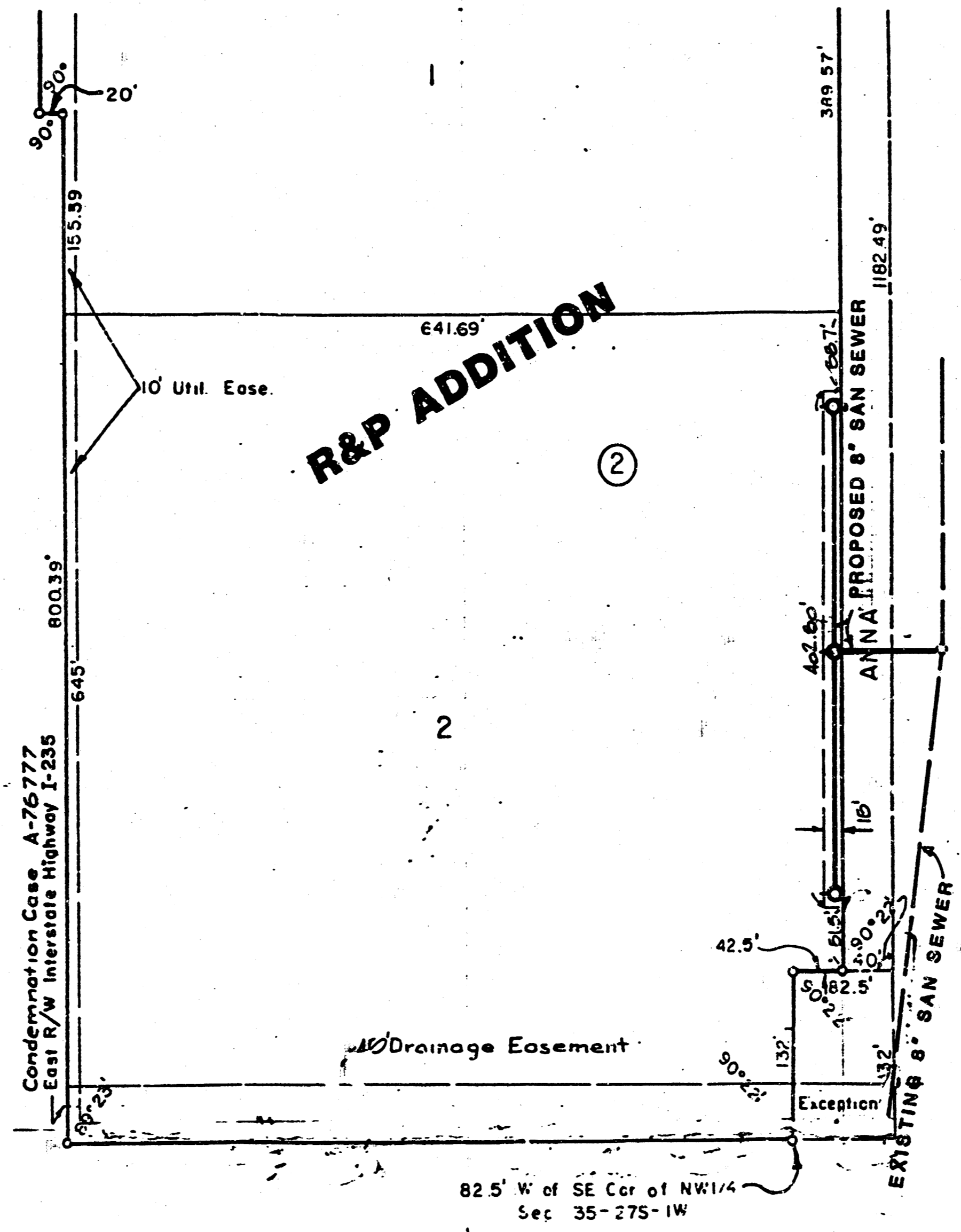
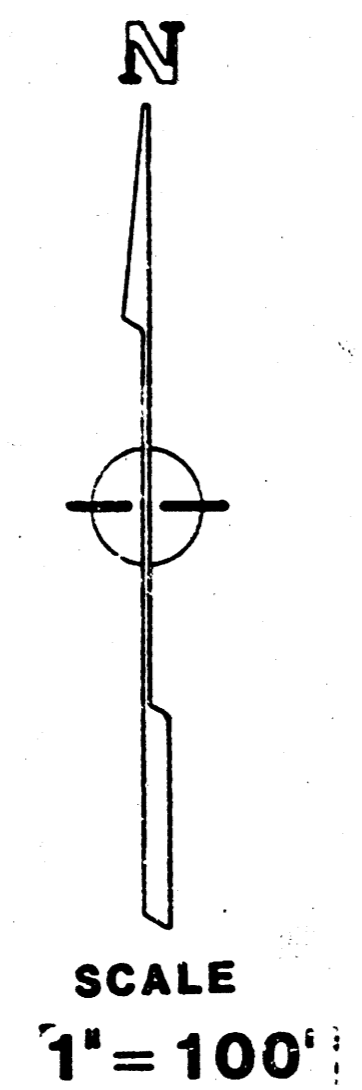
PRIVATE SANITARY SEWER EXTENSION
TO SERVE
LOT 2 BLK. 2 R&P ADDITION

PROJECT NO.
468-76-245-80001-000-000-058

APPROVED AS NOTED
 By CITY ENGINEER OF WICHITA
 Sanitary Sewers ADG 4/9/86
 Storm Sewers _____
 Driveway Approaches _____
 Water Mains _____
 Paving _____

NOTE TO CONTRACTOR
 This project will be constructed under the supervision of the CITY ENGINEER and conforming to the SPECIFICATIONS of the CITY OF WICHITA. The CONTRACTOR will pay the City of Wichita for all costs of plan review, inspection and booking per contract.

*BOOKED
 J-238*



CITY OF WICHITA, KANSAS
MIKE E. LINDEBAK CITY ENGINEER

- GENERAL NOTES**
1. Contractor to contact Kansas One-Call (1-800-344-7233) prior to any excavation.
 2. All block corners and control points will be protected. If removed during construction, Contractor will have them replaced by a licensed engineer or land surveyor at his expense.
 3. Contractor to provide proper signing and traffic access on Anna street during sewer construction in that area.

NOTE: CONTRACTOR TO NOTIFY ARKLA GAS COMPANY (942-8350) PRIOR TO ANY SERVICE LINE CONNECTIONS TO THE SANITARY SEWER. MANY BURIED SERVICE LINES EXIST IN THIS AREA, AND SHALL BE LOCATED BEFORE SANITARY SEWER CONNECTIONS ARE CONSTRUCTED.



APRIL 1986

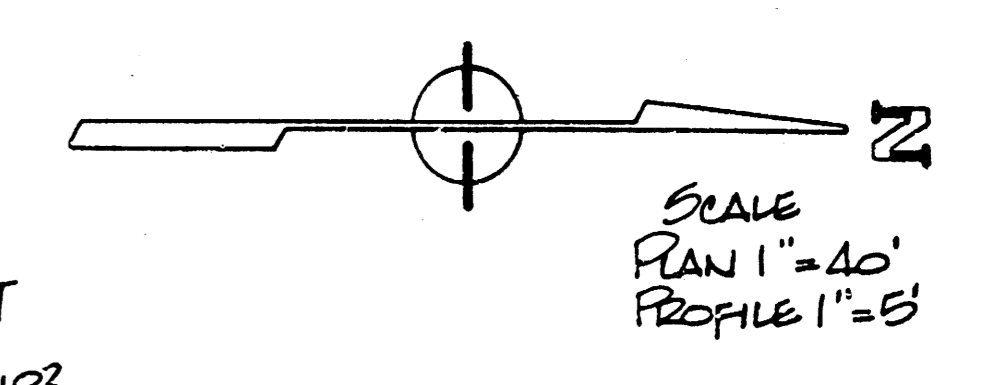
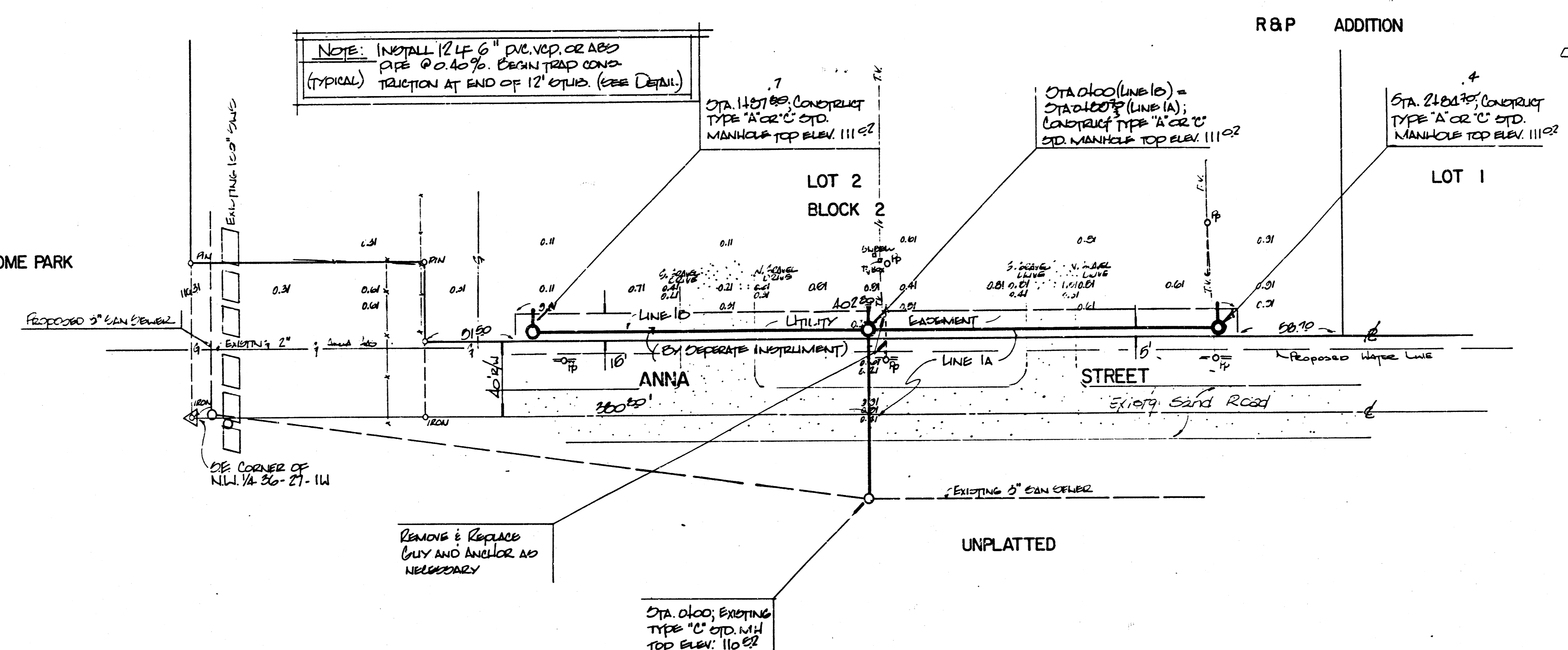
BAUGHMAN COMPANY, P.A.
 SURVEYING & ENGINEERING
 316282-7271 • 330 LAURA • WICHITA, KANSAS 67211

FILMED FROM THE BEST AVAILABLE COPY

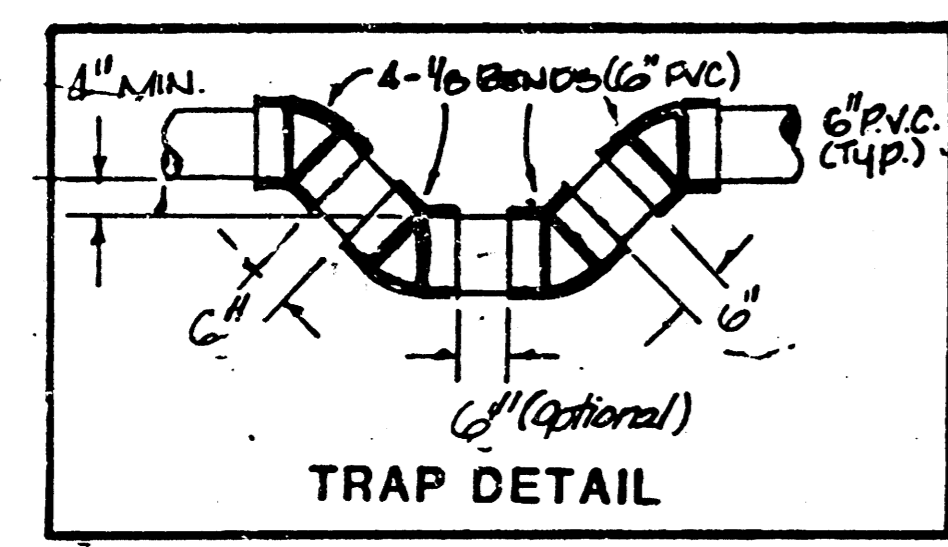
BENCHMARK: CITY OF WICHITA DEC, WEST SIDE ANNA AND 21ST DRIVE INTO TRAILER PARK 2261 SO ANNA; 100' ± SOUTH OF 1/4 SECTION CORNER ELEVATION=110.60 CITY DATUM

BENCHMARK: NORTH BM MANHOLE 11.7' NORTH OF SE CORNER OF NW 1/4 360-27-11W ELEVATION=100.60

NOTE: INSTALL 12 LF 6" PVC, VCP, OR ABS PIPE @ 0.40% GRADE. BEGIN TRAP CONSTRUCTION AT END OF 12' UTILITY. (SEE DETAIL)



PLAN NOTE BOOK No. _____

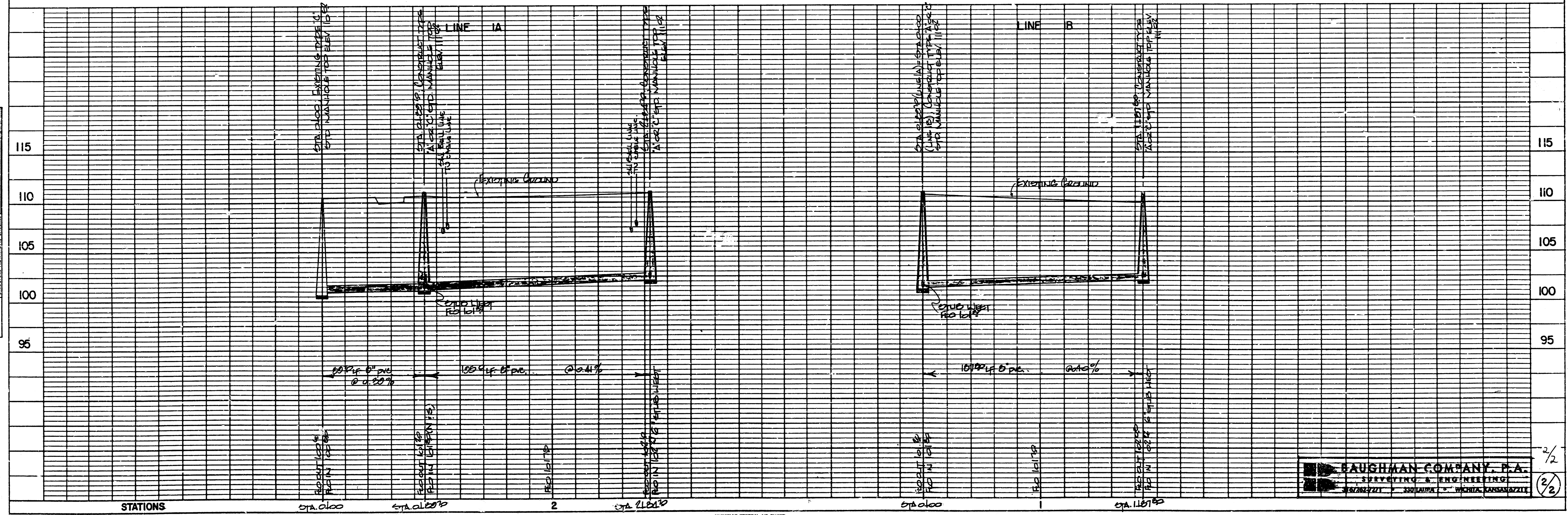


REMOVE & REPLACE GUY AND ANCHOR AS NECESSARY

STA. 0100, EXISTING TYPE 'C' STD. MH TOP ELEV. 110.82

AS BUILT 6-9-84

PROFILE NOTE BOOK No. _____



BAUGHMAN COMPANY, P.A.
SURVEYING & ENGINEERING
12702 E. 21ST ST. WICHITA, KANSAS 67221

PLATE 1-SINGLE PLAN AND PROFILE-FULL LINE
PRINTED IN U.S.A.

FILMED FROM THE BEST AVAILABLE COPY....