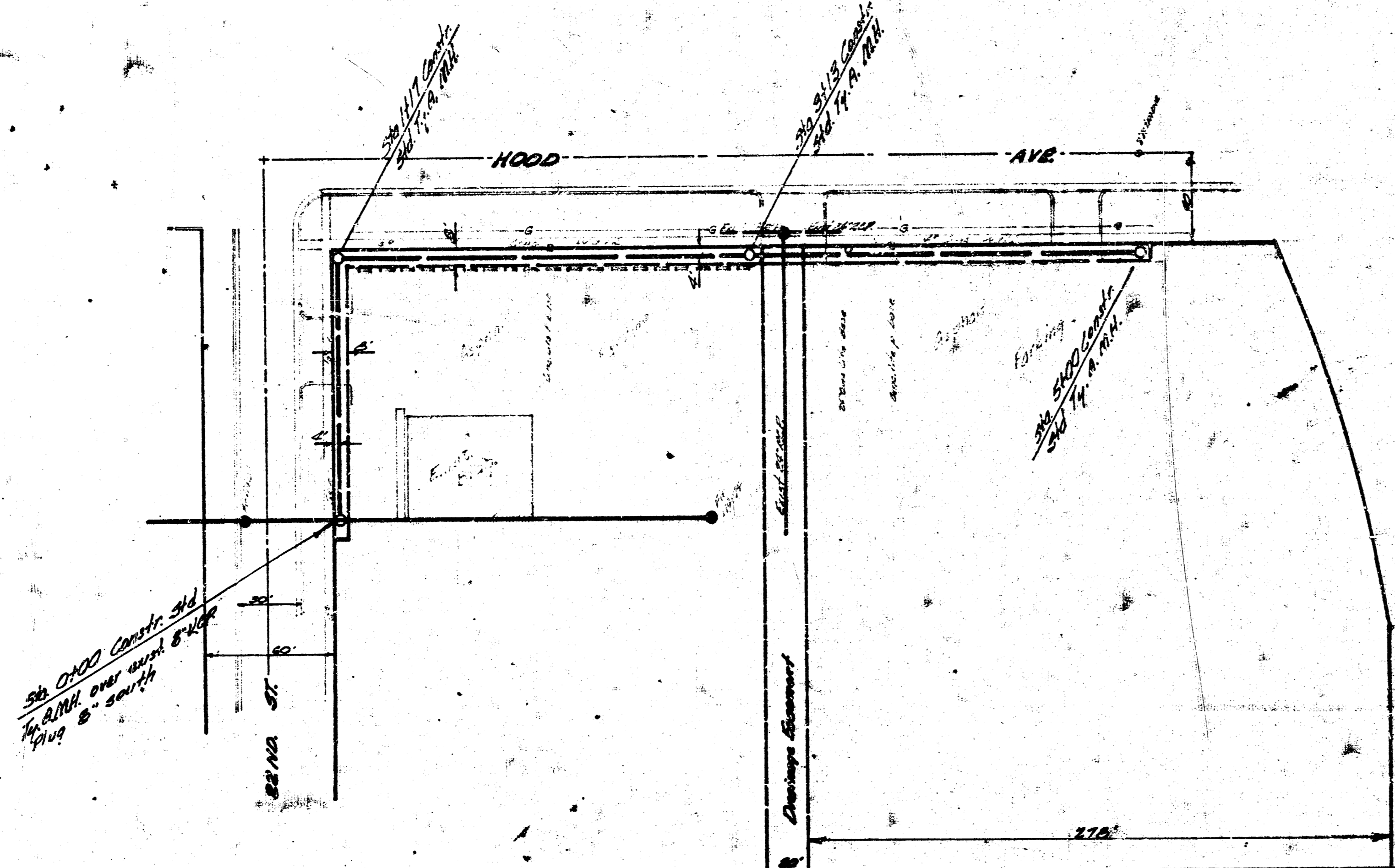


B.M. 122.86 "a" Chisled on S.W. Cor. Conc. Flgng. N.E. Cor. 21st St. & Hood.

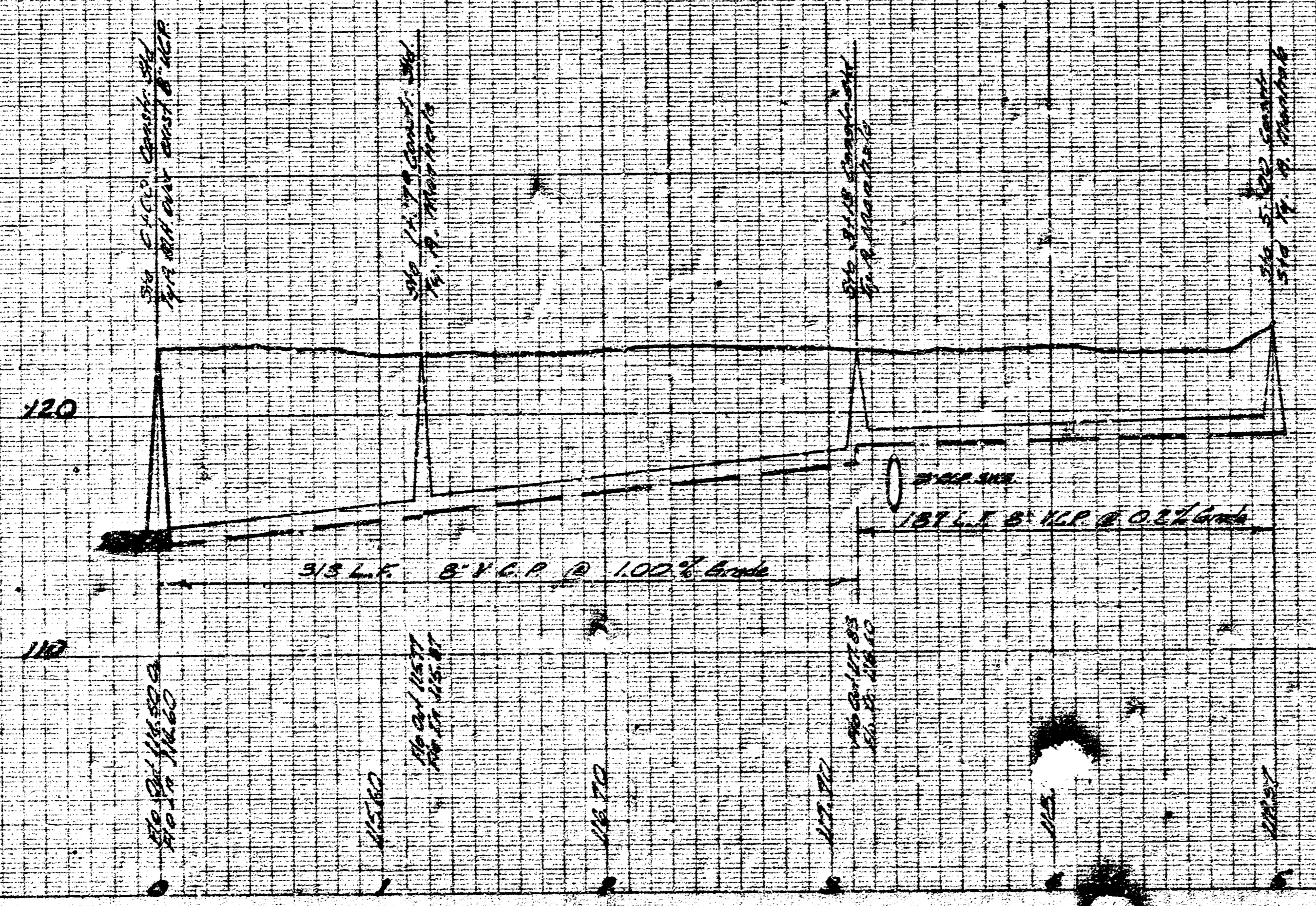
12/15/68
 12/15/68
 12/15/68



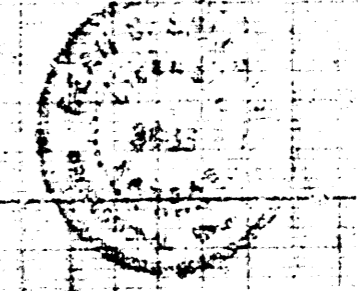
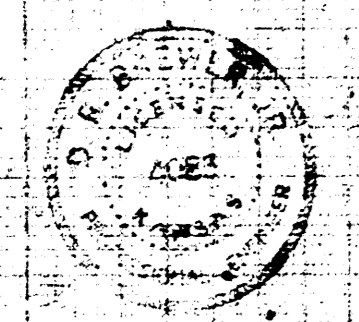
NOTE TO CONTRACTOR:
 Contractor will excavate existing sanitary sewer @ Sta 0+00 so that Field Engr. may verify elev. prior to construction. Field Engr. to note condition of exist. Walk & Drives. Contractor to replace any Walk or Drives damaged during construction of sanitary sewer.

NOTE TO CONTRACTOR:
 This project will be constructed under the supervision of the CITY ENGINEER and conforming to the SPECIFICATIONS of the CITY OF WICHITA. The CONTRACTOR will reimburse the City of Wichita for all cost of Engineering, Plans and Inspection.

PLAN SCALE 1" = 40'
 PROFILE SCALE 1" = 40'
 PROFILE SCALE 1" = 4' V.



SANITARY SEWER FOR
 RIVERBEND SHOPPING CENTER
 CITY OF WICHITA, KANSAS
 B. E. SMITH CITY ENGINEER
 DATE: 12/15/68 PRIVATE PROJECT



2 12 5 4