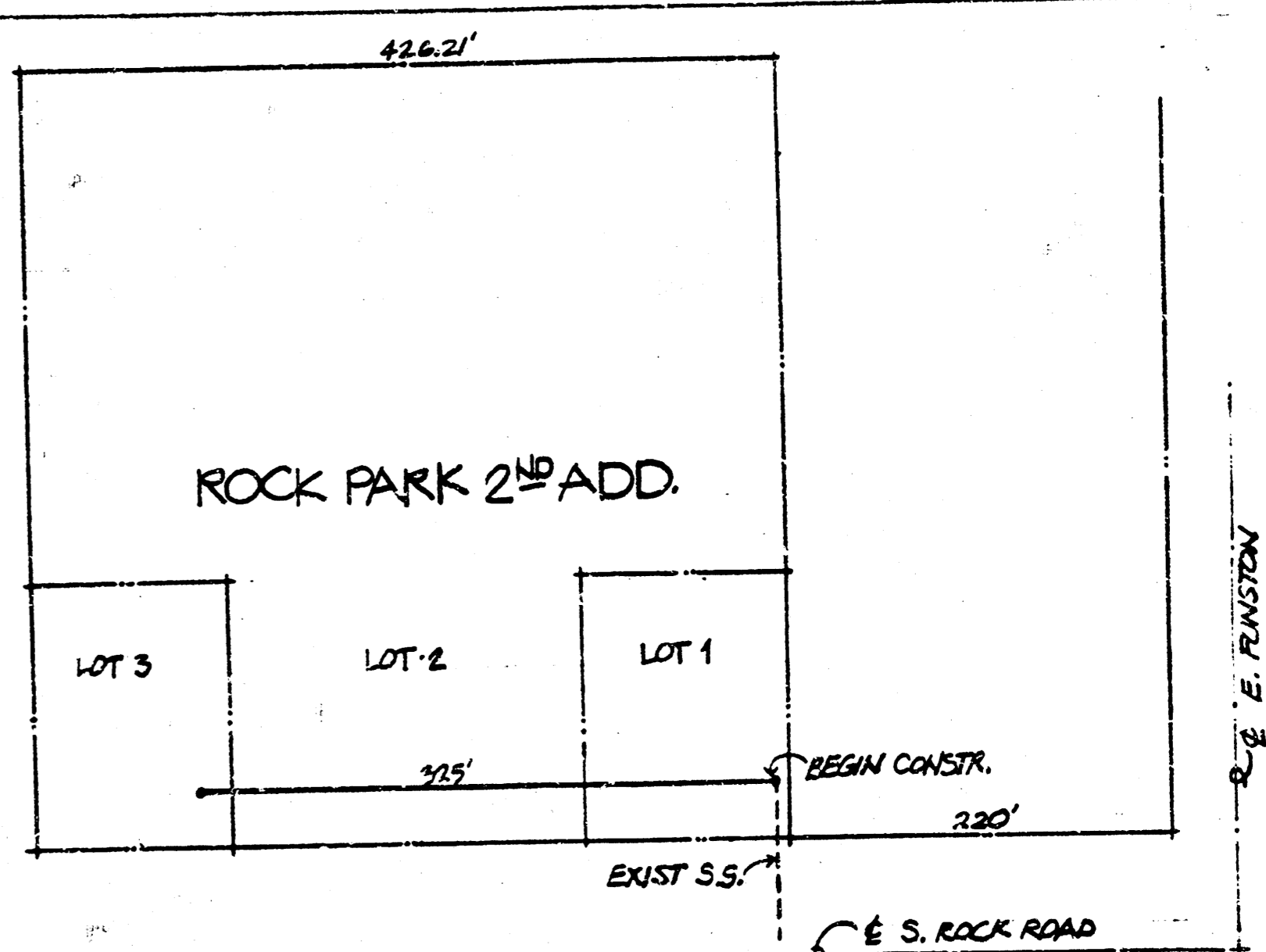
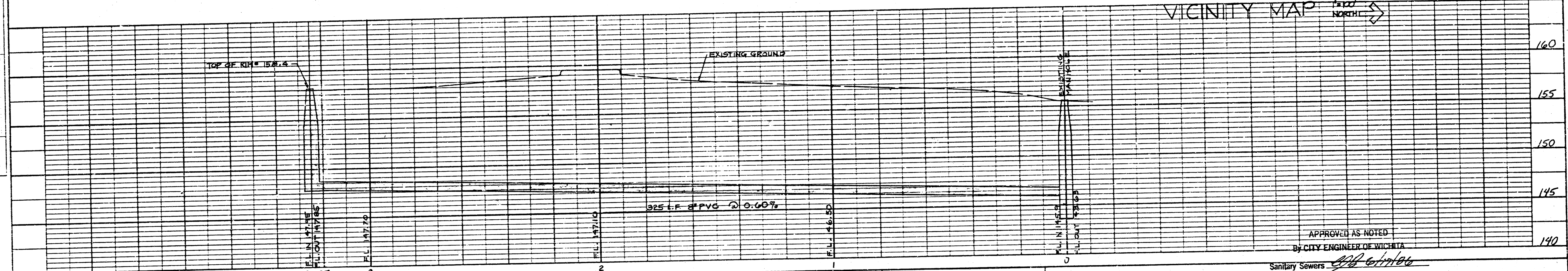


PLAN
 SHEET NO. 1
 DATE: 6/17/86

PROFILE
 SHEET NO. 2
 DATE: 6/17/86



VICINITY MAP
 NORTH



BENCHMARK:
 STANDARD DISK
 32' S. & 62' N. OF THE SE COR.
 NE 1/4, SEC. 21 - 27 - 2E
 ELEV. 163.65 CITY DATUM

STA 3+25
 CONSTRUCT STANDARD
 TYPE 'C' MANHOLE
 F.L. OUT = 147.85
 F.L. @ STUB S.W. = 148.01
 END PROJECT

NORTH
 SCALE: 1" = 20' HORIZONTAL
 1" = 5' VERTICAL

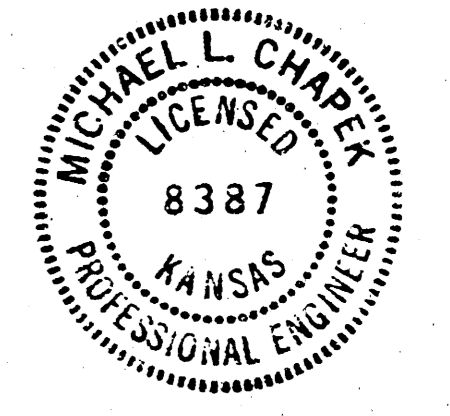
STA 0+00
 TAP INTO EXISTING MANHOLE
 F.L. IN = 145.90
 BEGIN PROJECT

THE CONTRACTOR SHALL BE RESPONSIBLE FOR PRESERVING PROPERTY IRONS. THE CONTRACTOR SHALL BE REQUIRED TO RE-ESTABLISH ANY PROPERTY IRONS WHICH ARE DAMAGED OR DESTROYED BY HIS CONSTRUCTION OPERATIONS. SUCH IRONS SHALL BE RE-ESTABLISHED BY A LICENSED LAND SURVEYOR OR A LICENSED PROFESSIONAL ENGINEER IN ACCORDANCE WITH STATE LAWS.

- APPROVED AS NOTED
 BY CITY ENGINEER OF WICHITA
- Sanitary Sewers
 - Storm Sewers
 - Driveway Approaches
 - Water Mains
 - Paving

NOTE TO CONTRACTOR
 This project will be constructed under the supervision of the CITY ENGINEER and conforming to the SPECIFICATIONS of the CITY OF WICHITA. THE CONTRACTOR will pay the City of Wichita for all costs of plan review, inspection and booking per contract.

BOOKED



CHAPEK RESEARCH & ENGINEERING
 NEWTON KANSAS 283-3548 JUNE 17, 1986

PRIVATE SANITARY SEWER EXTENSION TO SERVE ROCK PARK 2ND ADDITION PRIVATE PROJECT NO. 468-76-245-80001-000-000-070

10 8 4 4

FILMED FROM THE BEST AVAILABLE COPY