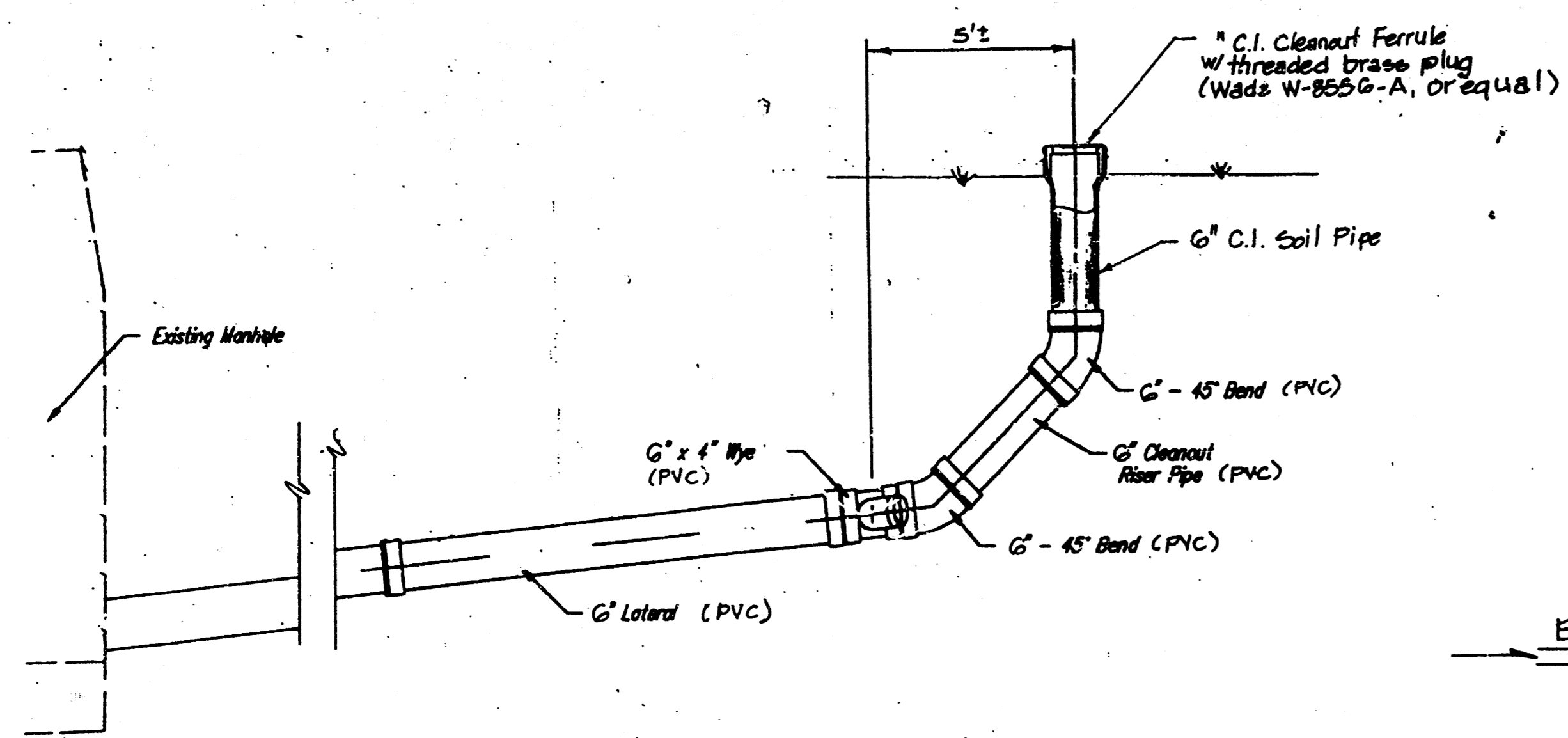
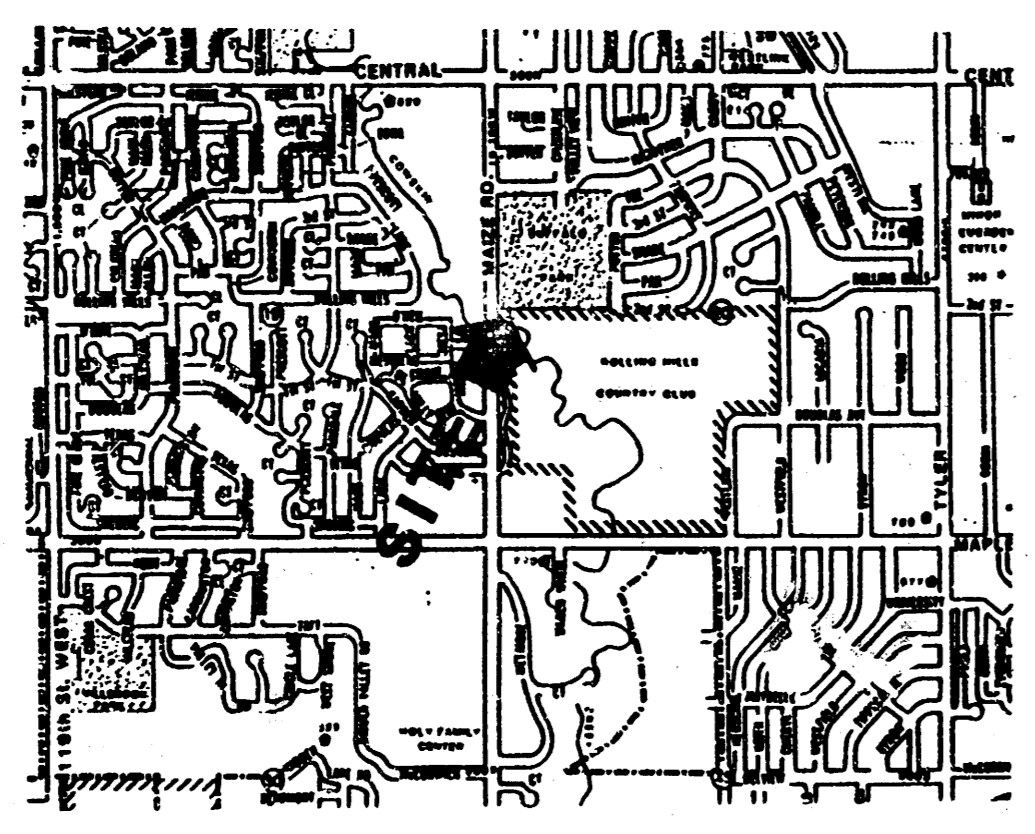


DATE	
BY	
REVISIONS	
NO. 1	
NO. 2	
NO. 3	
NO. 4	
NO. 5	
NO. 6	
NO. 7	
NO. 8	
NO. 9	
NO. 10	
NO. 11	
NO. 12	
NO. 13	
NO. 14	
NO. 15	
NO. 16	
NO. 17	
NO. 18	
NO. 19	
NO. 20	
NO. 21	
NO. 22	
NO. 23	
NO. 24	
NO. 25	
NO. 26	
NO. 27	
NO. 28	
NO. 29	
NO. 30	
NO. 31	
NO. 32	
NO. 33	
NO. 34	
NO. 35	
NO. 36	
NO. 37	
NO. 38	
NO. 39	
NO. 40	
NO. 41	
NO. 42	
NO. 43	

DATE	
BY	
REVISIONS	
NO. 1	
NO. 2	
NO. 3	
NO. 4	
NO. 5	
NO. 6	
NO. 7	
NO. 8	
NO. 9	
NO. 10	
NO. 11	
NO. 12	
NO. 13	
NO. 14	
NO. 15	
NO. 16	
NO. 17	
NO. 18	
NO. 19	
NO. 20	
NO. 21	
NO. 22	
NO. 23	
NO. 24	
NO. 25	
NO. 26	
NO. 27	
NO. 28	
NO. 29	
NO. 30	
NO. 31	
NO. 32	
NO. 33	
NO. 34	
NO. 35	
NO. 36	
NO. 37	
NO. 38	
NO. 39	
NO. 40	
NO. 41	
NO. 42	
NO. 43	

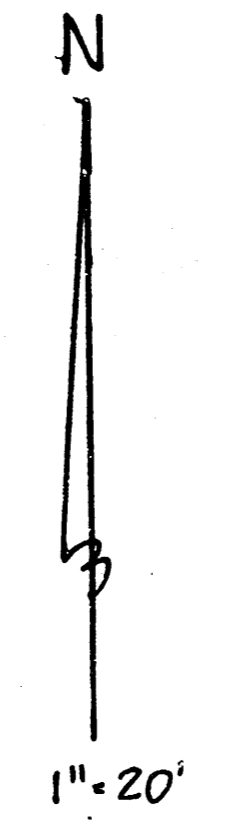
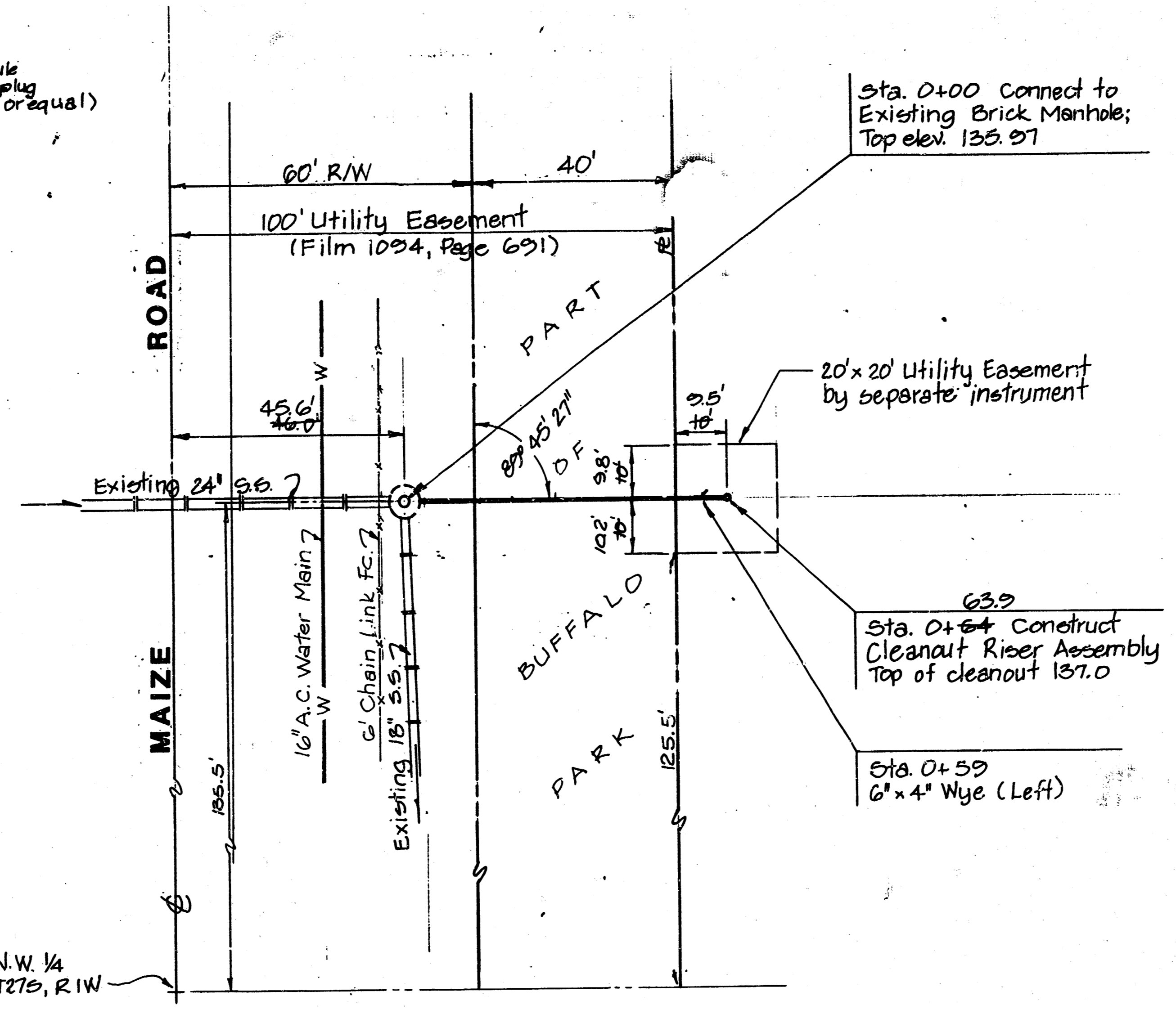


CLEANOUT RISER DETAIL



VICINITY MAP

SW cor. N.W. 1/4
Sec. 20, T27S, R1W



GENERAL NOTES

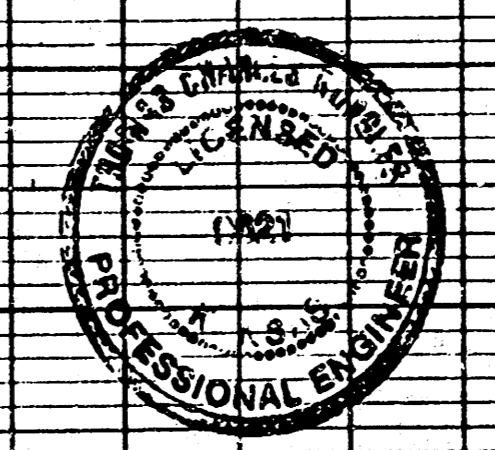
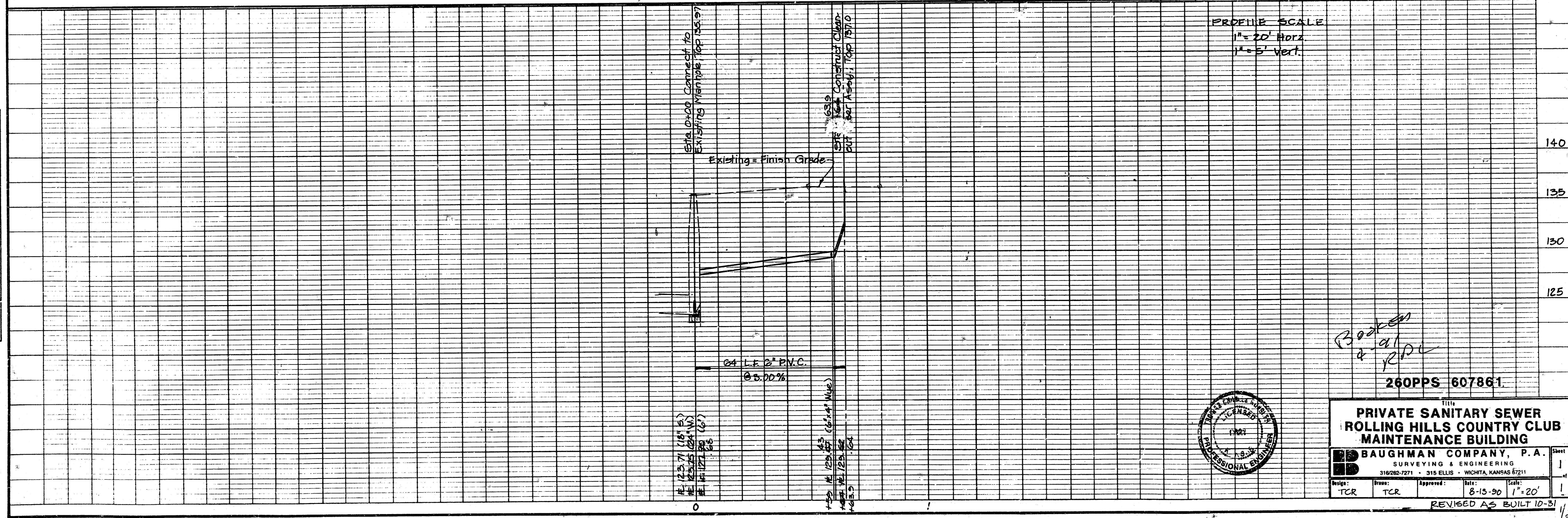
1. The Contractor shall verify underground utility locations through Kansas One-Call, prior to any excavation.
2. All work on this project shall be performed in accordance with the standard specifications for sanitary sewer construction for the City of Wichita.

APPROVED AS NOTED
 By CITY ENGINEER OF WICHITA
 Sanitary Sewers VRH 9/24/90
 Storm Sewers _____
 Driveway Approaches _____
 Water Mains _____
 Paving _____

NOTE TO CONTRACTOR

INSPECTION AND TESTING FOR THIS PROJECT IS TO BE PROVIDED BY A LICENSED CONSULTING ENGINEERING FIRM UNDER CONTRACT WITH THE OWNER/DEVELOPER. SAID INSPECTION TO BE IN ACCORDANCE WITH THE CITY OF WICHITA STANDARD CONSTRUCTION ENGINEERING PRACTICES AND CERTIFIED BY A LICENSED PROFESSIONAL ENGINEER. NO WORK SHALL BE PERFORMED IN DEDICATED EASEMENTS OR PUBLIC RIGHT-OF-WAY BY THE CONTRACTOR WITHOUT SUCH INSPECTION NOR SHALL ANY WORK BE COMMENCED WITHOUT WRITTEN AUTHORIZATION BY THE CITY ENGINEER.

PROFILE SCALE
 1" = 20' Horiz
 1" = 5' Vert.



*Booked
at
200*

260PPS 607861

PRIVATE SANITARY SEWER
 ROLLING HILLS COUNTRY CLUB
 MAINTENANCE BUILDING

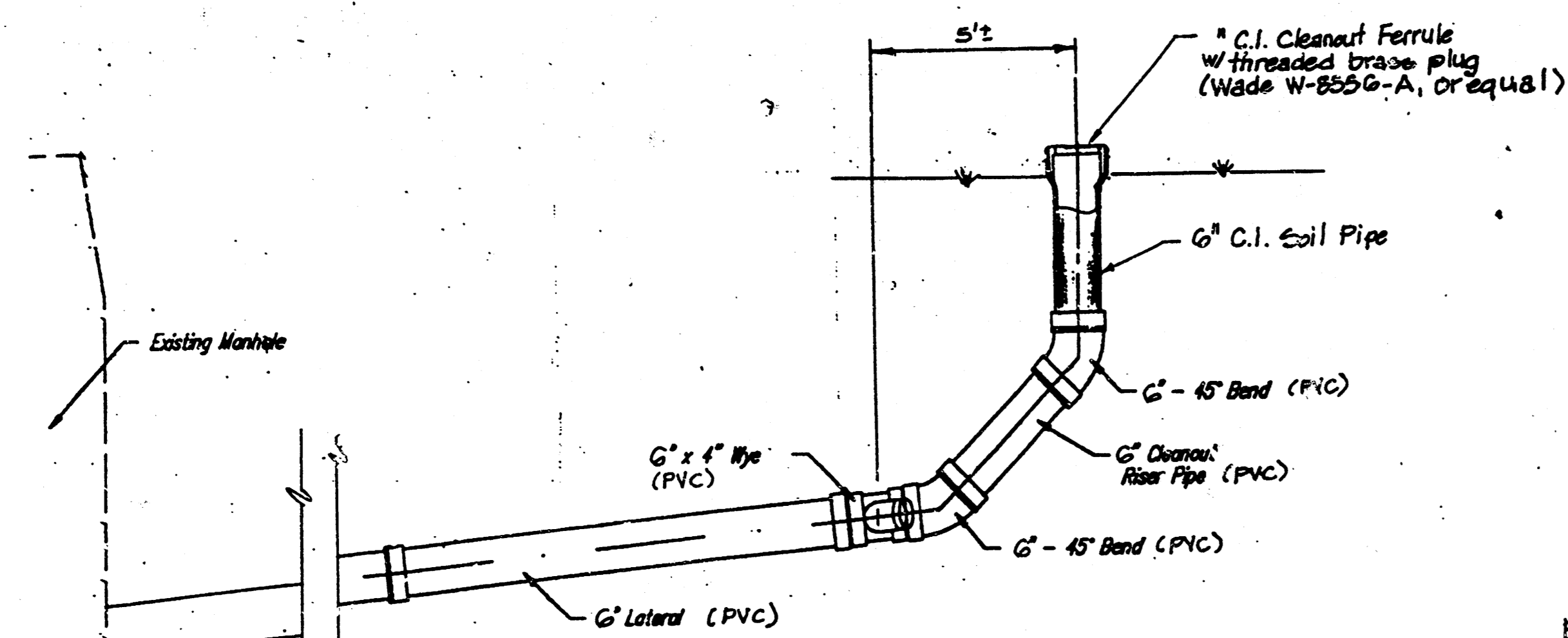
BAUGHMAN COMPANY, P.A.
 SURVEYING & ENGINEERING
 316260-7271 • 315 ELLIS • WICHITA, KANSAS 67211

Scale: TCR Date: 8-15-90 1"=20'
 Approved: TCR
 REVISED AS BUILT 10-31-92

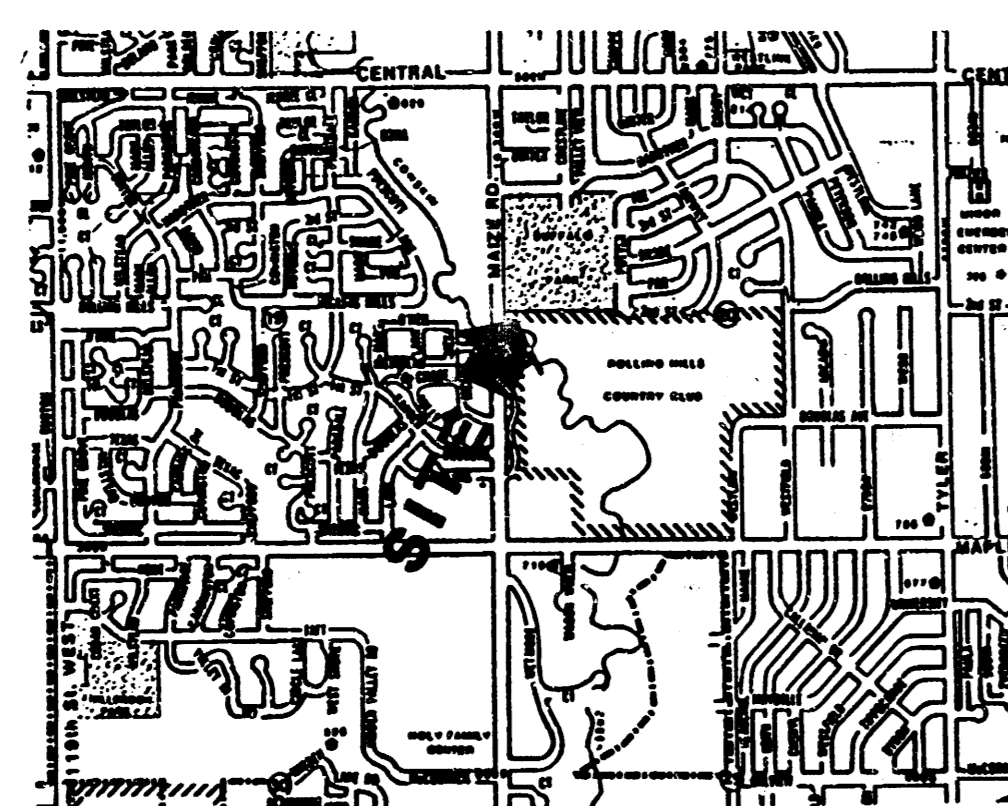
FILMED FROM THE BEST
 AVAILABLE COPY

PLAN	DATE
NOTED	
NO. FILE	

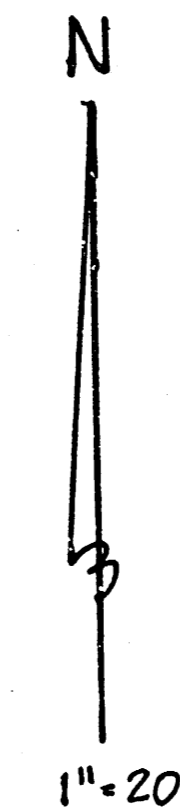
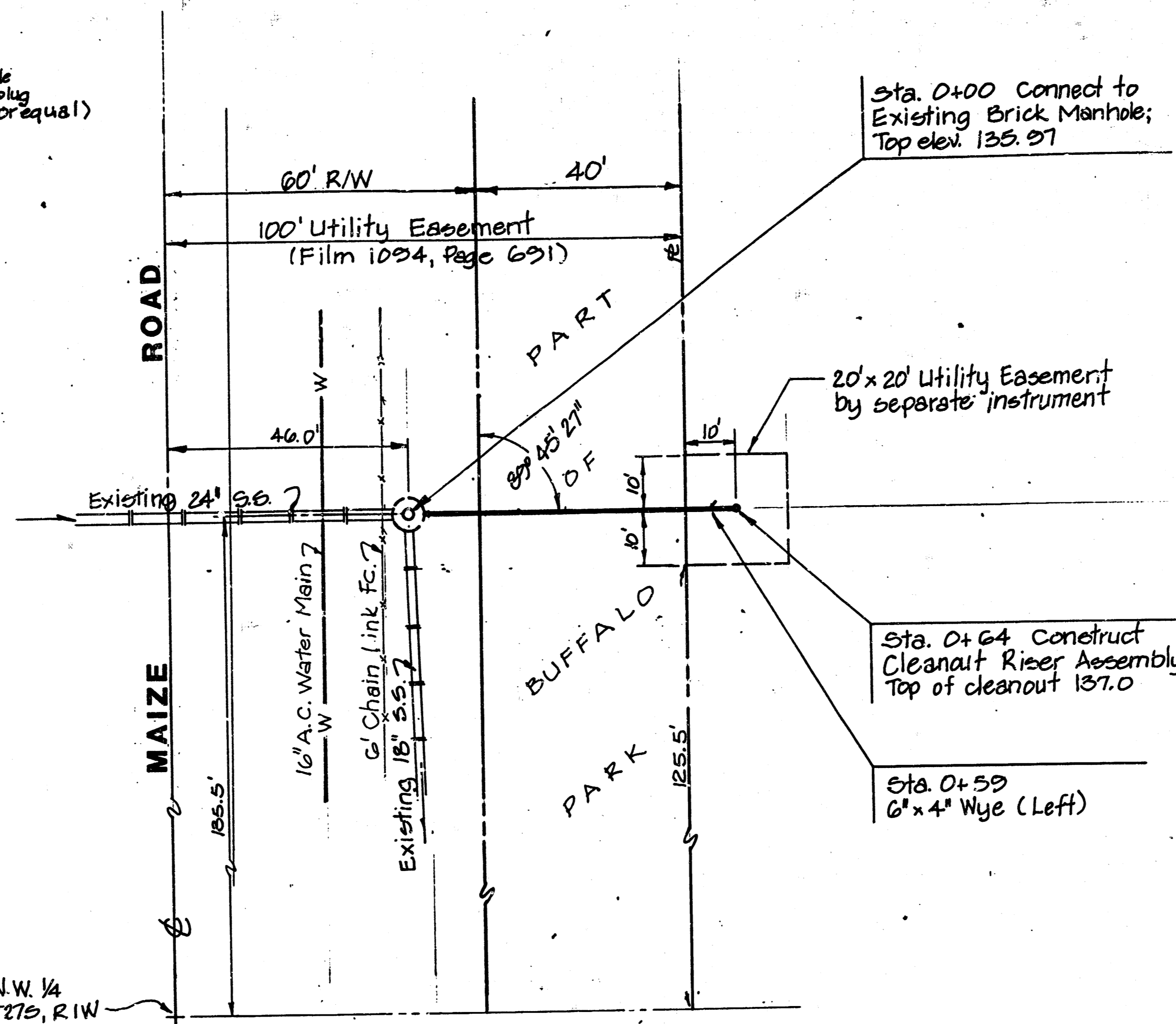
PROFILE	DATE
NOTED	
NO. FILE	



CLEANOUT RISER DETAIL



VICINITY MAP



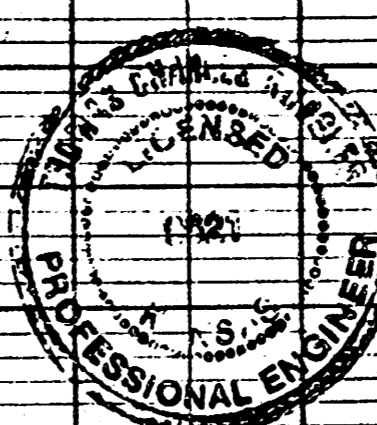
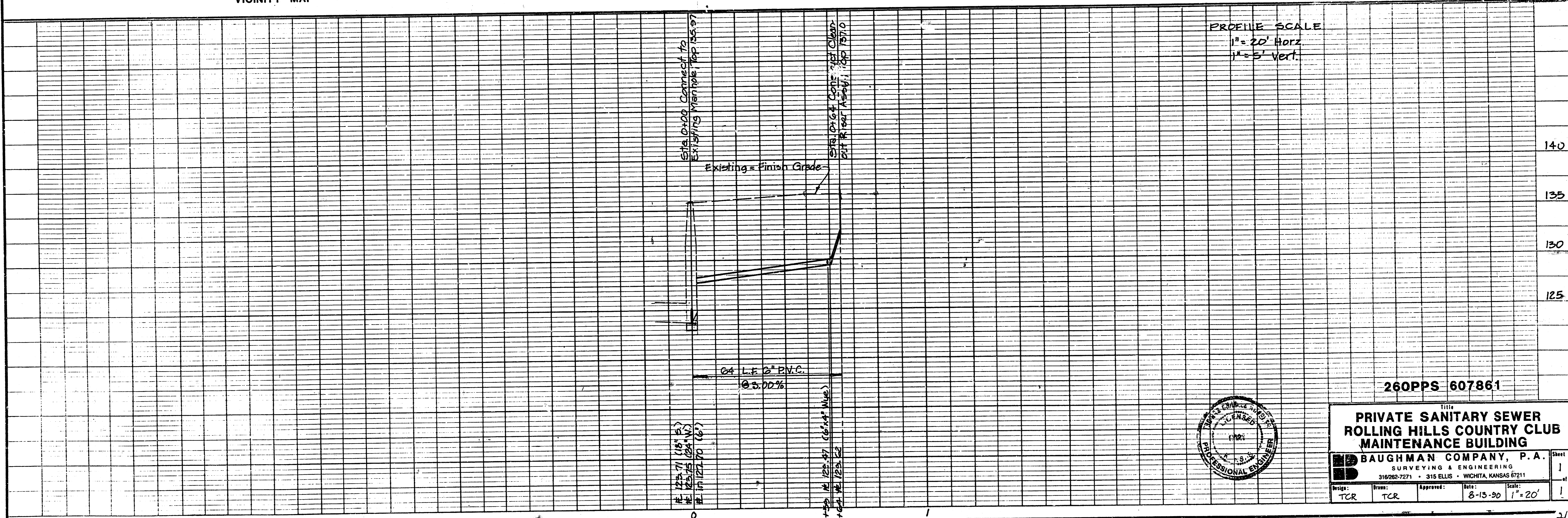
GENERAL NOTES

1. The Contractor shall verify underground utility locations through Kansas One-Call, prior to any excavation.
2. All work on this project shall be performed in accordance with the standard specifications for sanitary sewer construction for the City of Wichita.

APPROVED AS NOTED
 BY CITY ENGINEER OF WICHITA
 Sanitary Sewers VRH 9/24/90
 Storm Sewers _____
 Driveway Approaches _____
 Water Mains _____
 Paving _____

NOTE TO CONTRACTOR

INSPECTION AND TESTING FOR THIS PROJECT IS TO BE PROVIDED BY A LICENSED CONSULTING ENGINEERING FIRM UNDER CONTRACT WITH THE OWNER/DEVELOPER. SAID INSPECTION TO BE IN ACCORDANCE WITH THE CITY OF WICHITA STANDARD CONSTRUCTION ENGINEERING PRACTICES AND CERTIFIED BY A LICENSED PROFESSIONAL ENGINEER. NO WORK SHALL BE PERFORMED IN DEDICATED EASEMENTS OR PUBLIC RIGHT-OF-WAY BY THE CONTRACTOR WITHOUT SUCH INSPECTION NOR SHALL ANY WORK BE COMMENCED WITHOUT WRITTEN AUTHORIZATION BY THE CITY ENGINEER.



260PPS 607861

PRIVATE SANITARY SEWER
 ROLLING HILLS COUNTRY CLUB
 MAINTENANCE BUILDING

BAUGHMAN COMPANY, P.A.
 SURVEYING & ENGINEERING
 316282-7271 • 315 ELLIS • WICHITA, KANSAS 67211

Design: TCR Drawn: TCR Approved: 8-15-90 Scale: 1"=20'

FILMED FROM THE BEST AVAILABLE COPY