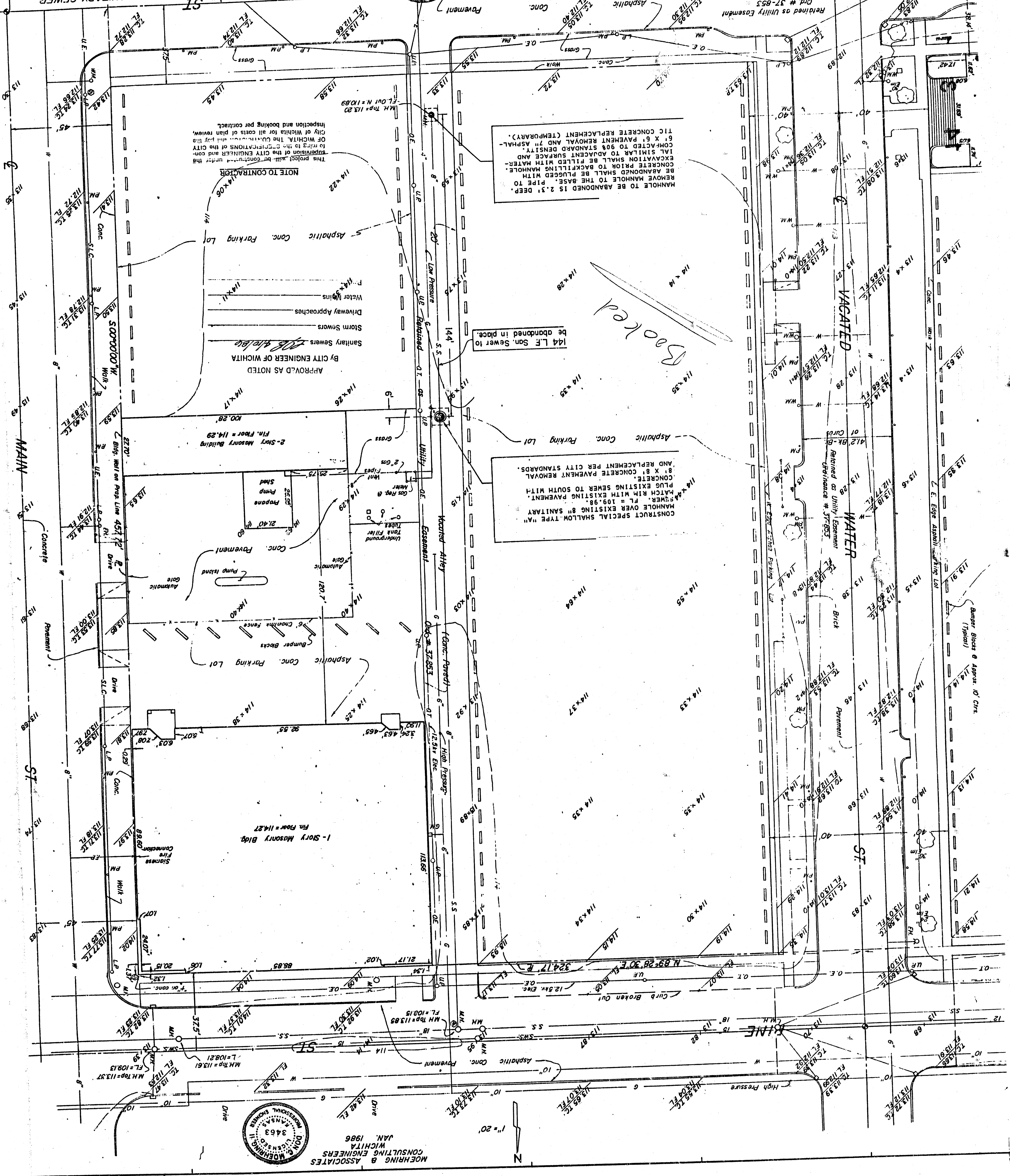
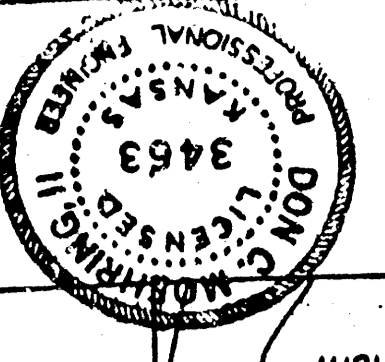


FILMED FROM THE BEST AVAILABLE COPY

Private Project No. 468-76-245-80001-000-000-062

MOHRING & ASSOCIATES CONSULTING ENGINEERS WICHITA  
PRIVATE SANITARY SEWER SEDGWICK COUNTY PARKING GARAGE AT MAIN & ELM. Partial Abandonment.

APRIL 1986  
BY CITY ENGINEER OF WICHITA  
APPROVED AS NOTED



MANHOLE TO BE ABANDONED IS 2.3' DEEP. REMOVE MANHOLE TO THE BASE. PIPE TO BE ABANDONED SHALL BE PLUGGED WITH CONCRETE PRIOR TO BACKFILLING MANHOLE. EXCAVATION SHALL BE FILLED WITH MATERIAL SIMILAR TO ADJACENT SURFACE AND COMPACTED TO 98% STANDARD DENSITY. 6" X 6" PAVEMENT REMOVAL AND 7" ASPHALTIC CONCRETE REPLACEMENT (TEMPORARY).

CONSTRUCT SPECIAL SHALLOW TYPE "A" MANHOLE OVER EXISTING 8" SANITARY SEWER. FL = 109.98. PLUG EXISTING SEWER TO SOUTH WITH CONCRETE. CONCRETE PAVEMENT REMOVAL AND REPLACEMENT PER CITY STANDARDS.

NOTE TO CONTRACTOR  
This project will be conducted under the supervision of the CITY ENGINEER and conforming to the CITY ENGINEER'S and CONTRACTOR'S agreement. The CONTRACTOR shall pay the City of Wichita for all costs of plan review, inspection and booking per contract.

MOHRING & ASSOCIATES CONSULTING ENGINEERS WICHITA  
JAN. 1986  
BY CITY ENGINEER OF WICHITA  
APPROVED AS NOTED

