

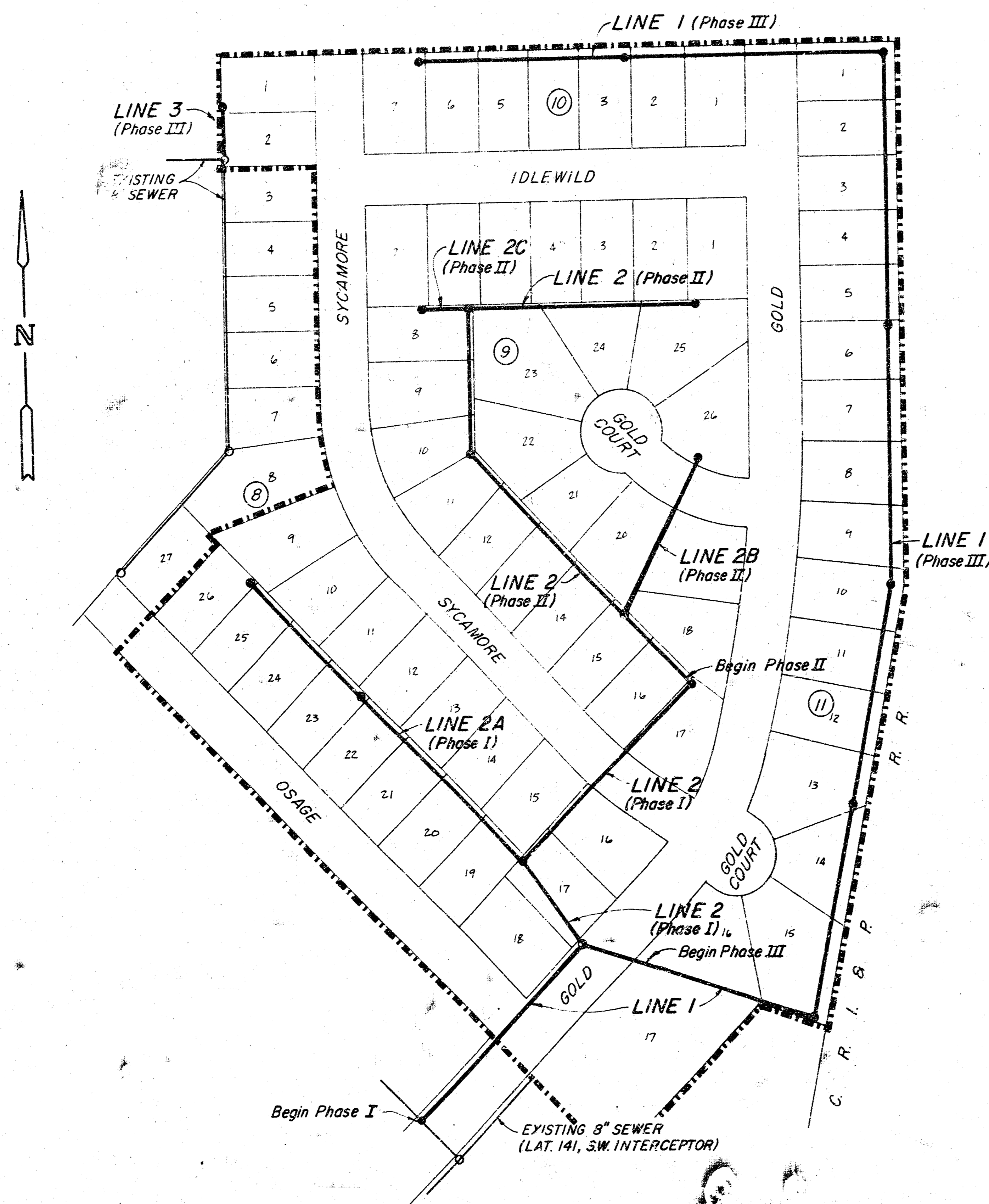
SANITARY SEWER EXTENSIONS

To Blocks 8, 9, 10, and 11

SOUTH SENECA GARDENS 4th ADDITION

Wichita, Kansas

City of Wichita Private Project No. 468-76-245-80000-000-000-008



TO BE CONSTRUCTED IN THREE PARTS

PHASE I

- Line 1, Sta. 0+00 to 2+93.50
- Line 2, Sta. 0+00 to 4+25.58
- Line 2A, Sta. 0+00 to 4+79

PHASE II

- Line 2, Sta. 4+25.58 to 12+69.26
- Line 2B, Sta. 0+00 to 2+10.16
- Line 2C, Sta. 0+00 to 0+60

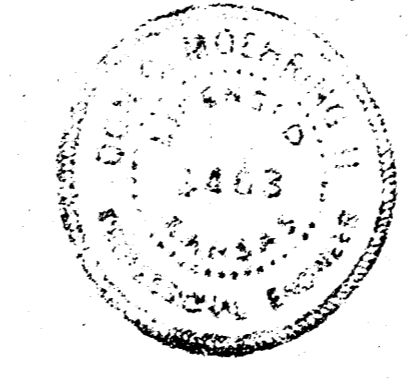
PHASE III

- Line 1, Sta. 2+93.50 to 23+32.24
- Line 3, Sta. 0+00 to 0+66.1

INDEX

- | | |
|---------|---|
| Sheet 1 | AREA PLAN |
| 2-4 | PLAN - PROFILE |
| 5 | APPURTENANCES |
| 6 | PLAT OF SOUTH SENECA GARDENS 4TH ADDITION |

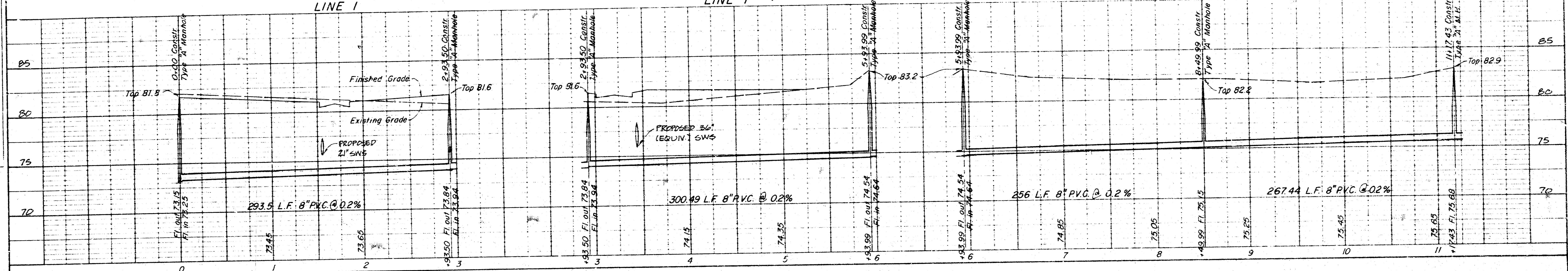
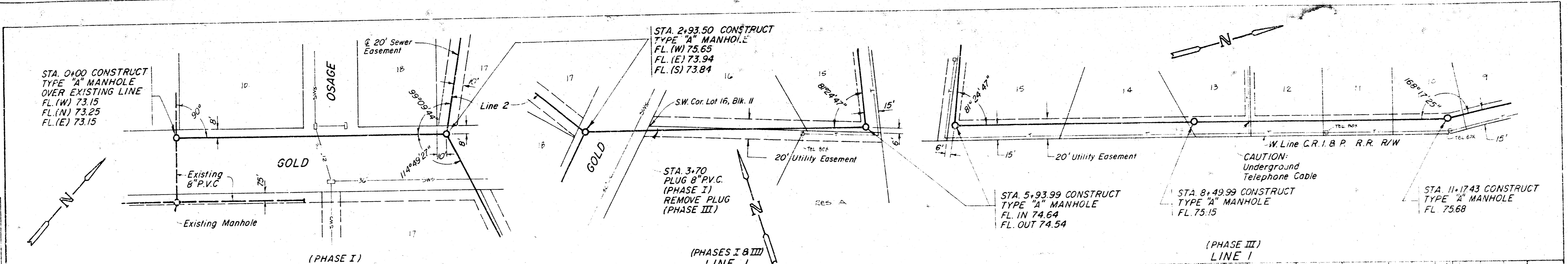
MOEHRING & ASSOCIATES
CONSULTING ENGINEERS
WICHITA
 January 1982
 Revised February 1983



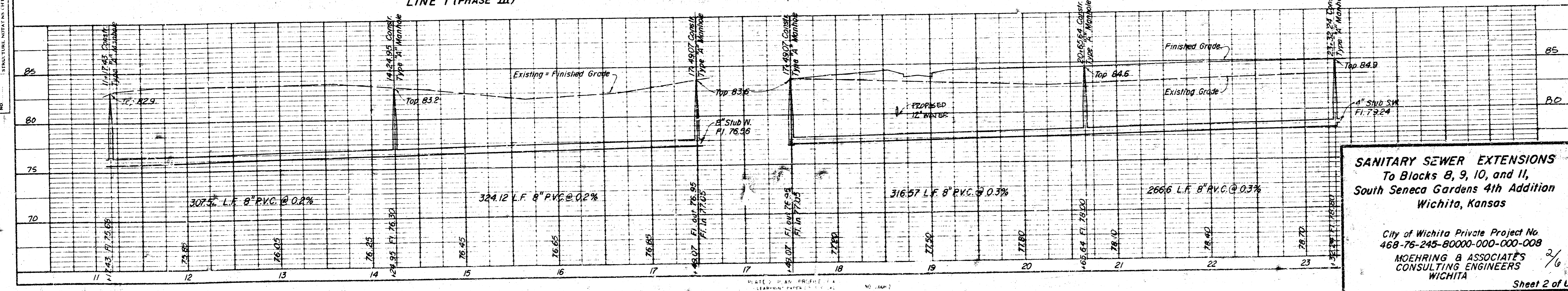
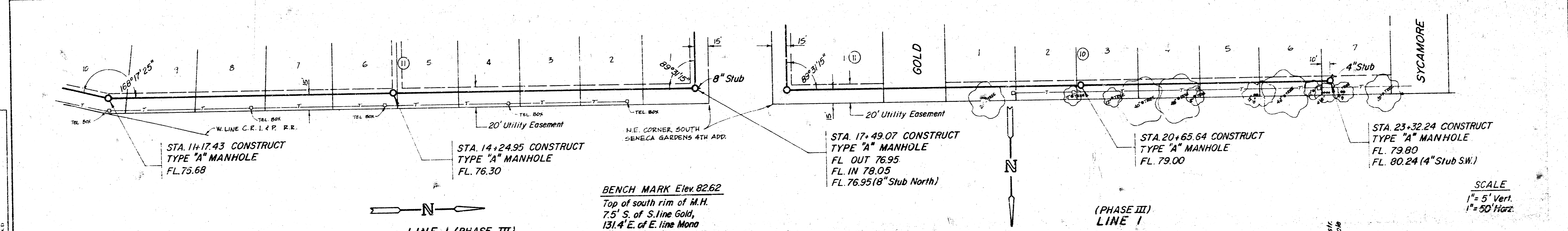
1-27-82
 J.E. H. [Signature]
 2-16-83

MOEHRING & ASSOCIATES SHALL BE RESPONSIBLE FOR THE DESIGN AND CONSTRUCTION OF THE PROJECT AND SHALL NOT BE RESPONSIBLE FOR THE ACCURACY OF THE DATA PROVIDED TO THEM BY THE CITY OF WICHITA. THE CITY OF WICHITA SHALL BE RESPONSIBLE FOR THE ACCURACY OF THE DATA PROVIDED TO THEM BY THE CITY OF WICHITA. THE CITY OF WICHITA SHALL BE RESPONSIBLE FOR THE ACCURACY OF THE DATA PROVIDED TO THEM BY THE CITY OF WICHITA.

PLAN
 DRAWN BY: [Name]
 CHECKED BY: [Name]
 DATE: [Date]
 SHEET NO. 2 OF 2



PROFILE
 DRAWN BY: [Name]
 CHECKED BY: [Name]
 DATE: [Date]
 SHEET NO. 2 OF 2



SANITARY SEWER EXTENSIONS
 To Blocks 8, 9, 10, and 11,
 South Seneca Gardens 4th Addition
 Wichita, Kansas

City of Wichita Private Project No.
 468-76-245-80000-000-000-008
 MOEHRING & ASSOCIATES
 CONSULTING ENGINEERS
 WICHITA

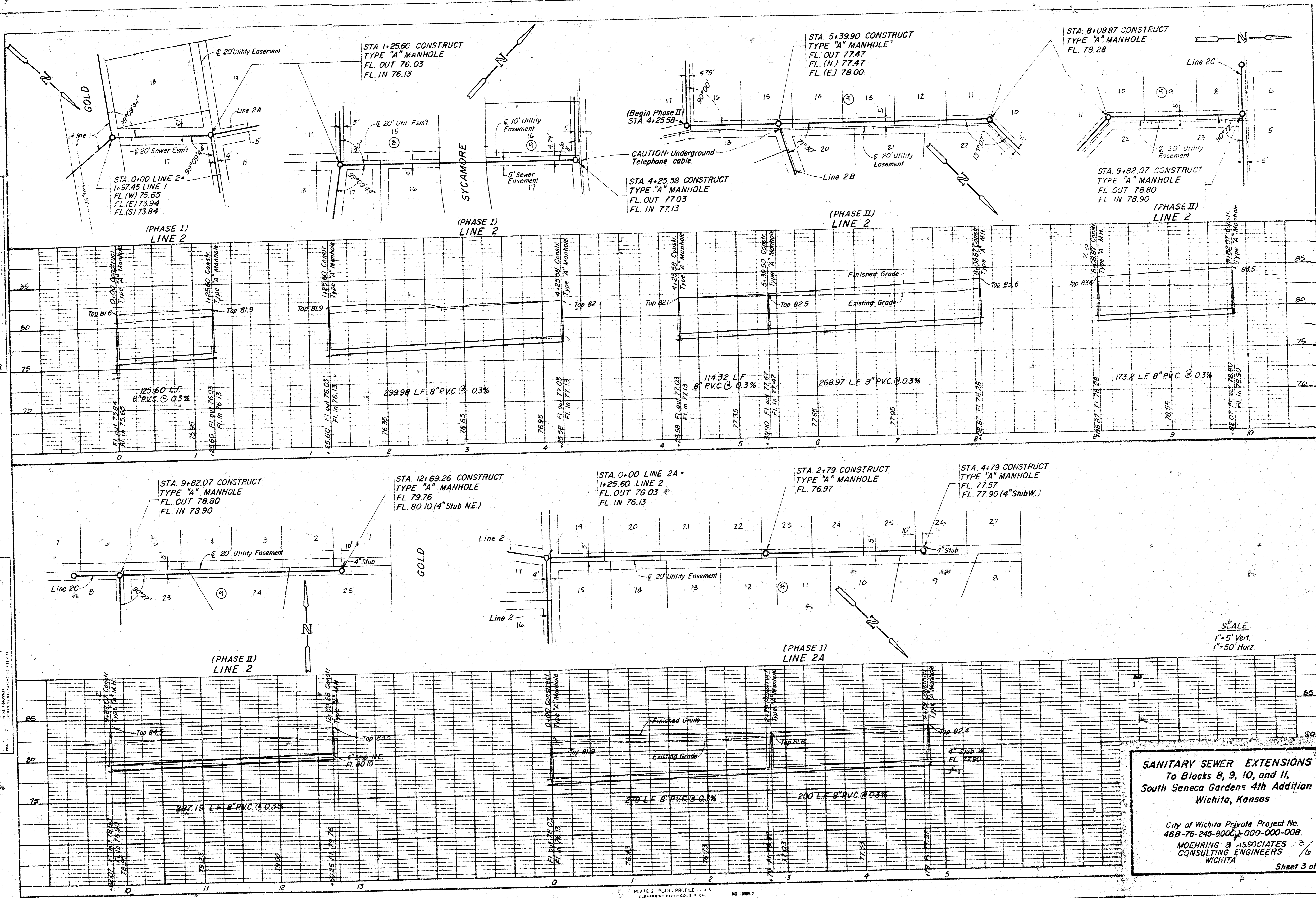
Scale:
 1" = 5' Vert.
 1" = 50' Horiz.

Sheet 2 of 2

FILMED FROM THE BEST COPY AVAILABLE

PLAN
 SURVEYED
 ALIGNED
 BY
 DATE

PROFILE
 SURVEYED
 ALIGNED
 BY
 DATE



SANITARY SEWER EXTENSIONS
 To Blocks 8, 9, 10, and 11,
 South Seneca Gardens 4th Addition
 Wichita, Kansas

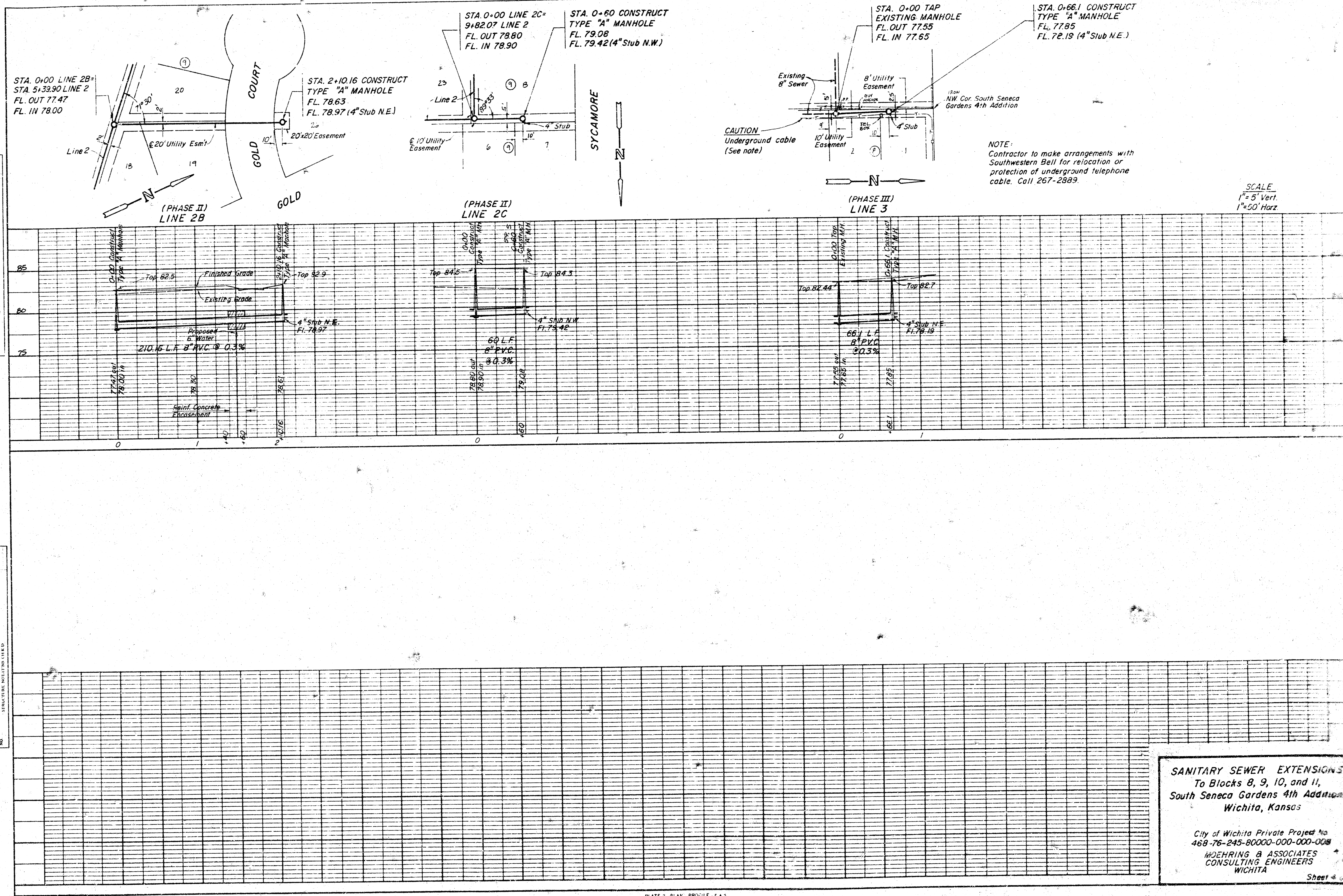
City of Wichita Private Project No.
 468-76-245-8000-000-000-008

MOEHRING & ASSOCIATES
 CONSULTING ENGINEERS
 WICHITA

Sheet 3 of 6

PLAN
 SHEET NO. 101
 DATE: 10/1/88
 BY: [Signature]
 CHECKED: [Signature]
 APPROVED: [Signature]
 PROJECT: SANITARY SEWER EXTENSIONS TO BLOCKS 8, 9, 10, AND 11, SOUTH SENECA GARDENS 4TH ADDITION, WICHITA, KANSAS

PROFILE
 SHEET NO. 102
 DATE: 10/1/88
 BY: [Signature]
 CHECKED: [Signature]
 APPROVED: [Signature]
 PROJECT: SANITARY SEWER EXTENSIONS TO BLOCKS 8, 9, 10, AND 11, SOUTH SENECA GARDENS 4TH ADDITION, WICHITA, KANSAS



NOTE:
 Contractor to make arrangements with Southwestern Bell for relocation or protection of underground telephone cable. Call 267-2889.

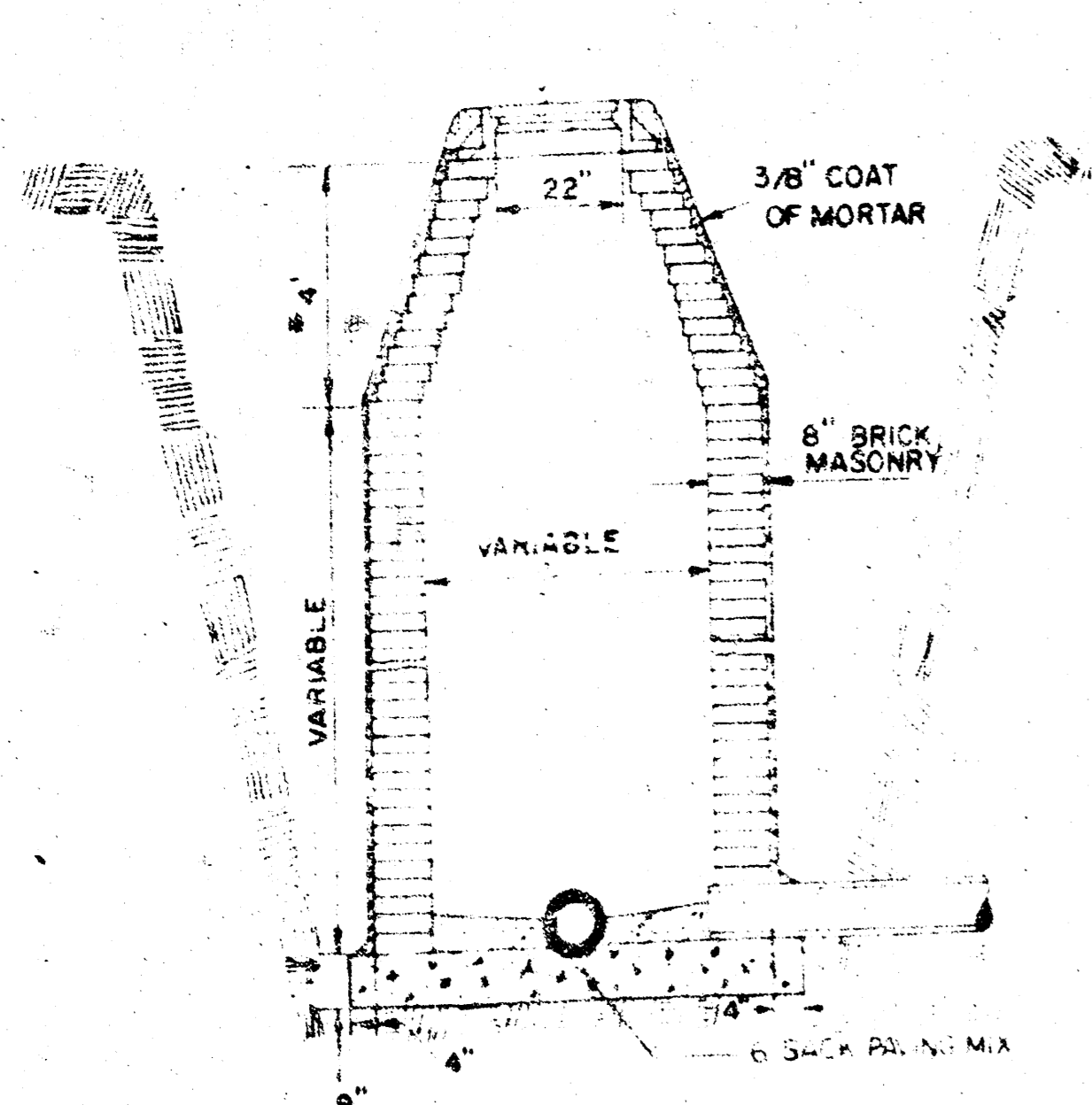
SCALE
 1" = 5' Vert.
 1" = 50' Horz.

SANITARY SEWER EXTENSIONS
 To Blocks 8, 9, 10, and 11,
 South Seneca Gardens 4th Addition
 Wichita, Kansas

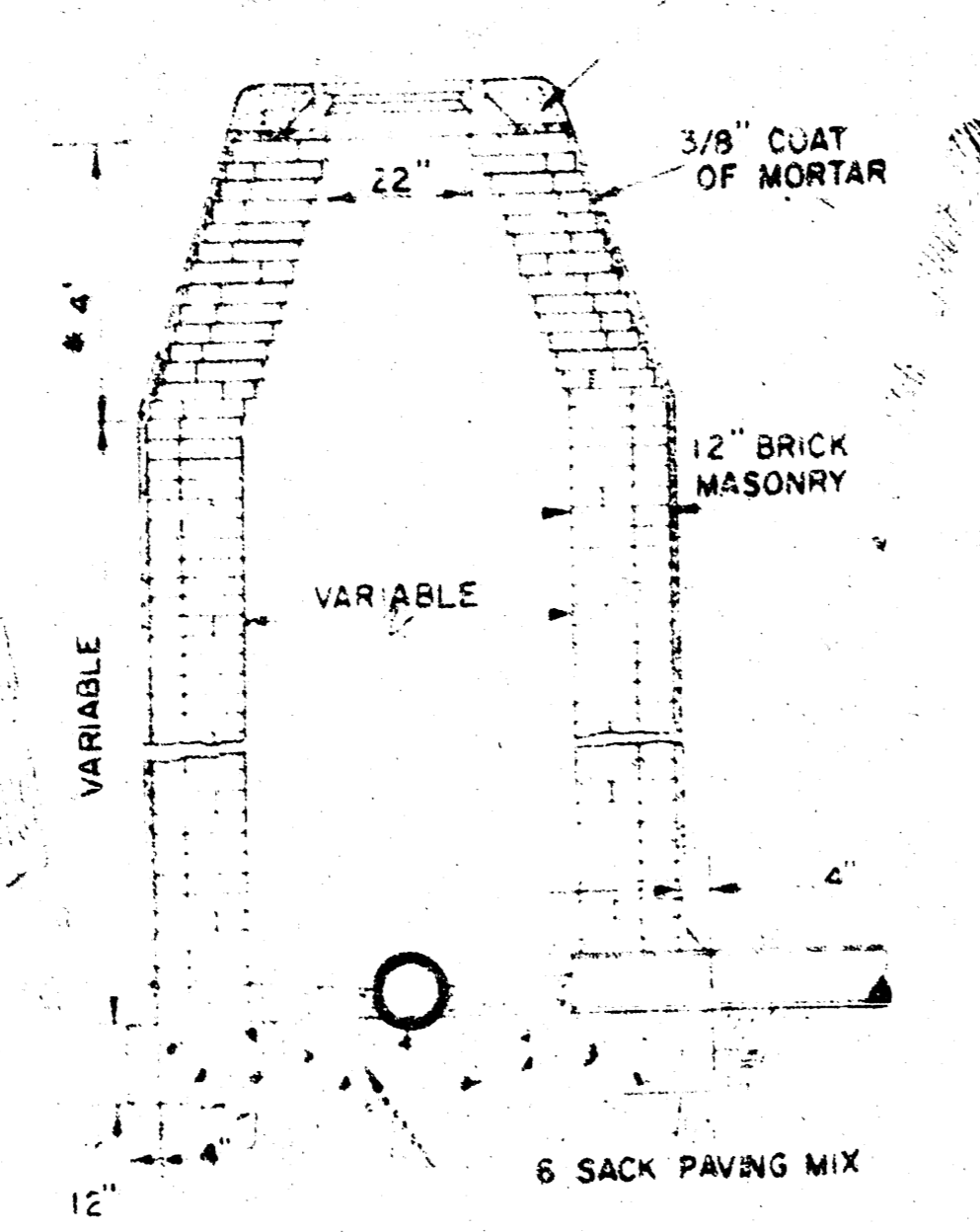
City of Wichita Private Project No. 468-76-245-80000-000-000-000
 MOHRING & ASSOCIATES
 CONSULTING ENGINEERS
 WICHITA

Sheet 4 of 4

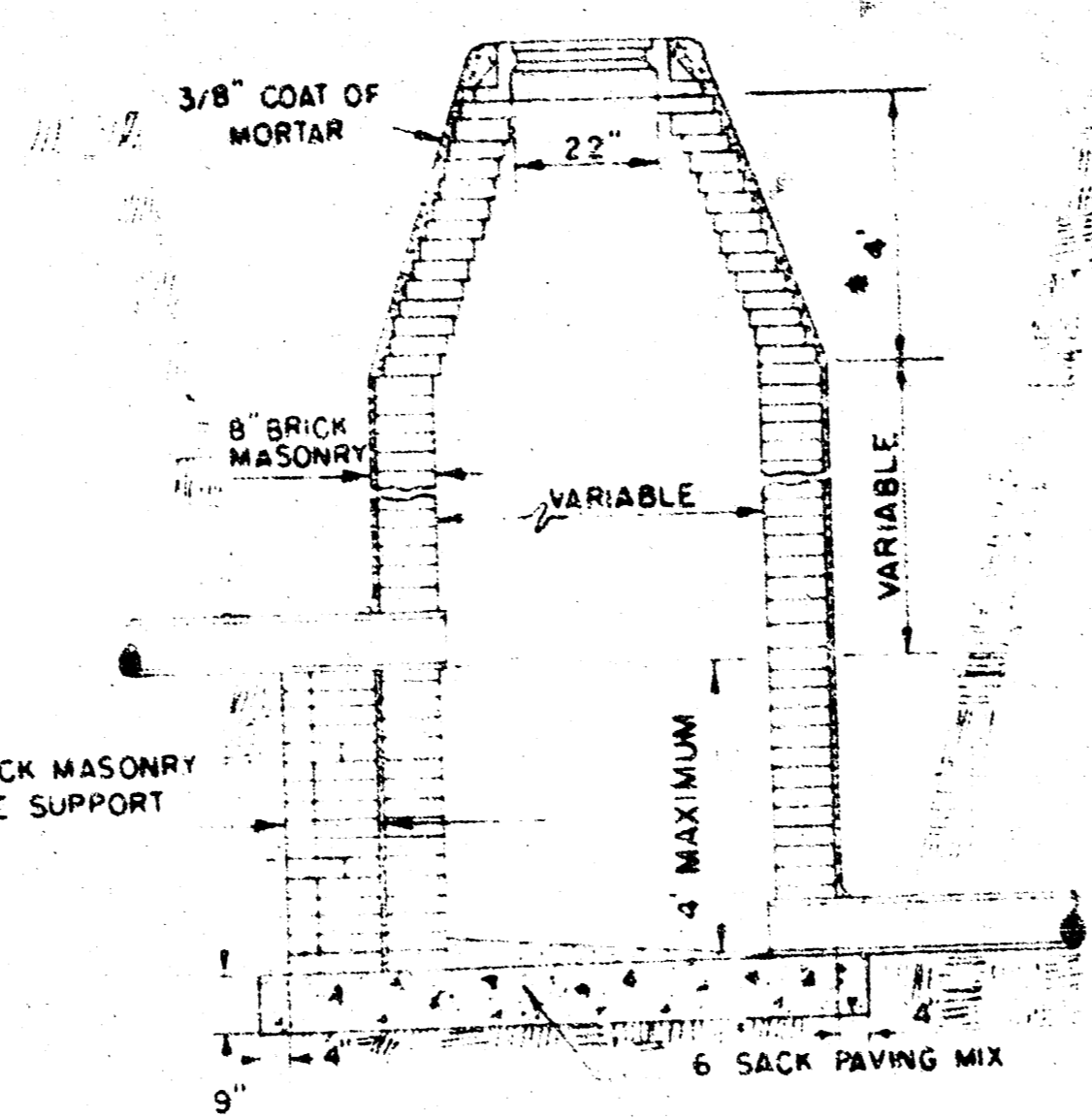
GROUT TO BE PLACED AROUND MANHOLE RING ONLY WHEN MANHOLE IS CONSTRUCTED IN UNPAVED AREAS. (TYPICAL ALL MANHOLES)



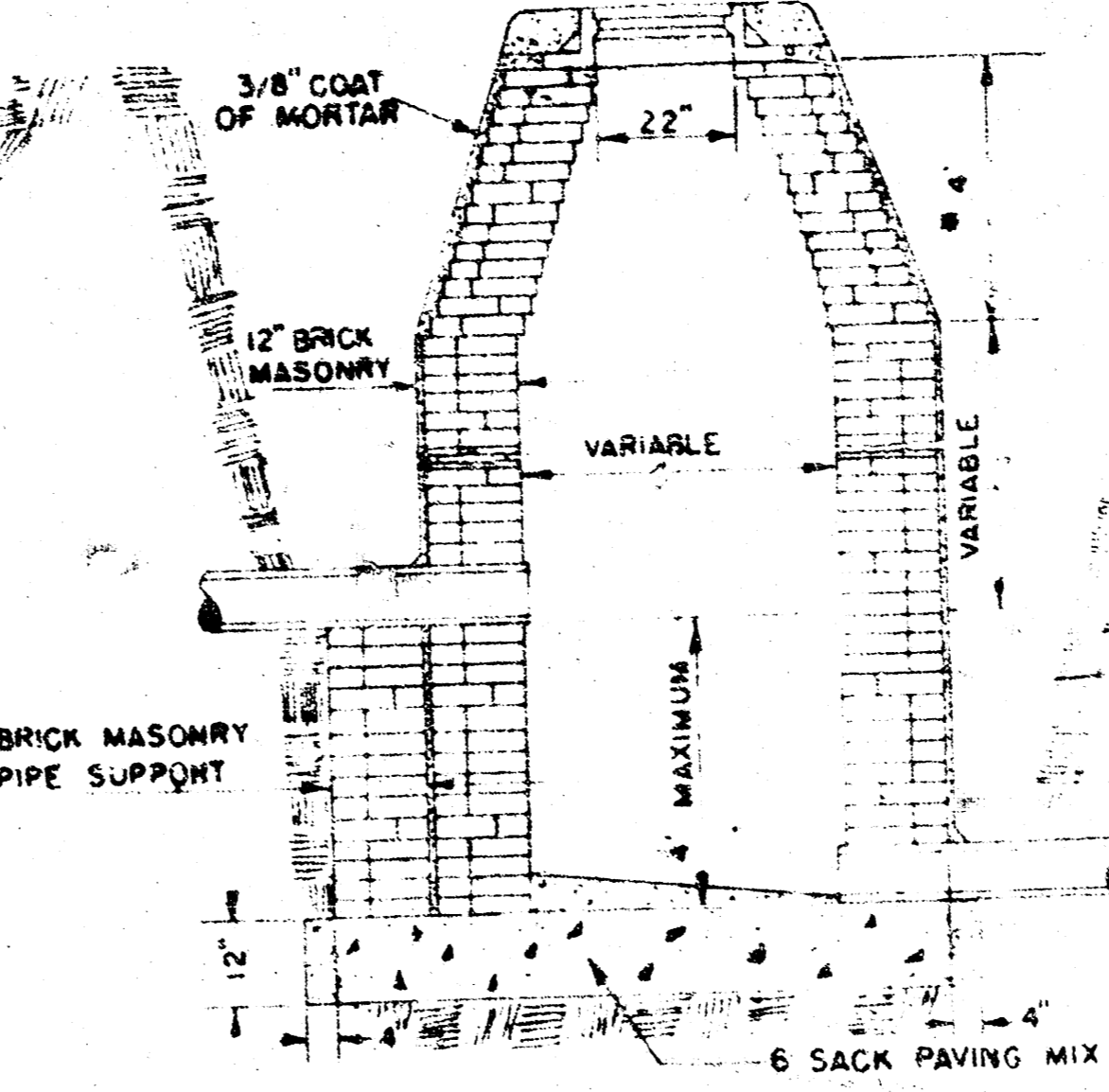
STANDARD MANHOLE TYPE "A"



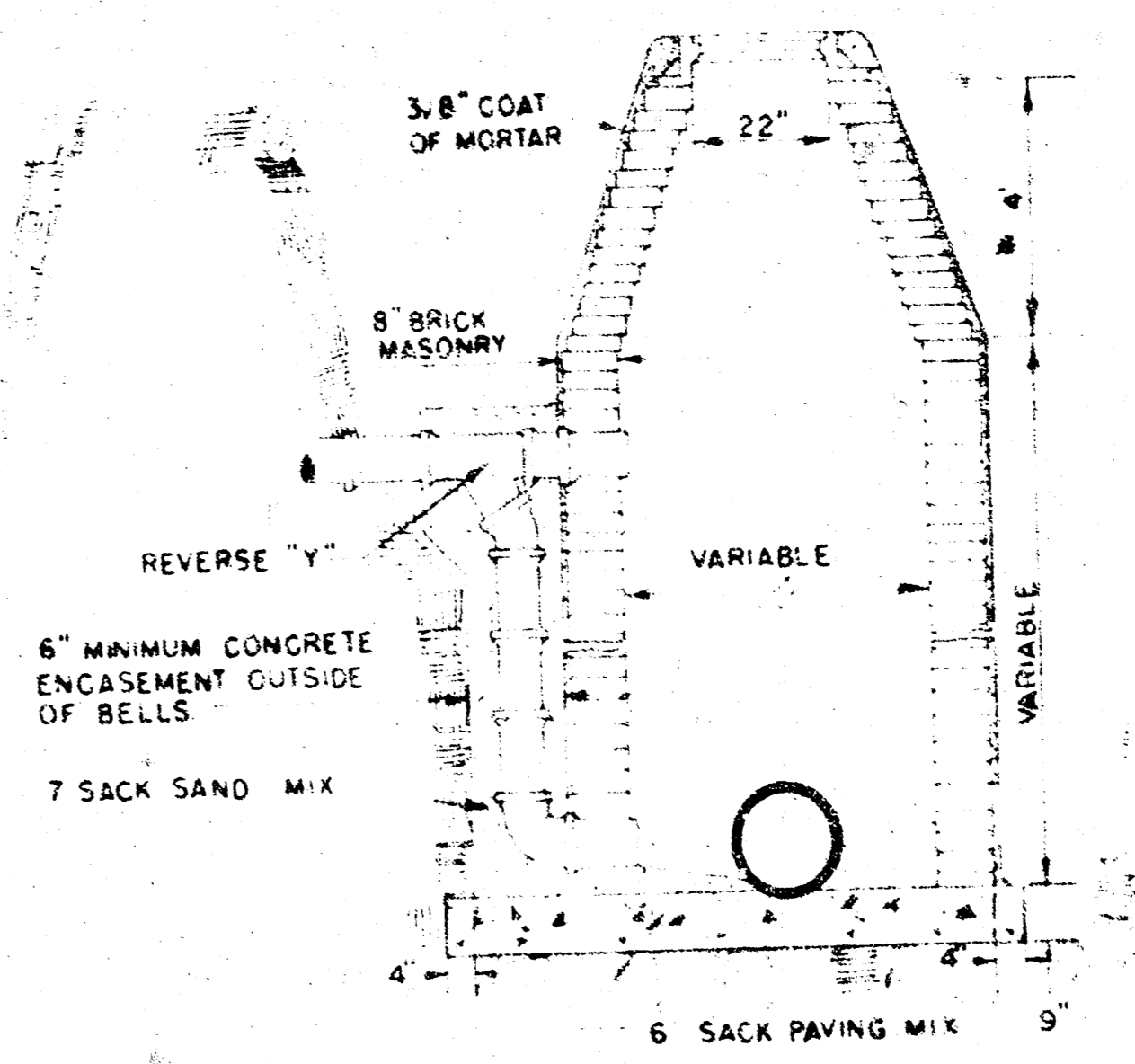
STANDARD MANHOLE TYPE "B"



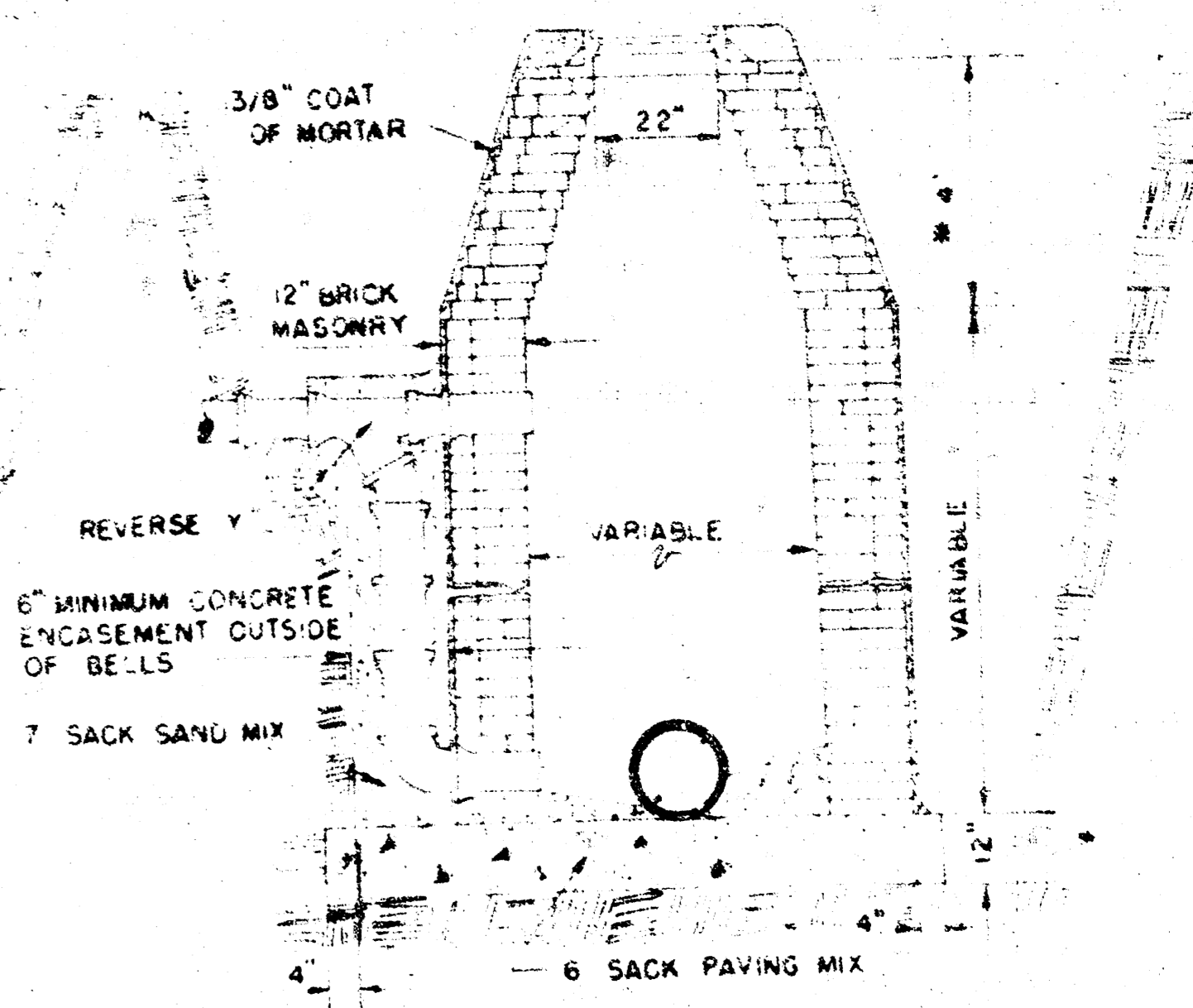
DROP MANHOLE TYPE "A"



DROP MANHOLE TYPE "B"



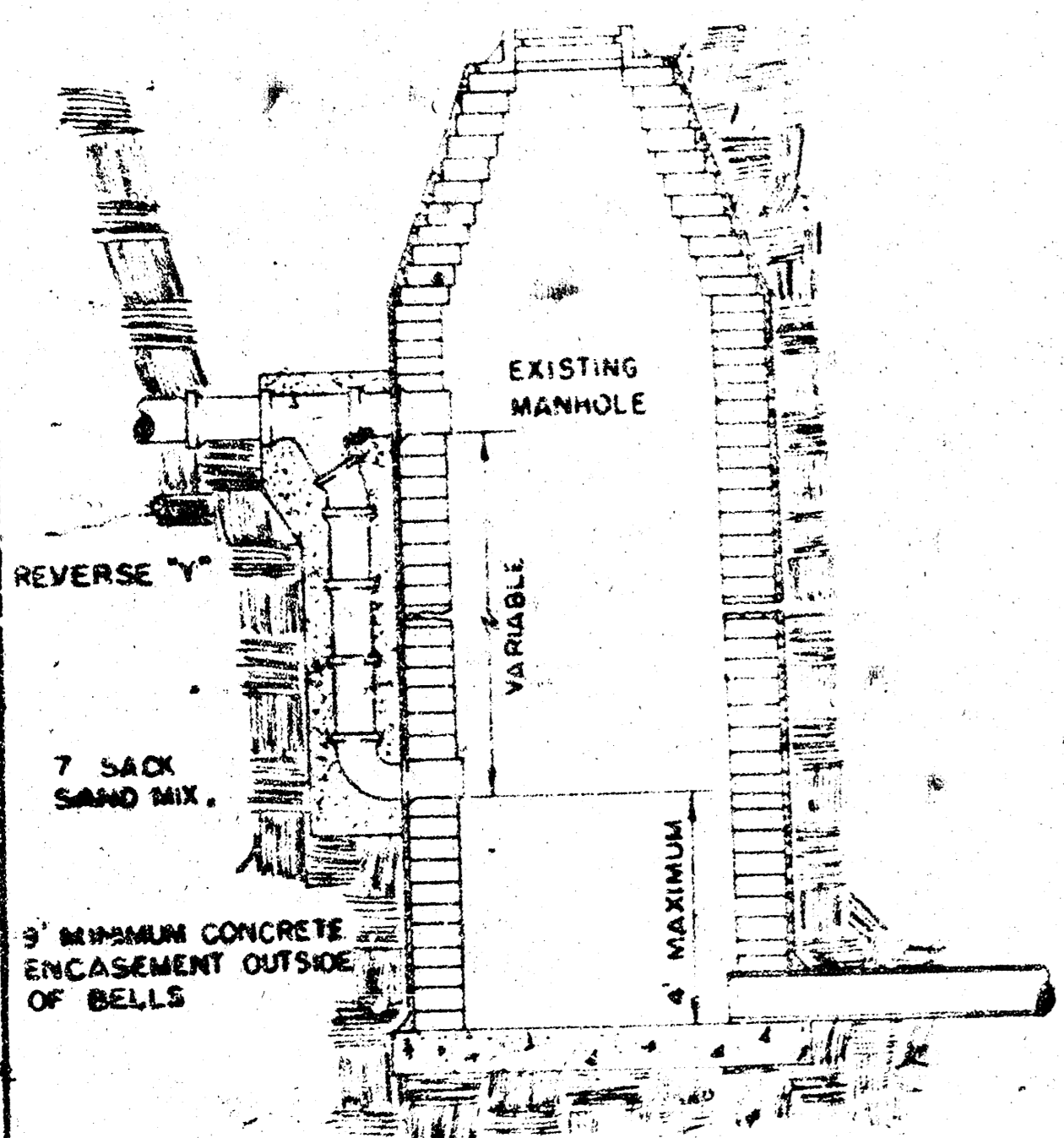
OUTSIDE DROP MANHOLE TYPE "A"



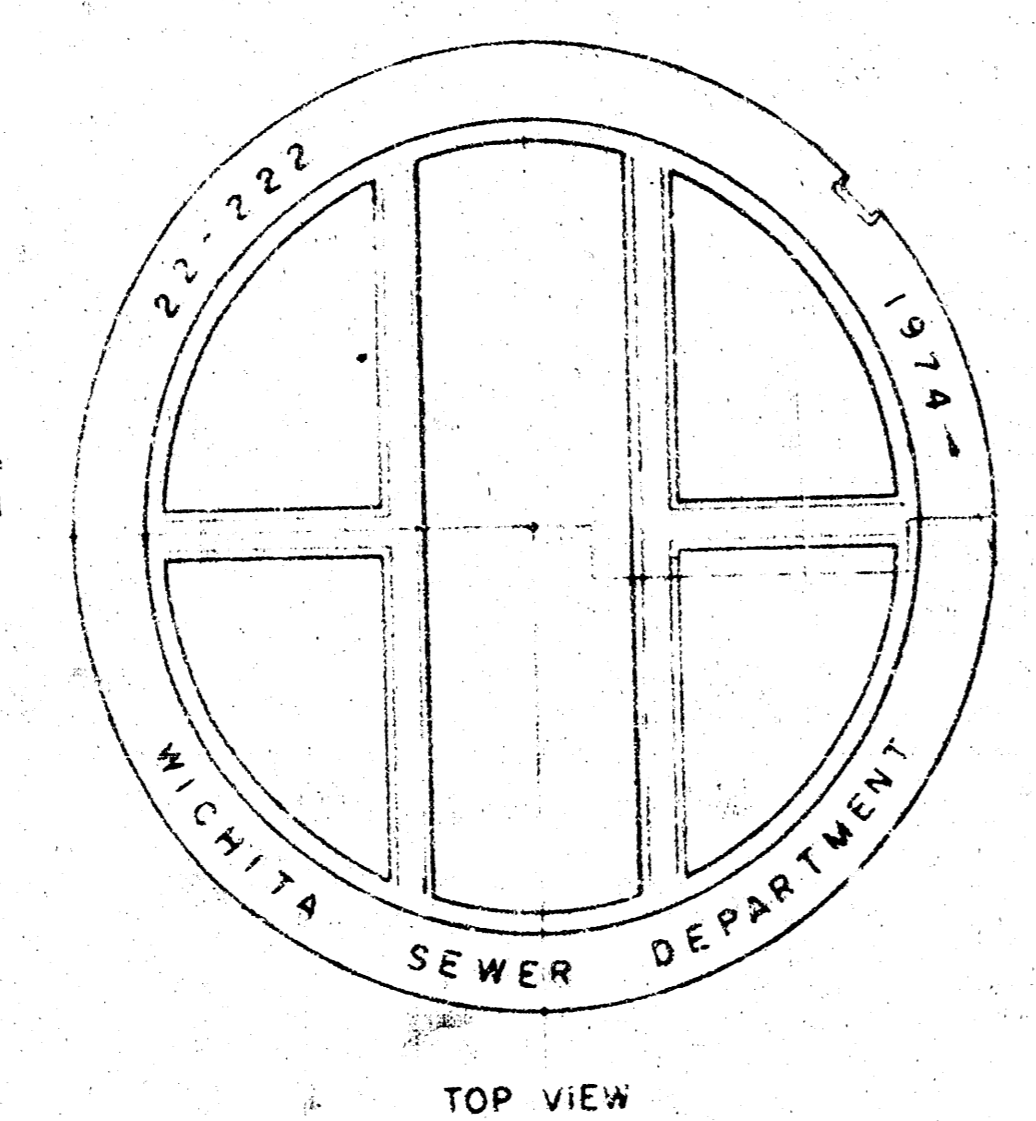
OUTSIDE DROP MANHOLE TYPE "B"

* DRAW = 6" ON 5' DIA. MH.

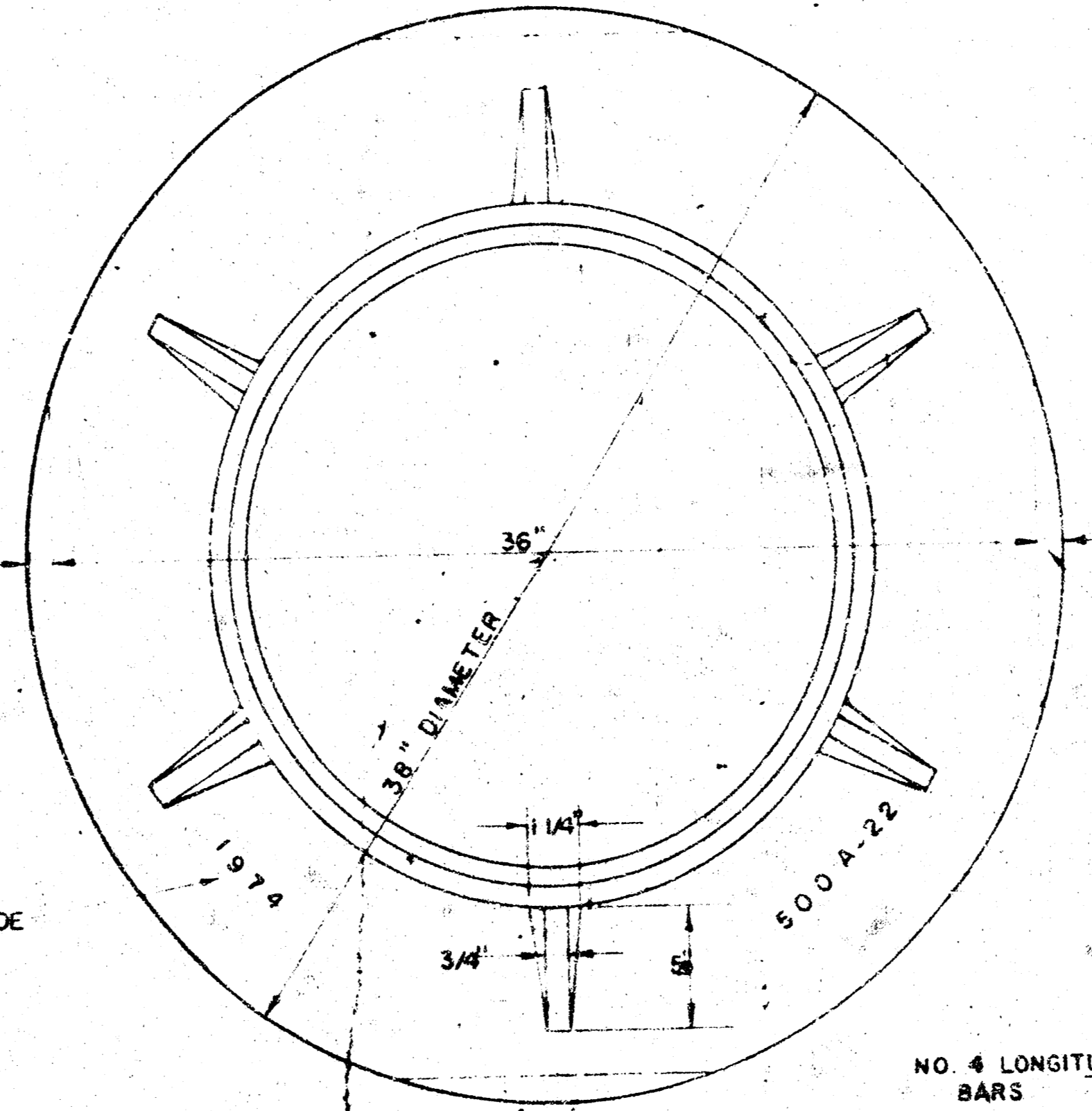
NOTE: REINFORCING STEEL SHALL BE INSTALLED IN THE MANHOLE BASES 6" ABOVE THE BOTTOM. REINFORCING STEEL SHALL CONSIST OF NO. 4 BARS PLACED ON 6" CENTERS IN BOTH DIRECTIONS. THE COST OF REINFORCING STEEL IS TO BE INCLUDED IN THE PRICE BID FOR THE MANHOLE.



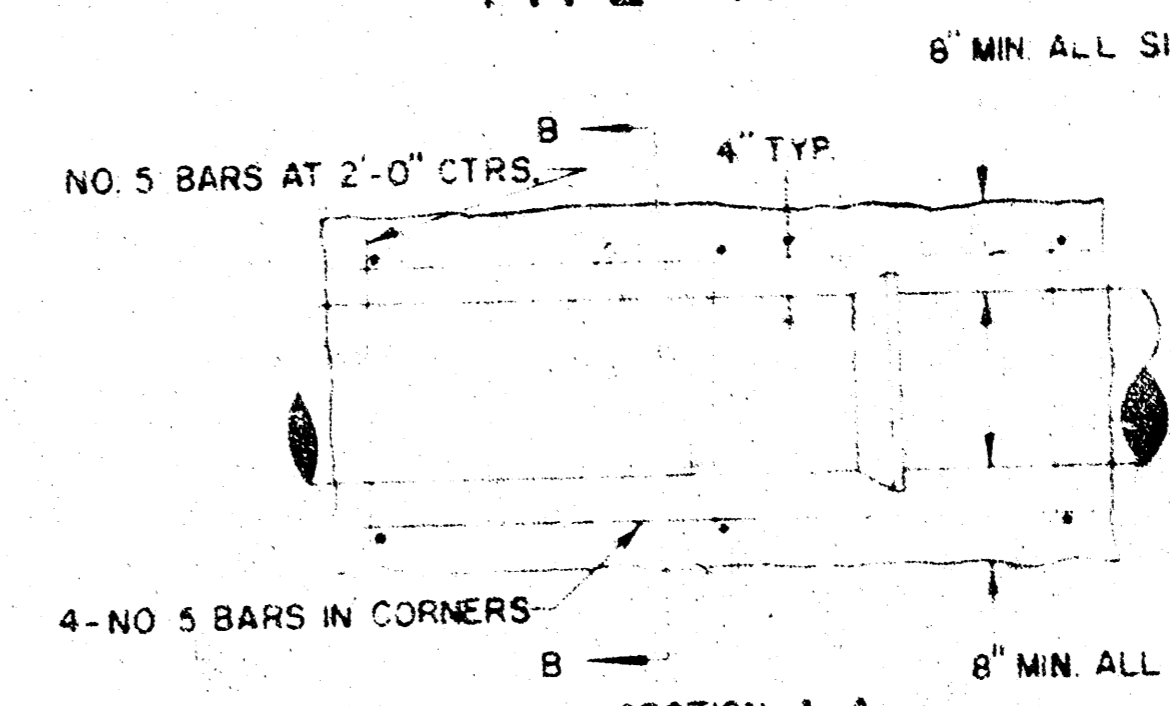
DETAIL OF DROP STACK FOR EXISTING MANHOLES IN GROUND WATER



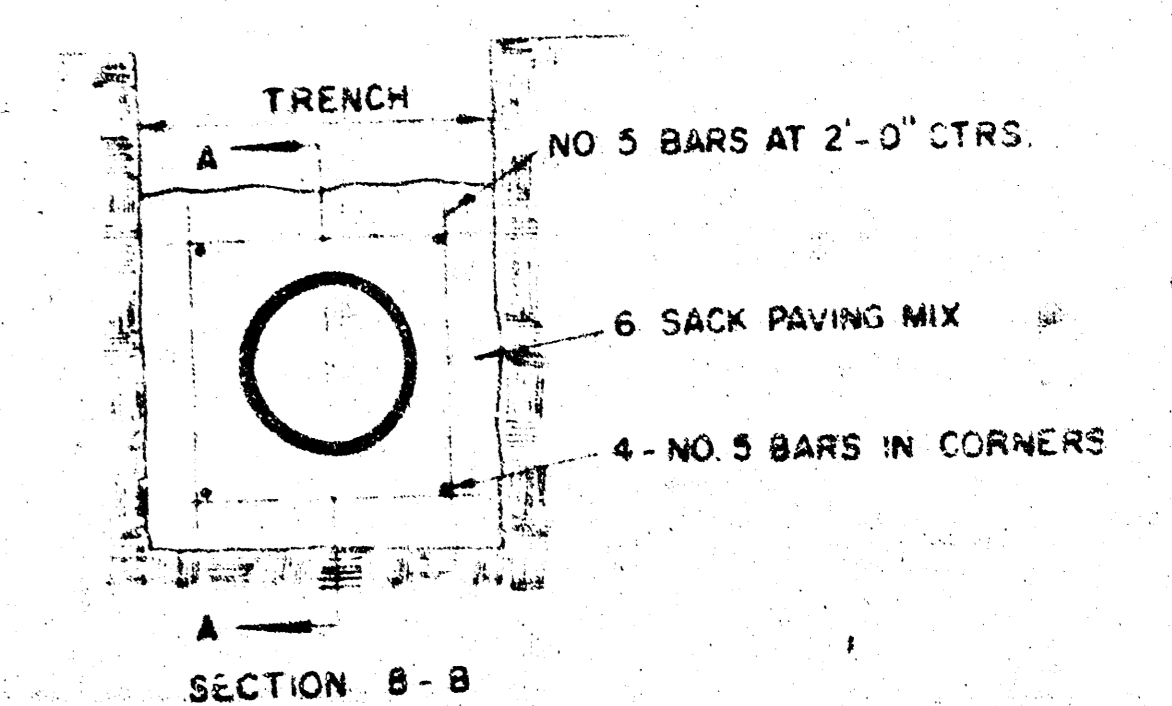
MANHOLE COVER WEIGHT 110 LBS.



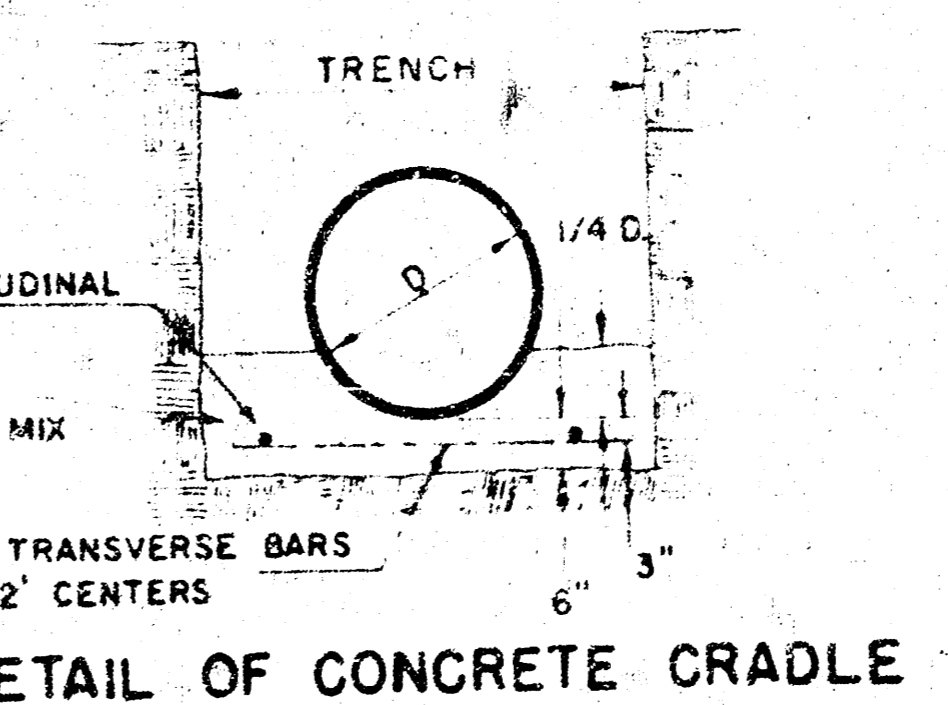
MANHOLE RING WEIGHT 325 LBS. RING NO. 500A WEIGHT 800 LBS. RING NO. 500AS



REINFORCED CONCRETE ENCASEMENT



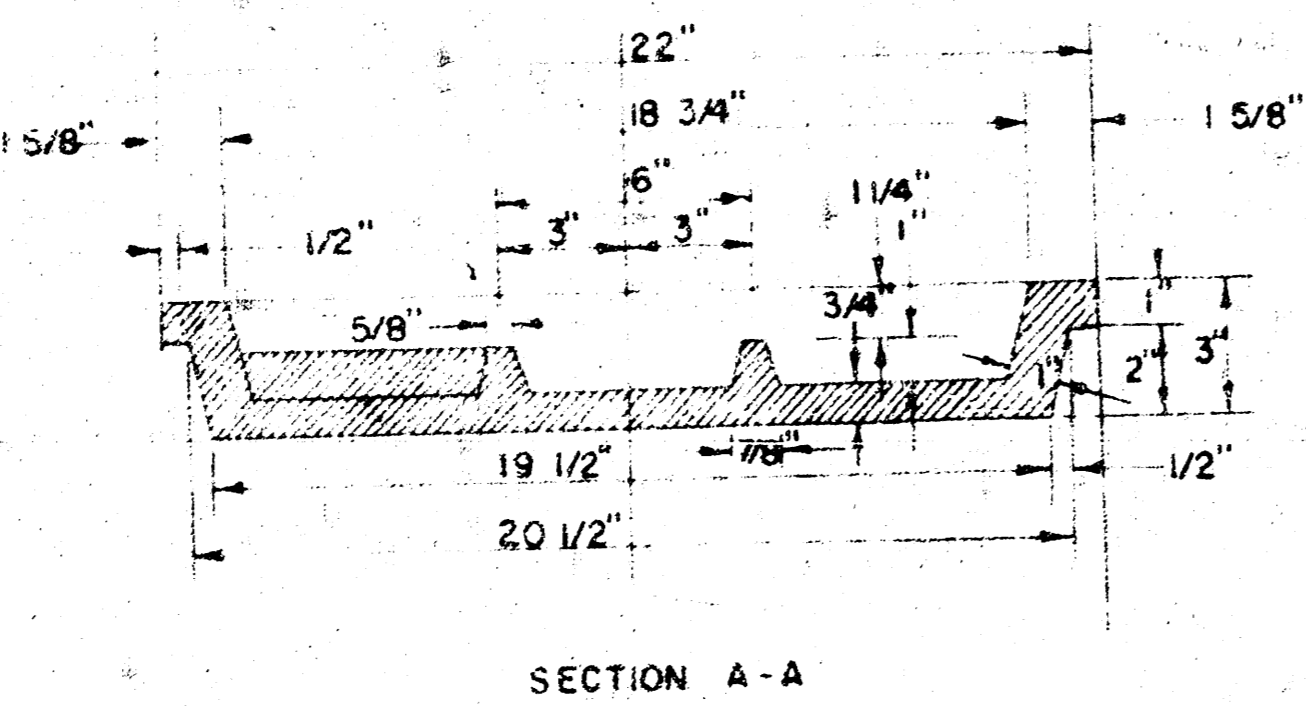
NOTE: CONCRETE ENCASEMENT AND CONCRETE CRADLE SHALL BEGIN AND END AT A JOINT WHEN CLAY PIPE IS USED.



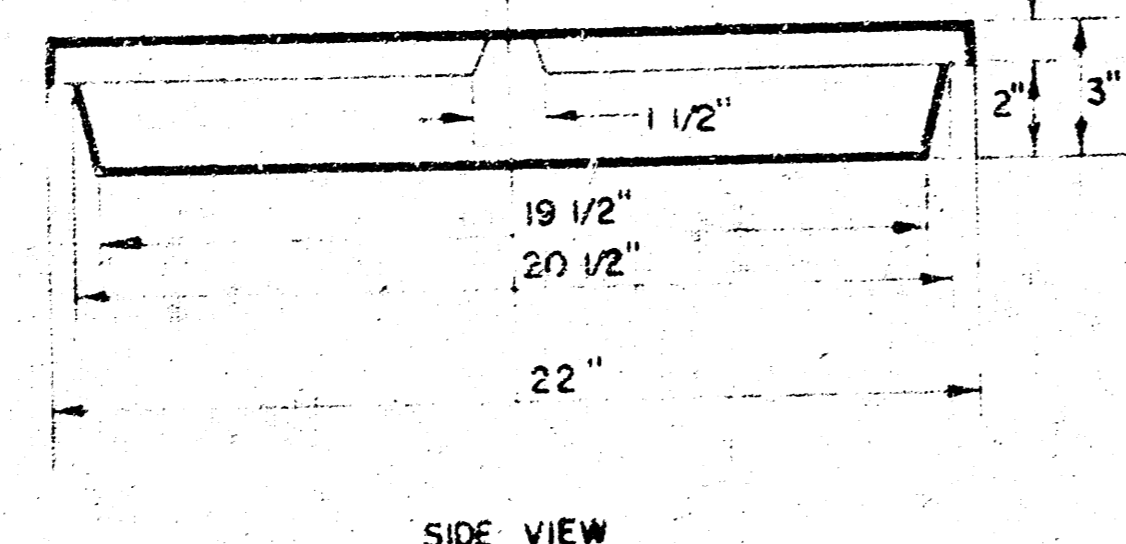
DETAIL OF CONCRETE CRADLE

GENERAL NOTES

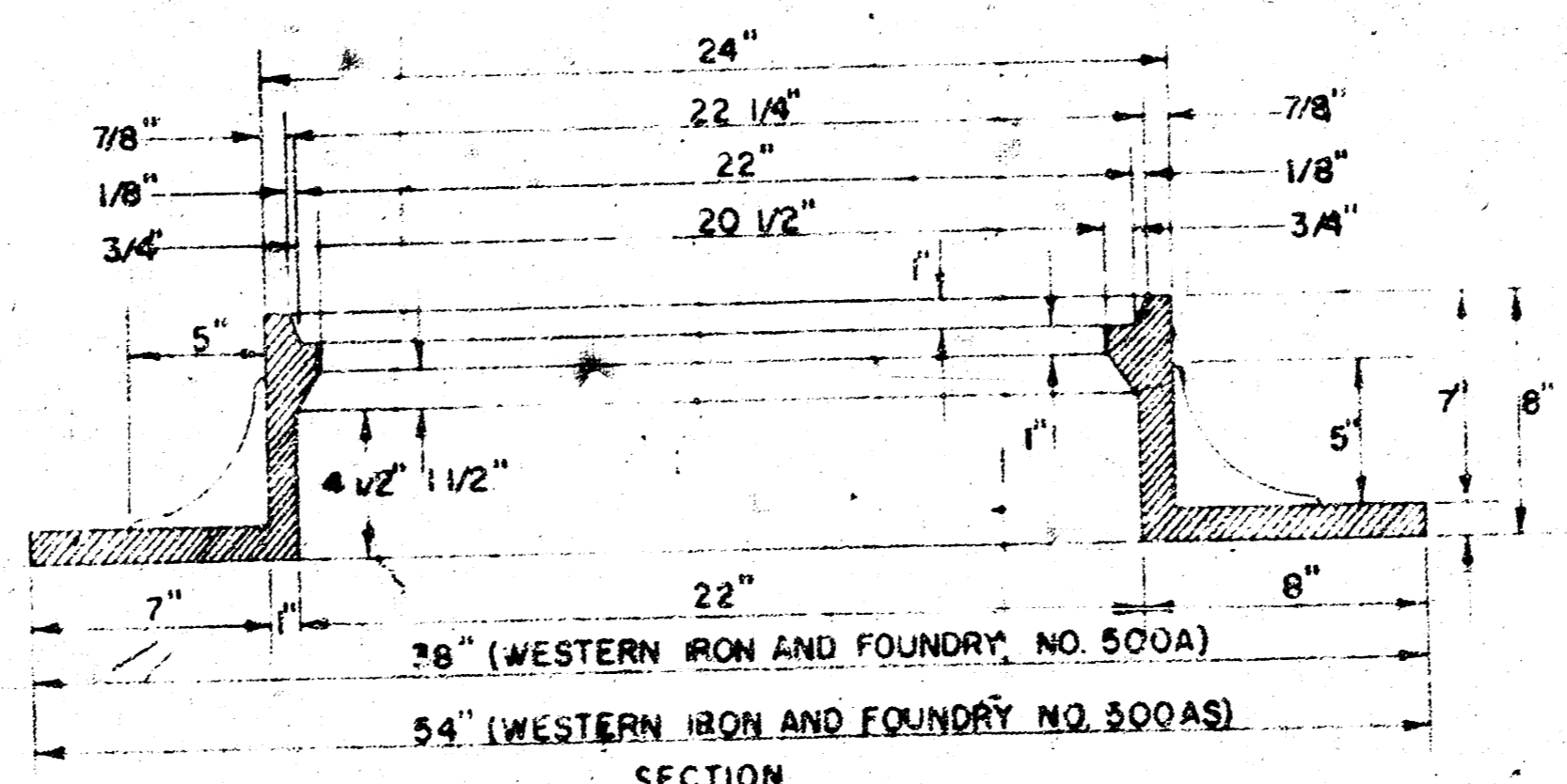
- MORTAR USED IN MASONRY CONSTRUCTION SHALL CONTAIN 8 SACKS OF CEMENT PER CUBIC YARD.
- STANDARD MANHOLES TYPE "A" OR TYPE "B" AND STANDARD DROP MANHOLES TYPE "A" OR TYPE "B" SHALL BE BID AS STANDARD MANHOLES FOR THE TYPE AND DIAMETER INDICATED.
- OUTSIDE DROP MANHOLES SHALL BE BID AS STANDARD OUTSIDE DROP MANHOLES FOR THE TYPE AND DIAMETER INDICATED. ALL MANHOLE DIAMETERS WILL BE 4 UNLESS INDICATED OTHERWISE.
- MANHOLES WITH PIPE SIZES LARGER THAN 24" SHALL BE 5' DIAMETER.
- THE FLOORS OF ALL MANHOLES SHALL BE SHAPED TO INCREASE HYDRAULIC EFFICIENCY USING 8 SACK SAND MIX CONCRETE.
- PIPES INSTALLED WITHIN THE MANHOLE EXCAVATION SHALL BE CRADLED WITH CONCRETE TO THE LIMITS OF THE MANHOLE EXCAVATION. COST OF CRADLE WITHIN MANHOLE EXCAVATION SHALL BE INCLUDED IN THE PRICE BID FOR THE MANHOLE. CRADLE SHALL EXTEND TO FIRST JOINT OUTSIDE OF MANHOLE WHEN CLAY PIPE IS USED.



MANHOLE COVER

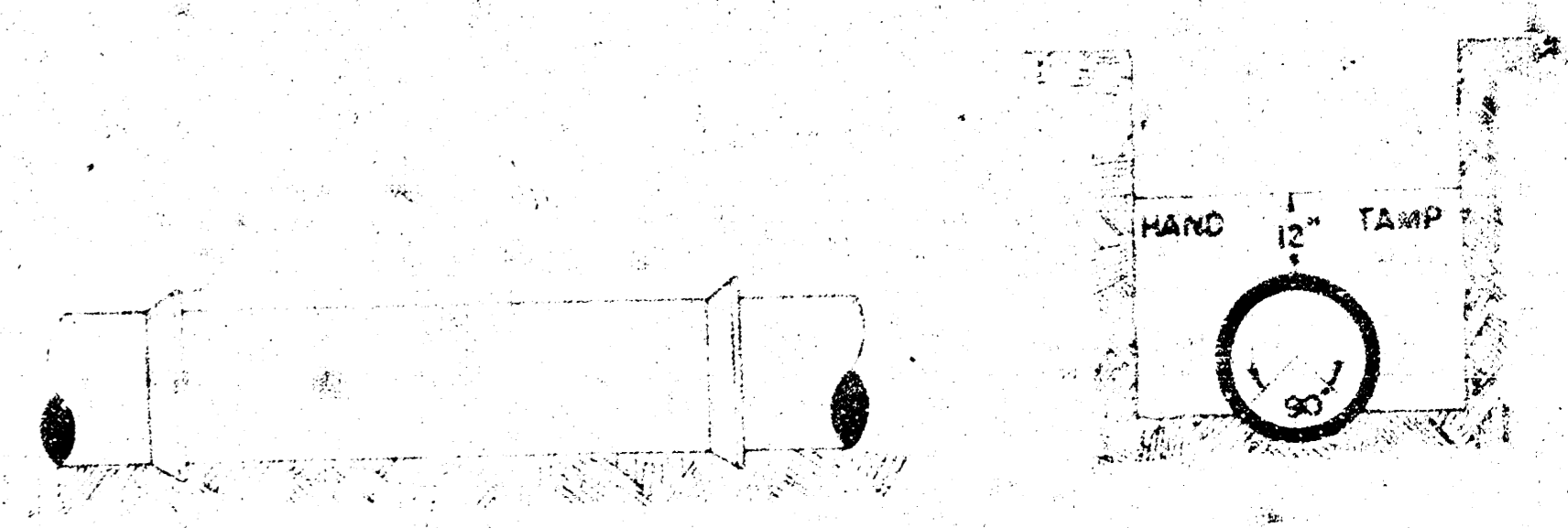


MANHOLE COVER



MANHOLE RING

OUTSIDE CIRCUMFERENCE OF COVER AND THE INNER FACE AND SEAT OF RING TO BE MACHINE FIT.



ORDINARY BEDDING METHOD STORM SEWER PIPE

REVISED 4-13-77
 DETAILS OF
SEWER APPURTENANCES
 ADOPTED AS STANDARD DESIGN
 BY
 ENGINEERING DIVISION
 CITY OF WICHITA, KANSAS 5/6
 1974 Sheet 5 of 6

12-5-21

SOUTH SENECA GARDENS FOURTH ADDITION WICHITA, SEDGWICK COUNTY, KANSAS

State of Kansas, County of Sedgwick, SS.
I, Kenneth O. Taylor, Civil Engineer in said State and County, do hereby certify that I have surveyed and platted "SOUTH SENECA GARDENS FOURTH ADDITION", Wichita, Sedgwick County, Kansas and that the accompanying plat is a true and correct exhibit of said survey described as follows: That part of the SW 1/4 of Section 20, T28S, R1E of the 6th P.M., Sedgwick County, Kansas, except the N 1/2 of the N 1/2 of said SW 1/4, lying west of the west right of way line of the C.R.I. and P. Railroad, except the following described property:

- All of South Seneca Gardens Third Addition, Sedgwick County, Kansas.
- Beginning at a point on the south line of said SW 1/4, 429 feet east of the SW corner of said SW 1/4; thence north parallel to the west line of said SW 1/4, 410 feet; thence east parallel to the south line of said SW 1/4, 285 feet; thence south parallel to said west line, 410 feet to the south line of said SW 1/4; thence west 285 feet to the point of beginning.
- Beginning at a point on the west line of said SW 1/4, 653.5 feet north of the SW corner of said SW 1/4; thence north on said west line 163 feet; thence east at an interior angle of 90°28', 274 feet; thence south parallel to the west line of said SW 1/4, 165 feet; thence west 274 feet to the point of beginning.

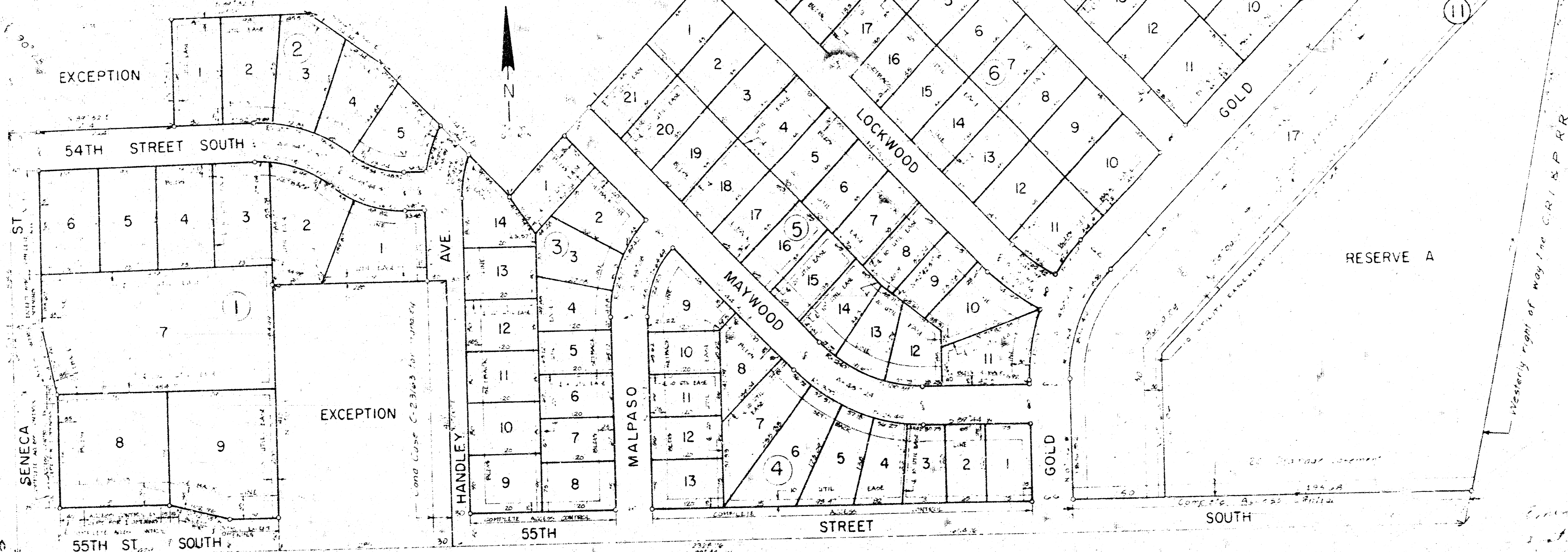
Kenneth O. Taylor Civil Engineer
Kenneth O. Taylor

Know all men by these presents that we, May Morris Rittenoure and Lawrence W. Rittenoure, wife and husband, have caused the land described in the Civil Engineer's certificate to be platted into lots, blocks, a reserve and streets to be known as "SOUTH SENECA GARDENS FOURTH ADDITION", Wichita, Sedgwick County, Kansas. Utility easements as indicated on the plat are hereby granted for the construction and maintenance of all public utilities. The streets are hereby dedicated to and for the use of the public. Reserve A, Block 11, is reserved for a lake. Drainage easements as indicated on the plat are hereby granted for drainage purposes.

All abutter's rights of access to or from 55th St. South over and across the south line of Lots 8 and 9, Block 1, Lots 8 and 9, Block 3, Lots 1, 2, 3, 4, 5, 6 and 13, Block 4, Lot 17, Block 11 and Reserve A, Block 11 are hereby granted to the City of Wichita, provided, however, that Lots 8 and 9, Block 1 shall have access to 55th St. South at one location for each lot over and across the south line of Lot 8, Block 1, except the west 40 feet of said south line and except the east 15 feet of said south line and over and across the south line of Lot 9, Block 1, except the west 15 feet of said south line, such location to be established by the City Engineer of Wichita, Kansas, and provided, further, that Lots 8 and 9, Block 1 shall have one joint access to 55th St. South over and across the east 15 feet of the south line of Lot 8, Block 1 and over and across the west 15 feet of the south line of Lot 9, Block 1.

All abutter's rights of access to or from Seneca St. over and across the west line of Lots 5, 7 and 8, Block 1, are hereby granted to the City of Wichita, provided, however, that Lots 7 and 8, Block 1 shall have access to Seneca St. at one location for each lot over and across the west line of Lot 7, Block 1, except the south 15 feet of said west line and one location for each lot over and across the west line of Lot 8, Block 1, except over and across the north 15 feet of said west line and the south 40 feet of said west line, such locations to be established by the City Engineer of Wichita, Kansas, and provided, further, that Lots 7 and 8, Block 1 shall have one joint access to Seneca St. over and across the south 15 feet of the west line of said Lot 7, Block 1 and over and across the north 15 feet of the west line of said Lot 8, Block 1.

May Morris Rittenoure
May Morris Rittenoure
State of Kansas, County of Sedgwick, SS.
The foregoing instrument was acknowledged before me this 12th day of February, 1977, by May Morris Rittenoure and Lawrence W. Rittenoure, wife and husband.
My Commission expires: December 31, 1980
William A. Bell Notary Public
William A. Bell



This plat of "SOUTH SENECA GARDENS FOURTH ADDITION", Wichita, Sedgwick County, Kansas has been submitted to and approved by the Wichita-Sedgwick County Metropolitan Area Planning Commission, Wichita, Kansas.

Dated this 7th day of December, 1977.
Wichita-Sedgwick County Metropolitan Area Planning Commission
By Jerry Greider Chairman
Robert A. Lakin Secretary

This plat approved and all dedications shown hereon accepted by the Board of City Commissioners of the City of Wichita, Kansas, this 11th day of February, 1977.
Pat Kettler Mayor

Donald C. Gaisick City Clerk

This plat approved and all dedications shown hereon accepted by the Board of County Commissioners of Sedgwick County, Kansas, this 11th day of February, 1977.
Don McCreary Chairman

Don McCreary Commissioner

ATTEST:
Dorothy K. White County Clerk

Entered on transfer record this day of February, 1977.
Dorothy K. White County Clerk

State of Kansas, County of Sedgwick, SS.
This is to certify that this instrument was filed for record in the Register of Deeds Office at 10:00 o'clock P.M. on the 11th day of February, 1977.
Sette P. McCart Register of Deeds
Pat Kettler Deputy

441366

SANITARY SEWER EXTENSIONS
To Blocks 8, 9, 10, and 11,
South Seneca Gardens 4th Addition
Wichita, Kansas

City of Wichita Private Project No.
468-76-245-90000-000-000-008
MOHRING & ASSOCIATES
CONSULTING ENGINEERS
WICHITA

Sheet 6 of 6

H-2 5-21
10 3 3 8

FILMED FROM THE BEST COPY AVAILABLE