

**SANITARY SEWER TO SERVE  
LOTS 4 & 5, BLK. 7  
SOUTHWEST IND. ADDITION**

Private Project Number:

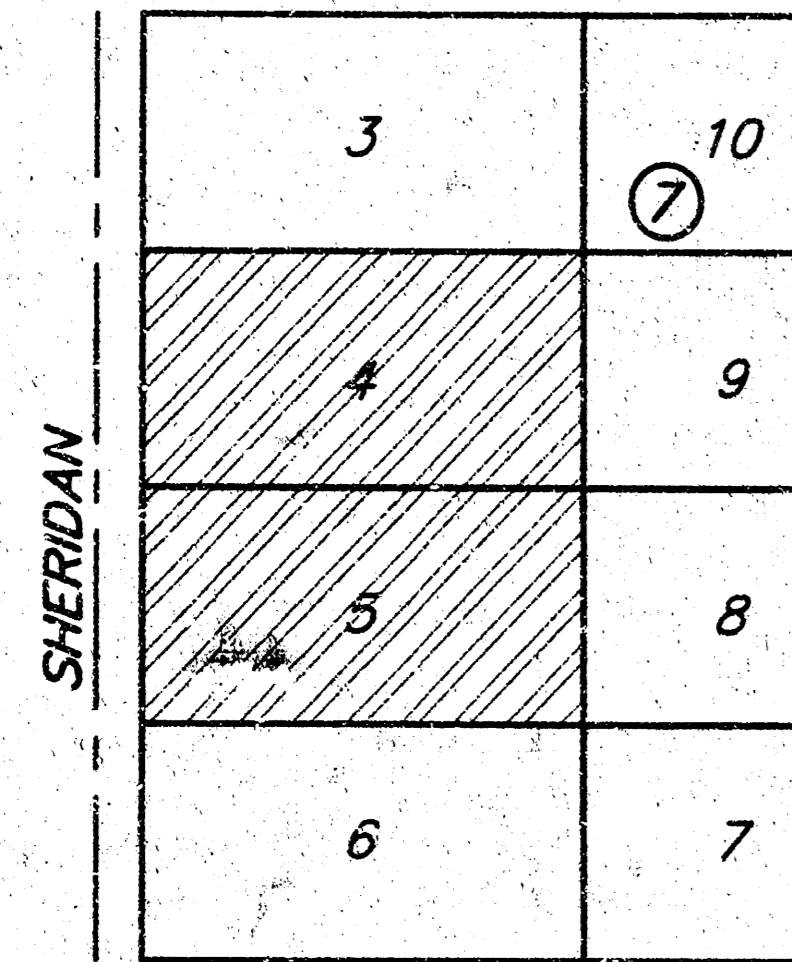
**687PPS (607861)**

**CITY OF WICHITA, KANSAS**

**Michael E. Lindebak, P.E. City Engineer**

**February, 1997**

**BENEFIT DISTRICT**  
SOUTHWEST IND. ADD.



PAWNEE

**General Notes**

1. Contractor will be required to provide notice to utility companies a minimum of twenty-four (24) hours prior to any excavation, as follows:

Kansas One-Call 687-2470

The Contractor must notify the following in case of an emergency:

- Cablevision 262-4270
- or 263-2061
- K.G.E. Gas Service Company 383-8650
- Kansas Gas & Electric Company 383-8600
- Peoples Natural Gas Company 942-7600
- Southwestern Bell Telephone Company 1-571-2611
- City of Wichita Water Department 268-4908
- City of Wichita Sewer Maintenance 268-4071

2. Underground utility service lines and overhead utility pole lines are to be adjusted as necessary by others prior to construction, unless the plans specifically call for their adjustment by the Contractor. Existing utilities and their locations, as shown on the plans, represent the best information obtainable for design. Location information has been obtained from the various utility companies and is either from company record drawings or company-provided field locations. The Contractor will be required to work around existing utilities within the right-of-way which do not conflict with proposed construction.

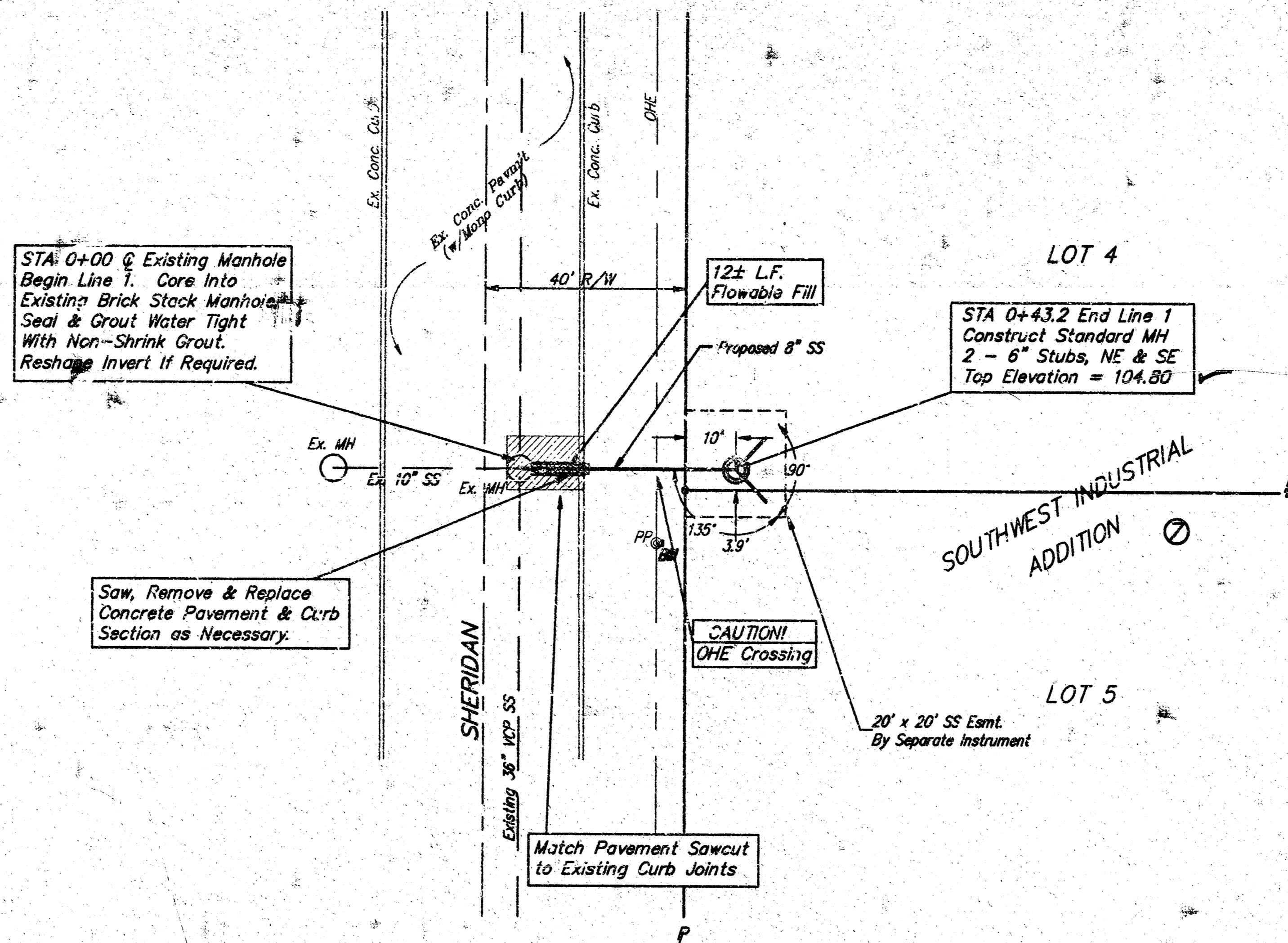
3. The Contractor shall be responsible for maintaining continuous flow of sewage through construction. Contractor's proposed method for maintaining sewage flow shall be approved by the Engineer. Cost of maintaining flow of sewage through construction will not be paid for directly and this cost shall be considered as subsidiary to the other pay items of work.

4. The Contractor shall be responsible for preserving property irons. The Contractor will be required to re-establish any property irons which are damaged or destroyed by his construction operations. Such irons shall be re-established by a licensed land surveyor in accordance with state laws.

5. All areas disturbed by construction operations shall be restored to pre-construction conditions including seeding, grading, and mulching if so required.

6. The Contractor shall erect and maintain traffic control devices in accordance with the Manual on Uniform Traffic Control Devices. Subject to Engineer's approval.

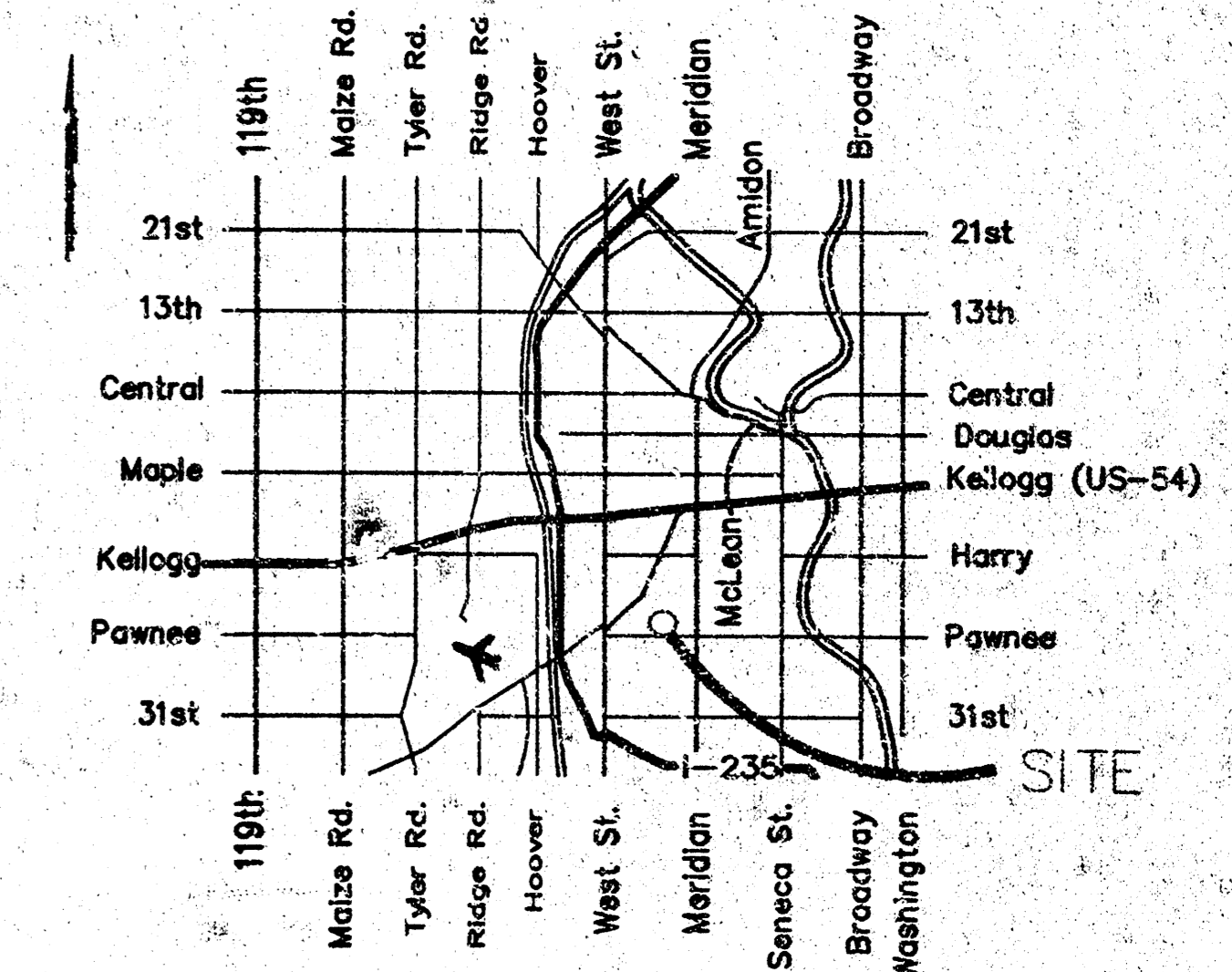
7. The Contractor shall comply with all applicable safety codes particularly with regard to Confined Spaces and conditions thereof.



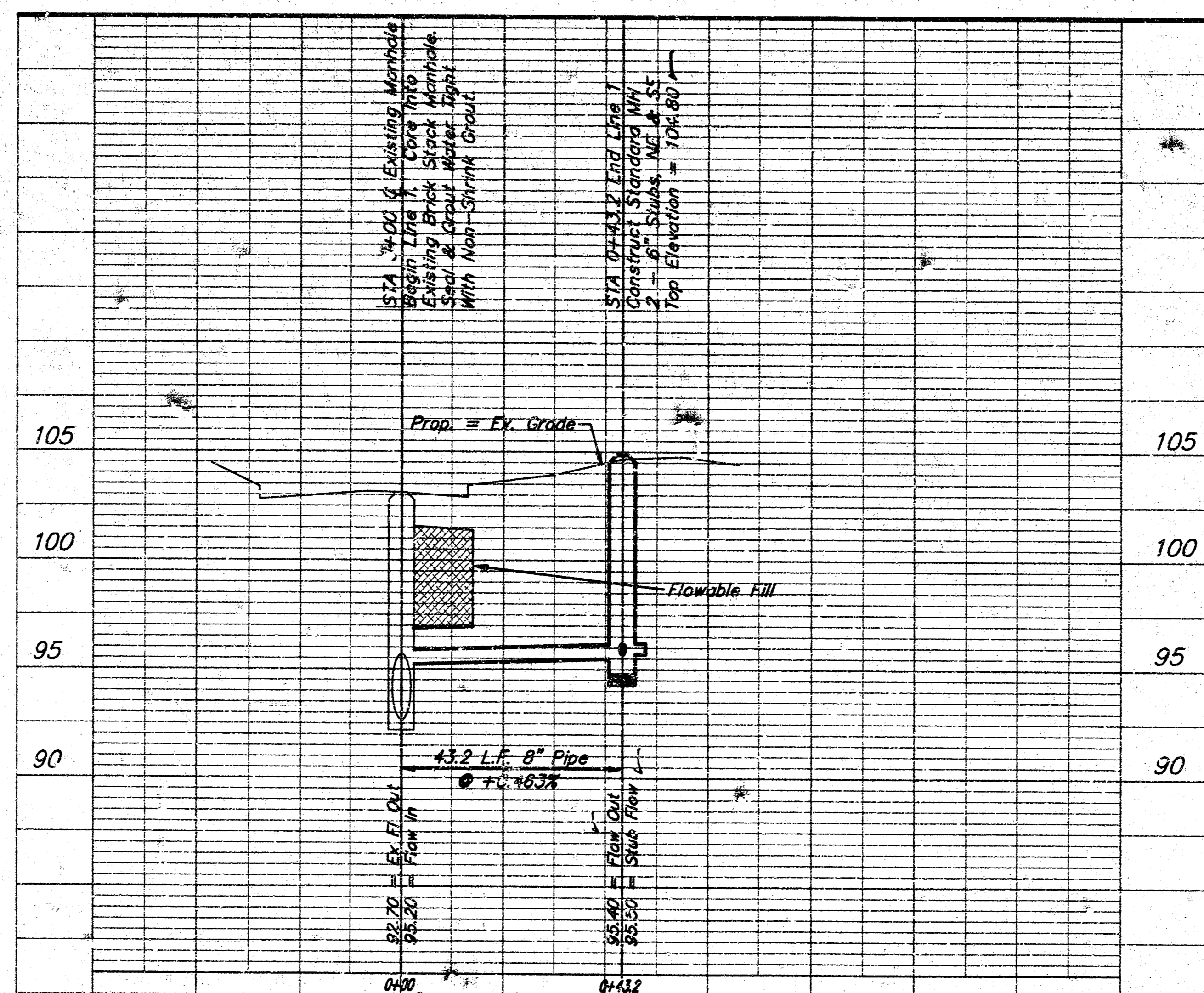
SCALE:  
1" = 20' Horizontal  
1" = 5' Vertical  
• = IRON

**BENCHMARK**

60d Step Nail East Side Power Pole  
5' West & 10' South of NW Corner  
Lot 5, Blk. 7.  
Elevation = 104.22 City Datum



**LOCATION MAP**

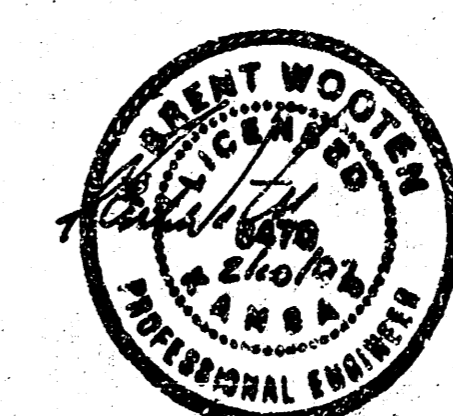


Booked  
ROL  
2/10/97

ASBUILT PER  
PLAN  
3/17/97

**APPROVED AS NOTED**  
**BY CITY ENGINEER OF WICHITA**  
*Sanitary Sewer* *RLH* 2/10/97

**NOTE TO CONTRACTORS**  
Inspection and testing for this project is to be provided by a Licensed Consulting Engineering Firm under contract with the Owner/Developer. Said inspection to be in accordance with the City of Wichita standard construction engineering practices and certified by a Licensed Professional Engineer. No work shall be performed in dedicated easements or public right-of-way by the Contractor without such inspection nor shall any work be commenced without written authorization by the City Engineer. All Construction and Materials shall comply with the City of Wichita Specifications and Standards (on file and available in the City Engineer's Office).



INSPECTOR: LYNN WOELKE, BAUGHMAN CO.  
ASBUILT: 3/17/97 JFB BAUGHMAN CO.  
**BAUGHMAN COMPANY P. A.**  
ENGINEERING, SURVEYING, & PLANNING  
315 ELUS WICHITA, KANSAS 67211

14-2-4-13